



**Stour Road, Astley**

Manchester



HILLS

In Excess of **£270,000**

# 150 Stour Road

Astley, Manchester

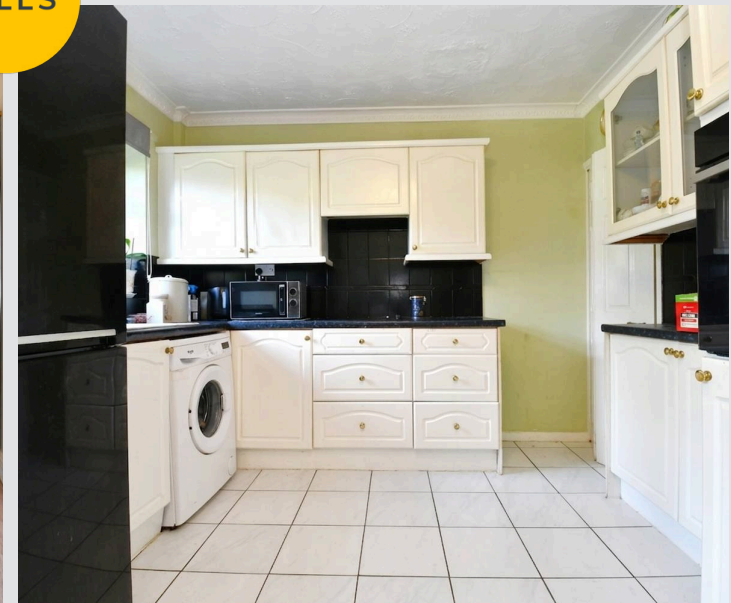
**\*HUGE GARDEN\*** Take a Look at this Fantastic Four Bedroom Semi-Detached Property Located in a Popular Residential Estate in Astley, with Potential to Extend Subject to Planning Permission (STPP)  
Council Tax band: B

Tenure: Leasehold

- Fantastic Four Bedroom Semi-Detached Property with a Loft Conversion Adding the Fourth Bedroom
- Spacious Family Lounge and a Dining Room
- Fitted Kitchen and a Modern, Four-Piece Family Bathroom
- Four Well-Proportioned Bedrooms, with an Ensuite to the Main Bedroom
- Huge Garden with Laid-to-Lawn Grass, Paving and Mature Plants
- Driveway to the Side for Off-Road Parking
- Just a Short Walk from a Shop, a Pub, Takeaways and a Deli
- Within Easy Access of the Guided Busway and the A580, Providing Direct Access into Manchester City Centre
- Close to Greenery and Astley Street Park
- Within Easy Access of Tyldesley Town Centre, which Provides a Fine Array of Bars, Shops, Restaurants and Cafes



HILLS



## Hallway

## Lounge

15' 8" x 9' 11" (4.78m x 3.01m)

## Dining Room

9' 11" x 0' 2" (3.01m x 0.06m)

## Kitchen

9' 11" x 8' 2" (3.01m x 2.48m)

## Bedroom Two

12' 1" x 8' 0" (3.69m x 2.44m)

## Bedroom Three

7' 3" x 6' 10" (2.20m x 2.08m)

## Bedroom Four

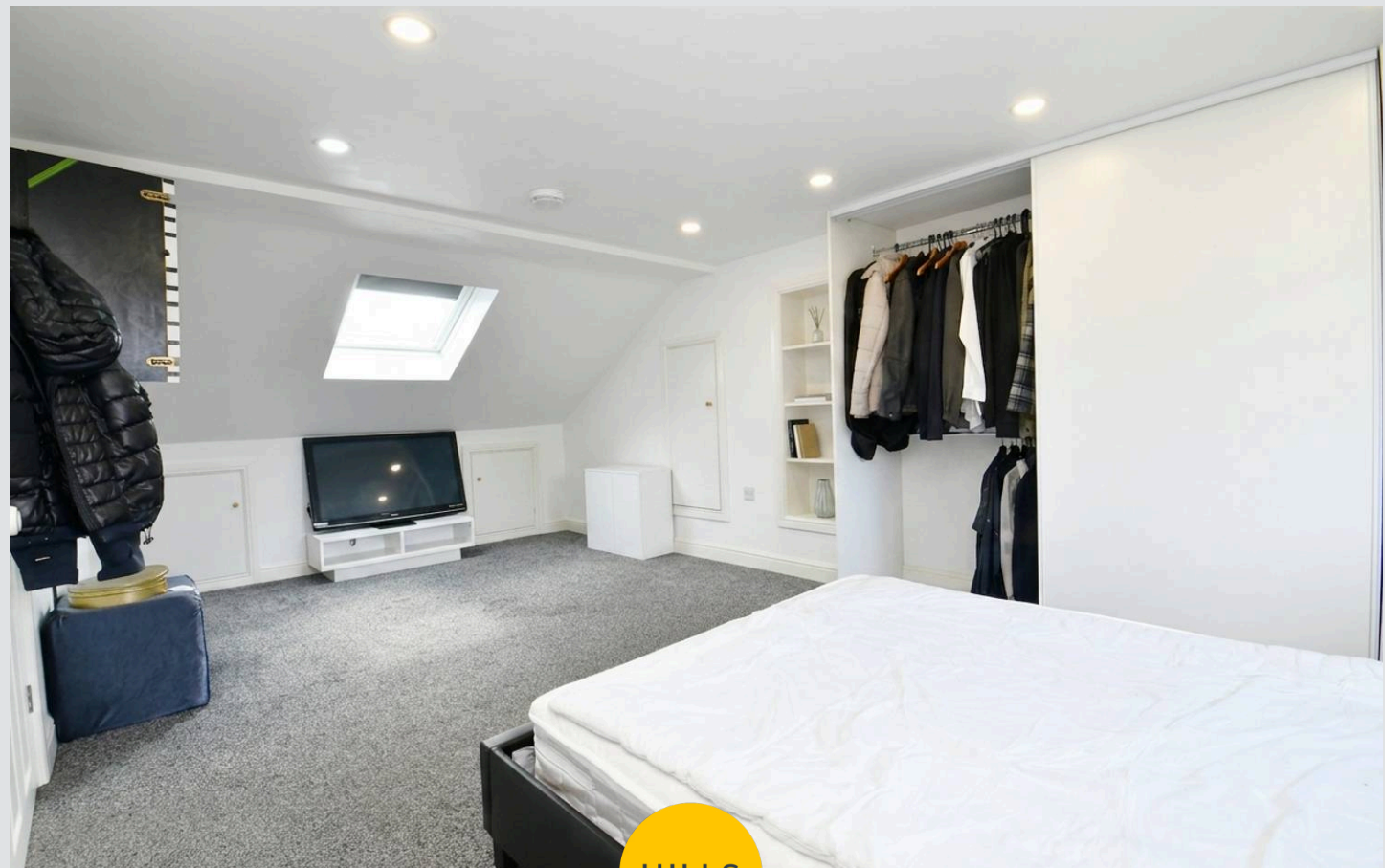
11' 9" x 8' 0" (3.58m x 2.43m)

## Bedroom One

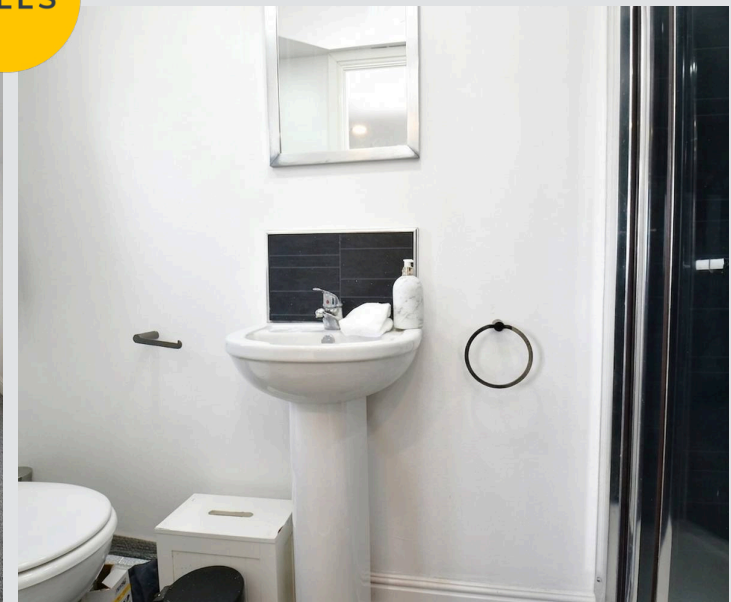
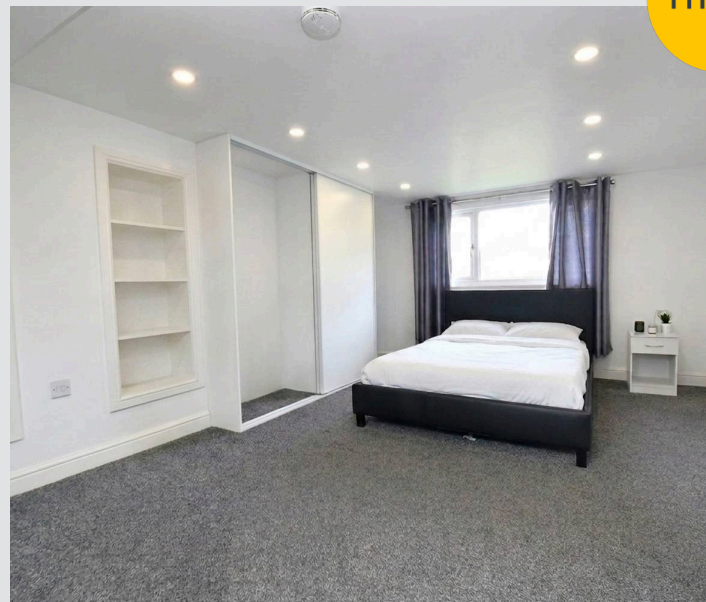
19' 0" x 11' 4" (5.79m x 3.45m)

## En-suite

8' 4" x 2' 7" (2.55m x 0.80m)



HILLS



**Hallway**

**Lounge**

15' 8" x 9' 11" (4.78m x 3.01m)

**Dining Room**

9' 11" x 0' 2" (3.01m x 0.06m)

**Kitchen**

9' 11" x 8' 2" (3.01m x 2.48m)

**Bedroom Two**

12' 1" x 8' 0" (3.69m x 2.44m)

**Bedroom Three**

7' 3" x 6' 10" (2.20m x 2.08m)

**Bedroom Four**

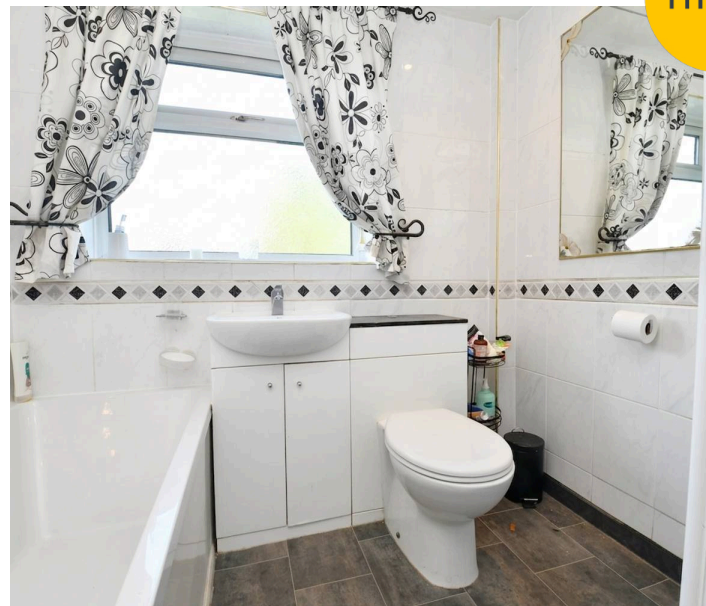
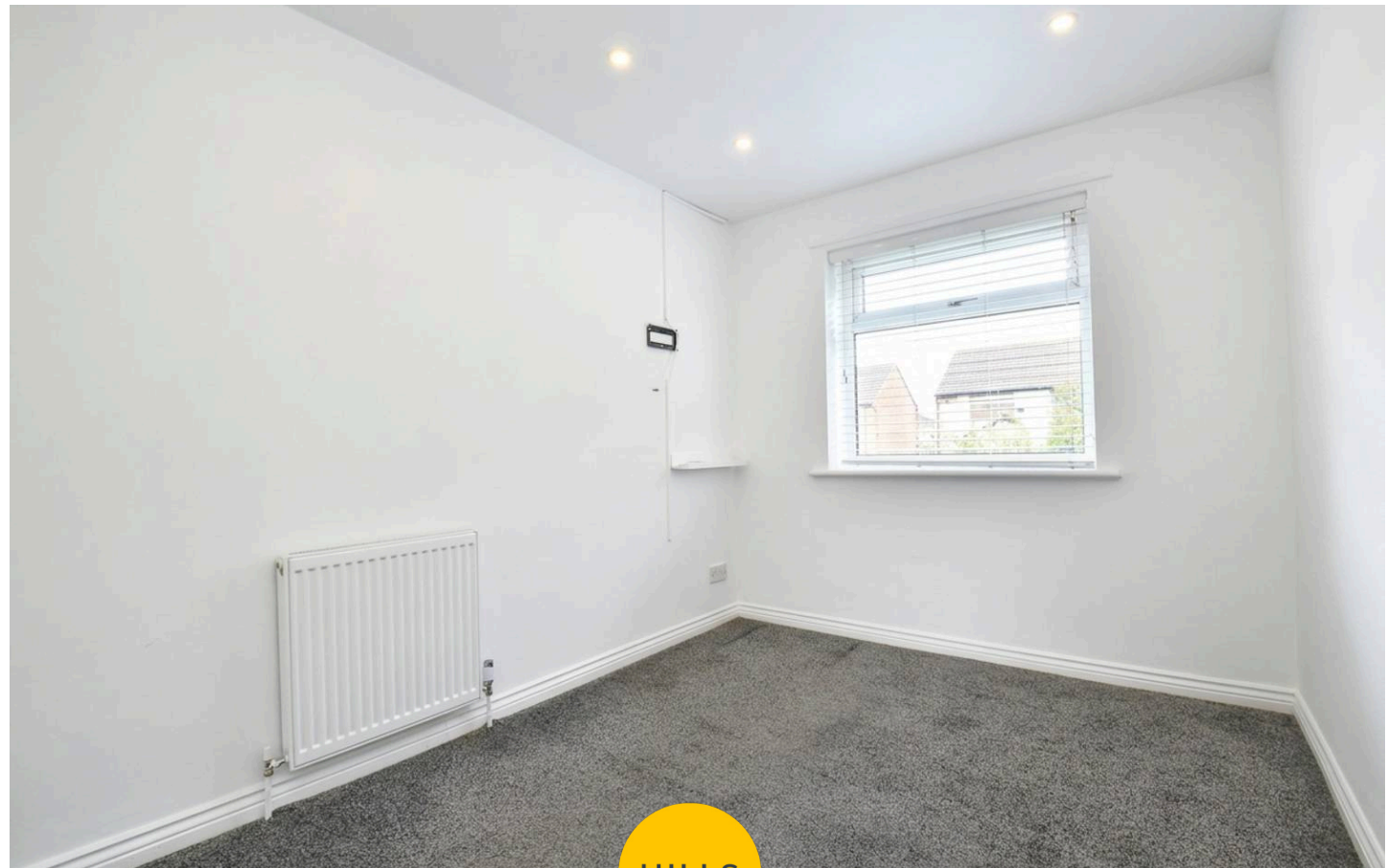
11' 9" x 8' 0" (3.58m x 2.43m)

**Bedroom One**

19' 0" x 11' 4" (5.79m x 3.45m)

**En-suite**

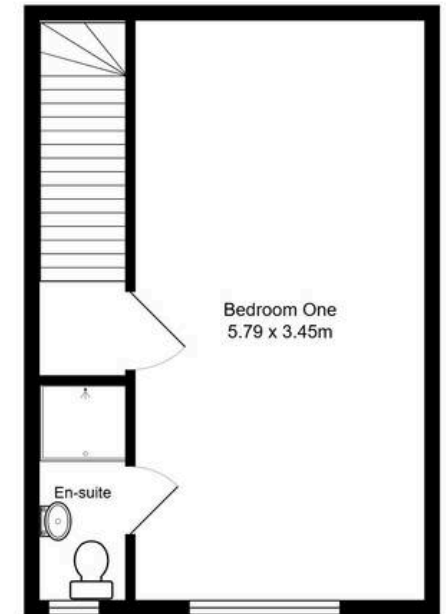
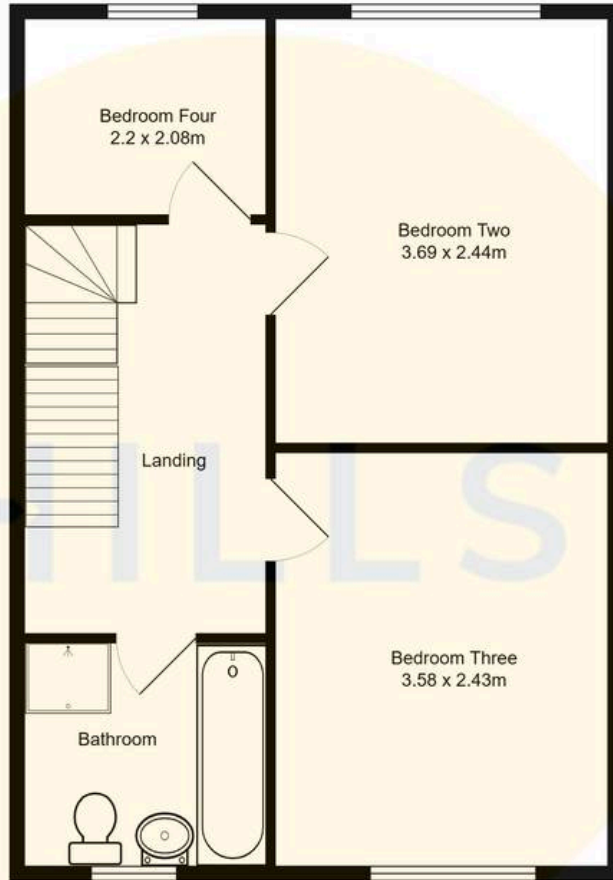
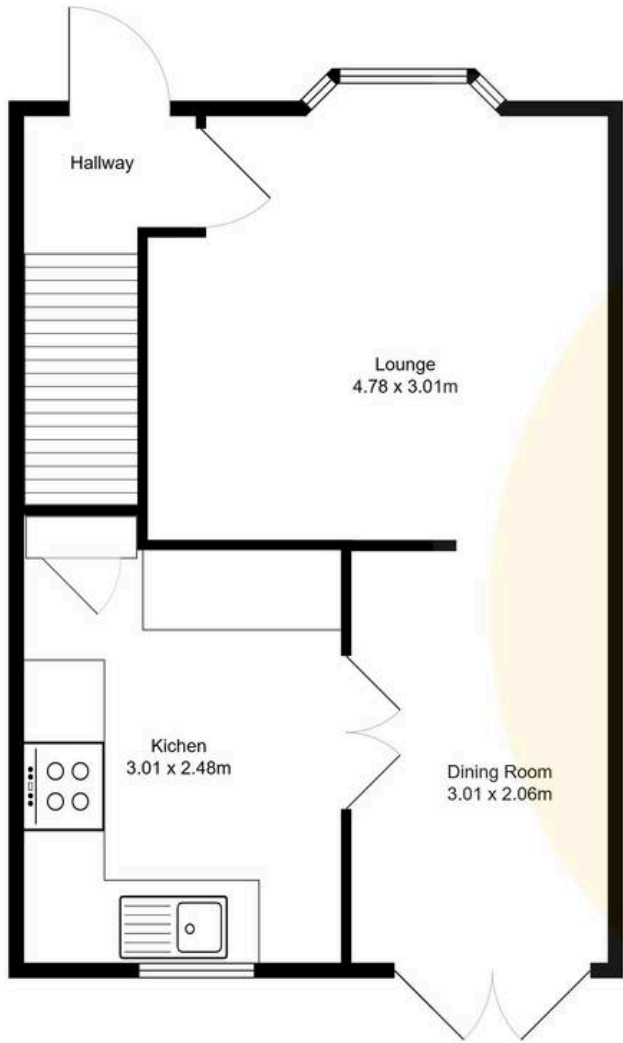
8' 4" x 2' 7" (2.55m x 0.80m)





HILLS







## Hills | Salfords Estate Agent

Hills Residential, Sentinel House Albert Street – M30 0SS

0161 707 4900

[sales@hills.agency](mailto:sales@hills.agency)

[www.hills.agency/](http://www.hills.agency/)



By law, we are required to conduct anti-money laundering checks on all potential buyers and sellers. In line with HMRC guidelines, our trusted partner, Coadjute, will securely manage these checks on our behalf. A non-refundable fee of £45 + VAT per person will apply, and Coadjute will handle the payment. Once an offer is accepted, Coadjute will send a secure link for you to complete the biometric checks. These checks must be completed before we can send the memorandum of sale to all parties. PLEASE NOTE: The Agent has not tested any equipment, fixtures, fittings or services so cannot verify that they are in working order or fit for the purpose. References to the properties tenure are based on information supplied by the seller. You are advised to check the availability of this property before travelling any distance to view. Every effort has been made to ensure these particulars are correct and not misleading but their accuracy is not guaranteed nor do they form part of any contract.