

Odessa Avenue

Salford



£290,000

Odessa Avenue

Salford

This stylish, three bedroom, semi-detached family home is ideally located in the popular 'O-Zone' area and benefits from a driveway and a modern kitchen and bathroom!

Council Tax band: C

Tenure: Leasehold

- Stylish Three Bedroom, Semi-Detached Family Home
- Located in the Popular 'O-Zone', Within Walking Distance of Salford Royal Hospital
- Within Catchment of Ellesmere Park High School and Close to Several Well-Kept Parks
- Bay-Fronted Lounge and spacious dining room
- Modern fitted kitchen and a Three-piece family bathroom suite
- Ideal for Professionals and Families Alike!
- Three generous sized bedrooms
- Complete with a driveway, and low maintenance front and rear gardens
- Viewing is Highly Recommended!



Entrance Hallway

Lounge

12' 1" x 11' 11" (3.68m x 3.64m)

Dining Room

12' 7" x 11' 11" (3.83m x 3.62m)

Kitchen

14' 10" x 6' 8" (4.52m x 2.03m)

Landing

Bedroom One

14' 7" x 10' 0" (4.44m x 3.04m)

Bedroom Two

12' 7" x 11' 10" (3.84m x 3.60m)

Bedroom Three

8' 6" x 6' 11" (2.60m x 2.12m)

Bathroom

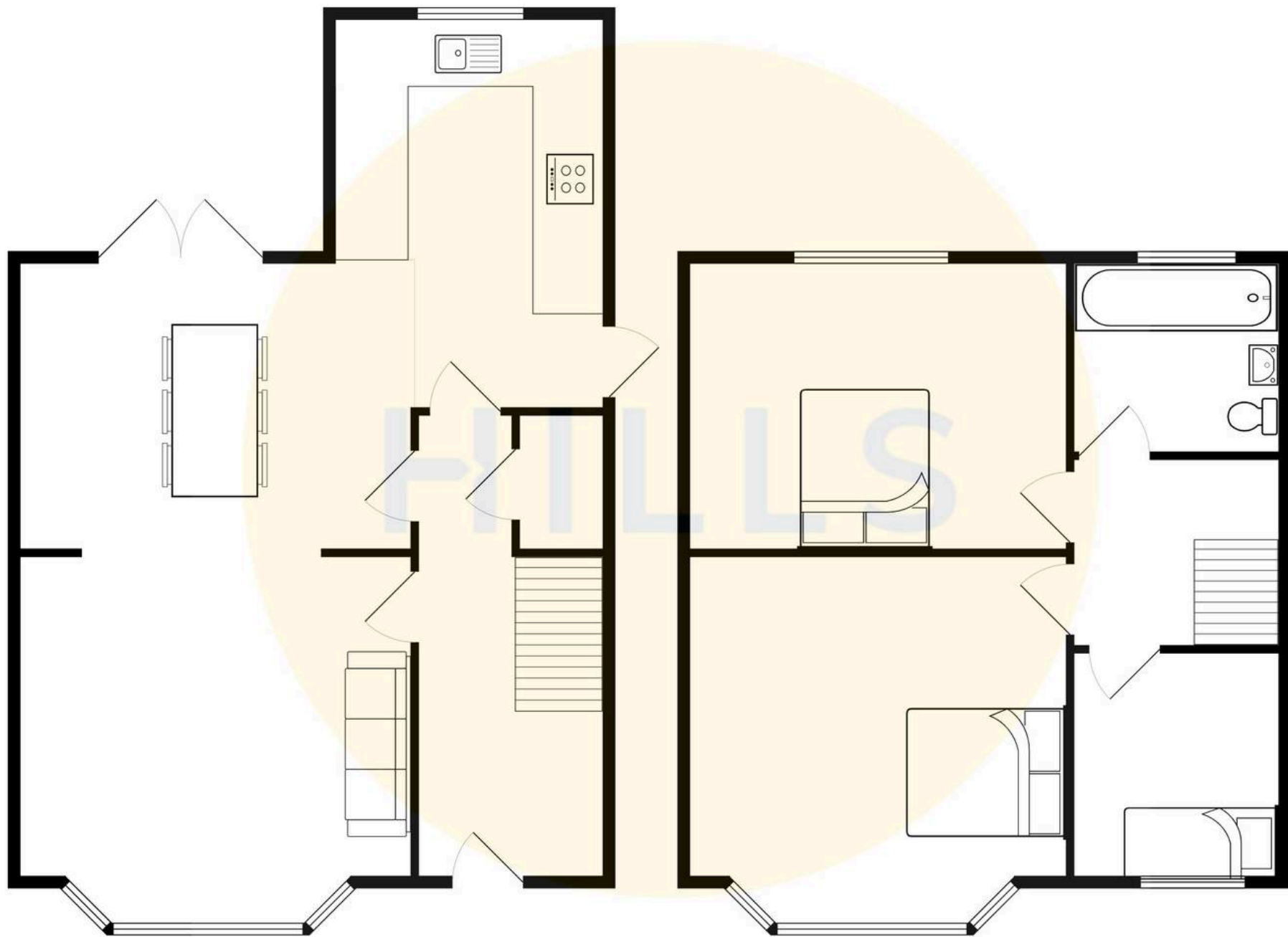
7' 8" x 5' 11" (2.33m x 1.80m)





HILLS







Hills | Salfords Estate Agent

Hills Residential, Sentinel House Albert Street – M30 0SS

0161 707 4900

sales@hills.agency

www.hills.agency/



By law, we are required to conduct anti-money laundering checks on all potential buyers and sellers. In line with HMRC guidelines, our trusted partner, Coadjute, will securely manage these checks on our behalf. A non-refundable fee of £45 + VAT per person will apply, and Coadjute will handle the payment. Once an offer is accepted, Coadjute will send a secure link for you to complete the biometric checks. These checks must be completed before we can send the memorandum of sale to all parties. PLEASE NOTE: The Agent has not tested any equipment, fixtures, fittings or services so cannot verify that they are in working order or fit for the purpose. References to the properties tenure are based on information supplied by the seller. You are advised to check the availability of this property before travelling any distance to view. Every effort has been made to ensure these particulars are correct and not misleading but their accuracy is not guaranteed nor do they form part of any contract.