



Dovedale Avenue, Eccles

Manchester



In Excess of £310,000

# Dovedale Avenue

Eccles, Manchester

Stunning three-bedroom semi-detached property nestled in a peaceful cul-de-sac in the desirable Ellesmere Park area! Positioned just moments from the lively Monton Village!  
Council Tax band: C

Tenure: Freehold

- Stunning three bedroom semi-detached property situated in a quiet cul-de-sac in the desirable Ellesmere Park area and within walking distance of the vibrant Monton Village
- Spacious bay fronted lounge
- Modern fitted kitchen diner
- Three generous sized bedrooms
- Contemporary three-piece bathroom suite
- Situated in a quiet location, close to excellent transport links, amenities and good local schooling
- Positioned a short stroll to Monton High Street with a great selection of bars, restaurants and amenities
- Generous front garden and private, sun-drenched rear garden
- Perfect first time buy or family home!
- Viewing is highly recommended!



HILLS



**Entrance Hallway**

**Lounge**

13' 11" x 13' 10" (4.25m x 4.21m)

**Kitchen / Diner**

20' 3" x 10' 4" (6.18m x 3.16m)

**Landing**

**Bedroom One**

13' 9" x 11' 1" (4.20m x 3.39m)

**Bedroom Two**

10' 7" x 10' 2" (3.23m x 3.10m)

**Bedroom Three**

9' 6" x 7' 2" (2.89m x 2.18m)

**Bathroom**

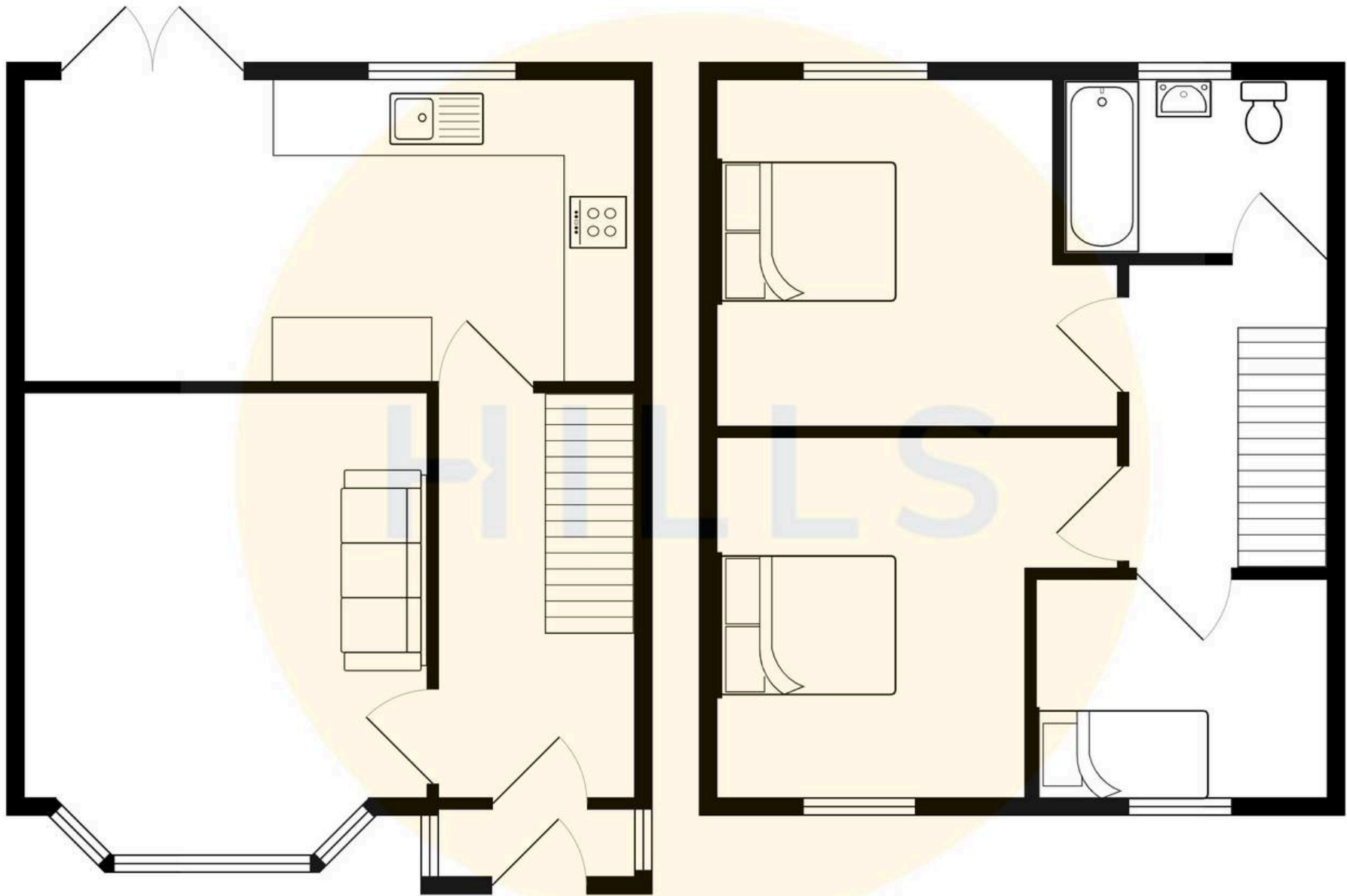
7' 7" x 5' 5" (2.30m x 1.66m)





HILLS







## Hills | Salfords Estate Agent

Hills Residential, Sentinel House Albert Street – M30 0SS

0161 707 4900

[sales@hills.agency](mailto:sales@hills.agency)

[www.hills.agency/](http://www.hills.agency/)



By law, we are required to conduct anti-money laundering checks on all potential buyers and sellers. In line with HMRC guidelines, our trusted partner, Coadjute, will securely manage these checks on our behalf. A non-refundable fee of £45 + VAT per person will apply, and Coadjute will handle the payment. Once an offer is accepted, Coadjute will send a secure link for you to complete the biometric checks. These checks must be completed before we can send the memorandum of sale to all parties. PLEASE NOTE: The Agent has not tested any equipment, fixtures, fittings or services so cannot verify that they are in working order or fit for the purpose. References to the properties tenure are based on information supplied by the seller. You are advised to check the availability of this property before travelling any distance to view. Every effort has been made to ensure these particulars are correct and not misleading but their accuracy is not guaranteed nor do they form part of any contract.