



Tiverton Avenue, Leigh

Leigh



£290,000

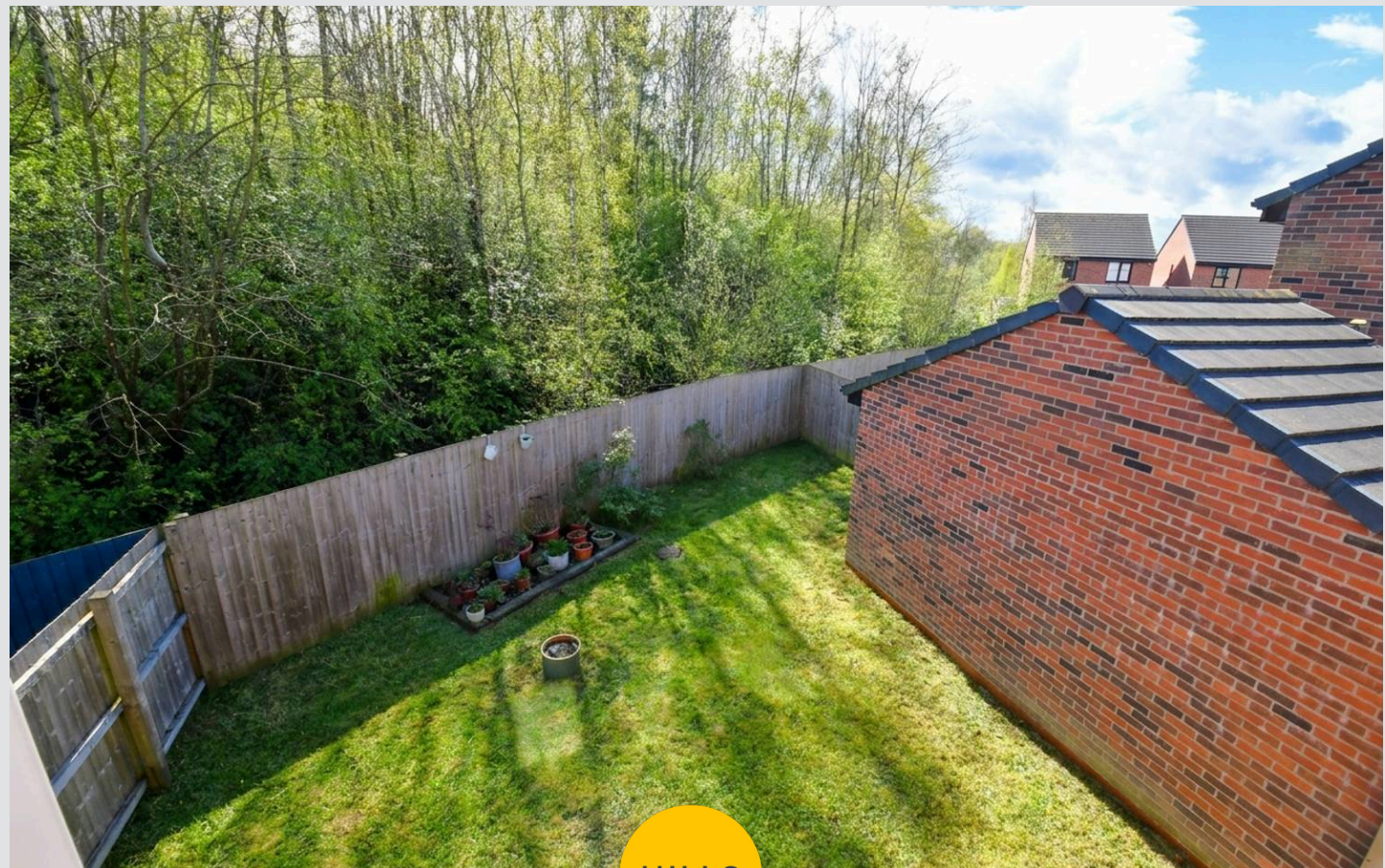
# 61 Tiverton Avenue

Leigh, Leigh

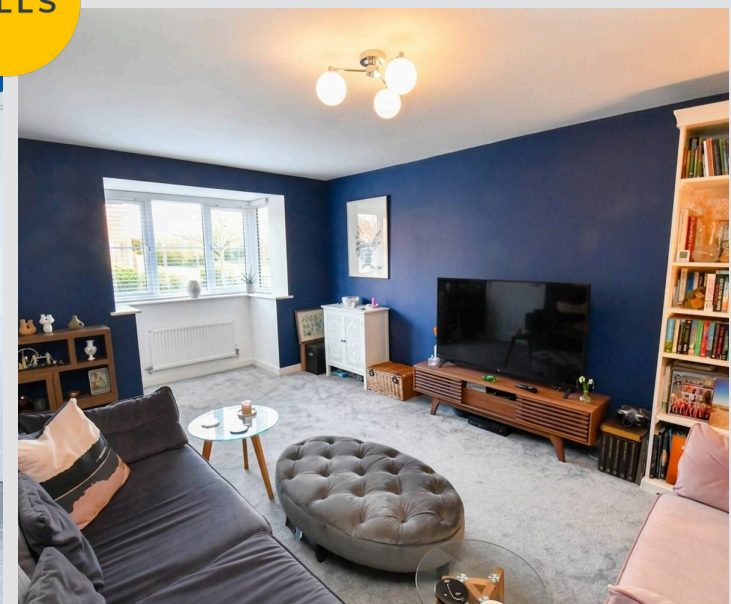
Beautifully Presented Detached Property Located on a Quiet, Modern Development. With a Peaceful Outlook Over Trees to the Rear and Benefitting from a Driveway and a Detached Garage to the Side Council Tax band: D

Tenure: Freehold

- Beautifully Presented Three Bedroom Detached Property
- Located on a Quiet, Modern Development
- With a Peaceful Outlook to the Rear Over Trees and Greenery
- Generously-Sized, Bay-Fronted Family Lounge
- Modern Kitchen Diner Complete with Plenty of Storage, and Patio Doors to the Rear Letting Natural Light In
- Three Generously-Sized Bedrooms, with an Ensuite to the Main Bedroom
- Modern, Three-Piece Family Bathroom and a Downstairs W/C
- Benefits from a Driveway and a Detached Garage to the Side Providing Plenty of Off-Road Parking
- Just a 10 Minute Drive to Parsonage Retail Park, which Provides a Wide Range of Amenities
- Within Easy Access of Motorway Links into Manchester



HILLS



**Entrance Hallway**

**Downstairs W/C**

5' 6" x 3' 1" (1.68m x 0.93m)

**Lounge**

16' 0" x 10' 11" (4.88m x 3.34m)

**Kitchen Diner**

18' 2" x 10' 11" (5.53m x 3.33m)

**Landing**

**Bedroom One**

12' 0" x 9' 0" (3.67m x 2.75m)

**Ensuite**

9' 2" x 3' 3" (2.79m x 0.99m)

**Bedroom Two**

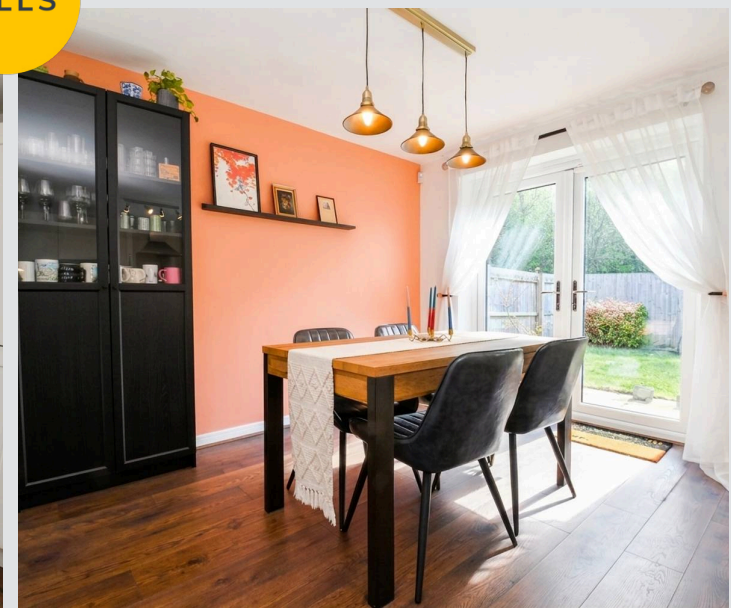
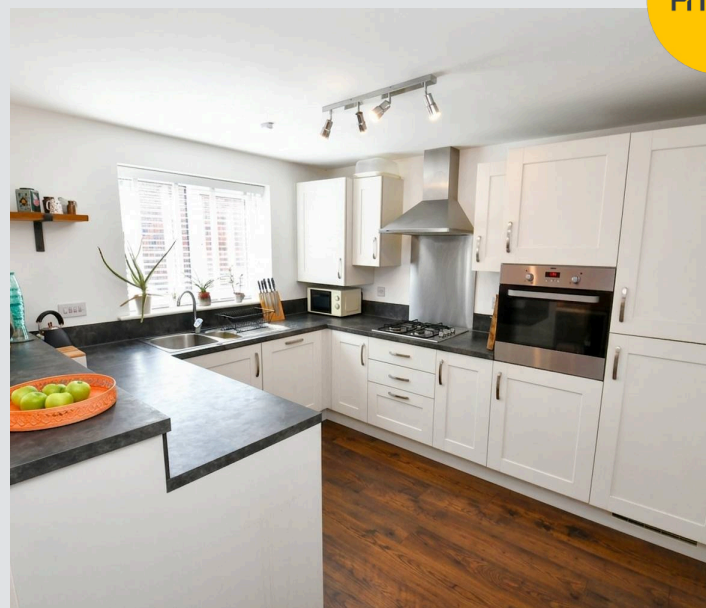
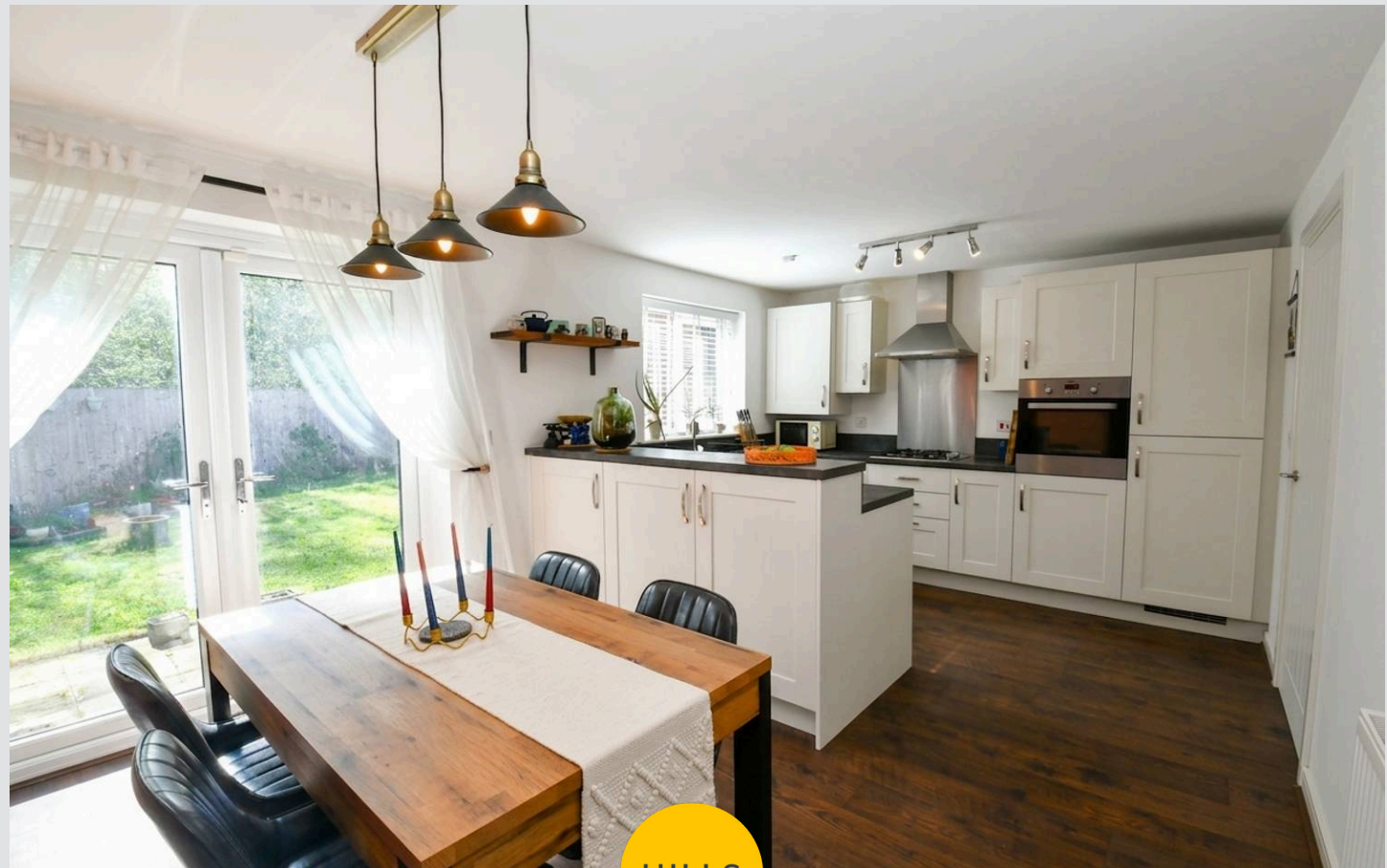
11' 7" x 9' 3" (3.53m x 2.81m)

**Bedroom Three**

11' 1" x 8' 9" (3.37m x 2.66m)

**Bathroom**

8' 9" x 6' 9" (2.67m x 2.05m)



**Entrance Hallway**

**Downstairs W/C**

5' 6" x 3' 1" (1.68m x 0.93m)

**Lounge**

16' 0" x 10' 11" (4.88m x 3.34m)

**Kitchen Diner**

18' 2" x 10' 11" (5.53m x 3.33m)

**Landing**

**Bedroom One**

12' 0" x 9' 0" (3.67m x 2.75m)

**Ensuite**

9' 2" x 3' 3" (2.79m x 0.99m)

**Bedroom Two**

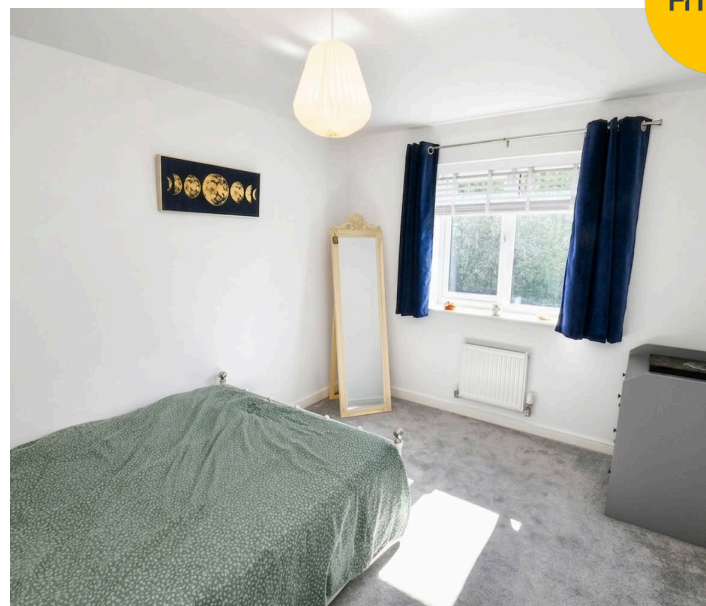
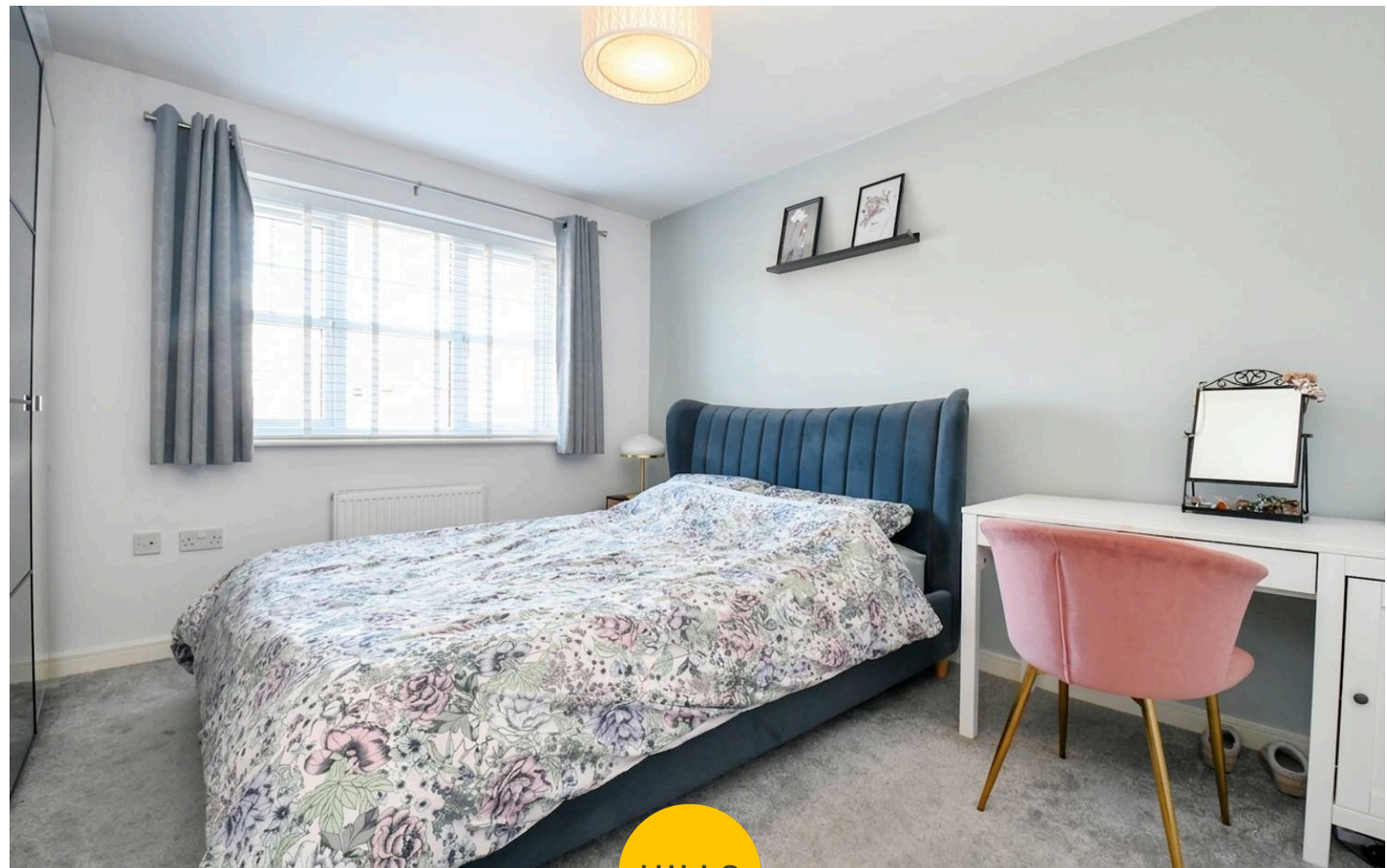
11' 7" x 9' 3" (3.53m x 2.81m)

**Bedroom Three**

11' 1" x 8' 9" (3.37m x 2.66m)

**Bathroom**

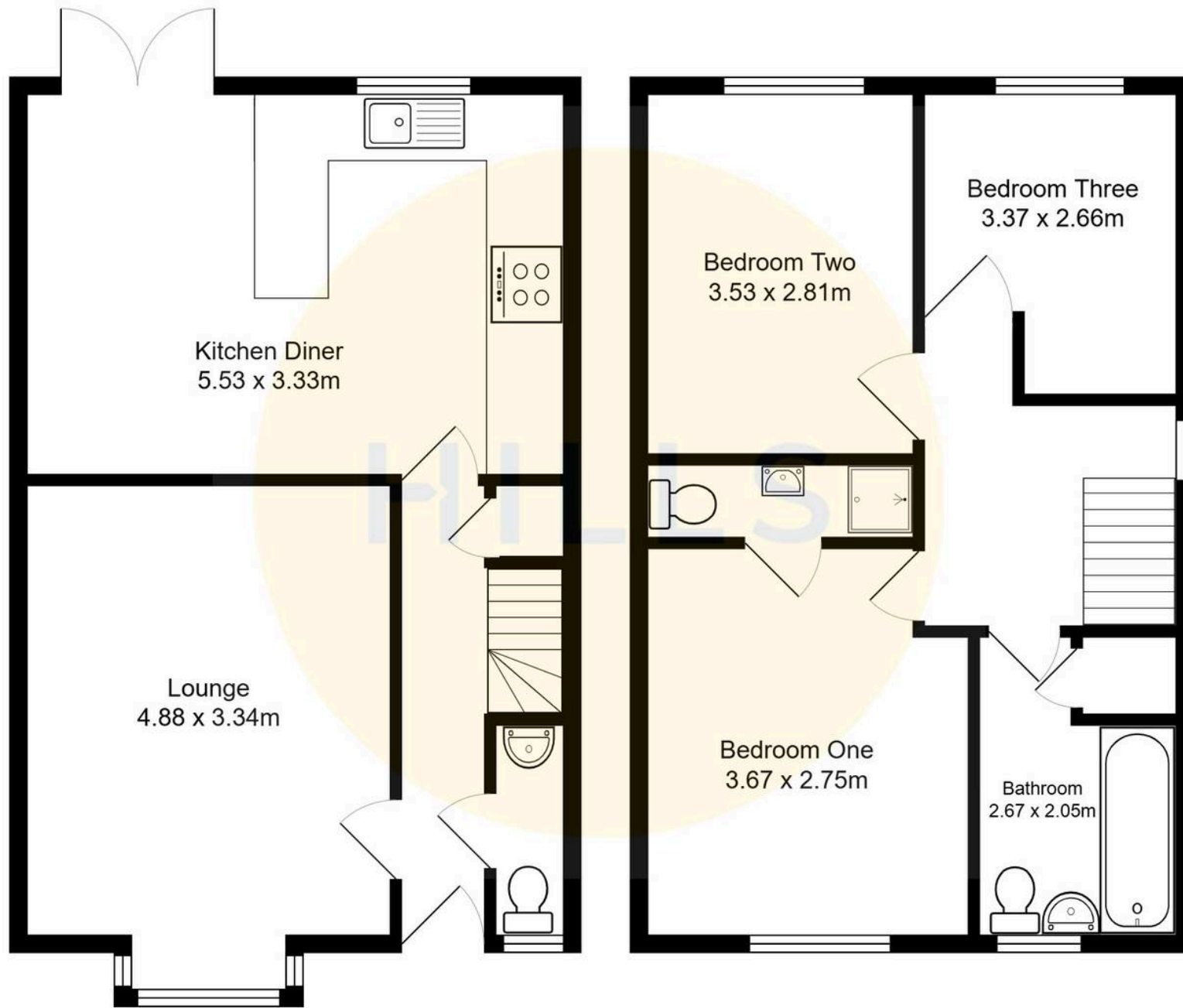
8' 9" x 6' 9" (2.67m x 2.05m)





HILLS







## Hills | Salfords Estate Agent

Hills Residential, Sentinel House Albert Street – M30 0SS

0161 707 4900

[sales@hills.agency](mailto:sales@hills.agency)

[www.hills.agency/](http://www.hills.agency/)



By law, we are required to conduct anti-money laundering checks on all potential buyers and sellers. In line with HMRC guidelines, our trusted partner, Coadjute, will securely manage these checks on our behalf. A non-refundable fee of £45 + VAT per person will apply, and Coadjute will handle the payment. Once an offer is accepted, Coadjute will send a secure link for you to complete the biometric checks. These checks must be completed before we can send the memorandum of sale to all parties. PLEASE NOTE: The Agent has not tested any equipment, fixtures, fittings or services so cannot verify that they are in working order or fit for the purpose. References to the properties tenure are based on information supplied by the seller. You are advised to check the availability of this property before travelling any distance to view. Every effort has been made to ensure these particulars are correct and not misleading but their accuracy is not guaranteed nor do they form part of any contract.