



Schofield Street, Leigh

Leigh



£260,000

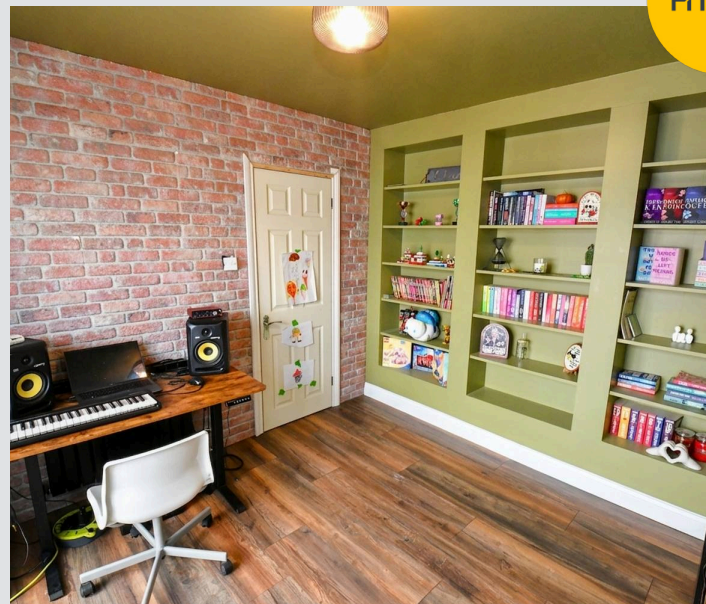
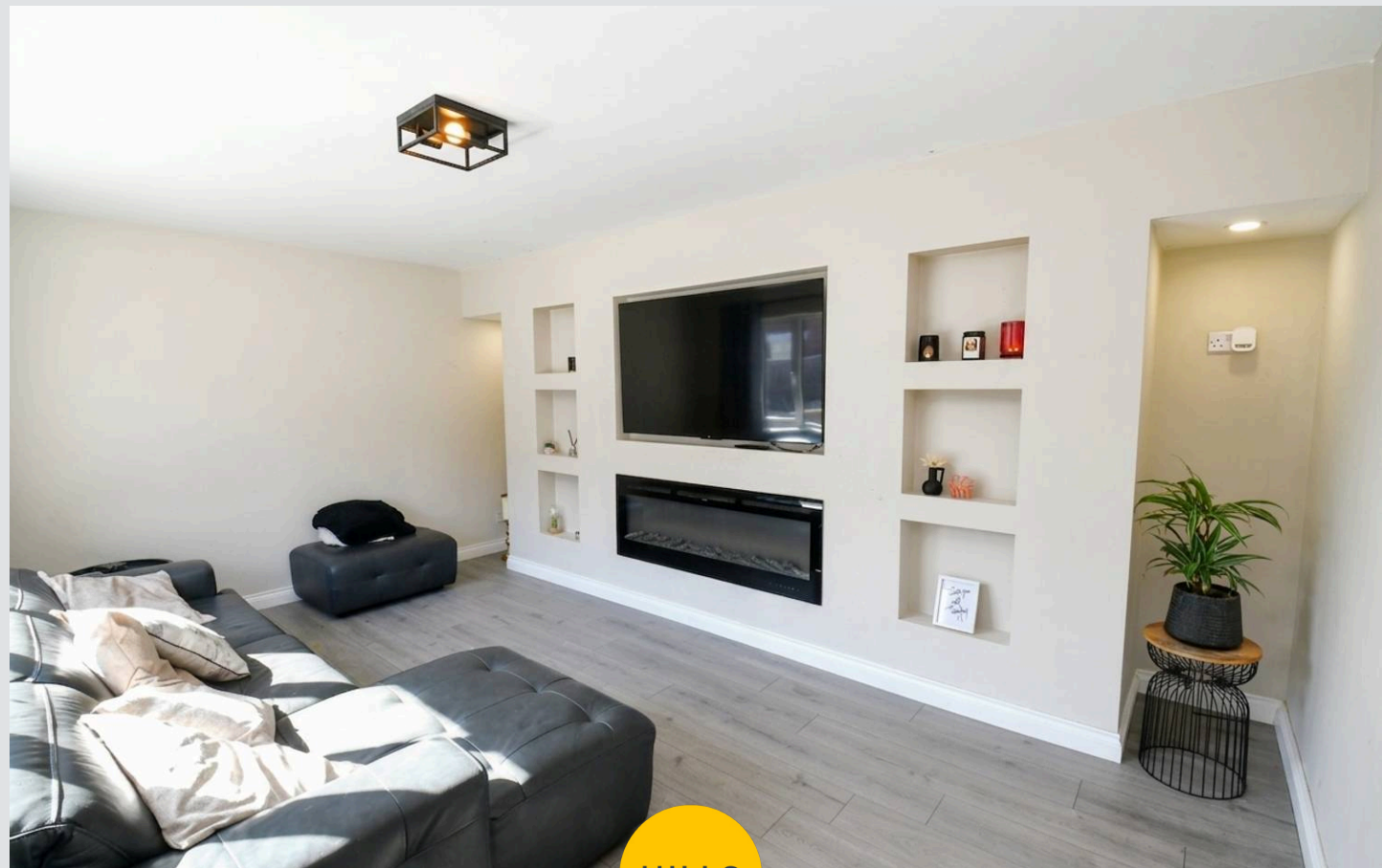
# 4 Schofield Street

Leigh, Leigh

HUGE Three Bedroom Detached Property Situated Close to Pennington, Within Walking Distance of Greenery and Leigh Sports Village. Boasting Three Reception Rooms and a Large Conservatory! Council Tax band: C

Tenure: Freehold

- Large Three Bedroom Detached Property
- Situated Close to Pennington, Close to Green Space and Leigh Sports Village
- Boasts Three Reception Rooms and a Huge Conservatory
- Ideal for Someone Looking to Put Their Own Stamp on a Property
- Spacious Kitchen, a Generously-Sized Utility Room and an Additional Room with the Potential to Reconfigure the Utility Area/Add a Downstairs Bathroom
- Three Double Bedrooms
- Modern, Three-Piece Shower Room
- Driveway to the Front for Several Cars
- Low-Maintenance Paved Garden to the Rear, Backing onto Greenery
- Within Easy Access of Amenities and Excellent Transport Links to Manchester and Warrington



**Entrance Hallway**

**Lounge**

16' 10" x 2' 10" (5.14m x 0.86m)

**Front Reception Room/Snug**

11' 0" x 8' 5" (3.36m x 2.56m)

**Kitchen**

12' 11" x 10' 10" (3.94m x 3.29m)

**Utility Room**

10' 2" x 8' 7" (3.10m x 2.62m)

**Additional Room**

8' 5" x 6' 6" (2.56m x 1.99m)

**Office/Reading Room**

10' 6" x 9' 10" (3.19m x 2.99m)

**Conservatory**

21' 1" x 12' 1" (6.43m x 3.69m)

**Landing**

**Shower Room**

7' 6" x 6' 6" (2.28m x 1.99m)

**Bedroom One**

13' 2" x 12' 2" (4.01m x 3.70m)

**Bedroom Two**

12' 9" x 10' 10" (3.88m x 3.30m)

**Bedroom Three**

12' 2" x 6' 2" (3.70m x 1.89m)



**Entrance Hallway**

**Lounge**

16' 10" x 2' 10" (5.14m x 0.86m)

**Front Reception Room/Snug**

11' 0" x 8' 5" (3.36m x 2.56m)

**Kitchen**

12' 11" x 10' 10" (3.94m x 3.29m)

**Utility Room**

10' 2" x 8' 7" (3.10m x 2.62m)

**Additional Room**

8' 5" x 6' 6" (2.56m x 1.99m)

**Office/Reading Room**

10' 6" x 9' 10" (3.19m x 2.99m)

**Conservatory**

21' 1" x 12' 1" (6.43m x 3.69m)

**Landing**

**Shower Room**

7' 6" x 6' 6" (2.28m x 1.99m)

**Bedroom One**

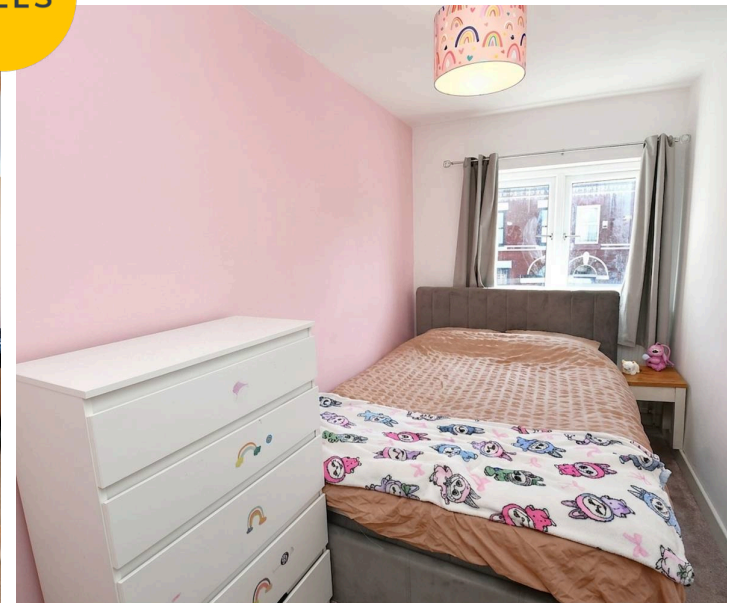
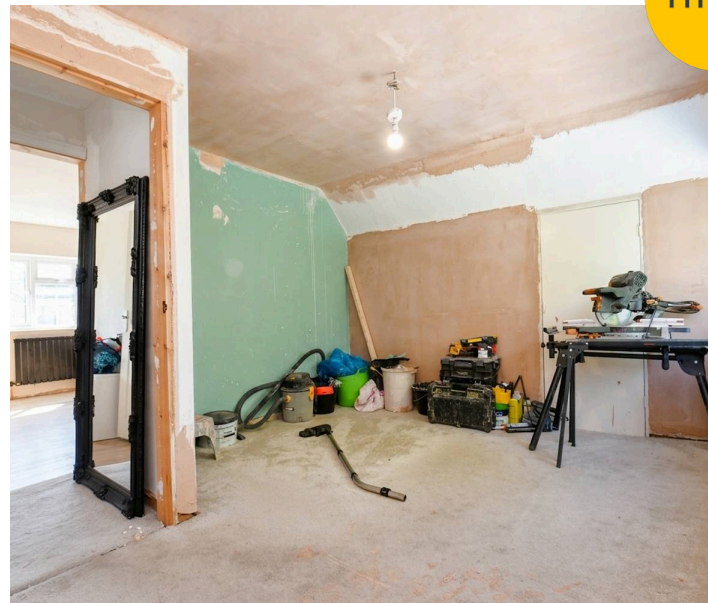
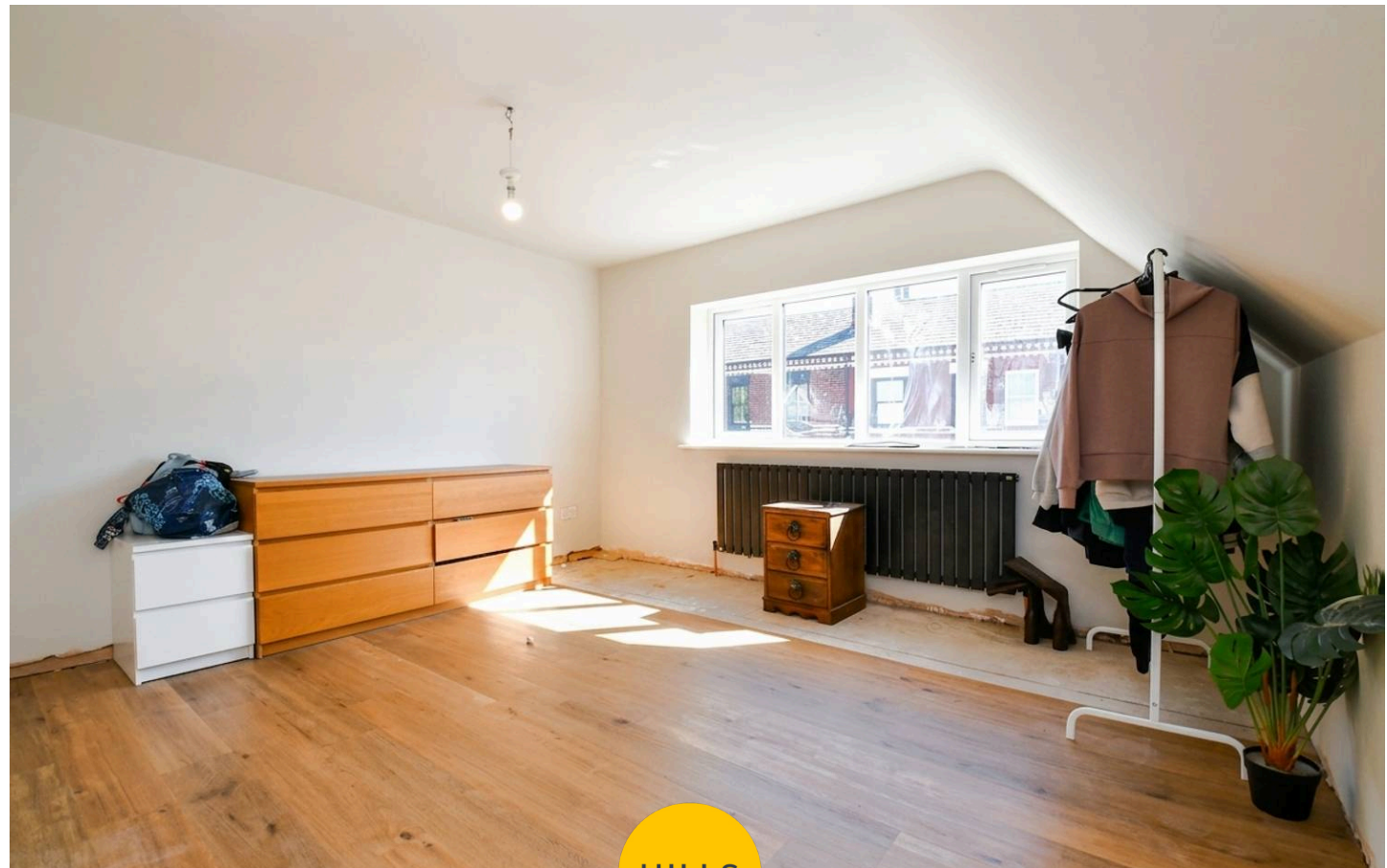
13' 2" x 12' 2" (4.01m x 3.70m)

**Bedroom Two**

12' 9" x 10' 10" (3.88m x 3.30m)

**Bedroom Three**

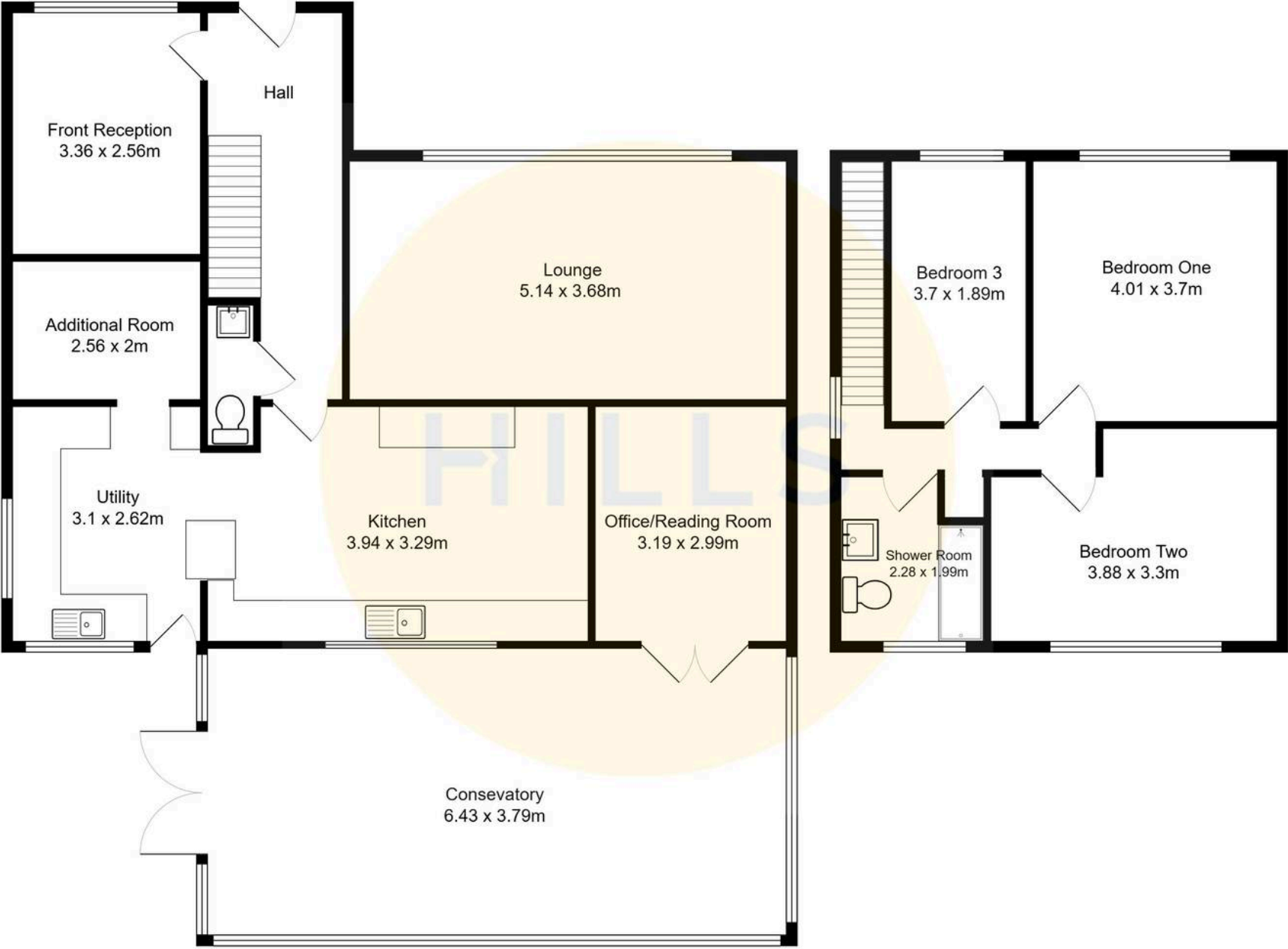
12' 2" x 6' 2" (3.70m x 1.89m)





HILLS







## Hills | Salfords Estate Agent

Hills Residential, Sentinel House Albert Street – M30 0SS

0161 707 4900

[sales@hills.agency](mailto:sales@hills.agency)

[www.hills.agency/](http://www.hills.agency/)



By law, we are required to conduct anti-money laundering checks on all potential buyers and sellers. In line with HMRC guidelines, our trusted partner, Coadjute, will securely manage these checks on our behalf. A non-refundable fee of £45 + VAT per person will apply, and Coadjute will handle the payment. Once an offer is accepted, Coadjute will send a secure link for you to complete the biometric checks. These checks must be completed before we can send the memorandum of sale to all parties. PLEASE NOTE: The Agent has not tested any equipment, fixtures, fittings or services so cannot verify that they are in working order or fit for the purpose. References to the properties tenure are based on information supplied by the seller. You are advised to check the availability of this property before travelling any distance to view. Every effort has been made to ensure these particulars are correct and not misleading but their accuracy is not guaranteed nor do they form part of any contract.