



The Beeches, Sandwich Road

Manchester



£120,000

The Beeches

Manchester

This stylish one bedroom top floor apartment is situated within the popular Ellesmere Park, within walking distance of Monton Village with its vibrant array of bars and restaurants - making it an ideal first time home or investment!

Council Tax band: A

Tenure: Leasehold

- Stylish one bedroom top floor apartment
- Tastefully decorated throughout to a good standard
- Modern fitted kitchen and a three-piece bathroom
- Well-presented lounge diner
- Benefits from beautifully-maintained communal gardens
- Within walking distance of Monton Village, with access to a fine array of bars and restaurants
- Within walking distance of Salford Royal Hospital
- Benefits from communal parking
- Ideal first time home or investment
- Early viewing essential!



Entrance Hallway

Entered via a hardwood front door. Complete with a ceiling light point, door telephone and laminate flooring.

Lounge

14' 1" x 9' 8" (4.29m x 2.95m)

Complete with a ceiling light point, double glazed window and electric radiator. Fitted with laminate flooring.

Kitchen

10' 4" x 5' 8" (3.15m x 1.73m)

Featuring complementary wall and base units with an integral stainless steel sink. Space for a fridge freezer, washer, electric hob and oven. Complete with a ceiling light point, double glazed window, part tiled walls and lino flooring.

Bathroom

6' 8" x 5' 8" (2.03m x 1.73m)

Featuring a shower, hand wash basin and W.C. Complete with a ceiling light point, fitted storage, part tiled walls and tiled flooring.

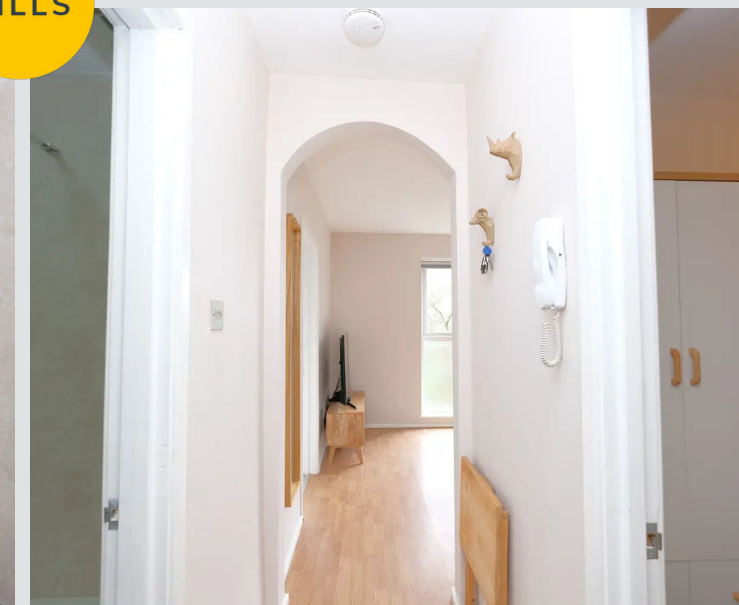
Bedroom

10' 7" x 6' 8" (3.23m x 2.03m)

Complete with a ceiling light point, electric radiator and carpet flooring.

External

Access to residents parking and communal gardens. Opportunity to rent a garage.







Hills | Salfords Estate Agent

Hills Residential, Sentinel House Albert Street - M30 0SS

0161 707 4900

sales@hills.agency

www.hills.agency/



THE PROPERTY MISDESCRIPTIONS ACT 1991 The Agent has not tested any apparatus, equipment, fixtures and fittings or services and so cannot verify that they are in working order or fit for the purpose. A Buyer is advised to obtain verification from their Solicitor or Surveyor. References to the Tenure of a Property are based on information supplied by the Seller. The Agent has not had sight of the title documents. A Buyer is advised to obtain verification from their Solicitor. You are advised to check the availability of this property before travelling any distance to view. Every effort and precaution has been made to ensure these particulars are correct and not misleading but their accuracy is not guaranteed nor do they form part of any contract. If there is any point which is of particular importance to you, please contact us and we will provide any information you require. This is advisable, particularly if you intend to travel some distance to view the property. The mention of any appliances and services within these details does not imply that they are in full and efficient working order. These particulars are in draft form awaiting Vendors confirmation of their accuracy. These details must therefore be taken as a guide only.