



Levens Street

Salford



In Excess of £250,000

Levens Street

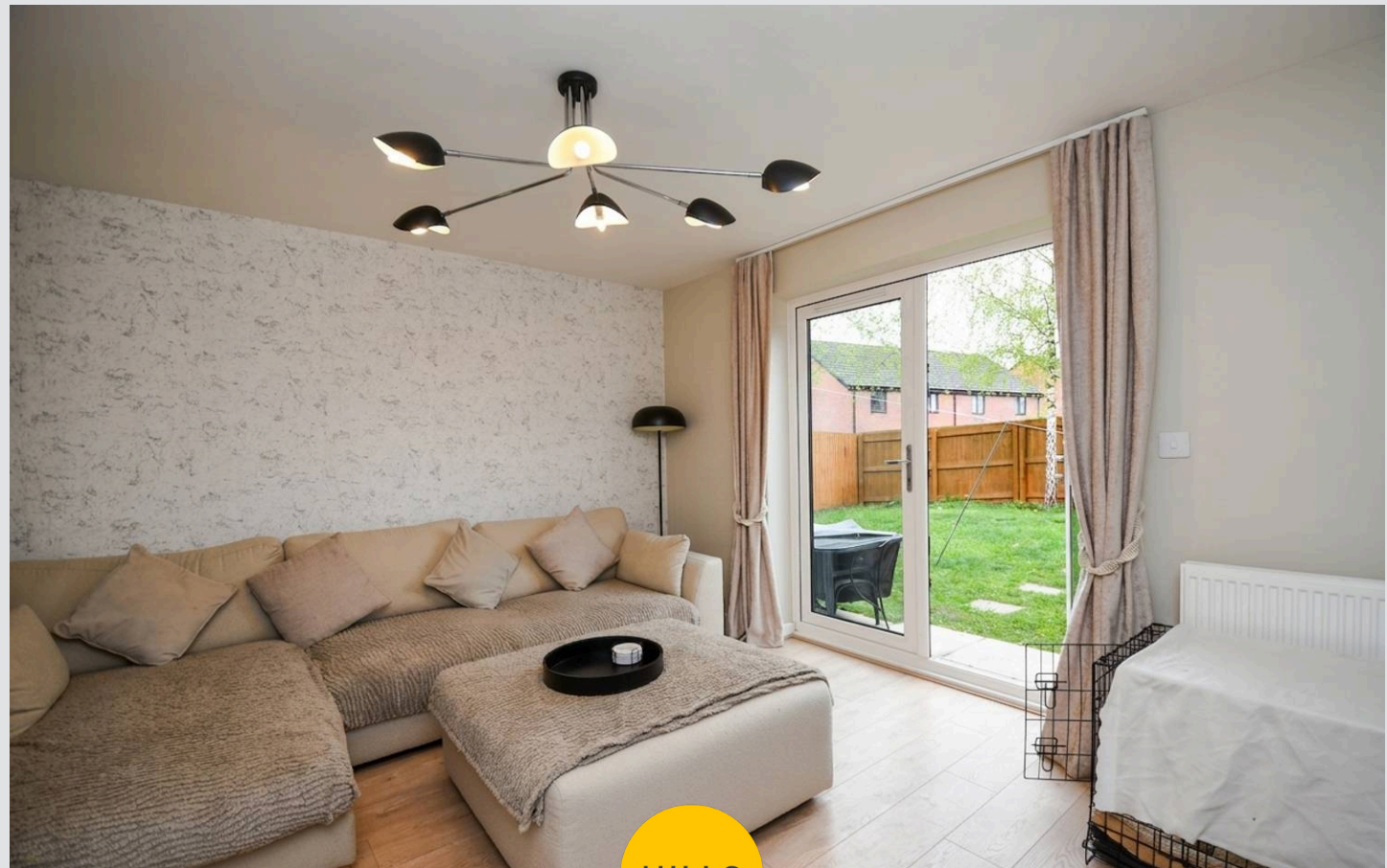
Salford

Stylish, Modern Two Bedroom Semi-Detached Property, Located on a Popular Residential Estate, Featuring a Contemporary Fitted Kitchen and Bathroom

Council Tax band: A

Tenure: Freehold

- Stylish, modern two bedroom semi-detached property
- Located within a popular development
- Spacious lounge with patio doors to the rear
- Modern fitted kitchen, downstairs W.C. and a contemporary three piece bathroom suite
- Two double bedrooms
- Parking to the front
- Well presented, low maintenance garden to the rear
- Perfect first time buy
- Surrounded by excellent amenities and well served by brilliant transport links
- Viewing is highly recommended!



HILLS



Entrance Hallway
3' 11" x 4' 4" (1.19m x 1.32m)

Lounge
12' 11" x 13' 1" (3.93m x 3.98m)

Kitchen
11' 7" x 10' 0" (3.53m x 3.04m)

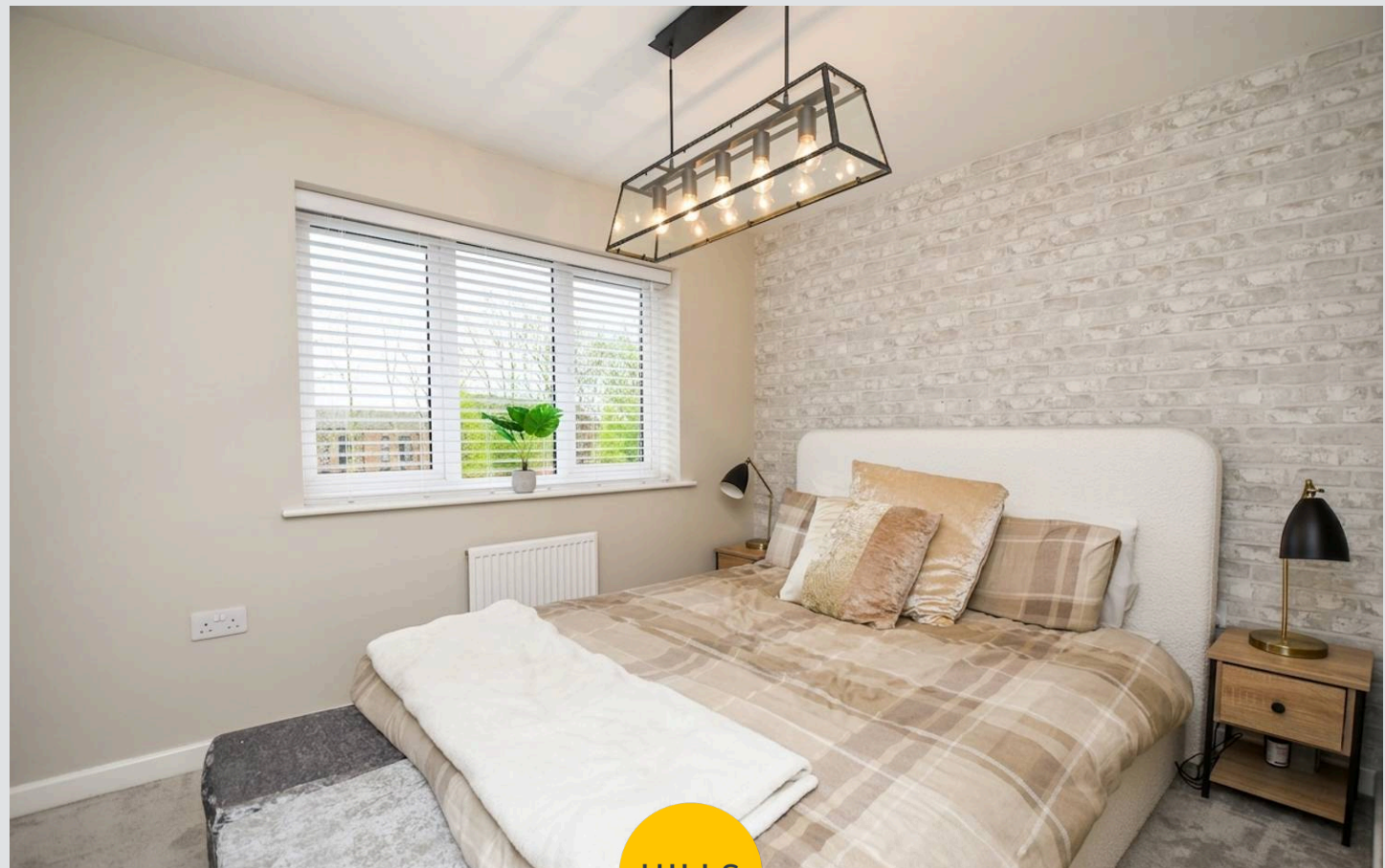
W.C.
3' 7" x 5' 3" (1.10m x 1.59m)

Landing

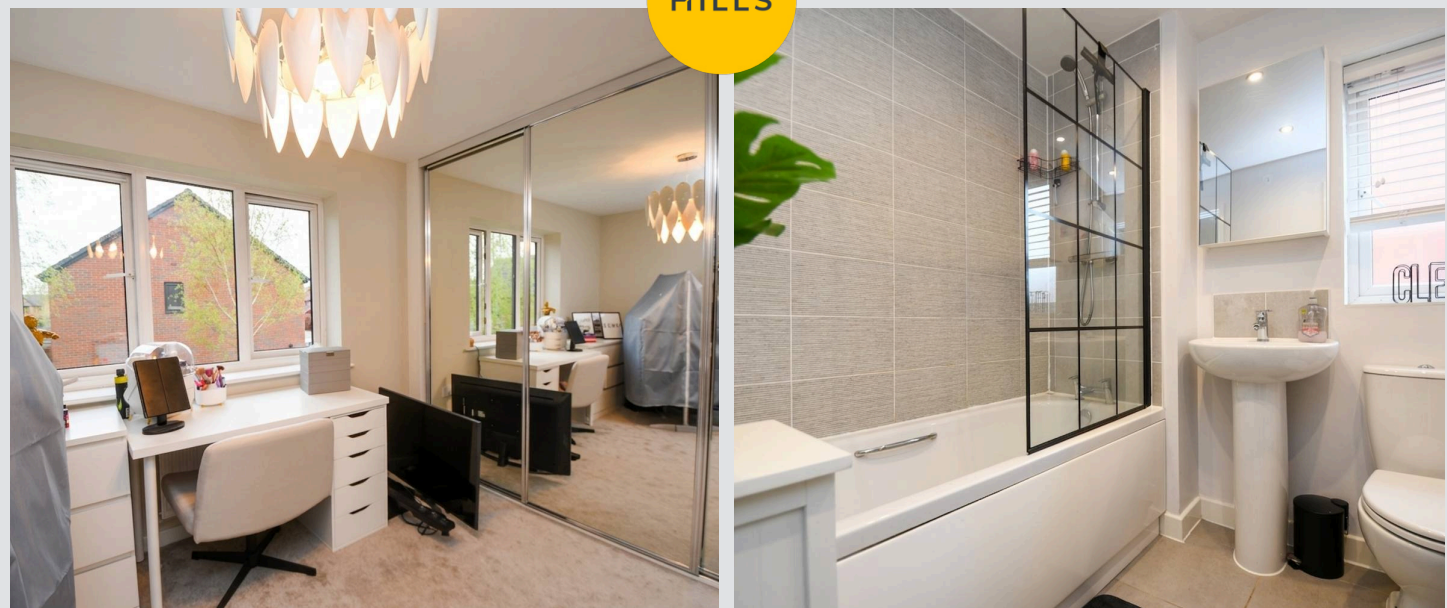
Bedroom One
7' 5" x 6' 8" (2.27m x 2.03m)

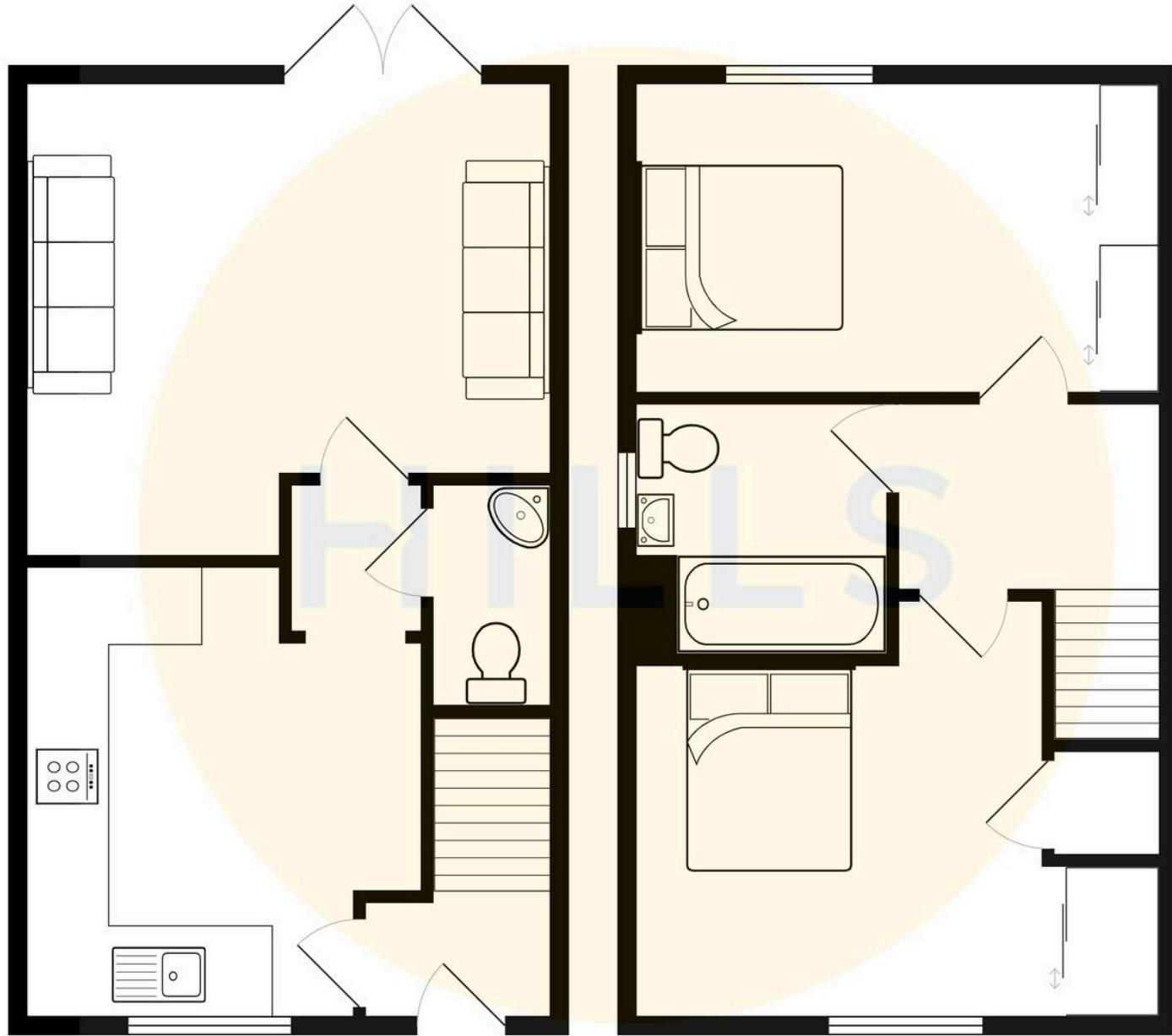
Bedroom Two
10' 0" x 11' 2" (3.04m x 3.41m)

Bathroom
10' 11" x 11' 2" (3.32m x 3.41m)



HILLS







Hills | Salfords Estate Agent

Hills Residential, Sentinel House Albert Street – M30 0SS

0161 707 4900

sales@hills.agency

www.hills.agency/



By law, we are required to conduct anti-money laundering checks on all potential buyers and sellers. In line with HMRC guidelines, our trusted partner, Coadjute, will securely manage these checks on our behalf. A non-refundable fee of £45 + VAT per person will apply, and Coadjute will handle the payment. Once an offer is accepted, Coadjute will send a secure link for you to complete the biometric checks. These checks must be completed before we can send the memorandum of sale to all parties. PLEASE NOTE: The Agent has not tested any equipment, fixtures, fittings or services so cannot verify that they are in working order or fit for the purpose. References to the properties tenure are based on information supplied by the seller. You are advised to check the availability of this property before travelling any distance to view. Every effort has been made to ensure these particulars are correct and not misleading but their accuracy is not guaranteed nor do they form part of any contract.