



Heathfield Drive, Tyldesley

Manchester



£240,000

65 Heathfield Drive

Tyldesley, Manchester

NO VENDOR CHAIN Two Bedroom Bungalow
Situated on a Quiet Estate Within Walking Distance
of the Guided Busway! Within Easy Access of Parr
Bridge Retail Park and Tyldesley Town Centre
Council Tax band: B

Tenure: Leasehold

- Extended Two Bedroom Semi-Detached Bungalow
- Located on a Quiet Residential Estate Close to Green Space
- Close to the Guided Busway which Provides Transport Links into Both Tyldesley Town Centre and Manchester City Centre
- Two Double Bedrooms
- Bay-Fronted Living Room and a Three-Piece Shower Room
- Extended Fitted Kitchen
- Ideal for Downsizers
- Viewing is Highly Recommended!



HILLS



Porch

Hallway

Lounge

14' 4" x 11' 3" (4.36m x 3.42m)

Kitchen

10' 2" x 10' 4" (3.11m x 3.16m)

Bedroom One

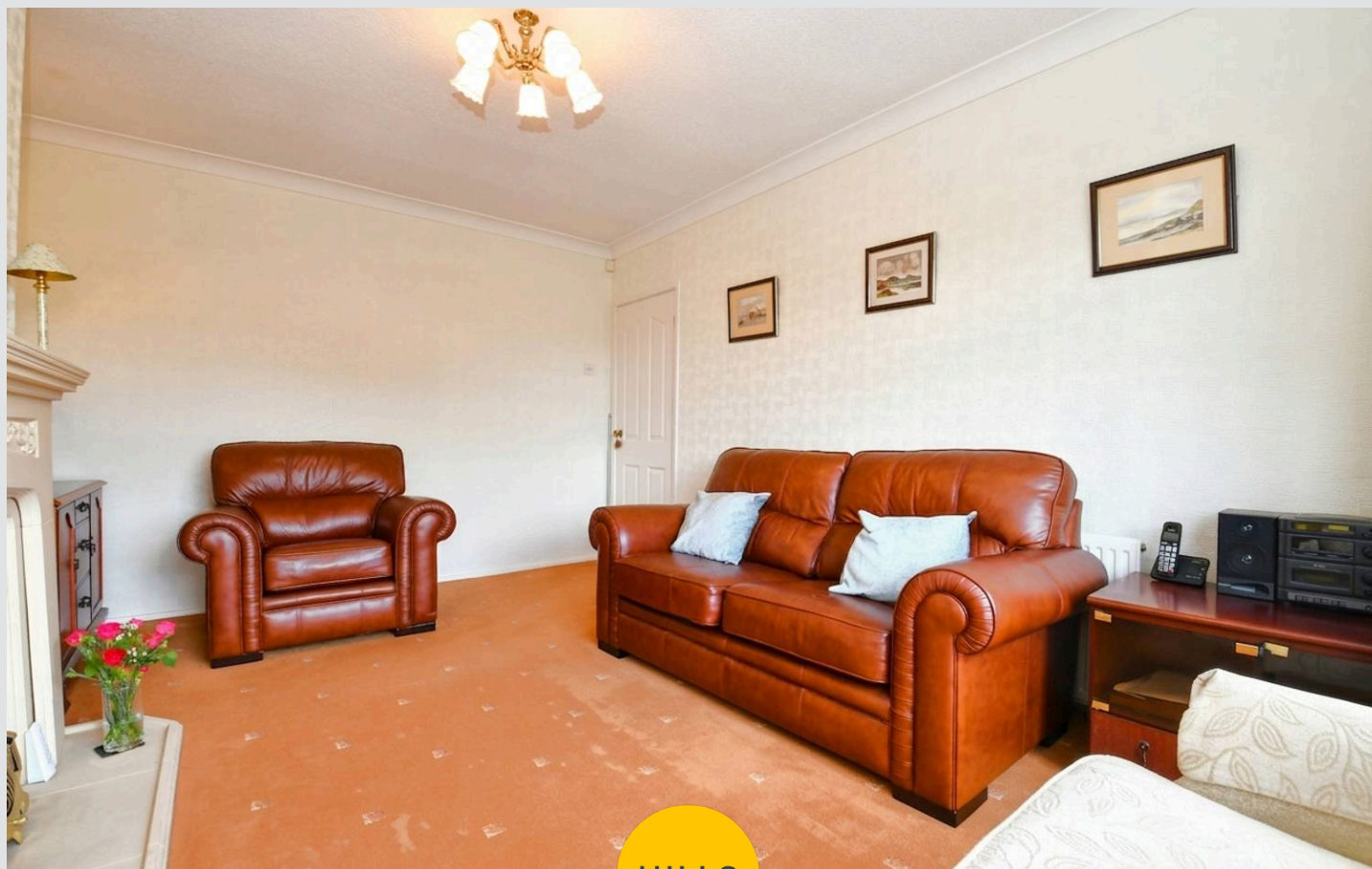
10' 7" x 10' 3" (3.23m x 3.13m)

Bedroom Two

11' 2" x 11' 5" (3.40m x 3.47m)

Bathroom

7' 0" x 6' 6" (2.13m x 1.97m)



HILLS



Porch

Hallway

Lounge

14' 4" x 11' 3" (4.36m x 3.42m)

Kitchen

10' 2" x 10' 4" (3.11m x 3.16m)

Bedroom One

10' 7" x 10' 3" (3.23m x 3.13m)

Bedroom Two

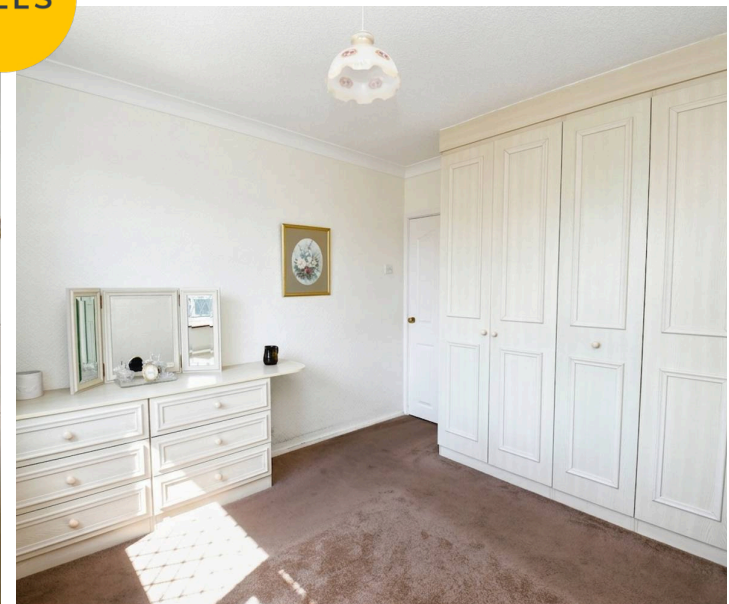
11' 2" x 11' 5" (3.40m x 3.47m)

Bathroom

7' 0" x 6' 6" (2.13m x 1.97m)



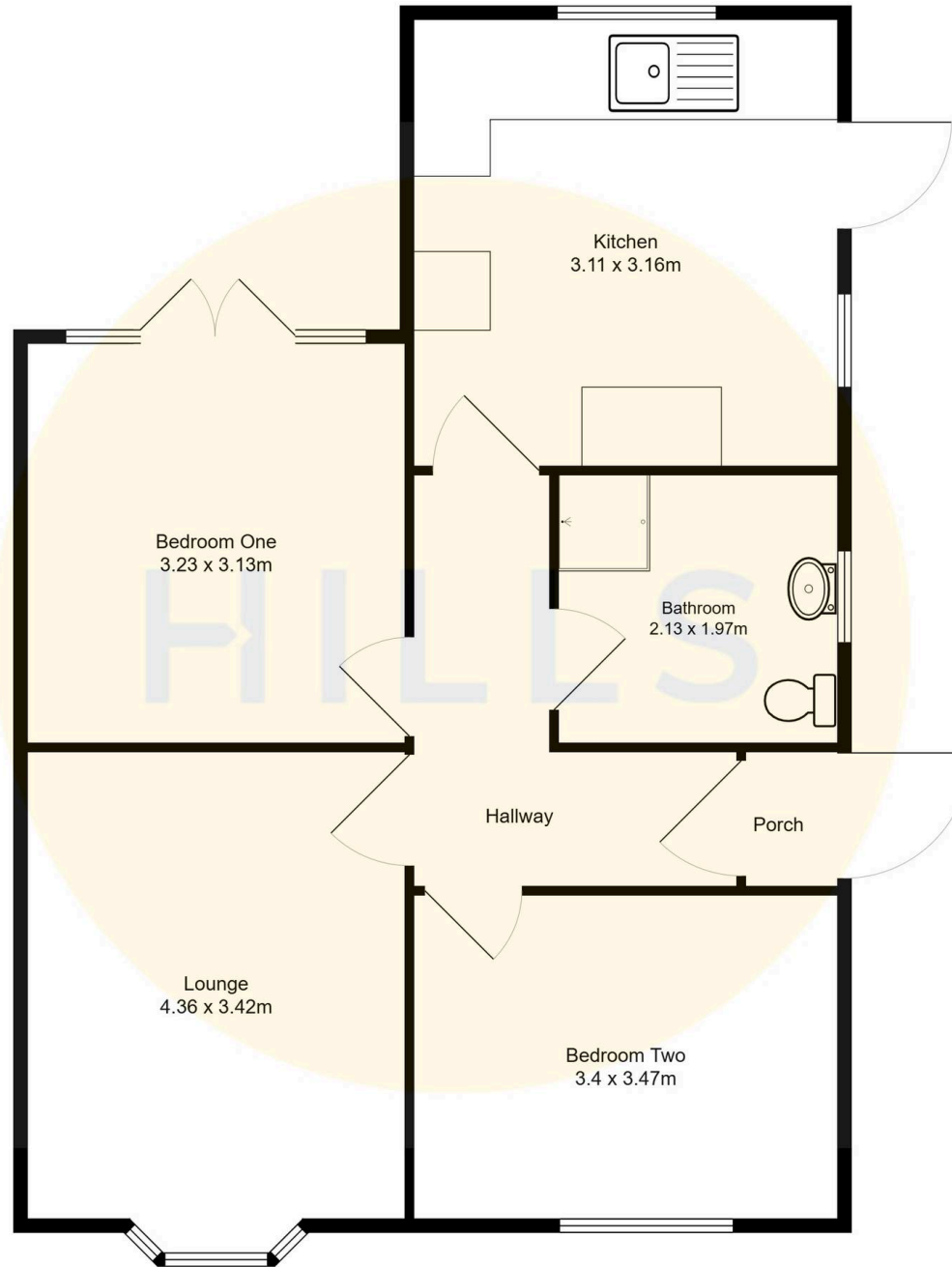
HILLS





HILLS







Hills | Salfords Estate Agent

Hills Residential, Sentinel House Albert Street - M30 0SS

0161 707 4900

sales@hills.agency

www.hills.agency/



By law, we are required to conduct anti-money laundering checks on all potential buyers and sellers. In line with HMRC guidelines, our trusted partner, Coadjute, will securely manage these checks on our behalf. A non-refundable fee of £45 + VAT per person will apply, and Coadjute will handle the payment. Once an offer is accepted, Coadjute will send a secure link for you to complete the biometric checks. These checks must be completed before we can send the memorandum of sale to all parties. PLEASE NOTE: The Agent has not tested any equipment, fixtures, fittings or services so cannot verify that they are in working order or fit for the purpose. References to the properties tenure are based on information supplied by the seller. You are advised to check the availability of this property before travelling any distance to view. Every effort has been made to ensure these particulars are correct and not misleading but their accuracy is not guaranteed nor do they form part of any contract.