



Goulden Street

Salford



In Excess of £180,000

# Goulden Street

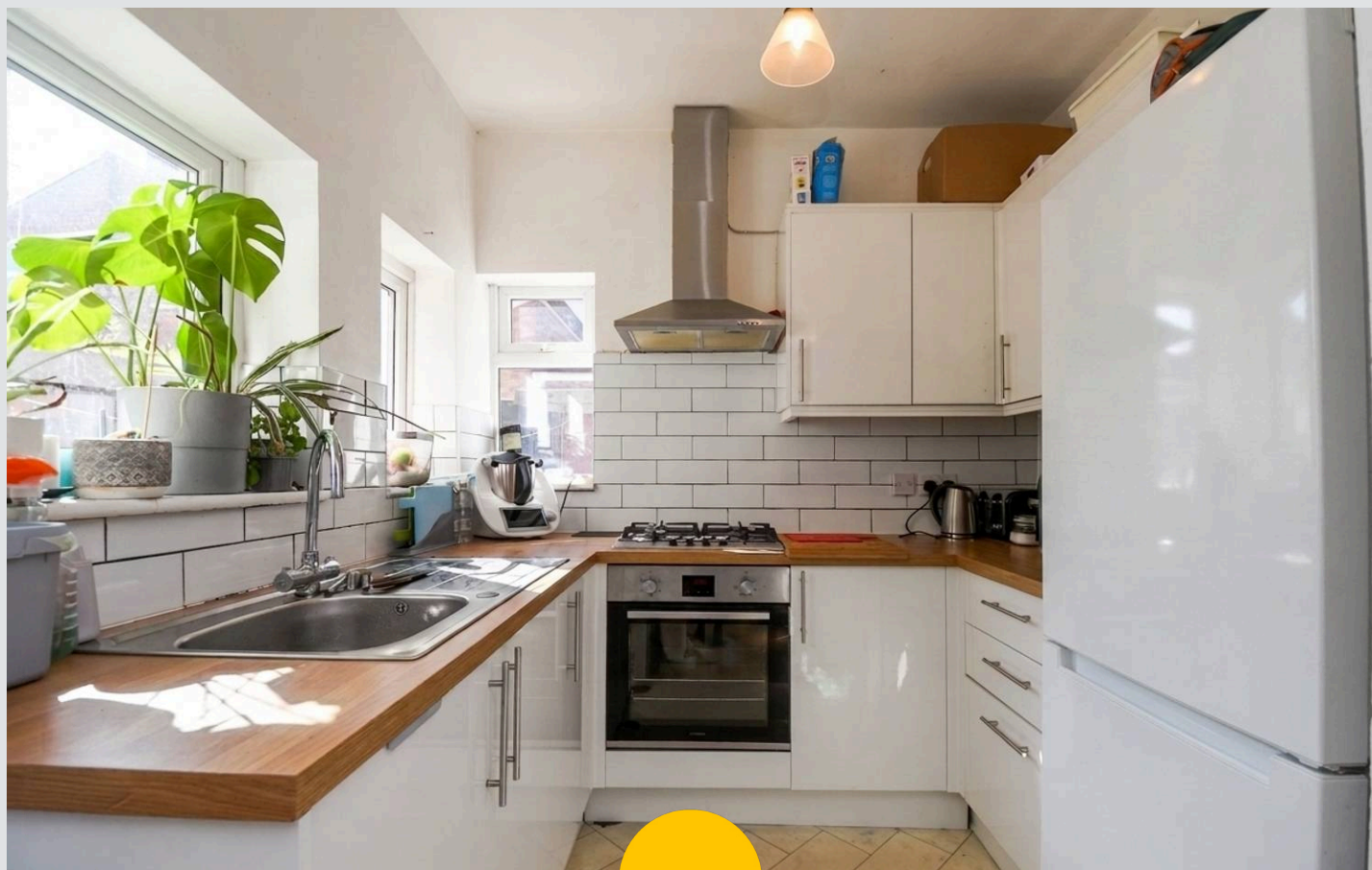
Salford

TAKE A LOOK at this TWO DOUBLE BEDROOM TERRACED PROPERTY coming to the market CHAIN FREE! Featuring two reception rooms and a modern fitted kitchen. Early viewing is essential!

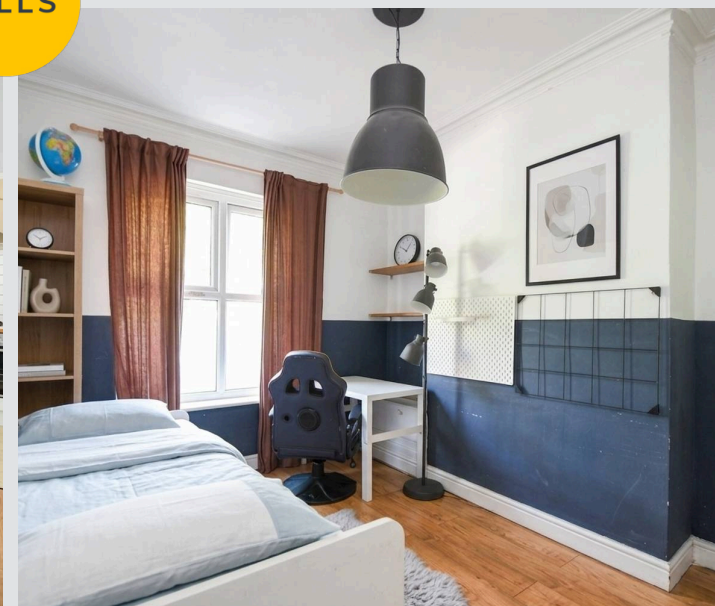
Council Tax band: A

Tenure: Freehold

- Two Bedroom Terraced Property coming to the market CHAIN FREE!
- Great location, close to excellent transport links, with access to Salford Quays, MediaCityUK and Manchester
- Two Spacious Reception Rooms
- Modern fitted kitchen
- Contemporary three-piece bathroom suite
- Two double bedrooms
- Perfect first time buy!
- Low maintenance courtyard garden
- Viewing is highly recommended!



HILLS



**Entrance Hallway**

14' 11" x 4' 1" (4.55m x 1.24m)

**Lounge**

10' 7" x 12' 11" (3.22m x 3.94m)

**Dining Room**

11' 3" x 12' 2" (3.43m x 3.70m)

**Kitchen**

7' 6" x 8' 6" (2.28m x 2.58m)

**Landing**

**Bedroom One**

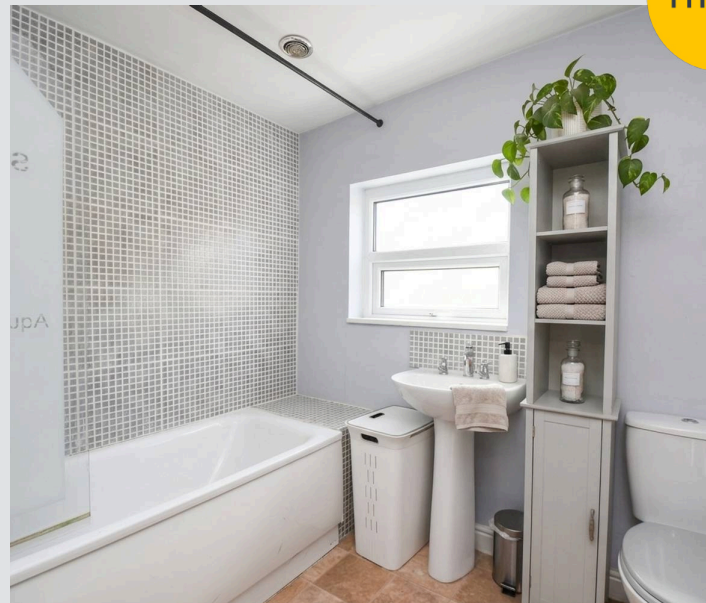
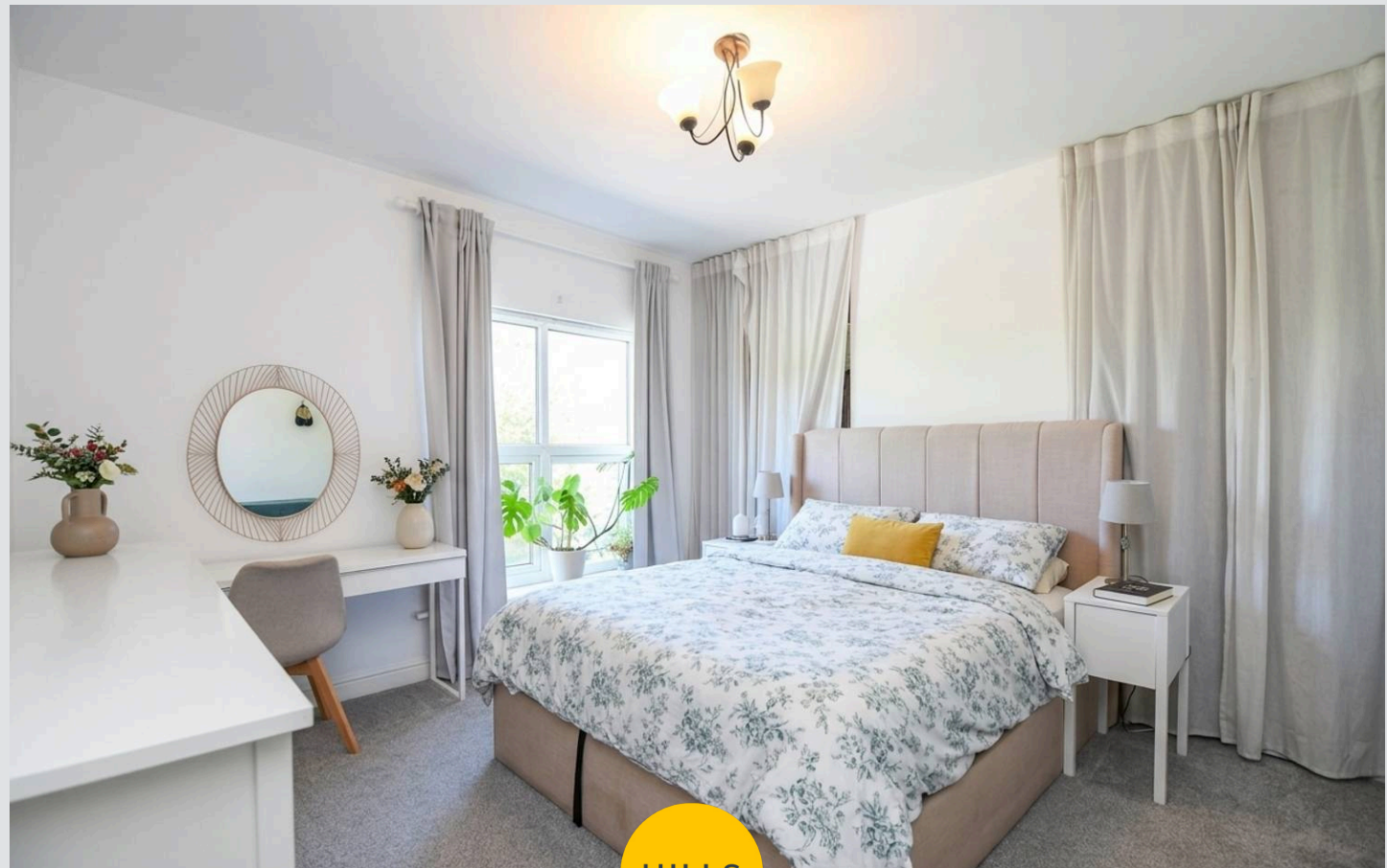
13' 5" x 12' 7" (4.09m x 3.84m)

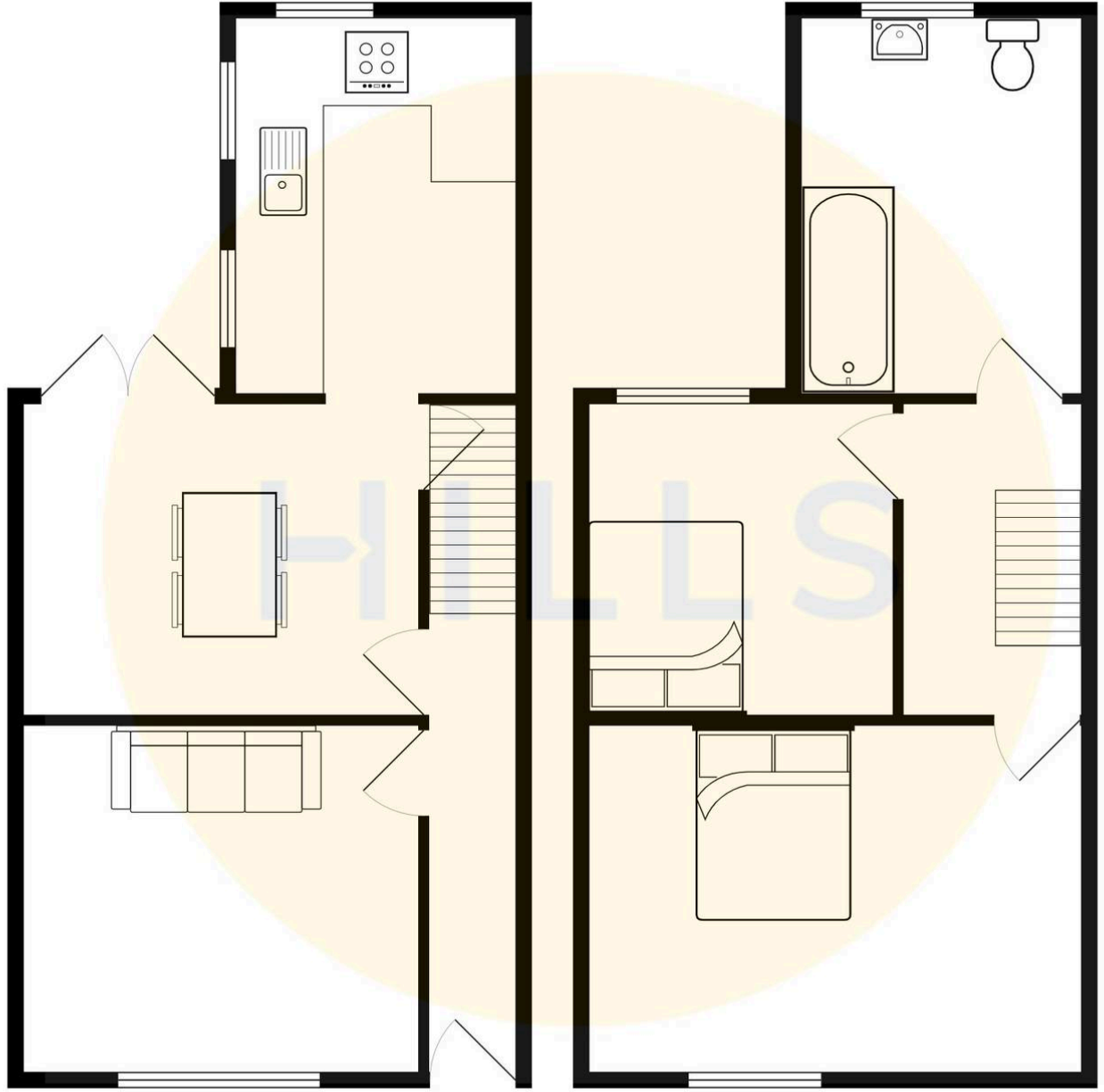
**Bedroom Two**

9' 2" x 12' 3" (2.80m x 3.73m)

**Bathroom**

7' 10" x 7' 9" (2.38m x 2.37m)







## Hills | Salfords Estate Agent

Hills Residential, Sentinel House Albert Street - M30 0SS

0161 707 4900

[sales@hills.agency](mailto:sales@hills.agency)

[www.hills.agency/](http://www.hills.agency/)



By law, we are required to conduct anti-money laundering checks on all potential buyers and sellers. In line with HMRC guidelines, our trusted partner, Coadjute, will securely manage these checks on our behalf. A non-refundable fee of £45 + VAT per person will apply, and Coadjute will handle the payment. Once an offer is accepted, Coadjute will send a secure link for you to complete the biometric checks. These checks must be completed before we can send the memorandum of sale to all parties. PLEASE NOTE: The Agent has not tested any equipment, fixtures, fittings or services so cannot verify that they are in working order or fit for the purpose. References to the properties tenure are based on information supplied by the seller. You are advised to check the availability of this property before travelling any distance to view. Every effort has been made to ensure these particulars are correct and not misleading but their accuracy is not guaranteed nor do they form part of any contract.