



Cotton Close, Tyldesley

Manchester



Offers Over £375,000

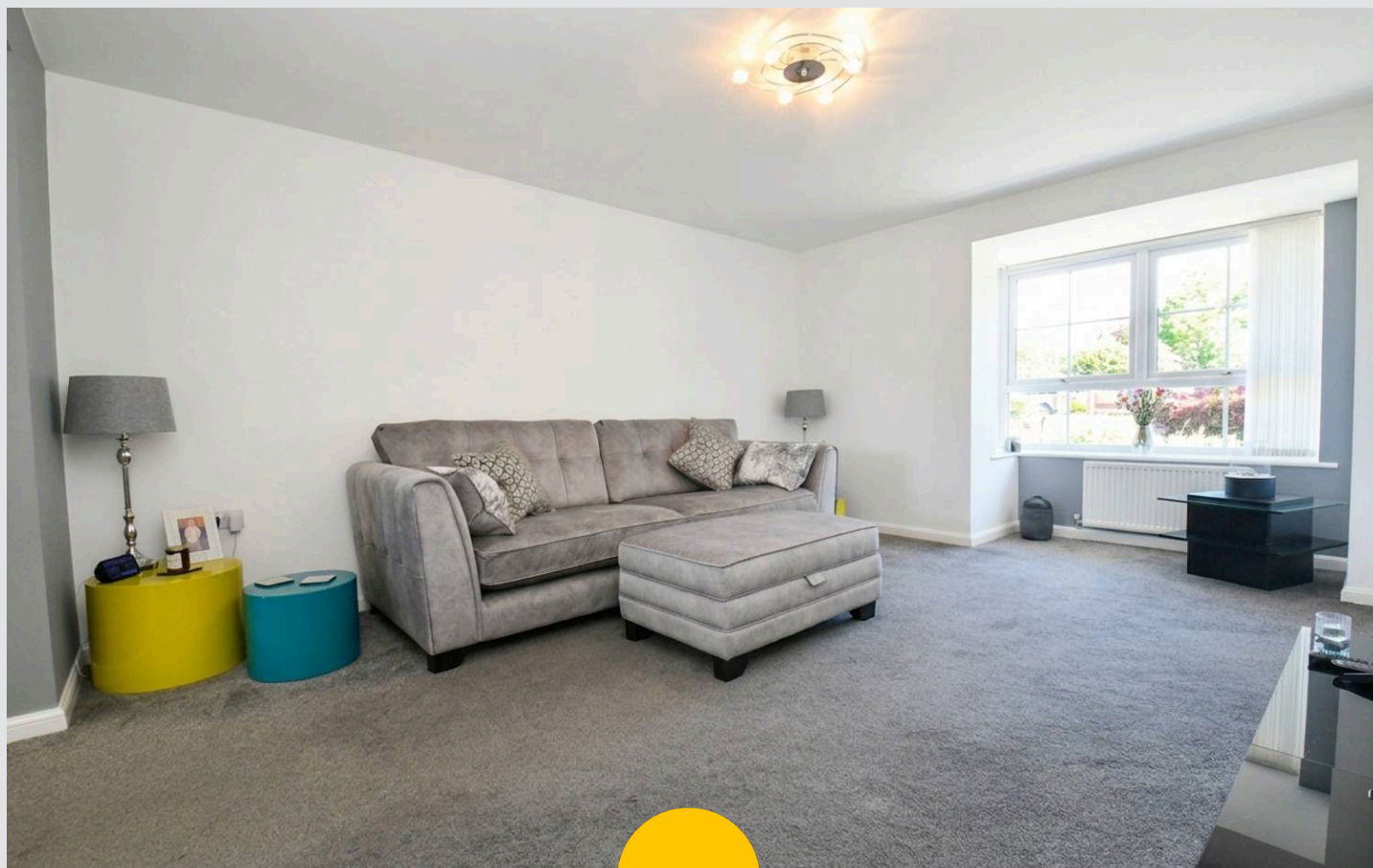
16 Cotton Close

Tyldesley, Manchester

Lovely Modern Four Bedroom Detached Property
Located Within Walking Distance of Fred Longworth
High School and Tyldesley Town Centre!
Council Tax band: D

Tenure: Leasehold

- Lovely Four Bedroom Detached Property
- Located Just a Short Walk from Fred Longworth High School and Tyldesley Town Centre, Close to Plenty of Amenities
- Driveway and an Integral Garage for Off-Road Parking
- Spacious Lounge and a Dining Room with a Patio Door to the Garden
- Modern Fitted Kitchen, a Utility Room and a Downstairs W/C
- Four Well-Proportioned Bedrooms, with an Ensuite to the Main Bedroom
- Modern Three-Piece Family Bathroom
- Within Easy Access of Transport Links to Manchester and Warrington, including the Guided Busway and the A580
- Nearby Plenty of Green Space, with Fields and Woodland Within Walking Distance



HILLS



Lounge

14' 6" x 12' 5" (4.42m x 3.79m)

Dining Room

11' 4" x 8' 1" (3.45m x 2.47m)

Kitchen

11' 3" x 10' 8" (3.43m x 3.24m)

Utility Room

7' 4" x 5' 2" (2.24m x 1.58m)

Downstairs W.C.

5' 3" x 3' 8" (1.59m x 1.11m)

Garage

17' 8" x 8' 9" (5.38m x 2.67m)

Landing

Bedroom One

13' 7" x 12' 5" (4.15m x 3.79m)

En suite

7' 6" x 4' 2" (2.28m x 1.28m)

Bedroom Two

12' 5" x 9' 2" (3.79m x 2.80m)

Bedroom Three

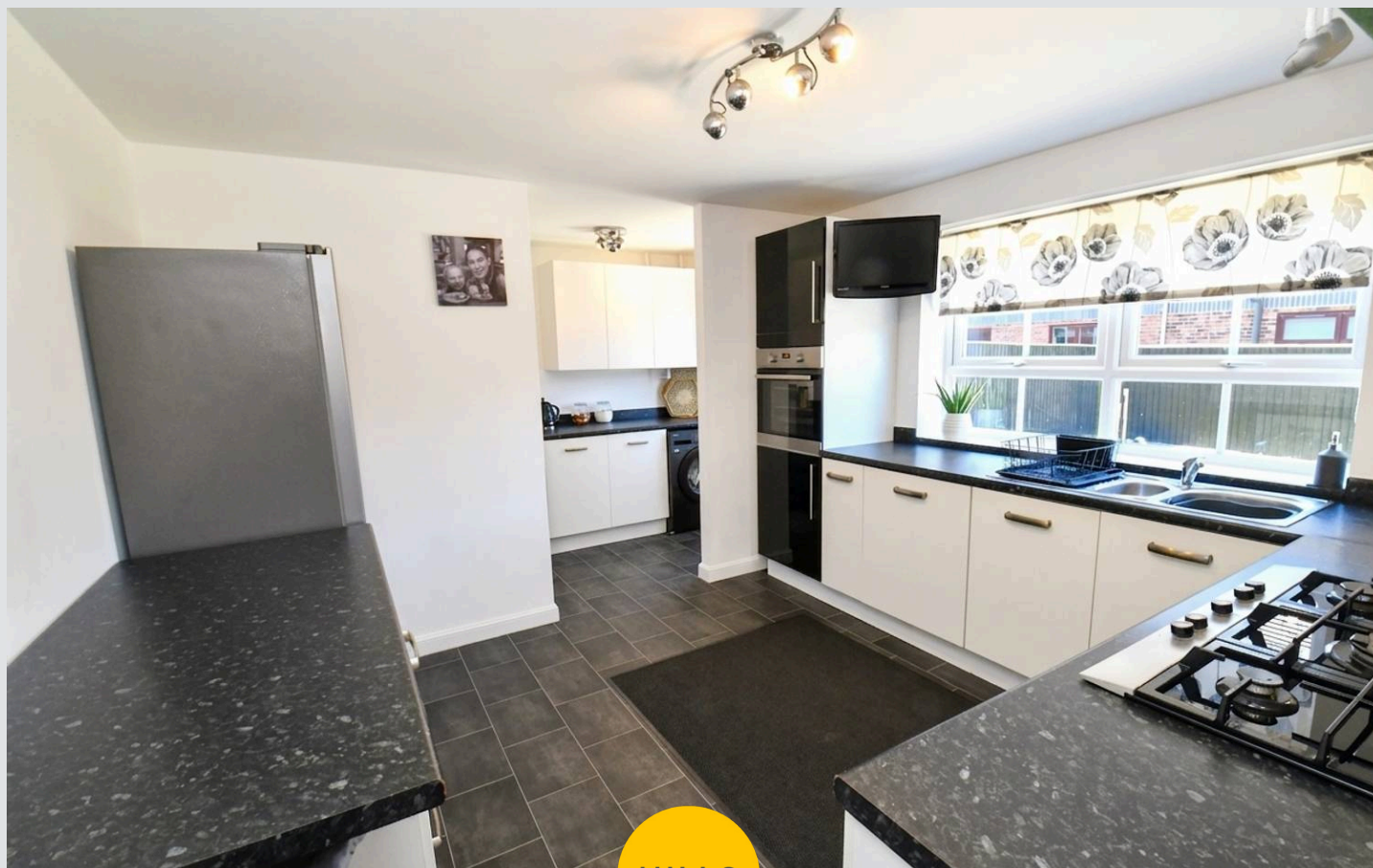
12' 4" x 8' 9" (3.75m x 2.66m)

Bedroom Four

11' 2" x 8' 9" (3.40m x 2.66m)

Bathroom

6' 1" x 6' 0" (1.85m x 1.84m)



Lounge

14' 6" x 12' 5" (4.42m x 3.79m)

Dining Room

11' 4" x 8' 1" (3.45m x 2.47m)

Kitchen

11' 3" x 10' 8" (3.43m x 3.24m)

Utility Room

7' 4" x 5' 2" (2.24m x 1.58m)

Downstairs W.C.

5' 3" x 3' 8" (1.59m x 1.11m)

Garage

17' 8" x 8' 9" (5.38m x 2.67m)

Landing**Bedroom One**

13' 7" x 12' 5" (4.15m x 3.79m)

En suite

7' 6" x 4' 2" (2.28m x 1.28m)

Bedroom Two

12' 5" x 9' 2" (3.79m x 2.80m)

Bedroom Three

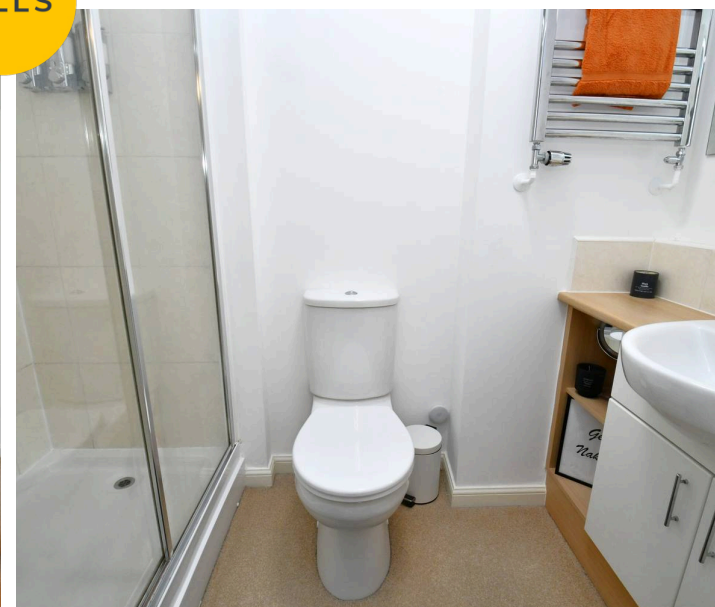
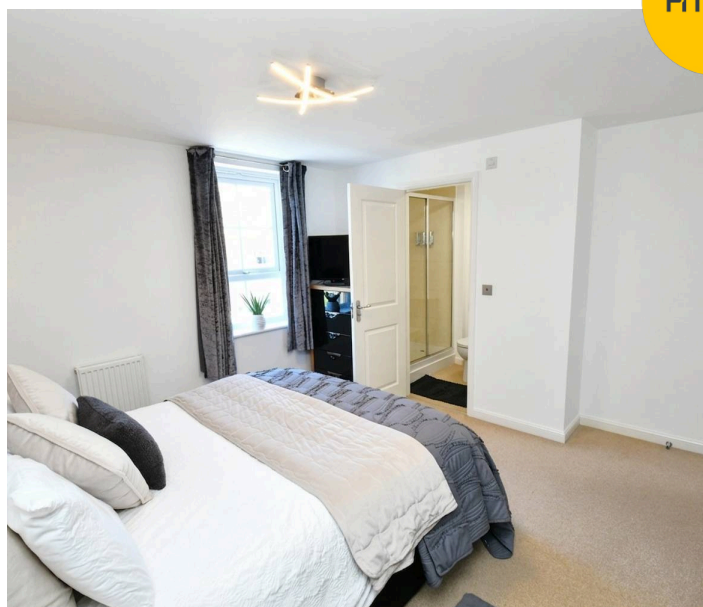
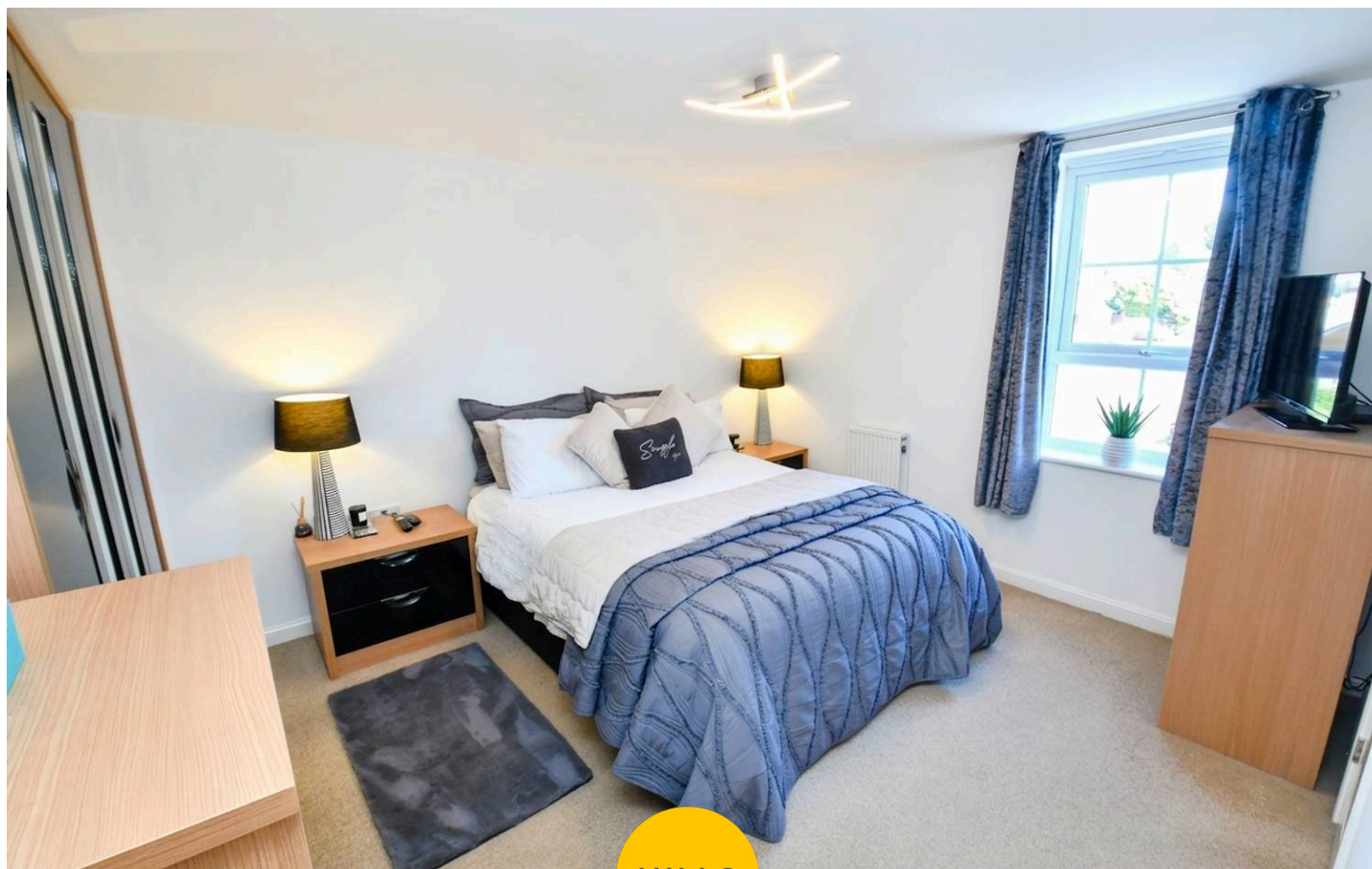
12' 4" x 8' 9" (3.75m x 2.66m)

Bedroom Four

11' 2" x 8' 9" (3.40m x 2.66m)

Bathroom

6' 1" x 6' 0" (1.85m x 1.84m)





HILLS







Hills | Salfords Estate Agent

Hills Residential, Sentinel House Albert Street - M30 0SS

0161 707 4900

sales@hills.agency

www.hills.agency/



By law, we are required to conduct anti-money laundering checks on all potential buyers and sellers. In line with HMRC guidelines, our trusted partner, Coadjute, will securely manage these checks on our behalf. A non-refundable fee of £45 + VAT per person will apply, and Coadjute will handle the payment. Once an offer is accepted, Coadjute will send a secure link for you to complete the biometric checks. These checks must be completed before we can send the memorandum of sale to all parties. PLEASE NOTE: The Agent has not tested any equipment, fixtures, fittings or services so cannot verify that they are in working order or fit for the purpose. References to the properties tenure are based on information supplied by the seller. You are advised to check the availability of this property before travelling any distance to view. Every effort has been made to ensure these particulars are correct and not misleading but their accuracy is not guaranteed nor do they form part of any contract.