



Bevill Square, Salford

Salford



In Excess of £170,000

Bevill Square

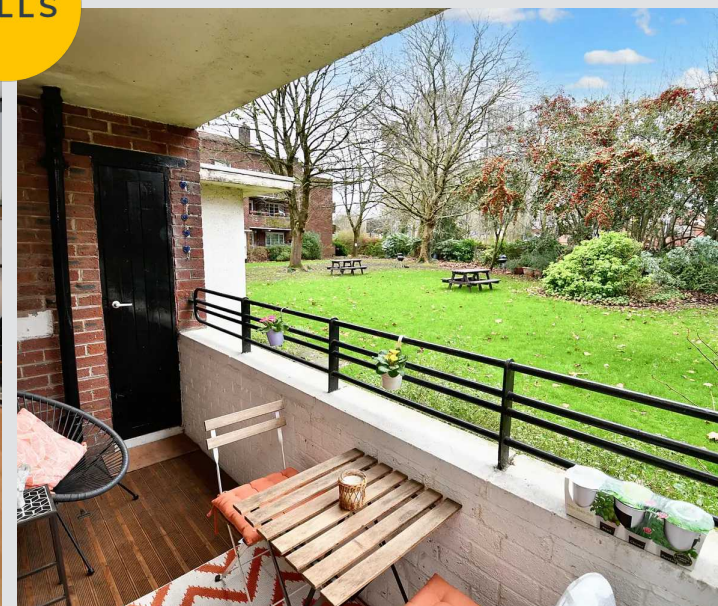
Salford, Salford

GROUND FLOOR TWO BEDROOM APARTMENT WITHIN WALKING DISTANCE TO MANCHESTER CITY CENTRE!! Stop and take a look at this STUNNING APARTMENT that ifeatures...

Council Tax band: A

Tenure: Leasehold

- Beautifully Presented, Two Bedroom Ground Floor Apartment
- Tastefully Decorated Throughout
- Modern Fitted Kitchen and a Spacious, Contemporary Three-Piece Bathroom
- Spacious Lounge Diner
- Within Walking Distance of Manchester City Centre, with a Range of Amenities including Bars, Shops and Restaurants
- Set Within Well-Maintained Communal Gardens, Featuring Laid-to-Lawn Grass, Mature Trees and Shrubbery
- Benefits from an Allocated Parking Space
- Ideal First Time Home or Investment, Viewing is Highly Recommended!



Entrance

A welcoming entrance hallway complete with wood effect flooring, ceiling light points, wall mounted radiator and access to a large storage cupboard.

Lounge

Ceiling light point, Double glazed window to rear elevation, decorative fireplace and surround and wall mounted radiator. Carpeted flooring.

Kitchen

9' 4" x 8' 0" (2.84m x 2.44m)

Fitted with a range of wall and base units, with complimentary work surfaces and an integral sink and drainer. With integrated fridge and separate freezer, with space for a washer machine and oven. Chimney cooker hood. Inset light points, double glazed window to the front elevation and a uPVC door leading onto a private balcony. Finished with wood effect flooring.

Bedroom One

12' 10" x 9' 7" (3.91m x 2.92m)

Double glazed window to the rear elevation, ceiling light point, wall mounted radiator. Wood effect flooring.

Bedroom Two

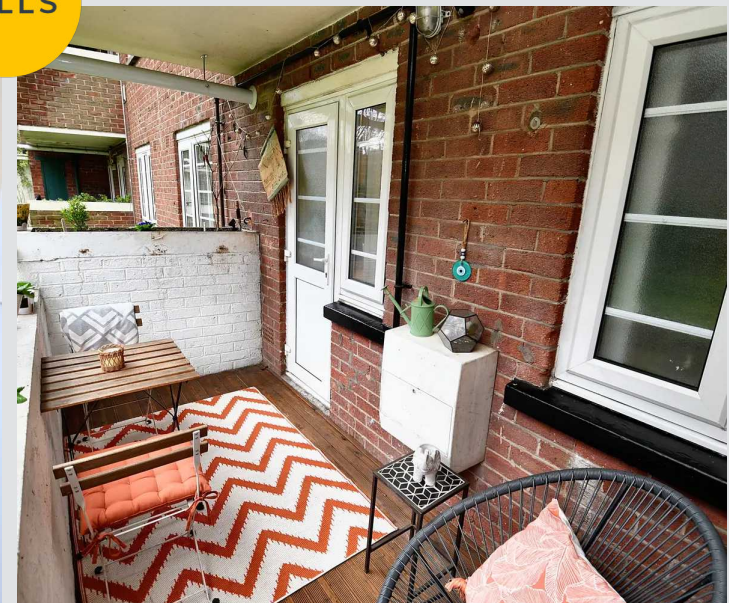
11' 8" x 10' 11" (3.55m x 3.32m)

Double glazed window to the front elevation, ceiling light point, wall mounted radiator. Wood effect flooring.

Bathroom

9' 1" x 6' 11" (2.78m x 2.10m)

Fitted with a modern four piece bathroom suit including panelled bath, walk in corner shower, low level W.C and a hand wash basin. Double glazed window to the front, inset lighting and wall mounted radiator. Finished with tile effect lino.



Balony

Accessed via the kitchen, the property has a sun drenched balcony with views of the well maintained gardens and also has an outdoor storage cupboard.

External

The property sits in a private, purpose built residential apartment block. With ample residents parking and well-kept and mature communal gardens all surrounded by gates.



HILLS







HILLS

Hills | Salfords Estate Agent

Hills Residential, Sentinel House Albert Street - M30 0SS

0161 707 4900

sales@hills.agency

www.hills.agency/



THE PROPERTY MISDESCRIPTIONS ACT 1991 The Agent has not tested any apparatus, equipment, fixtures and fittings or services and so cannot verify that they are in working order or fit for the purpose. A Buyer is advised to obtain verification from their Solicitor or Surveyor. References to the Tenure of a Property are based on information supplied by the Seller. The Agent has not had sight of the title documents. A Buyer is advised to obtain verification from their Solicitor. You are advised to check the availability of this property before travelling any distance to view. Every effort and precaution has been made to ensure these particulars are correct and not misleading but their accuracy is not guaranteed nor do they form part of any contract. If there is any point which is of particular importance to you, please contact us and we will provide any information you require. This is advisable, particularly if you intend to travel some distance to view the property. The mention of any appliances and services within these details does not imply that they are in full and efficient working order. These particulars are in draft form awaiting Vendors confirmation of their accuracy. These details must therefore be taken as a guide only.