



Swinton Park Road

Salford



£400,000

Swinton Park Road

Salford

Stunning, Double Story and Single Story Extended Three Bedroom Semi-Detached Property! Boasting an open plan lounge, kitchen diner and an orangery complete with a roof lantern!

Council Tax band: D

Tenure: Freehold

- Stunning, extended three double bedroom semi-detached family home
- Overlooking Oakwood Park to the rear
- Stunning open plan family room to the rear complete with a modern fitted kitchen, lounge and dining space
- Would make a great family home, early viewing highly advised
- Three generously sized bedrooms and access to the loft, which is currently used as an office
- Downstairs W.C. and utility space
- Two three-piece modern bathroom suites
- Driveway to the Front Providing Off-Road Parking for Several Cars
- Close to Excellent Transport Links into Salford Quays, Media City and Manchester City Centre
- Close to Oakwood Park, Local Schooling and Within Easy Access of Salford Royal Hospital



HILLS



Entrance Hallway

Kitchen/Lounge/Diner

19' 2" x 17' 7" (5.84m x 5.35m)

Lounge

14' 5" x 11' 1" (4.39m x 3.39m)

Orangery

17' 2" x 9' 2" (5.22m x 2.79m)

Utility Room

Downstairs W.C.

Landing

Bedroom One

18' 5" x 9' 5" (5.61m x 2.86m)

Bedroom Two

11' 9" x 11' 0" (3.57m x 3.36m)

Bedroom Three

13' 3" x 7' 9" (4.03m x 2.37m)

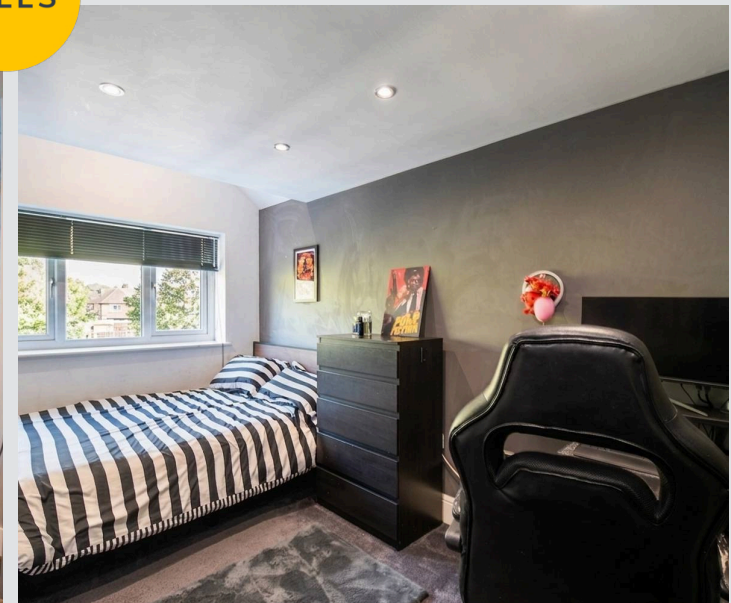
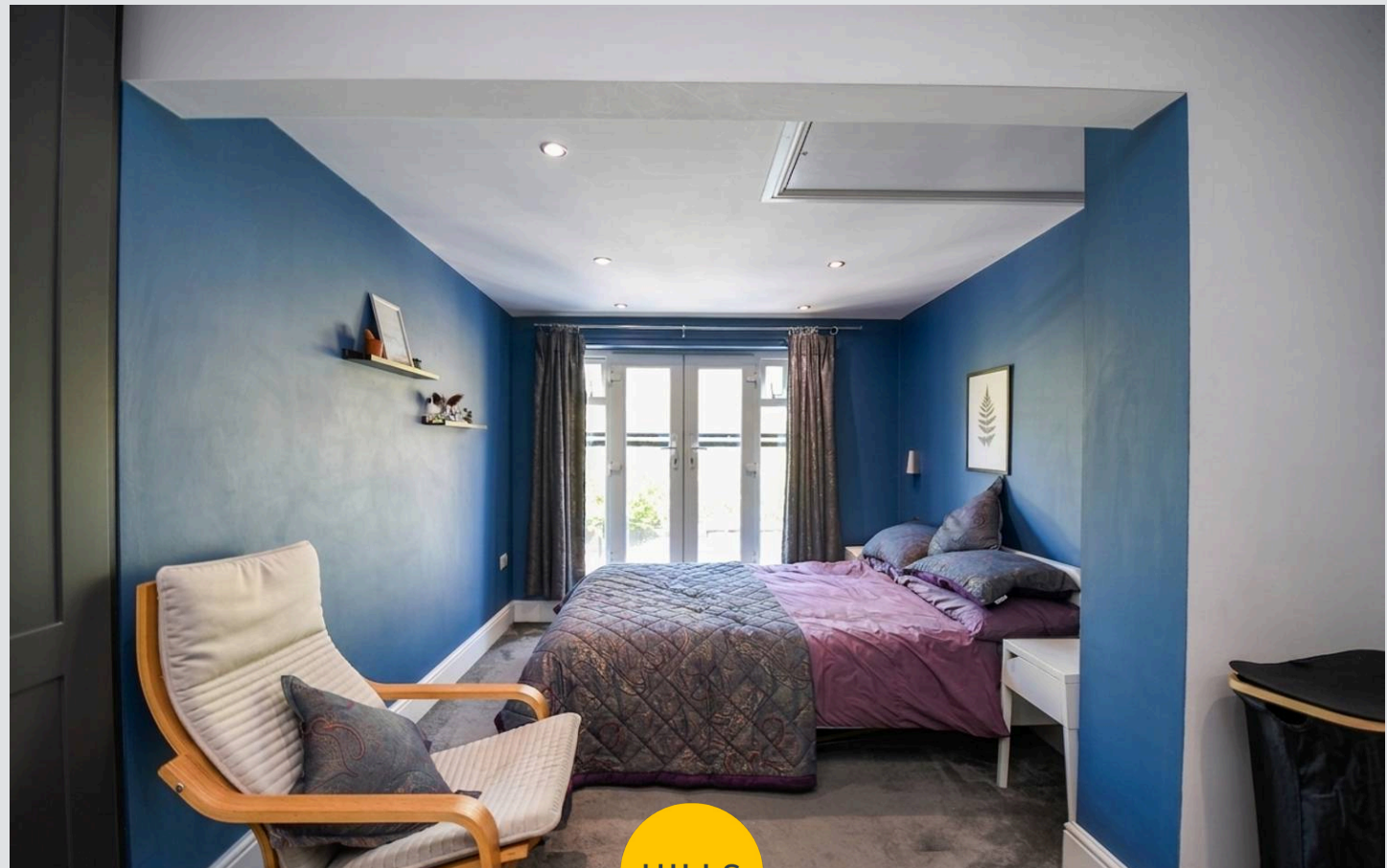
Bathroom

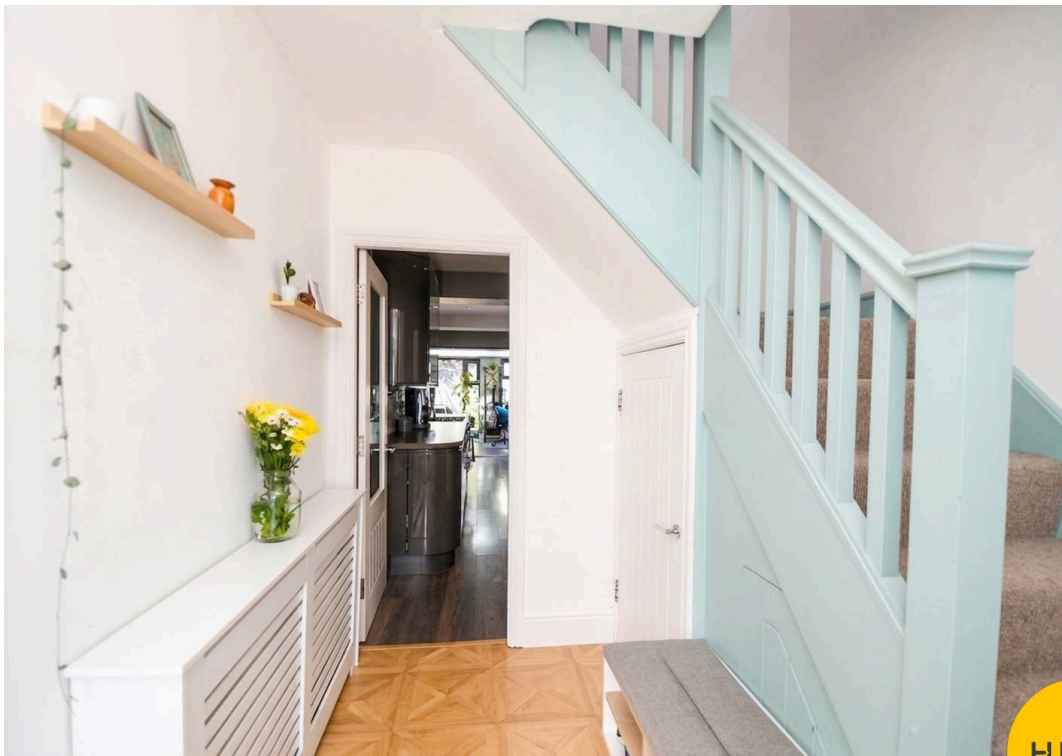
7' 7" x 5' 11" (2.32m x 1.80m)

Shower Room

7' 10" x 4' 8" (2.38m x 1.41m)

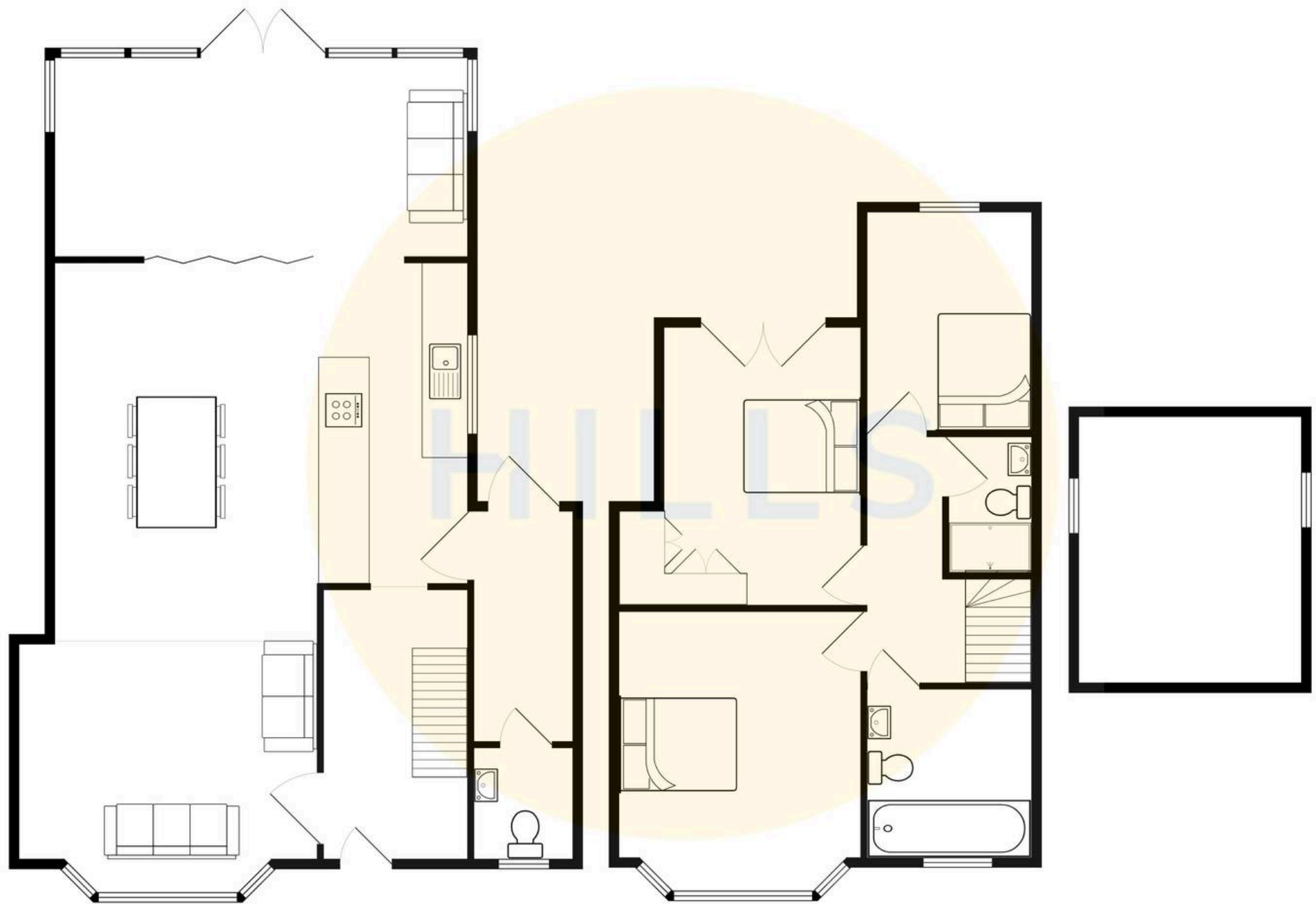
Loft Room





HILLS







Hills | Salfords Estate Agent

Hills Residential, Sentinel House Albert Street – M30 0SS

0161 707 4900

sales@hills.agency

www.hills.agency/



By law, we are required to conduct anti-money laundering checks on all potential buyers and sellers. In line with HMRC guidelines, our trusted partner, Coadjute, will securely manage these checks on our behalf. A non-refundable fee of £45 + VAT per person will apply, and Coadjute will handle the payment. Once an offer is accepted, Coadjute will send a secure link for you to complete the biometric checks. These checks must be completed before we can send the memorandum of sale to all parties. PLEASE NOTE: The Agent has not tested any equipment, fixtures, fittings or services so cannot verify that they are in working order or fit for the purpose. References to the properties tenure are based on information supplied by the seller. You are advised to check the availability of this property before travelling any distance to view. Every effort has been made to ensure these particulars are correct and not misleading but their accuracy is not guaranteed nor do they form part of any contract.