



Leamington Road, Eccles

Manchester



In Excess of £300,000

Leamington Road

Eccles, Manchester

Take a look at this EXTENDED THREE BEDROOM SEMI-DETACHED HOME! Benefitting from a bay fronted lounge diner, contemporary kitchen complete with a centre island, and a single story wrap around extension

Council Tax band: B

Tenure: Leasehold

- Spacious three bedroom semi-detached family home!
- Located close to excellent schooling, good transport links and Monton Village
- Benefitting from a single story wrap around extension
- Contemporary fitted kitchen complete with a centre island
- Bay fronted lounge diner and separate conservatory
- Off-road parking to the front for multiple cars
- Modern three piece bathroom suite
- Well-presented throughout
- Perfect family home
- Early viewing is essential!



HILLS



Porch

3' 10" x 8' 9" (1.18m x 2.66m)

Entrance Hallway

8' 10" x 7' 10" (2.68m x 2.40m)

Lounge / Diner

23' 9" x 11' 1" (7.25m x 3.37m)

Kitchen

16' 1" x 14' 11" (4.90m x 4.55m)

Conservatory

13' 9" x 12' 6" (4.20m x 3.82m)

Landing

Bedroom One

12' 1" x 11' 1" (3.69m x 3.39m)

Bedroom Two

11' 9" x 8' 6" (3.58m x 2.60m)

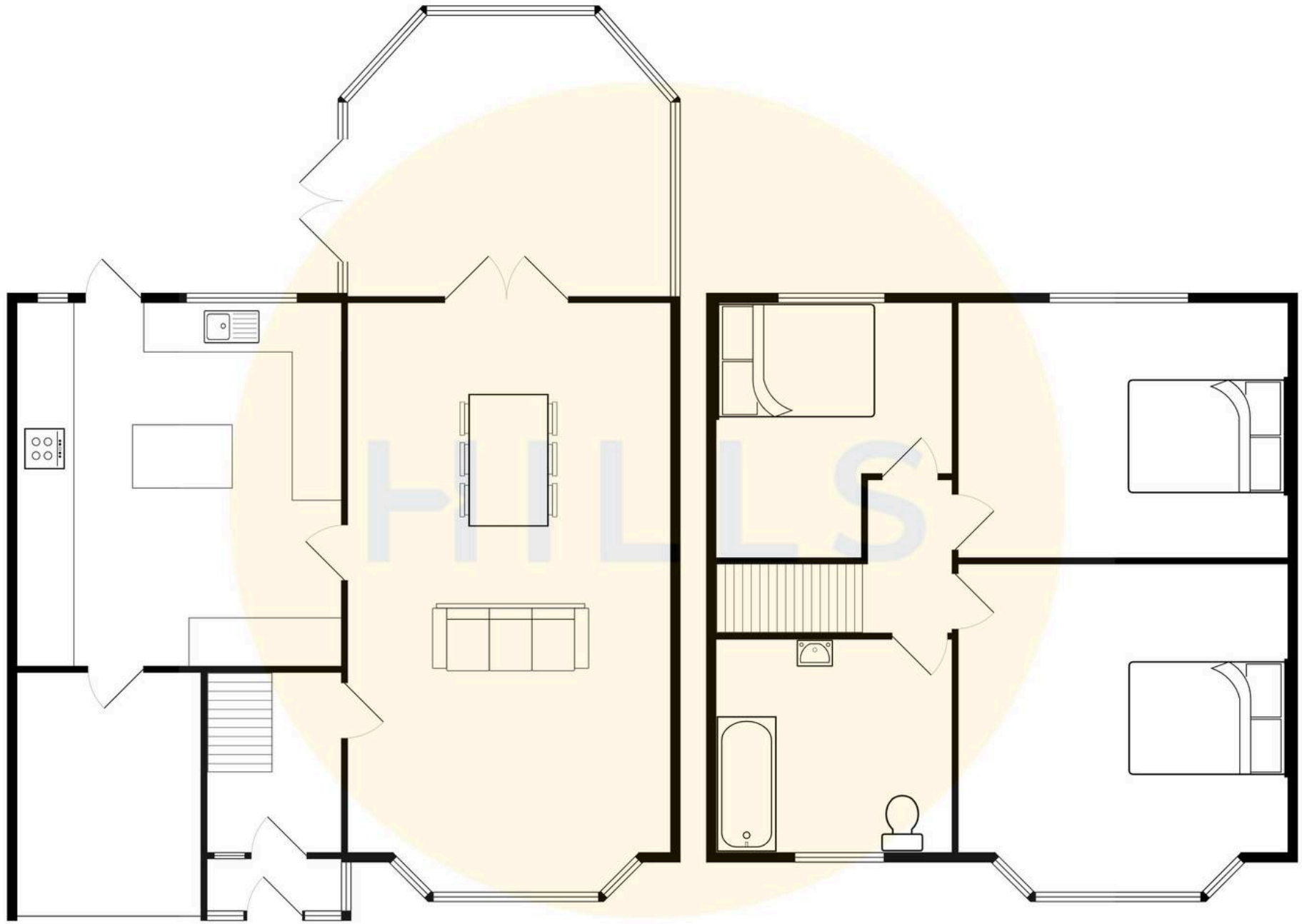
Bedroom Three

7' 10" x 7' 10" (2.40m x 2.40m)

Bathroom

6' 10" x 7' 9" (2.08m x 2.36m)







Hills | Salfords Estate Agent

Hills Residential, Sentinel House Albert Street – M30 0SS

0161 707 4900

sales@hills.agency

www.hills.agency/



By law, we are required to conduct anti-money laundering checks on all potential buyers and sellers. In line with HMRC guidelines, our trusted partner, Coadjute, will securely manage these checks on our behalf. A non-refundable fee of £45 + VAT per person will apply, and Coadjute will handle the payment. Once an offer is accepted, Coadjute will send a secure link for you to complete the biometric checks. These checks must be completed before we can send the memorandum of sale to all parties. PLEASE NOTE: The Agent has not tested any equipment, fixtures, fittings or services so cannot verify that they are in working order or fit for the purpose. References to the properties tenure are based on information supplied by the seller. You are advised to check the availability of this property before travelling any distance to view. Every effort has been made to ensure these particulars are correct and not misleading but their accuracy is not guaranteed nor do they form part of any contract.