



HILLS

28 Rigby Street, Salford

Salford

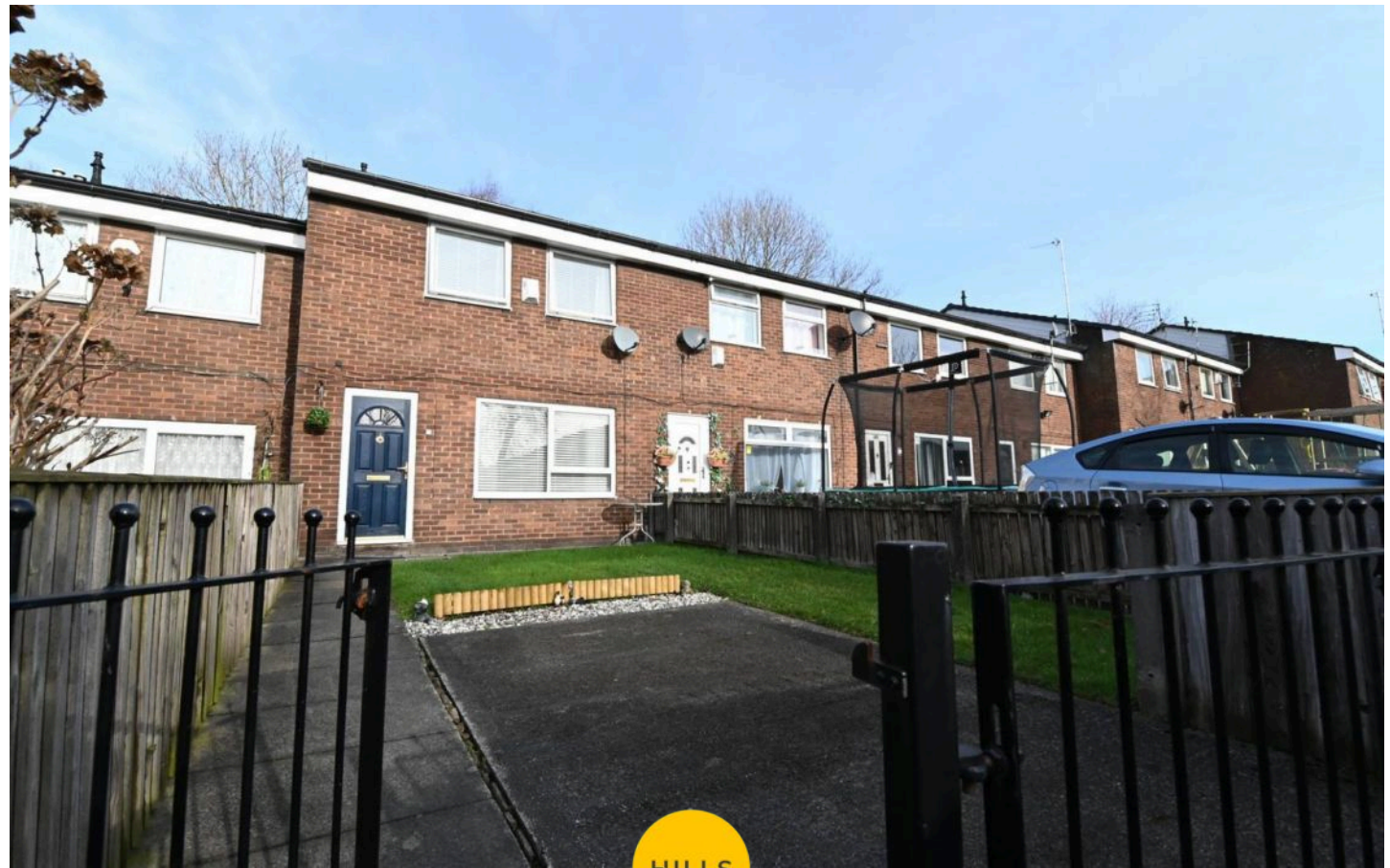
Offers in Region of £290,000

28 Rigby Street

Salford, Salford

Council Tax band: A

Tenure: Freehold



Lounge

16' 1" x 14' 9" (4.90m x 4.50m)

Hallway

10' 10" x 6' 7" (3.30m x 2.00m)

WC

4' 7" x 3' 7" (1.40m x 1.10m)

Kitchen / Diner

15' 9" x 10' 6" (4.80m x 3.20m)

Landing

11' 10" x 10' 2" (3.60m x 3.10m)

Bedroom One

15' 1" x 8' 10" (4.60m x 2.70m)

Bedroom Two

15' 1" x 6' 11" (4.60m x 2.10m)

Bedroom Three

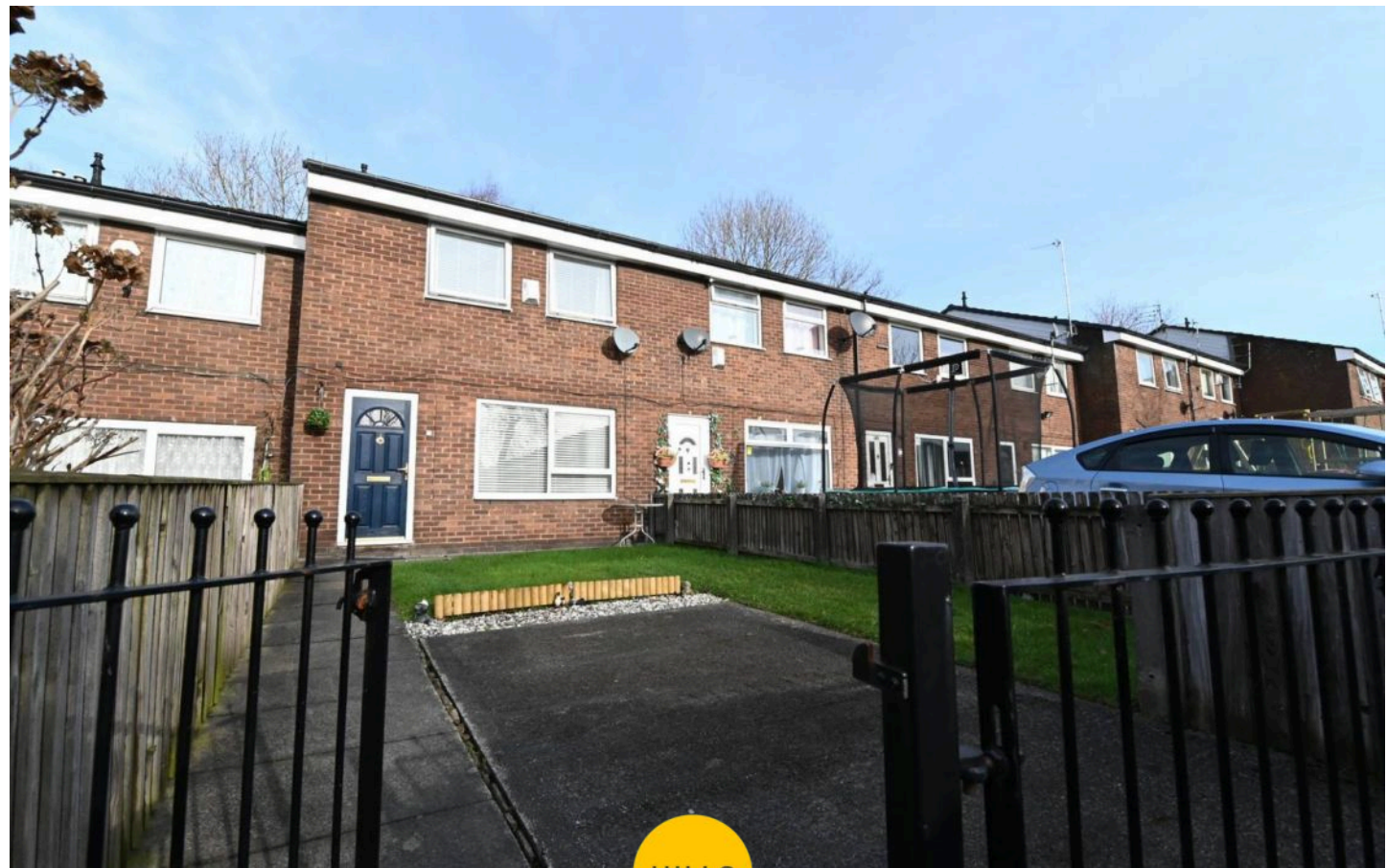
10' 10" x 6' 11" (3.30m x 2.10m)

Bedroom Four

8' 10" x 7' 10" (2.70m x 2.40m)

Bathroom

6' 3" x 5' 7" (1.90m x 1.70m)



Lounge

16' 1" x 14' 9" (4.90m x 4.50m)

Hallway

10' 10" x 6' 7" (3.30m x 2.00m)

WC

4' 7" x 3' 7" (1.40m x 1.10m)

Kitchen / Diner

15' 9" x 10' 6" (4.80m x 3.20m)

Landing

11' 10" x 10' 2" (3.60m x 3.10m)

Bedroom One

15' 1" x 8' 10" (4.60m x 2.70m)

Bedroom Two

15' 1" x 6' 11" (4.60m x 2.10m)

Bedroom Three

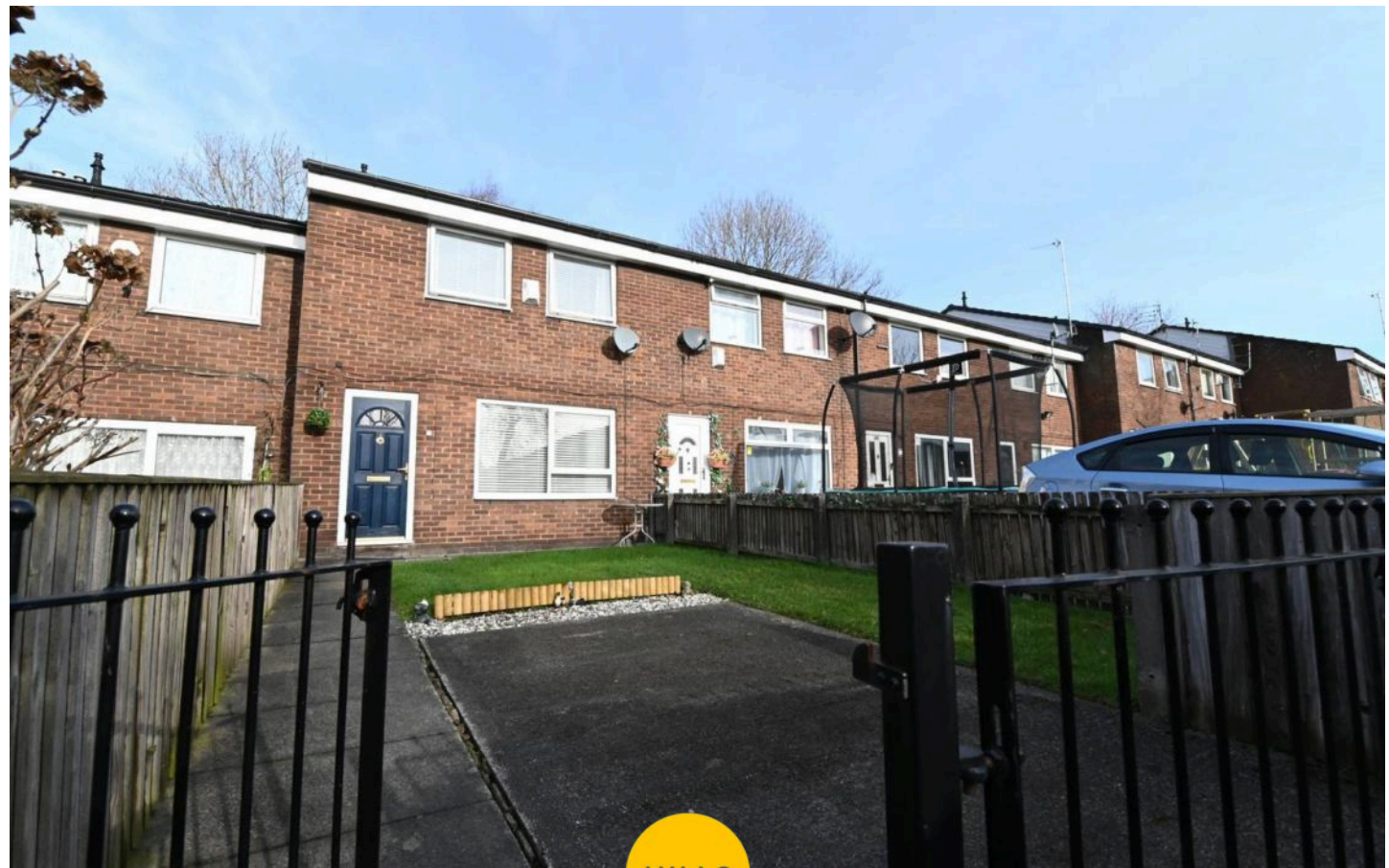
10' 10" x 6' 11" (3.30m x 2.10m)

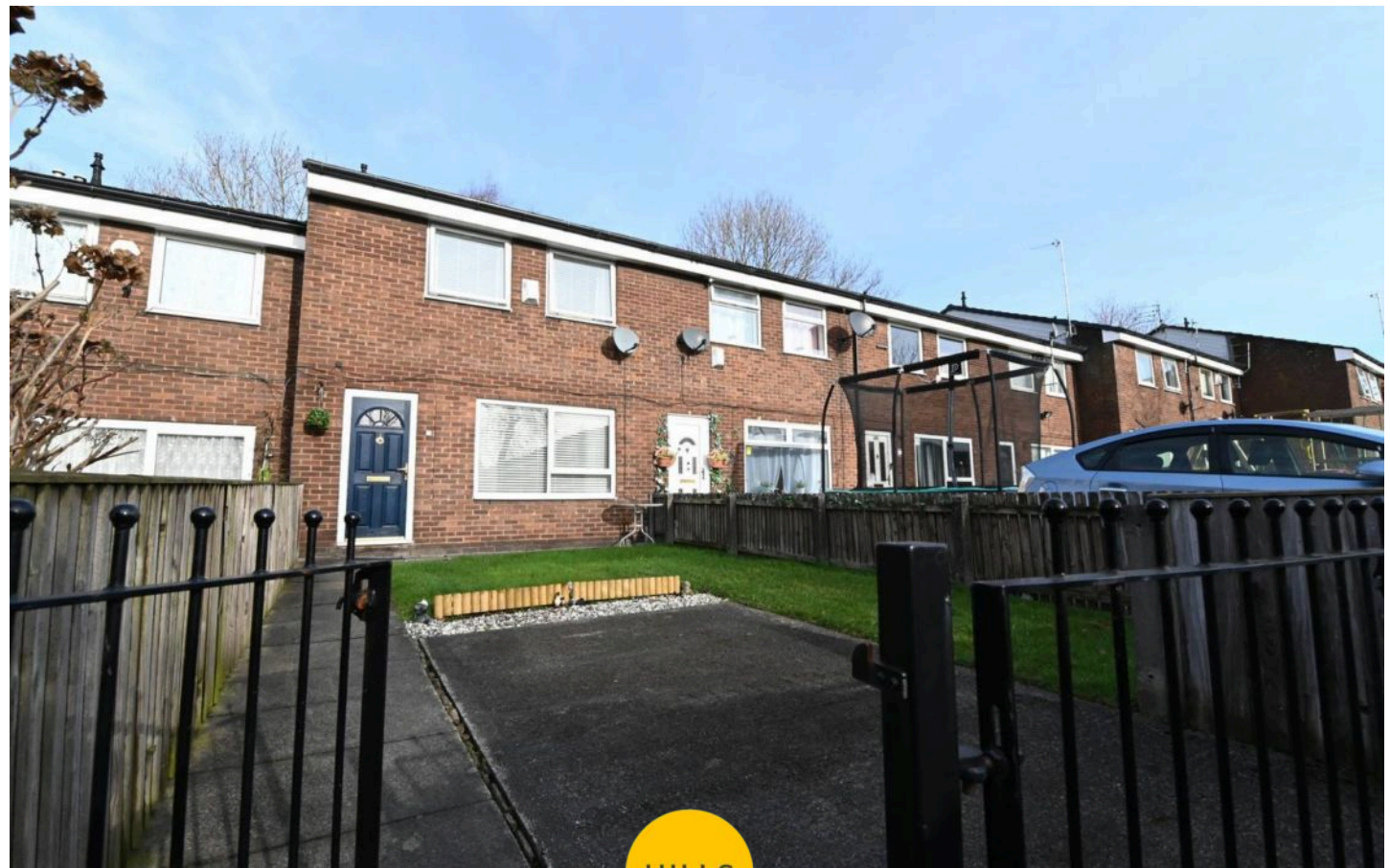
Bedroom Four

8' 10" x 7' 10" (2.70m x 2.40m)

Bathroom

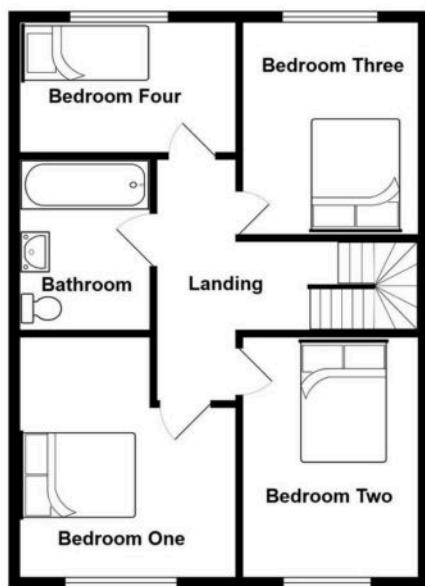
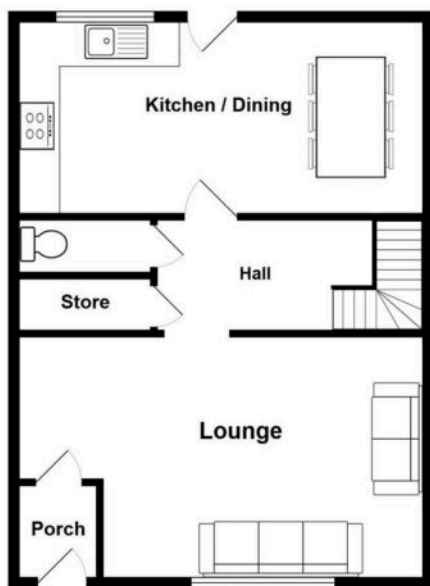
6' 3" x 5' 7" (1.90m x 1.70m)





HILLS





You can include any text here. The text can be modified upon generating your brochure.

