



Overlinks Drive

Salford

HILLS

In Excess of £240,000

Overlinks Drive

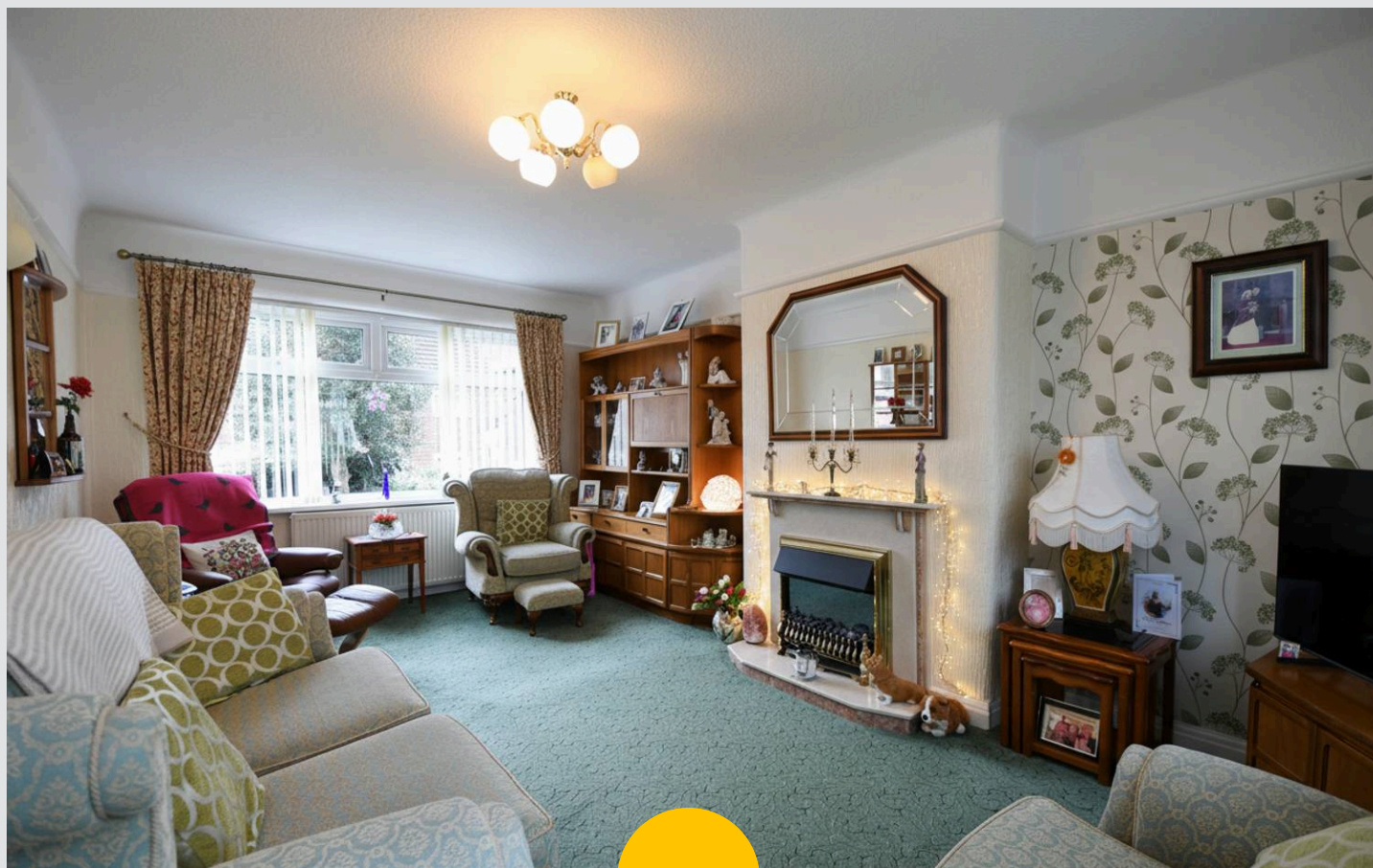
Salford

Spacious three bedroom semi-detached property coming to the market CHAIN FREE! Featuring a driveway to the front and beautiful low maintenance gardens to the front and rear!

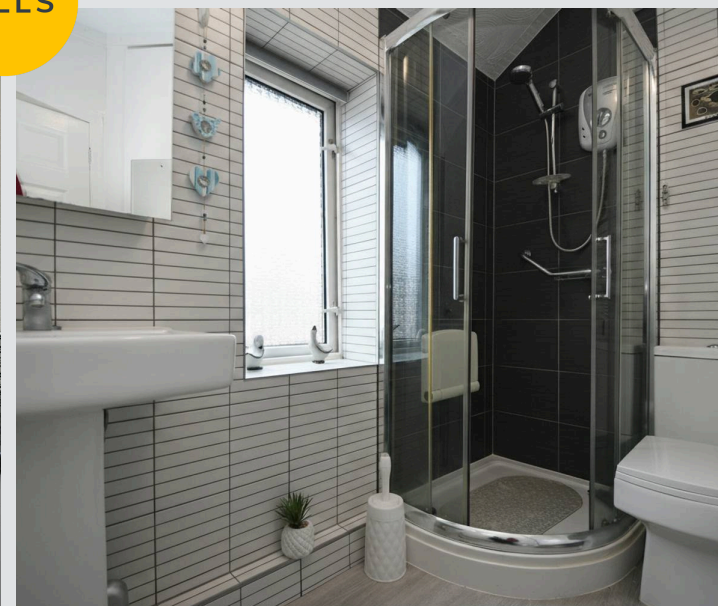
Council Tax band: B

Tenure: Freehold

- Spacious three bedroom semi-detached property coming to the market CHAIN FREE!
- Modern fitted extended kitchen diner
- Within walking distance of amenities, several well-kept parks, local schooling and Salford Royal Hospital
- Driveway to the front for off-road parking
- Spacious family lounge
- Three generous sized bedrooms
- Modern three-piece shower room
- Low maintenance front and rear gardens
- Within easy access of excellent transport links into Salford Quays, Media City and Manchester City Centre
- Perfect first time buy and a great opportunity to put your own stamp on a property!



HILLS



Entrance Hallway

7' 1" x 7' 9" (2.17m x 2.36m)

Lounge

11' 9" x 19' 2" (3.57m x 5.84m)

Kitchen

19' 5" x 8' 3" (5.93m x 2.51m)

Landing**Bedroom One**

11' 5" x 10' 1" (3.48m x 3.08m)

Bedroom Two

11' 5" x 8' 8" (3.47m x 2.65m)

Bedroom Three

8' 0" x 8' 0" (2.43m x 2.43m)

Bathroom

6' 2" x 7' 9" (1.88m x 2.35m)







Hills | Salfords Estate Agent

Hills Residential, Sentinel House Albert Street – M30 0SS

0161 707 4900

sales@hills.agency

www.hills.agency/



By law, we are required to conduct anti-money laundering checks on all potential buyers and sellers. In line with HMRC guidelines, our trusted partner, Coadjute, will securely manage these checks on our behalf. A non-refundable fee of £45 + VAT per person will apply, and Coadjute will handle the payment. Once an offer is accepted, Coadjute will send a secure link for you to complete the biometric checks. These checks must be completed before we can send the memorandum of sale to all parties. PLEASE NOTE: The Agent has not tested any equipment, fixtures, fittings or services so cannot verify that they are in working order or fit for the purpose. References to the properties tenure are based on information supplied by the seller. You are advised to check the availability of this property before travelling any distance to view. Every effort has been made to ensure these particulars are correct and not misleading but their accuracy is not guaranteed nor do they form part of any contract.