



Light Oaks Road

Salford



In Excess of £650,000



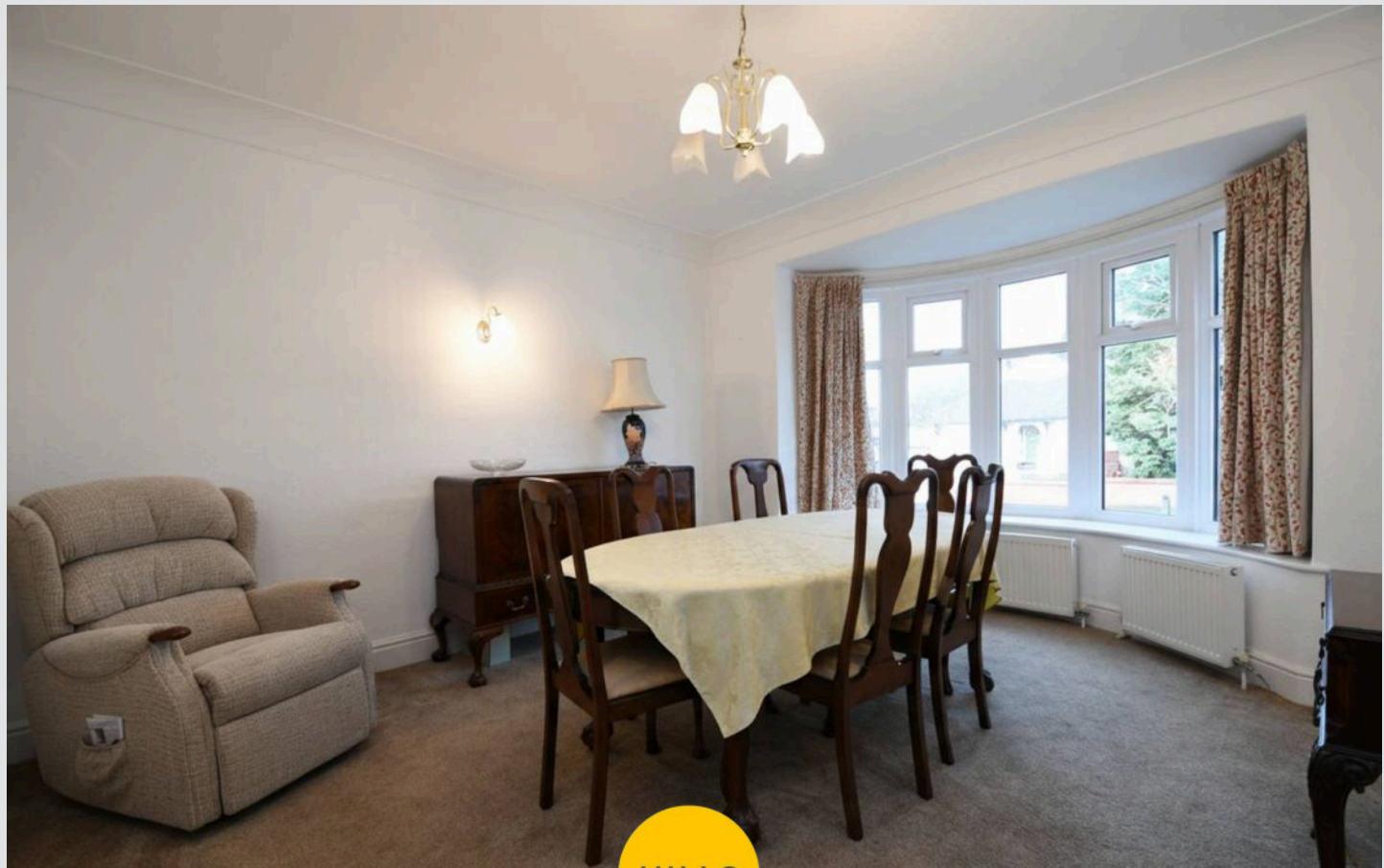
# Light Oaks Road

Salford

**\*\*NO VENDOR CHAIN – Prestigious Five bedroom Detached Property, Situated on a Generous Plot Within Walking Distance of Salford Royal Hospital!\*\***  
Council Tax band: D

Tenure: Leasehold

- Prestigious five bedroom detached property coming to the market CHAIN FREE!
- Within walking distance of Salford Royal Hospital
- Situated on a generous plot, with a driveway for several cars to the front and two garages
- Well presented garden to the rear with paving, laid-to-lawn grass and mature plants
- Two spacious, bay-fronted reception rooms and a conservatory
- Modern fitted kitchen
- Two modern three piece bathroom suites to the first floor, and a downstairs W.C.
- Five generous sized bedrooms
- Great Family Location, Close to Light Oaks Primary School and Multiple Parks
- Close to Excellent Transport Links into Salford Quays, Media City and Manchester City Centre



HILLS





### Entrance Hallway

### Reception Room One

12' 10" x 12' 8" (3.92m x 3.85m)

### Reception Room Two

13' 0" x 12' 11" (3.96m x 3.94m)

### Kitchen

20' 5" x 9' 6" (6.23m x 2.89m)

### Conservatory

18' 0" x 11' 10" (5.48m x 3.61m)

### Downstairs W.C.

4' 9" x 3' 1" (1.46m x 0.95m)

### Landing

### Bedroom One

16' 0" x 12' 10" (4.87m x 3.90m)

### Bedroom Two

15' 5" x 13' 0" (4.70m x 3.95m)

### Bedroom Three

10' 10" x 9' 11" (3.29m x 3.02m)

### Bedroom Four

10' 1" x 10' 0" (3.08m x 3.04m)

### Bedroom Five

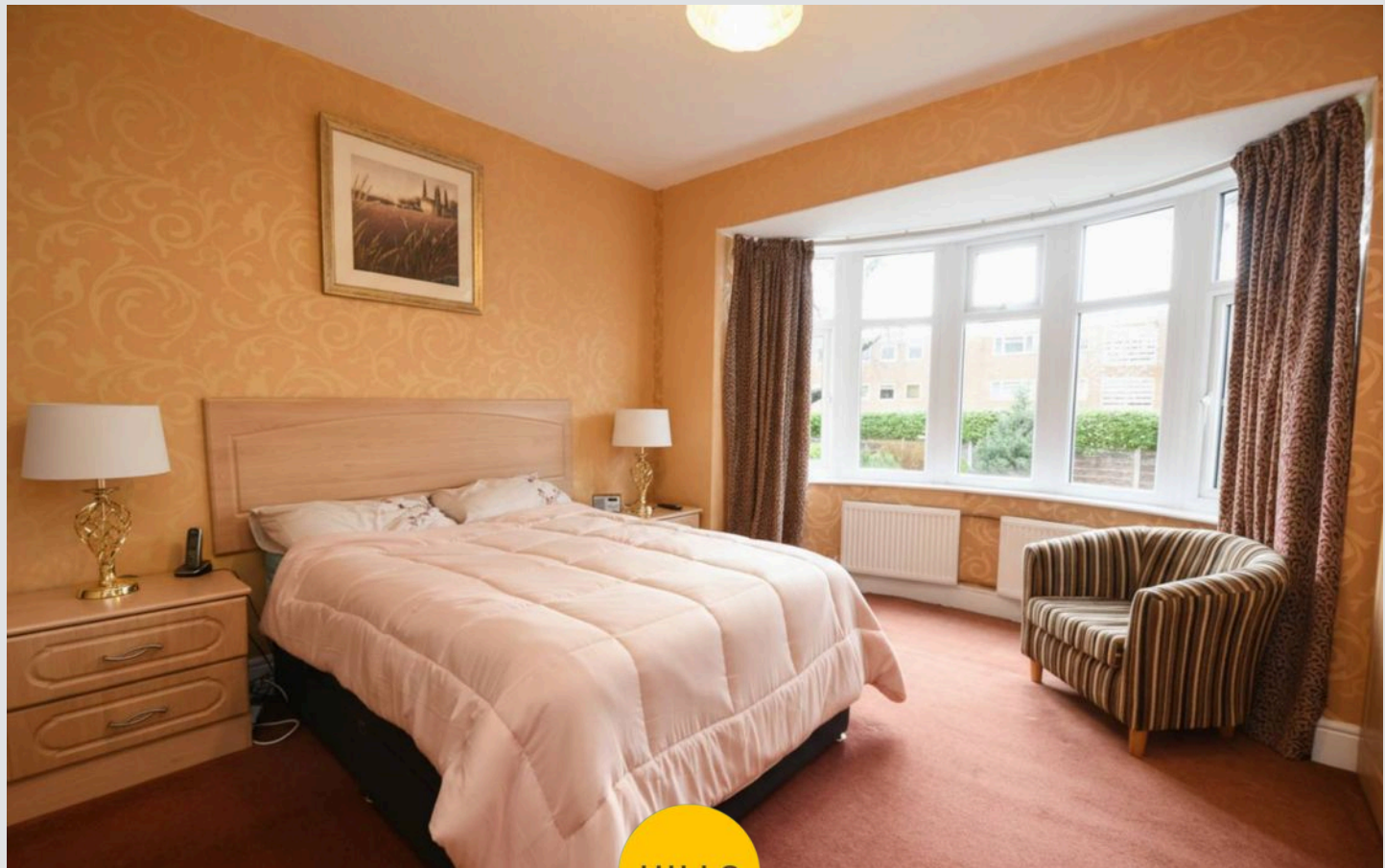
9' 1" x 8' 10" (2.77m x 2.70m)

### Bathroom One

9' 7" x 8' 10" (2.91m x 2.68m)

### Bathroom Two

6' 5" x 5' 3" (1.96m x 1.59m)



HILLS

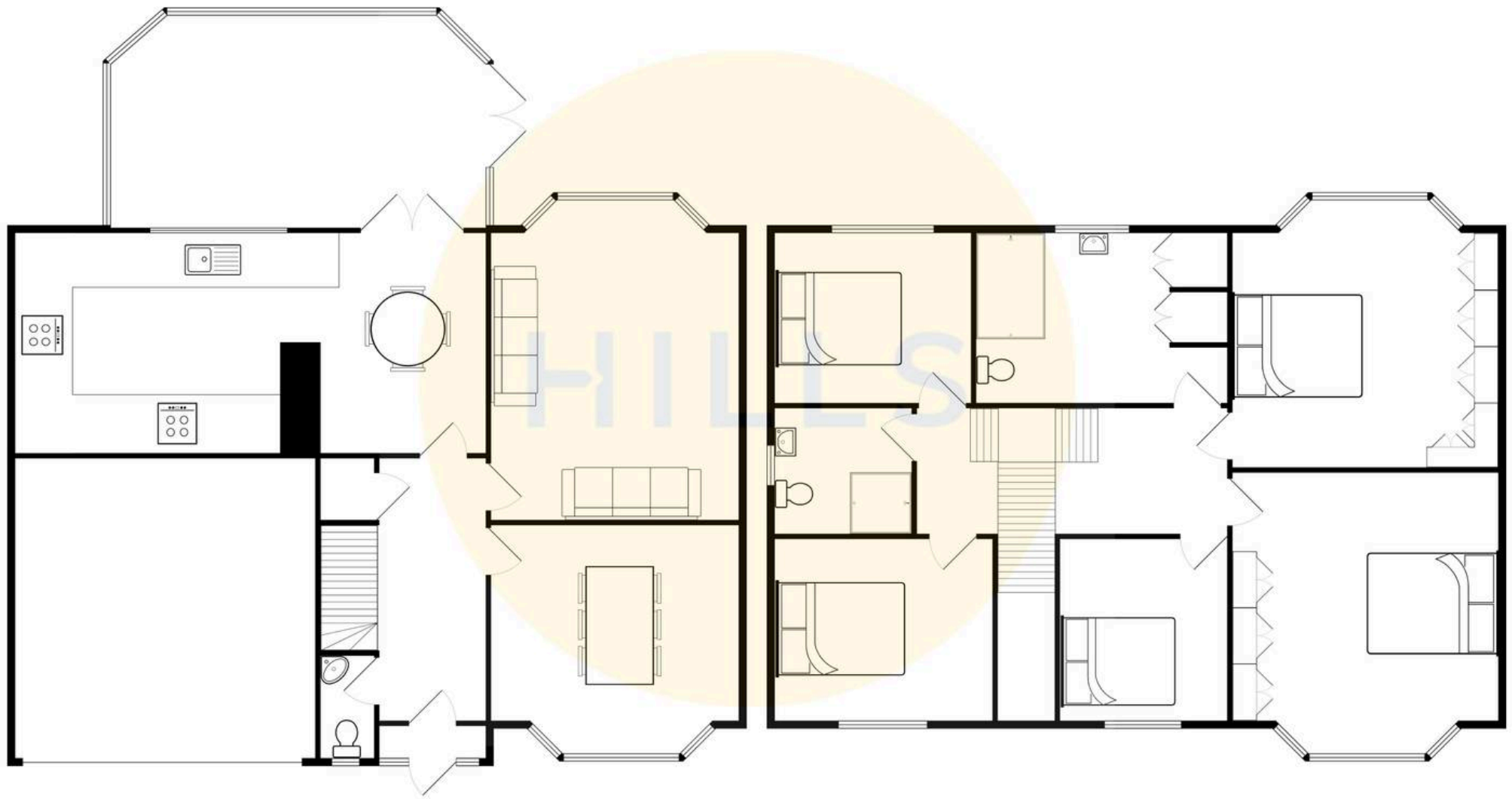






HILLS









## Hills | Salfords Estate Agent

Hills Residential, Sentinel House Albert Street – M30 0SS

0161 707 4900

[sales@hills.agency](mailto:sales@hills.agency)

[www.hills.agency/](http://www.hills.agency/)



By law, we are required to conduct anti-money laundering checks on all potential buyers and sellers. In line with HMRC guidelines, our trusted partner, Coadjute, will securely manage these checks on our behalf. A non-refundable fee of £45 + VAT per person will apply, and Coadjute will handle the payment. Once an offer is accepted, Coadjute will send a secure link for you to complete the biometric checks. These checks must be completed before we can send the memorandum of sale to all parties. PLEASE NOTE: The Agent has not tested any equipment, fixtures, fittings or services so cannot verify that they are in working order or fit for the purpose. References to the properties tenure are based on information supplied by the seller. You are advised to check the availability of this property before travelling any distance to view. Every effort has been made to ensure these particulars are correct and not misleading but their accuracy is not guaranteed nor do they form part of any contract.