



Bradburn Road, Irlam

Manchester

HILLS

In Excess of £220,000

Bradburn Road

Irlam, Manchester

Beautifully presented two-bedroom home on a quiet cul de sac with modern kitchen, spacious bedrooms, four-piece bathroom, off-road parking, garden, and excellent transport links.

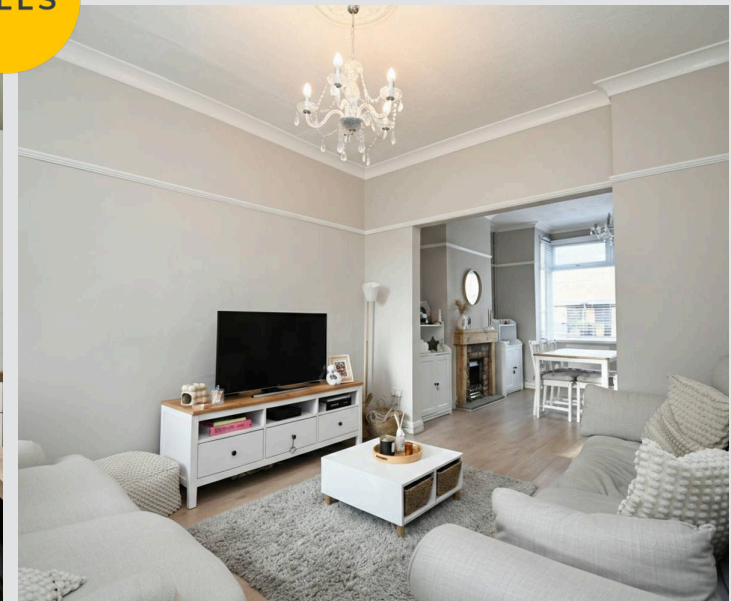
Council Tax band: B

Tenure: Freehold

- Fabulous First Time Buy Situated on a Quiet Cul De Sac
- Bay Fronted Reception Room Seamlessly Flowing into the Sitting Area
- Fitted Kitchen with Integrated Appliances
- Spacious Four Piece Bathroom Suite
- Two Double Bedrooms
- Gated Off Road Parking
- Lovely Private Rear Garden Benefitting From the Sun
- Surrounded by Excellent Amenities and Well Served by Brilliant Transport Links



HILLS



Entrance Hallway

Reception Room One

11' 0" x 10' 2" (3.35m x 3.10m)

Reception Room Two

11' 6" x 11' 0" (3.51m x 3.35m)

Kitchen

10' 2" x 7' 8" (3.10m x 2.34m)

Landing

Bedroom One

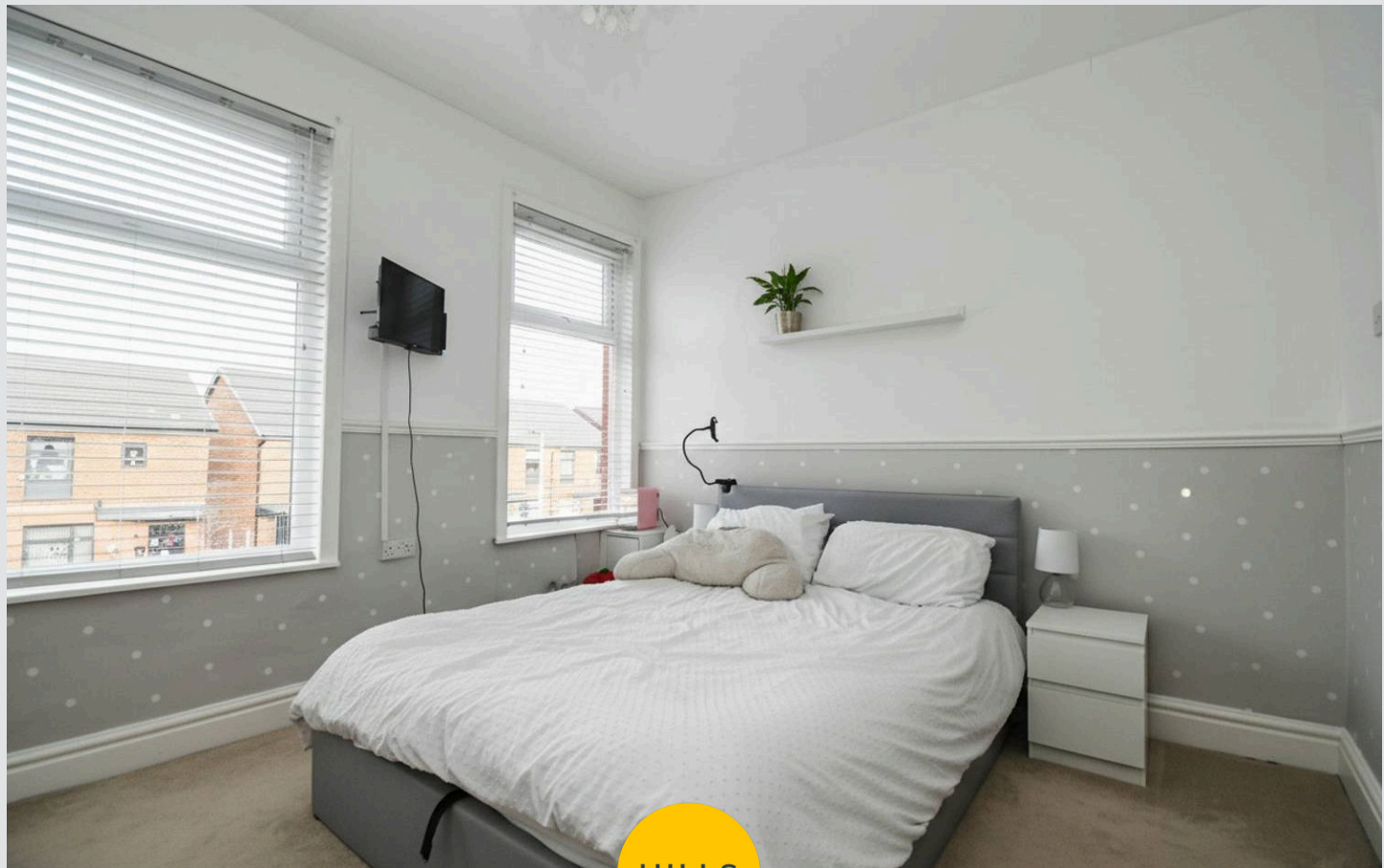
12' 5" x 10' 9" (3.79m x 3.28m)

Bedroom Two

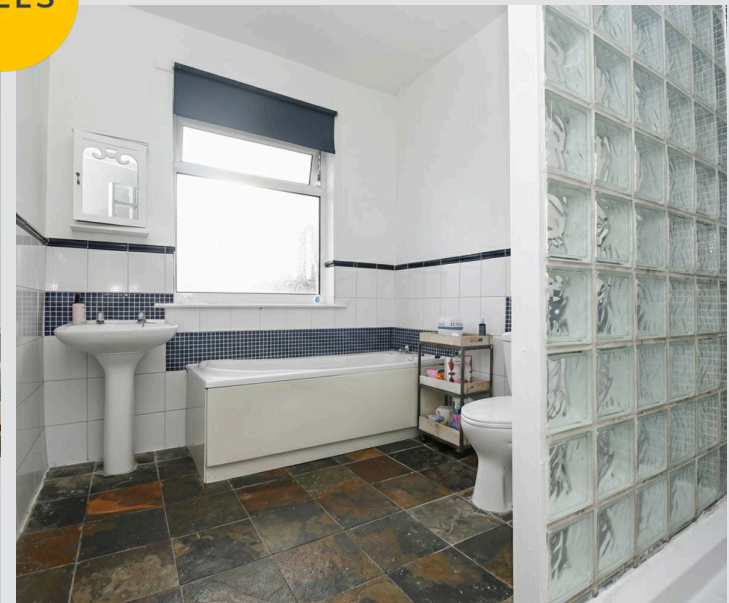
12' 0" x 8' 3" (3.66m x 2.52m)

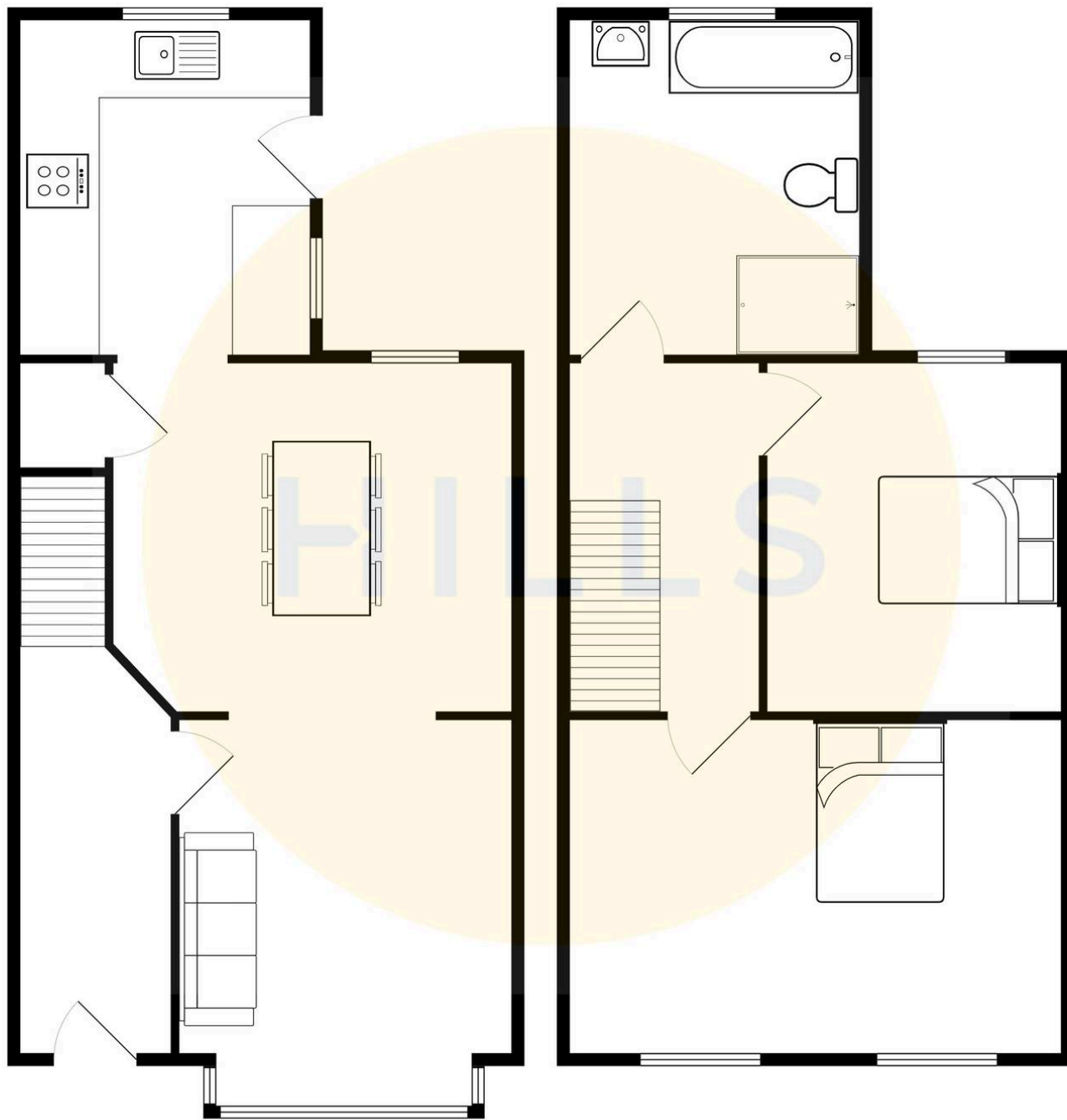
Bathroom

10' 1" x 7' 9" (3.07m x 2.36m)



HILLS







Hills | Salfords Estate Agent

Hills Residential, Sentinel House Albert Street – M30 0SS

0161 707 4900

sales@hills.agency

www.hills.agency/



By law, we are required to conduct anti-money laundering checks on all potential buyers and sellers. In line with HMRC guidelines, our trusted partner, Coadjute, will securely manage these checks on our behalf. A non-refundable fee of £45 + VAT per person will apply, and Coadjute will handle the payment. Once an offer is accepted, Coadjute will send a secure link for you to complete the biometric checks. These checks must be completed before we can send the memorandum of sale to all parties. PLEASE NOTE: The Agent has not tested any equipment, fixtures, fittings or services so cannot verify that they are in working order or fit for the purpose. References to the properties tenure are based on information supplied by the seller. You are advised to check the availability of this property before travelling any distance to view. Every effort has been made to ensure these particulars are correct and not misleading but their accuracy is not guaranteed nor do they form part of any contract.