



Tyersall Close, Eccles

Manchester

HILLS

In Excess of **£425,000**

Tyersall Close

Eccles, Manchester

Presenting a stunning three bedroom detached family home located in the desirable Ellesmere Park Area and benefitting from a double story and single story extension to the rear!

Council Tax band: D

Tenure: Freehold

- Stunning, Three Bedroom Detached Property Located in the desirable Ellesmere Park Area
- Double story and single story extended to the rear
- Off-road parking and a detached garage, currently being used as a gym
- Spacious bay fronted lounge
- Contemporary fitted kitchen diner complete with a breakfast bar and patio doors
- Three generous sized bedrooms
- Modern three-piece bathroom suite, en-suite and downstairs W.C.
- Low maintenance rear garden complete with paving and laid-to-lawn grass
- Ideal First Time Buy, Family Home or Downsize
- Surrounded by Excellent Amenities, Brilliant Transport Links and Located just a Short Walk from Monton Village & Salford Royal Hospital



HILLS



Entrance Hallway

7' 5" x 4' 3" (2.26m x 1.29m)

Lounge

17' 4" x 14' 8" (5.28m x 4.47m)

Kitchen Diner

18' 1" x 17' 0" (5.51m x 5.19m)

Office / Reception Room

8' 9" x 9' 0" (2.66m x 2.74m)

Downstairs W.C.

3' 6" x 5' 2" (1.06m x 1.57m)

Landing**Bedroom One**

10' 10" x 18' 5" (3.31m x 5.61m)

En suite

3' 7" x 7' 11" (1.09m x 2.42m)

Bedroom Two

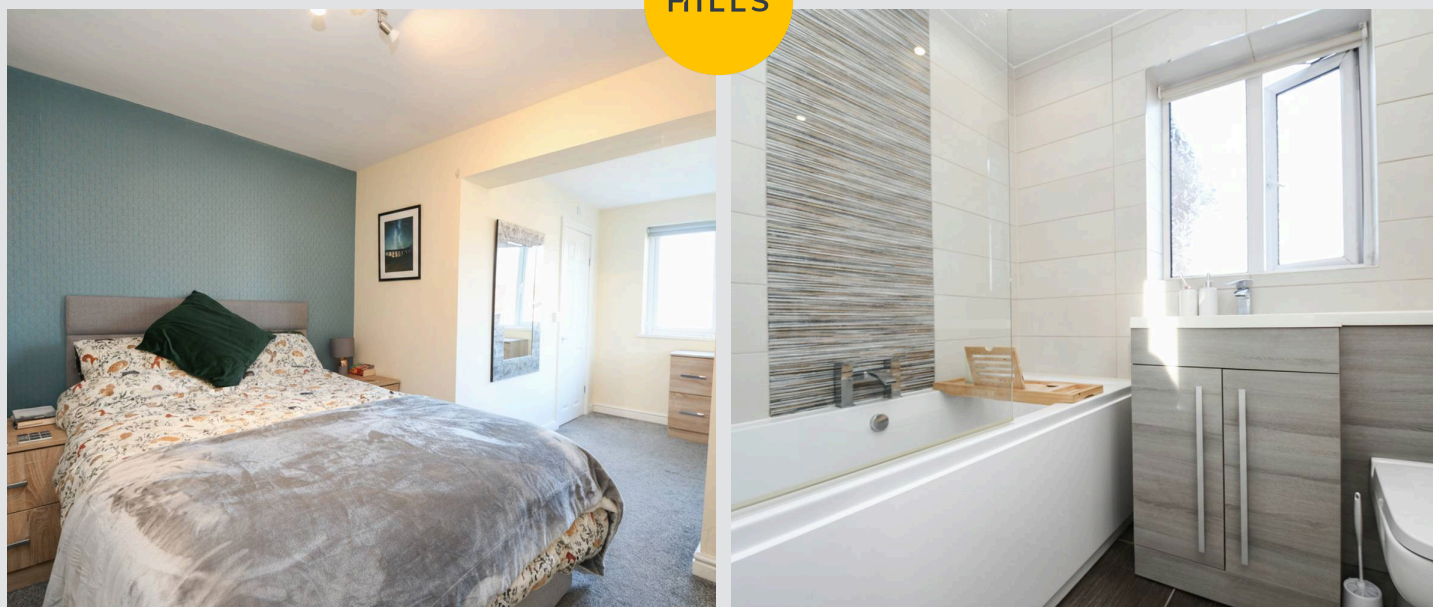
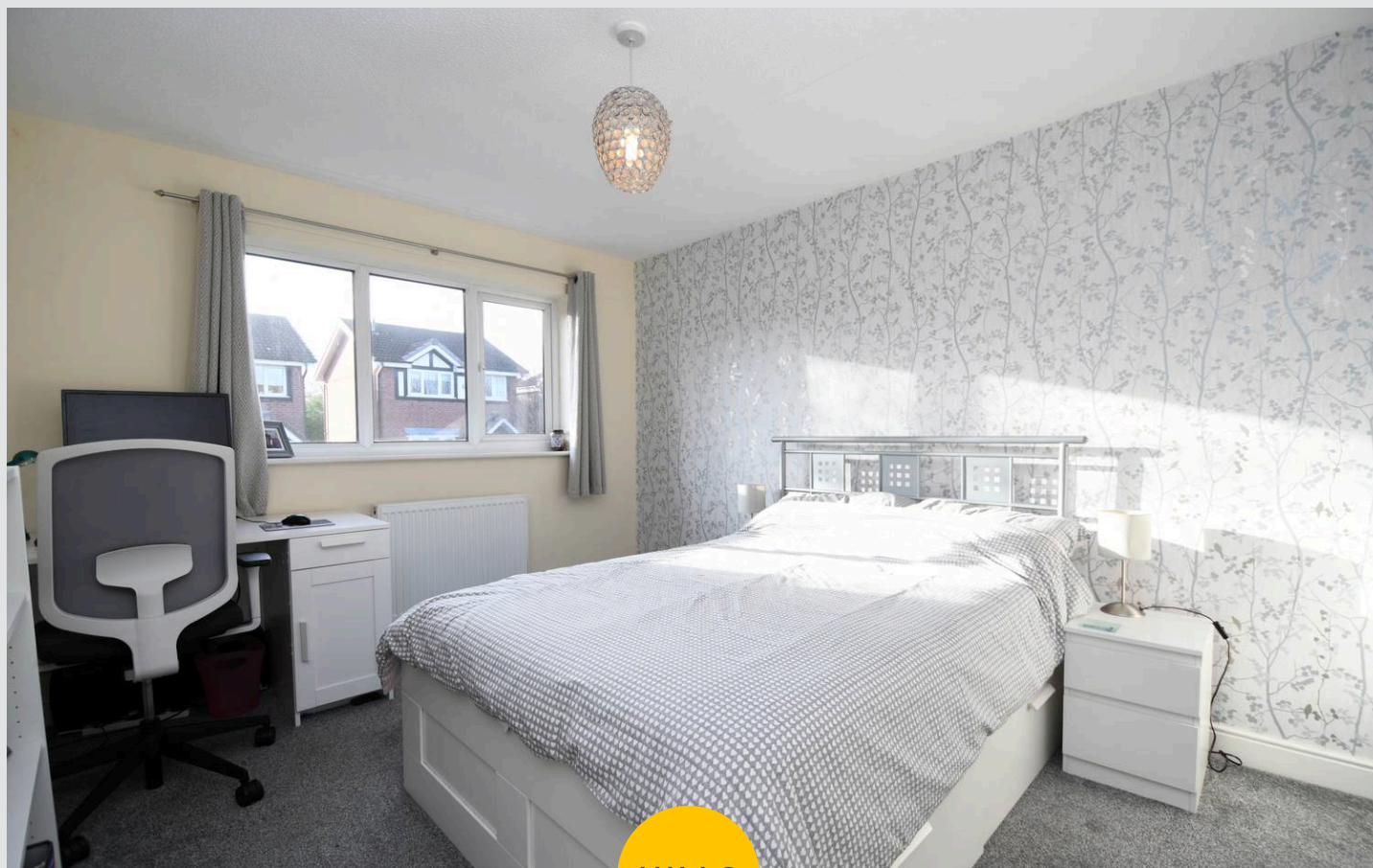
10' 9" x 13' 1" (3.28m x 4.00m)

Bedroom Three

10' 8" x 6' 11" (3.26m x 2.10m)

Bathroom

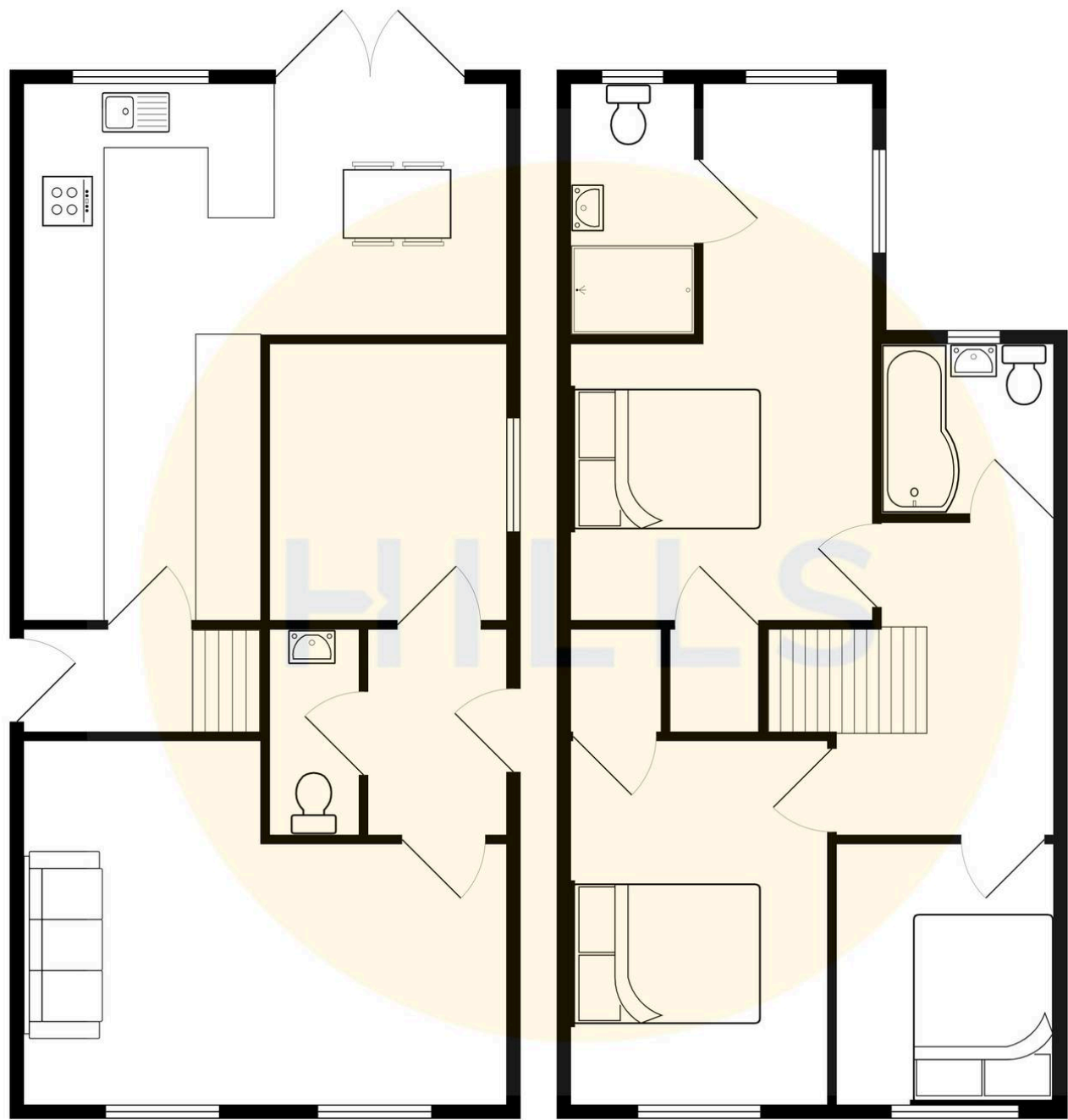
7' 1" x 6' 6" (2.15m x 1.99m)





HILLS







Hills | Salfords Estate Agent

Hills Residential, Sentinel House Albert Street – M30 0SS

0161 707 4900

sales@hills.agency

www.hills.agency/



By law, we are required to conduct anti-money laundering checks on all potential buyers and sellers. In line with HMRC guidelines, our trusted partner, Coadjute, will securely manage these checks on our behalf. A non-refundable fee of £45 + VAT per person will apply, and Coadjute will handle the payment. Once an offer is accepted, Coadjute will send a secure link for you to complete the biometric checks. These checks must be completed before we can send the memorandum of sale to all parties. PLEASE NOTE: The Agent has not tested any equipment, fixtures, fittings or services so cannot verify that they are in working order or fit for the purpose. References to the properties tenure are based on information supplied by the seller. You are advised to check the availability of this property before travelling any distance to view. Every effort has been made to ensure these particulars are correct and not misleading but their accuracy is not guaranteed nor do they form part of any contract.