



HILLS

16 Stoneacre Court, Swinton

Manchester

Guide Price £180,000

# 16 Stoneacre Court

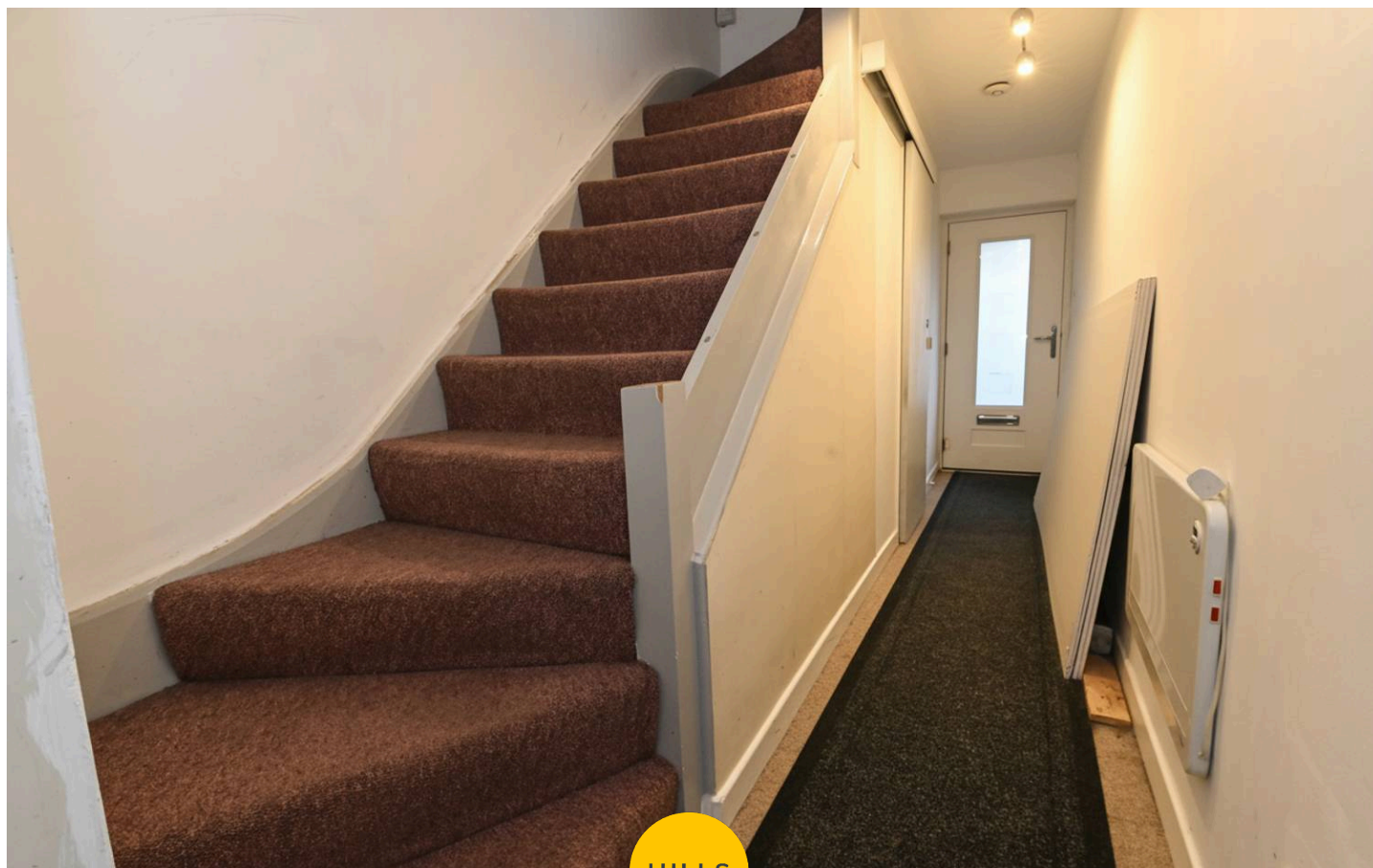
Swinton, Manchester

\* OFFERED FOR SALE BY HILLS PROPERTY AUCTIONS \*  
CHAIN FREE \* FANTASTIC FAMILY HOME \* Spread over THREE FLOORS and offering an ABUNDANCE OF SPACE, this FABULOUS HOME features 4 GENEROUS BEDROOMS, a SPACIOUS LOUNGE & DINING AREA, a FAMILY BATHROOM & DOWNSTAIRS W.C, along with a LARGE ENTRANCE HALLWAY, and a FITTED KITCHEN & SEPARATE UTILITY AREA. The property also benefits from AN INTEGRATED GARAGE & OFF-ROAD PARKING as well as a LOW MAINTENANCE GARDEN to the rear. IDEALLY LOCATED IN CENTRAL SWINTON within WALKING DISTANCE of many local amenities including shops, parks, schools, and excellent transport links, COULD THIS BE THE PERFECT HOME FOR YOUR FAMILY? CALL US NOW TO BOOK A VIEWING!!

Council Tax band: C

Tenure: Leasehold

- CHAIN-FREE
- FOUR SPACIOUS BEDROOMS
- DRIVEWAY & INTEGRATED GARAGE
- CENTRAL SWINTON LOCATION
- FAMILY BATHROOM & DOWNSTAIRS W.C.
- FITTED KITCHEN & SEPARATE UTILITY ROOM
- SPACIOUS FAMILY HOME SPREAD OVER THREE FLOORS
- CLOSE TO MANY LOCAL AMENITIES, SCHOOLS, PARKS & GREAT TRANSPORT LINKS
- \* OFFERED FOR SALE BY HILLS PROPERTY AUCTIONS - AUCTION END DATE - 2pm THURSDAY 19th OF MARCH - CALL NOW TO BID! \*



HILLS



### First Floor Landing

Dimensions: 7' 6" x 6' 0" (2.28m x 1.83m).

### Bedroom Four

Dimensions: 11' 6" x 8' 6" (3.50m x 2.59m).

### Bedroom Three

Dimensions: 11' 3" x 6' 0" (3.43m x 1.83m).

### Family Bathroom

Dimensions: 6' 5" x 5' 9" (1.95m x 1.75m).

### Bedroom One

Dimensions: 14' 7" x 8' 5" (4.44m x 2.56m).

### Entrance Hall

Dimensions: 21' 1" x 2' 8" (6.42m x 0.81m).

### Lounge

Dimensions: 18' 5" x 14' 9" (5.61m x 4.49m).

### Kitchen

Dimensions: 14' 8" x 10' 0" (4.47m x 3.05m).

### Bedroom Two

Dimensions: 11' 4" x 8' 5" (3.45m x 2.56m).

### Utility Room

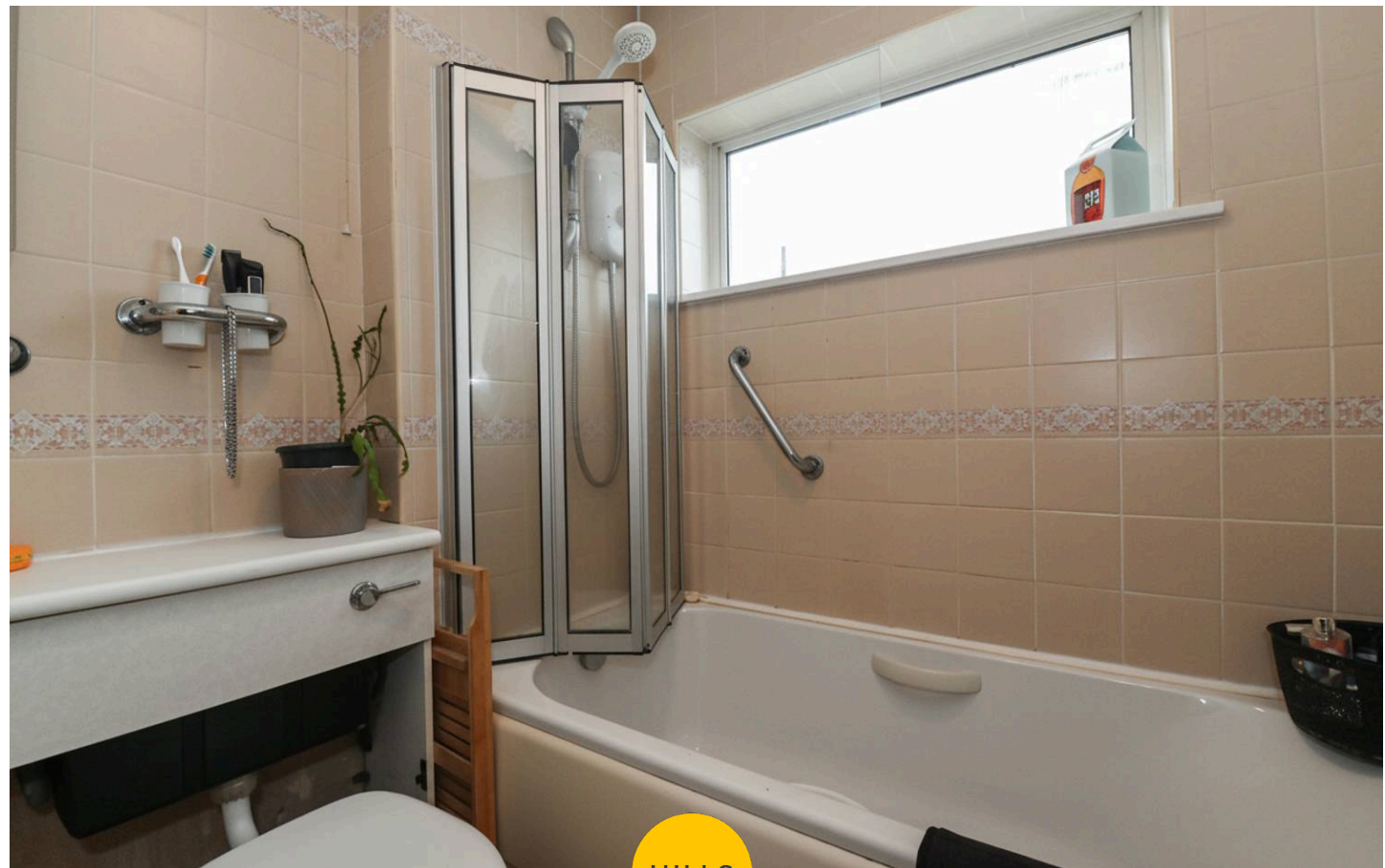
Dimensions: 7' 6" x 5' 8" (2.28m x 1.73m).

### W.C.

Dimensions: 12' 9" x 2' 5" (3.88m x 0.74m).

### Externally

The property offers a low maintenance rear paved garden with bushes to the left side. to the front there is an integral garage, driveway and an external tap.



HILLS



**First Floor Landing**

Dimensions: 7' 6" x 6' 0" (2.28m x 1.83m).

**Bedroom Four**

Dimensions: 11' 6" x 8' 6" (3.50m x 2.59m).

**Bedroom Three**

Dimensions: 11' 3" x 6' 0" (3.43m x 1.83m).

**Family Bathroom**

Dimensions: 6' 5" x 5' 9" (1.95m x 1.75m).

**Bedroom One**

Dimensions: 14' 7" x 8' 5" (4.44m x 2.56m).

**Entrance Hall**

Dimensions: 21' 1" x 2' 8" (6.42m x 0.81m).

**Lounge**

Dimensions: 18' 5" x 14' 9" (5.61m x 4.49m).

**Kitchen**

Dimensions: 14' 8" x 10' 0" (4.47m x 3.05m).

**Bedroom Two**

Dimensions: 11' 4" x 8' 5" (3.45m x 2.56m).

**Utility Room**

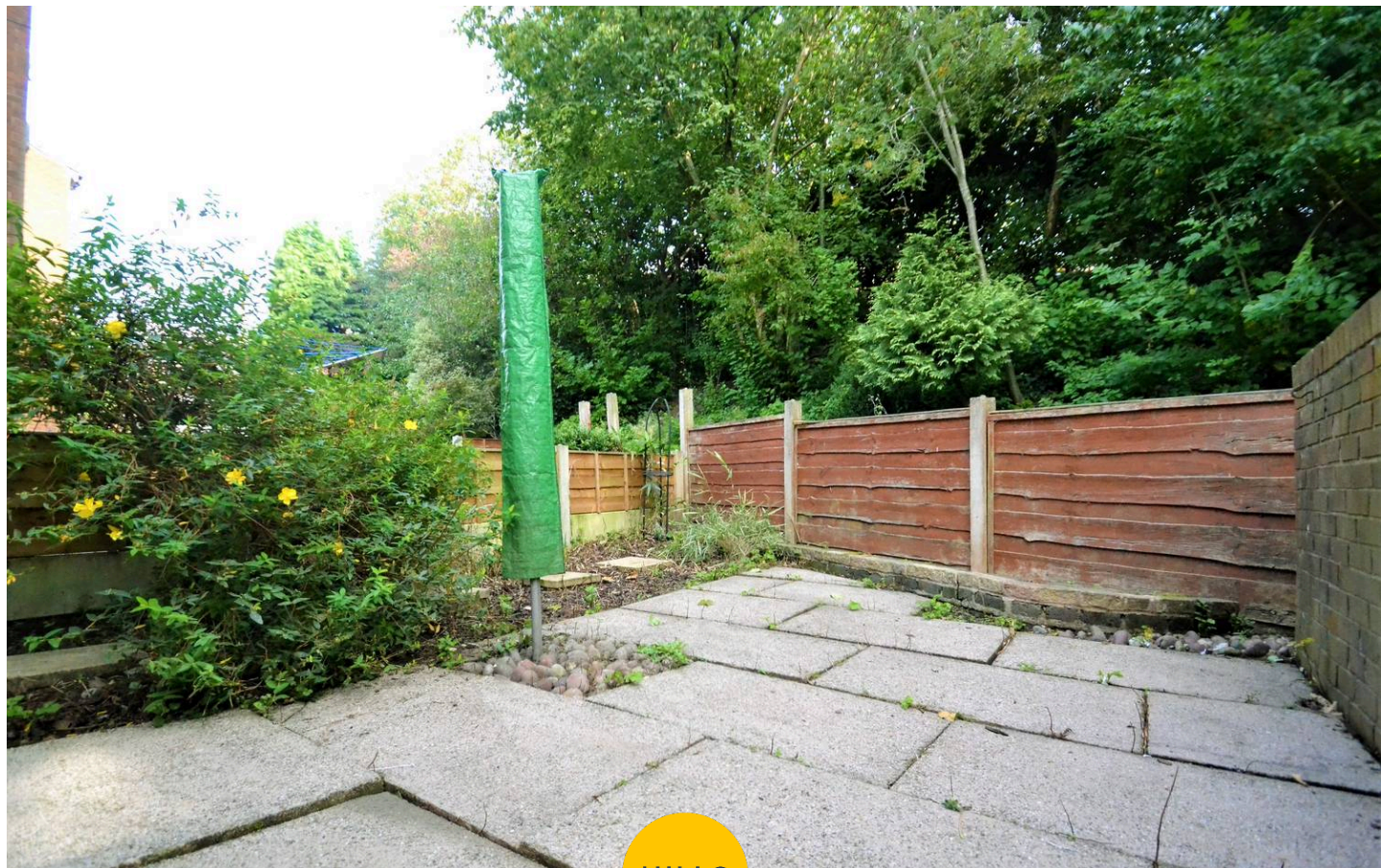
Dimensions: 7' 6" x 5' 8" (2.28m x 1.73m).

**W.C.**

Dimensions: 12' 9" x 2' 5" (3.88m x 0.74m).

**Externally**

The property offers a low maintenance rear paved garden with bushes to the left side. to the front there is an integral garage, driveway and an external tap.



**GARDEN**

A driveway providing off-road parking to the front. A low maintenance garden to the rear.

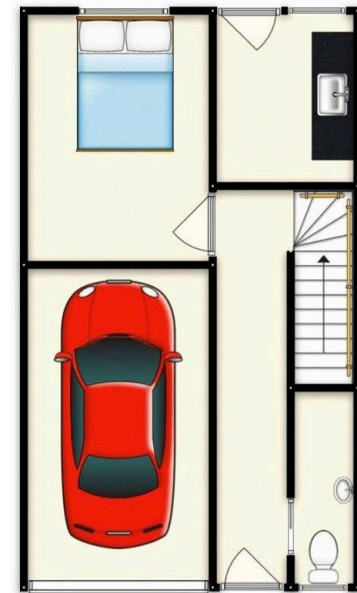
**GARAGE**

Double Garage

An integrated garage & driveway to the front.



HILLS





HILLS

You can include any text here. The text can be modified upon generating your brochure.

