



Schofield Road, Eccles

Manchester



Offers Over £280,000

Schofield Road

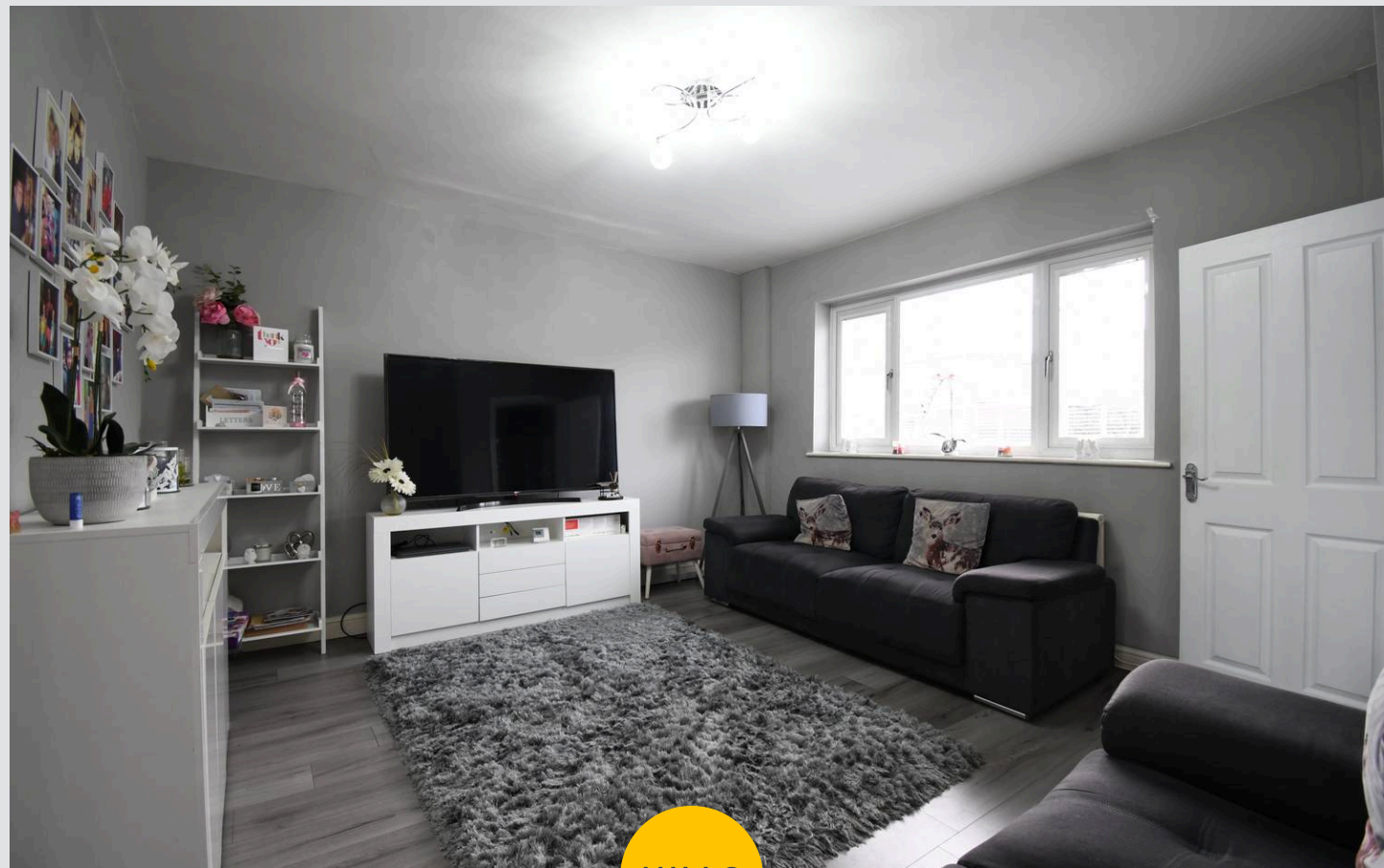
Eccles, Manchester

Beautifully maintained three bed semi-detached home with modern kitchen, utility, guest W.C., master with wardrobes, off-road parking, garage, near amenities, schools, and transport links.

Council Tax band: A

Tenure: Freehold

- Perfect First Time Buy or Family Home
- Spacious Family Lounge
- Sleek Fitted Kitchen, Separate Utility and Guest W.C.
- Three Generously Sized Bedrooms, Master with Fitted Wardrobes
- Three Piece Family Bathroom
- Off Road Parking
- Sizable Rear Garden that Benefits from the Sun and Detached Garage
- Located Close to Excellent Local Amenities and Fantastic Transport Links



HILLS

Entrance Hallway

Lounge

17' 7" x 13' 0" (5.35m x 3.97m)

Kitchen / Diner

14' 9" x 9' 4" (4.50m x 2.84m)

Utility Room

5' 8" x 4' 5" (1.72m x 1.35m)

Downstairs W.C.

Landing

Bedroom One

13' 1" x 9' 6" (3.99m x 2.89m)

Bedroom Two

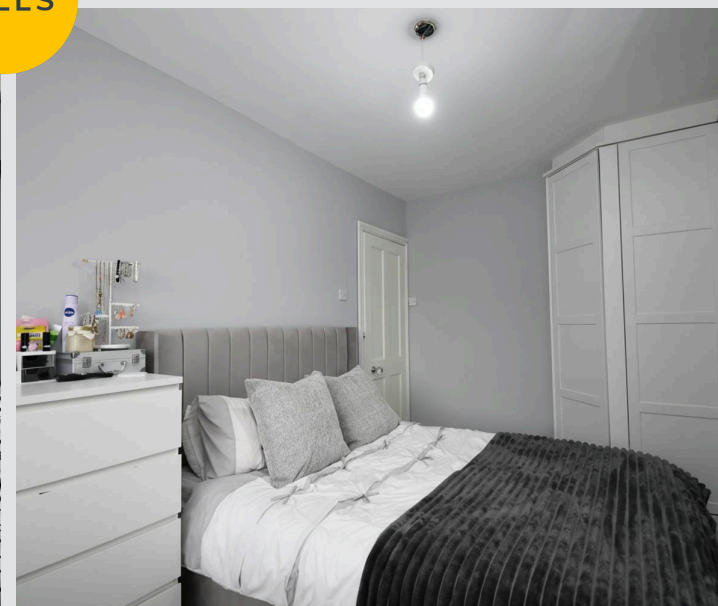
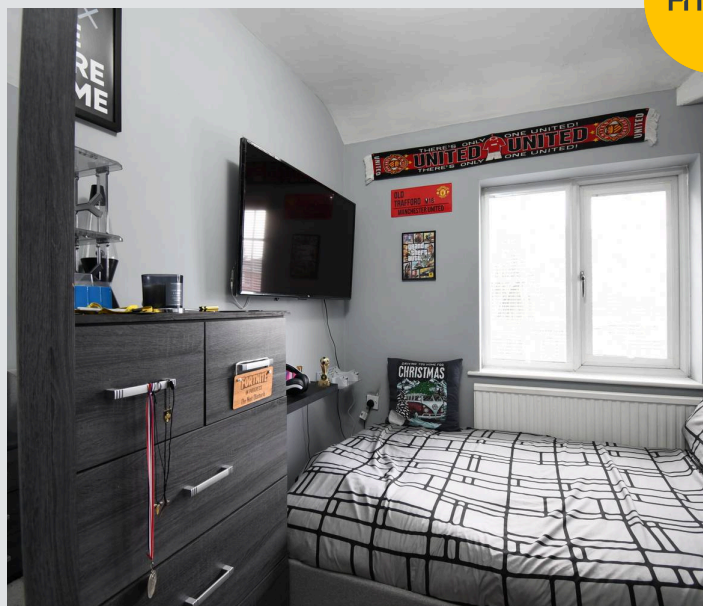
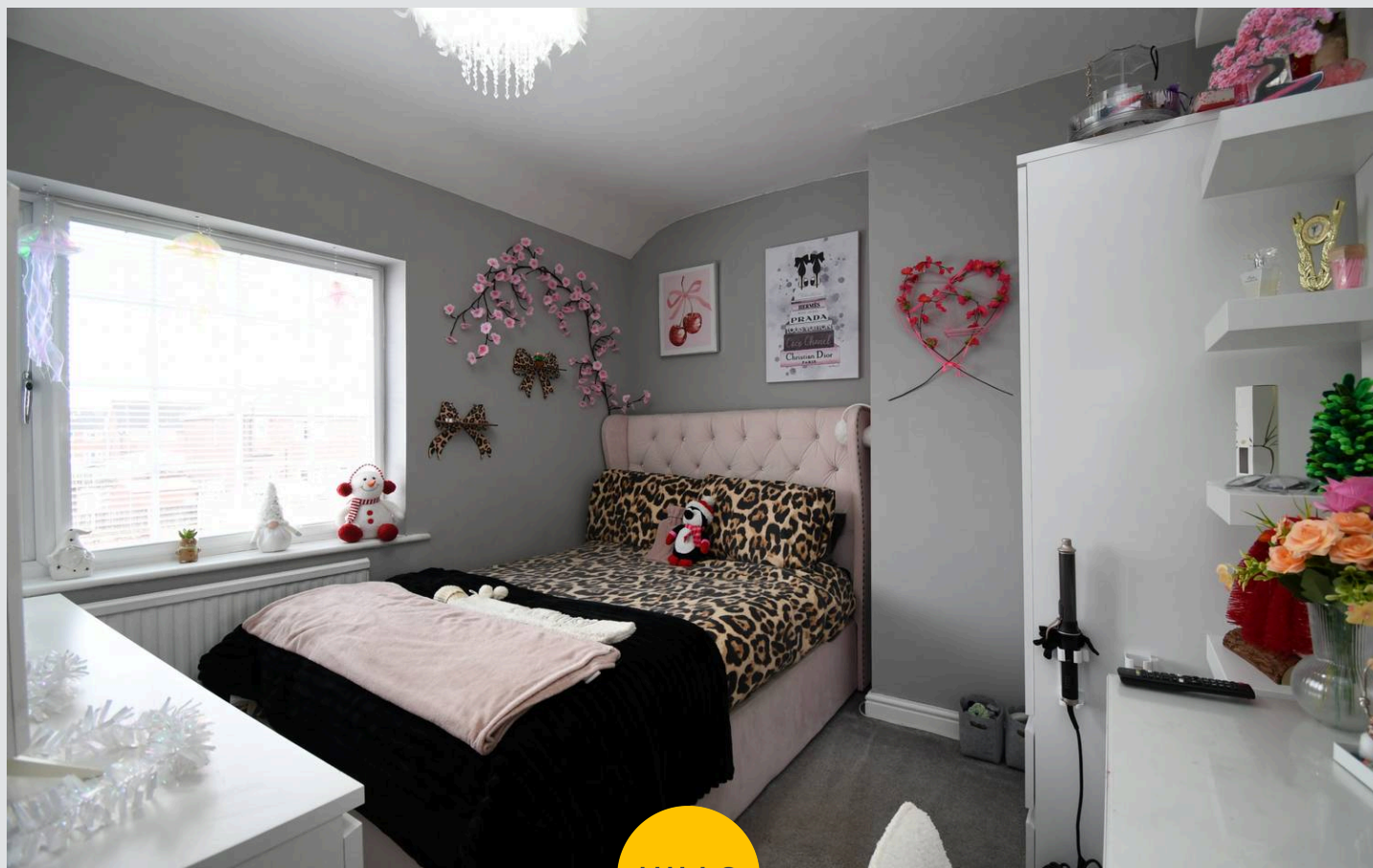
9' 7" x 9' 5" (2.92m x 2.87m)

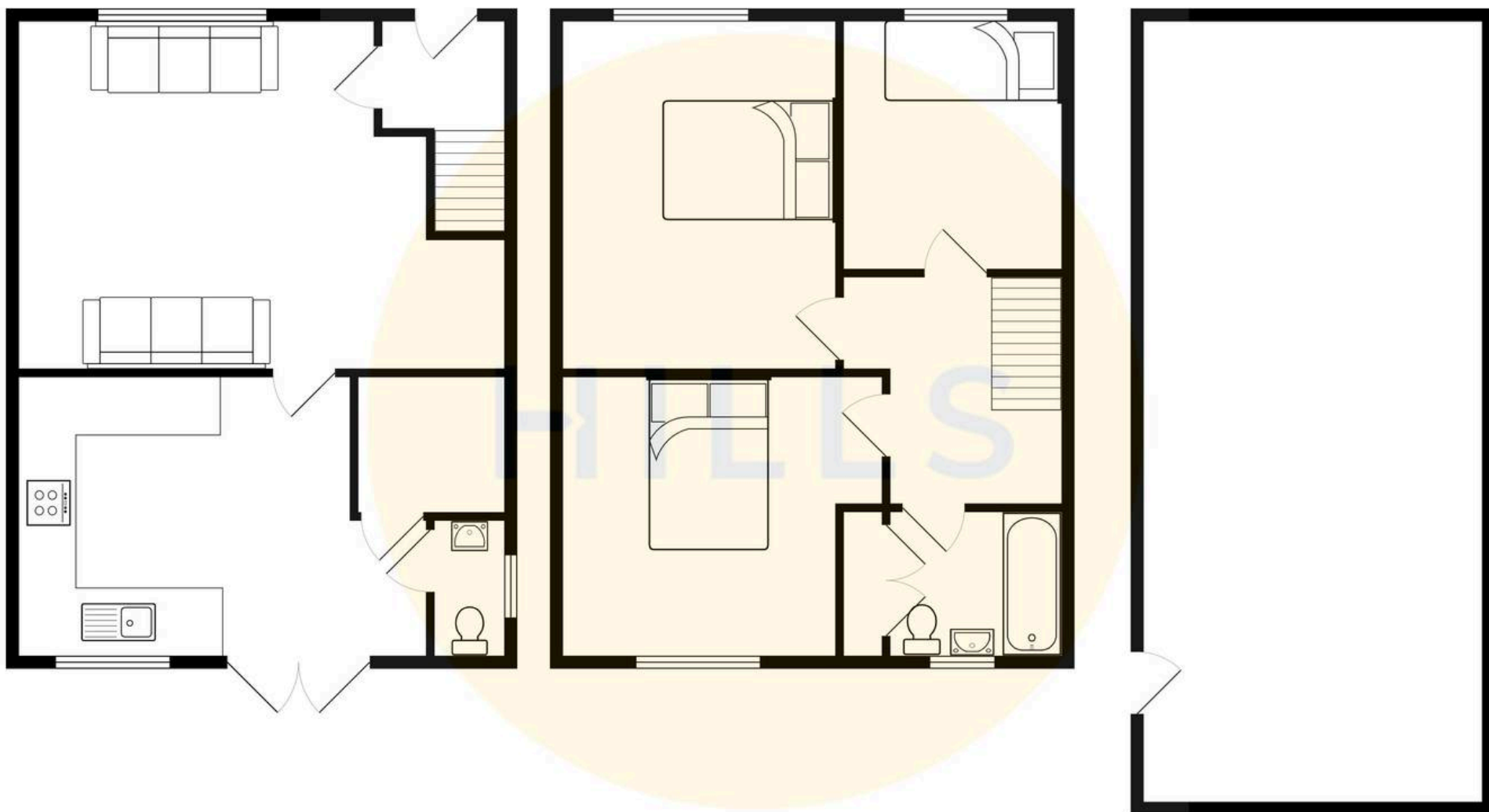
Bedroom Three

9' 9" x 7' 7" (2.96m x 2.31m)

Bathroom

5' 9" x 5' 5" (1.74m x 1.65m)







Hills | Salfords Estate Agent

Hills Residential, Sentinel House Albert Street – M30 0SS

0161 707 4900

sales@hills.agency

www.hills.agency/



By law, we are required to conduct anti-money laundering checks on all potential buyers and sellers. In line with HMRC guidelines, our trusted partner, Coadjute, will securely manage these checks on our behalf. A non-refundable fee of £45 + VAT per person will apply, and Coadjute will handle the payment. Once an offer is accepted, Coadjute will send a secure link for you to complete the biometric checks. These checks must be completed before we can send the memorandum of sale to all parties. PLEASE NOTE: The Agent has not tested any equipment, fixtures, fittings or services so cannot verify that they are in working order or fit for the purpose. References to the properties tenure are based on information supplied by the seller. You are advised to check the availability of this property before travelling any distance to view. Every effort has been made to ensure these particulars are correct and not misleading but their accuracy is not guaranteed nor do they form part of any contract.