



The Beeches, Sandwich Road

Manchester



Offers Over £120,000



# The Beeches

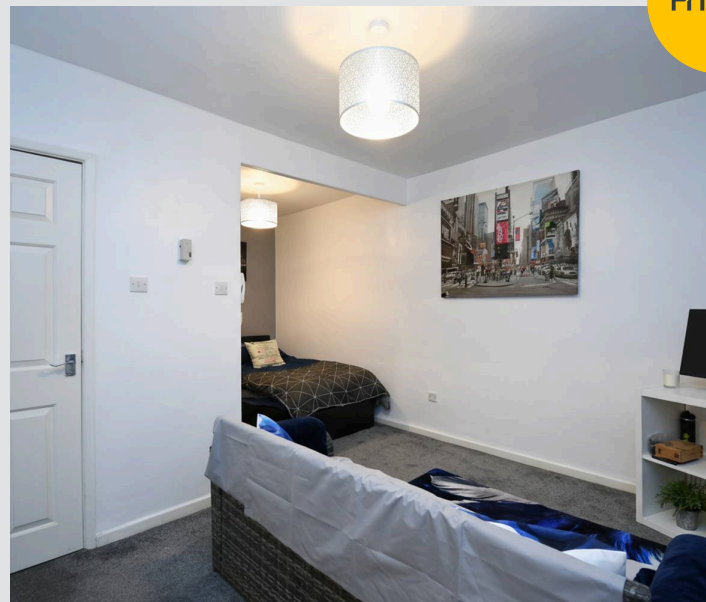
## Manchester

Ground floor studio in Ellesmere Park, near Monton Village and Salford Royal. Features large windows, separate kitchen, modern bathroom, great storage, parking, and communal gardens.

Council Tax band: B

Tenure: Leasehold

- Studio Apartment Located in the Desirable Ellesmere Park
- Naturally Bright Living Space with Floor to Ceiling Door Overlooking the Communal Gardens
- Quality Fitted Kitchen
- Timeless White Bathroom Suite
- Ample Storage Throughout
- Parking Available for Residents and Guests
- Walking Distance to Monton Village and Salford Royal Hospital
- Perfectly Positioned close to Excellent Public Transport & Motorway Links



HILLS

### Hallway

### Lounge/Bedroom

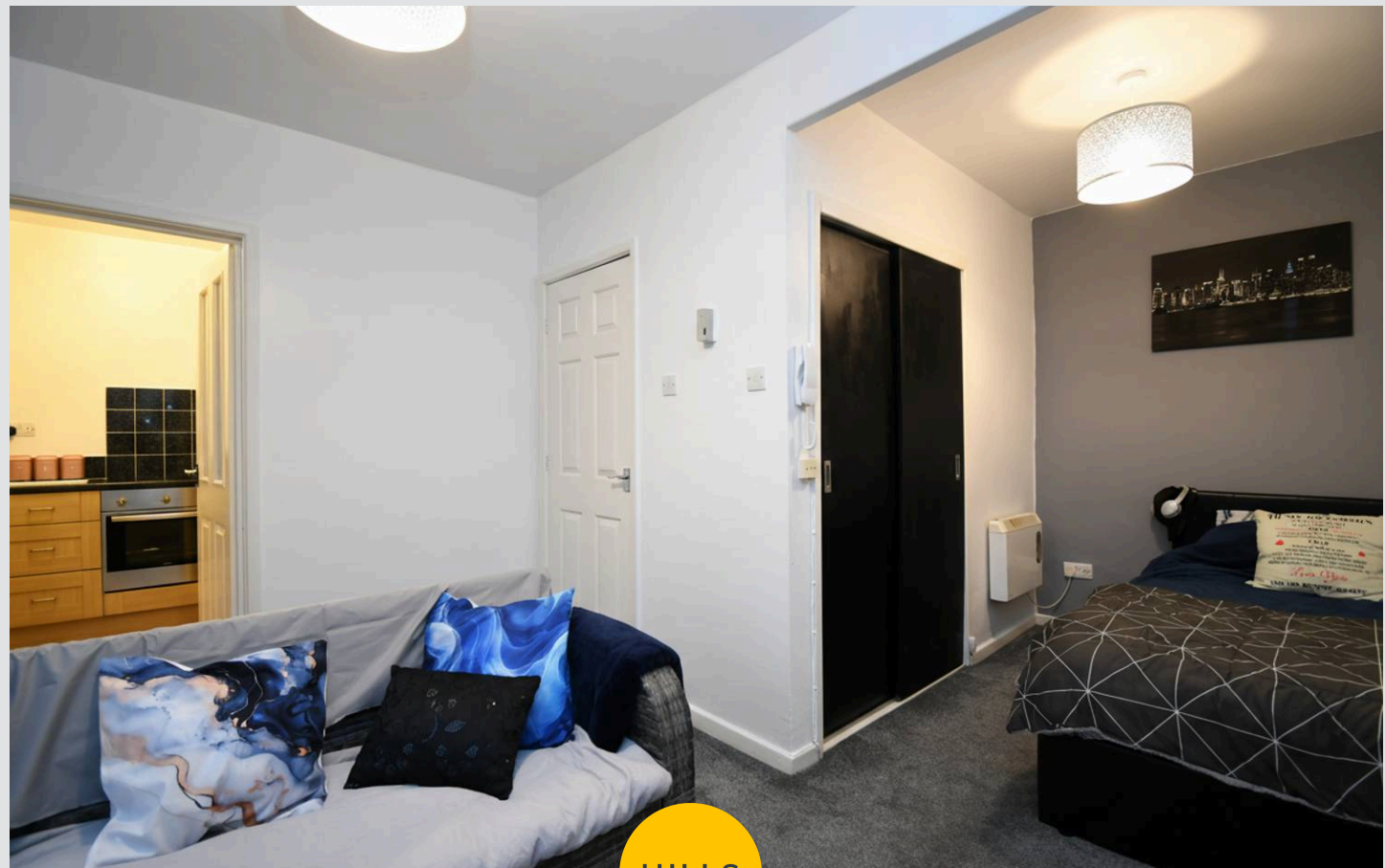
17' 7" x 11' 5" (5.36m x 3.48m)

### Kitchen

8' 1" x 7' 4" (2.46m x 2.23m)

### Bathroom

7' 3" x 5' 5" (2.21m x 1.65m)











## Hills | Salfords Estate Agent

Hills Residential, Sentinel House Albert Street – M30 0SS

0161 707 4900

[sales@hills.agency](mailto:sales@hills.agency)

[www.hills.agency/](http://www.hills.agency/)



By law, we are required to conduct anti-money laundering checks on all potential buyers and sellers. In line with HMRC guidelines, our trusted partner, Coadjute, will securely manage these checks on our behalf. A non-refundable fee of £45 + VAT per person will apply, and Coadjute will handle the payment. Once an offer is accepted, Coadjute will send a secure link for you to complete the biometric checks. These checks must be completed before we can send the memorandum of sale to all parties. PLEASE NOTE: The Agent has not tested any equipment, fixtures, fittings or services so cannot verify that they are in working order or fit for the purpose. References to the properties tenure are based on information supplied by the seller. You are advised to check the availability of this property before travelling any distance to view. Every effort has been made to ensure these particulars are correct and not misleading but their accuracy is not guaranteed nor do they form part of any contract.