



Redmans Close, Eccles

Manchester

HILLS

In Excess of £310,000

Redmans Close

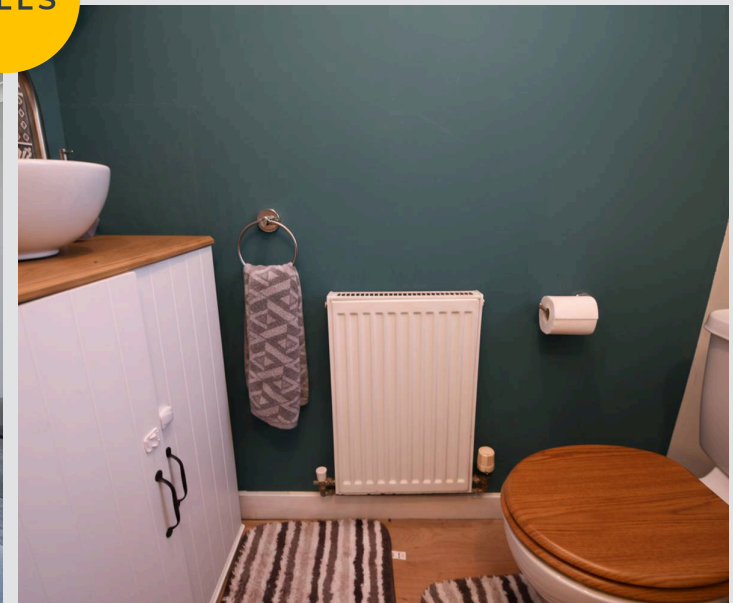
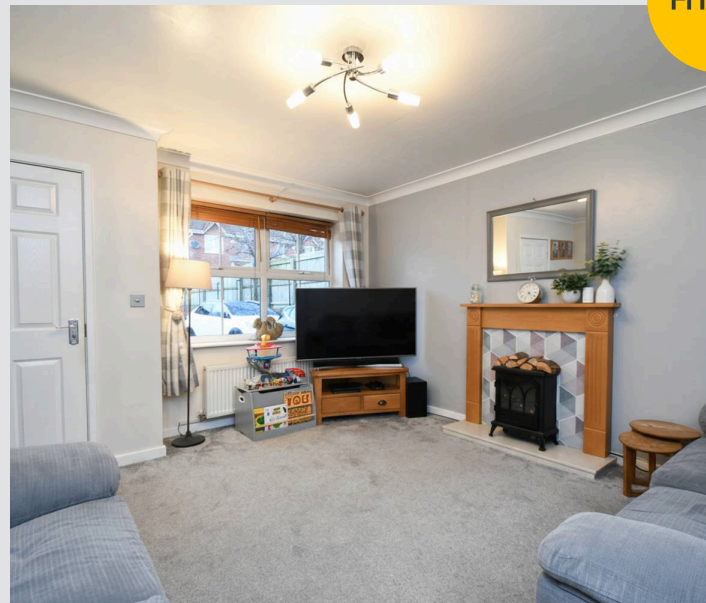
Eccles, Manchester

Stunning three bedroom extended semi-detached property featuring a contemporary kitchen diner with utility, three generous sized bedrooms and a modern bathroom suite!

Council Tax band: B

Tenure: Freehold

- Stunning three bedroom extended semi-detached property
- Contemporary fitted kitchen diner complete with centre island and utility
- Spacious lounge
- Three generous sized bedrooms
- Modern three-piece bathroom suite and downstairs W.C.
- Off-road parking to the front and low maintenance rear garden
- Perfectly Located Close to an Array of Amenities, Public Transport & Motorway Links
- Viewing is highly recommended!



Hallway

6' 8" x 3' 5" (2.02m x 1.04m)

WC

3' 5" x 6' 4" (1.05m x 1.93m)

Lounge

14' 8" x 15' 7" (4.48m x 4.76m)

Kitchen

18' 2" x 20' 8" (5.54m x 6.30m)

Utility Room

6' 0" x 9' 11" (1.84m x 3.03m)

Bedroom One

9' 0" x 11' 10" (2.75m x 3.60m)

Bedroom Two

8' 9" x 10' 6" (2.67m x 3.19m)

Bedroom Three

6' 10" x 6' 11" (2.09m x 2.10m)

Bathroom

9' 7" x 5' 10" (2.92m x 1.79m)



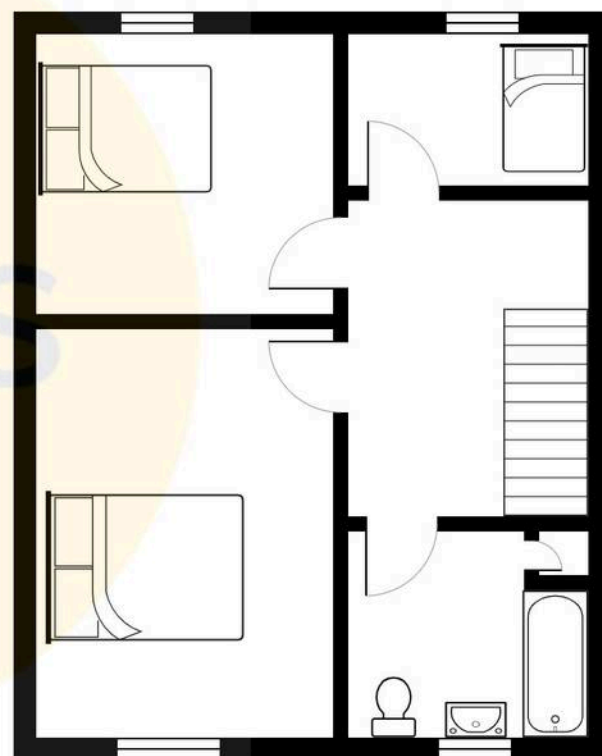
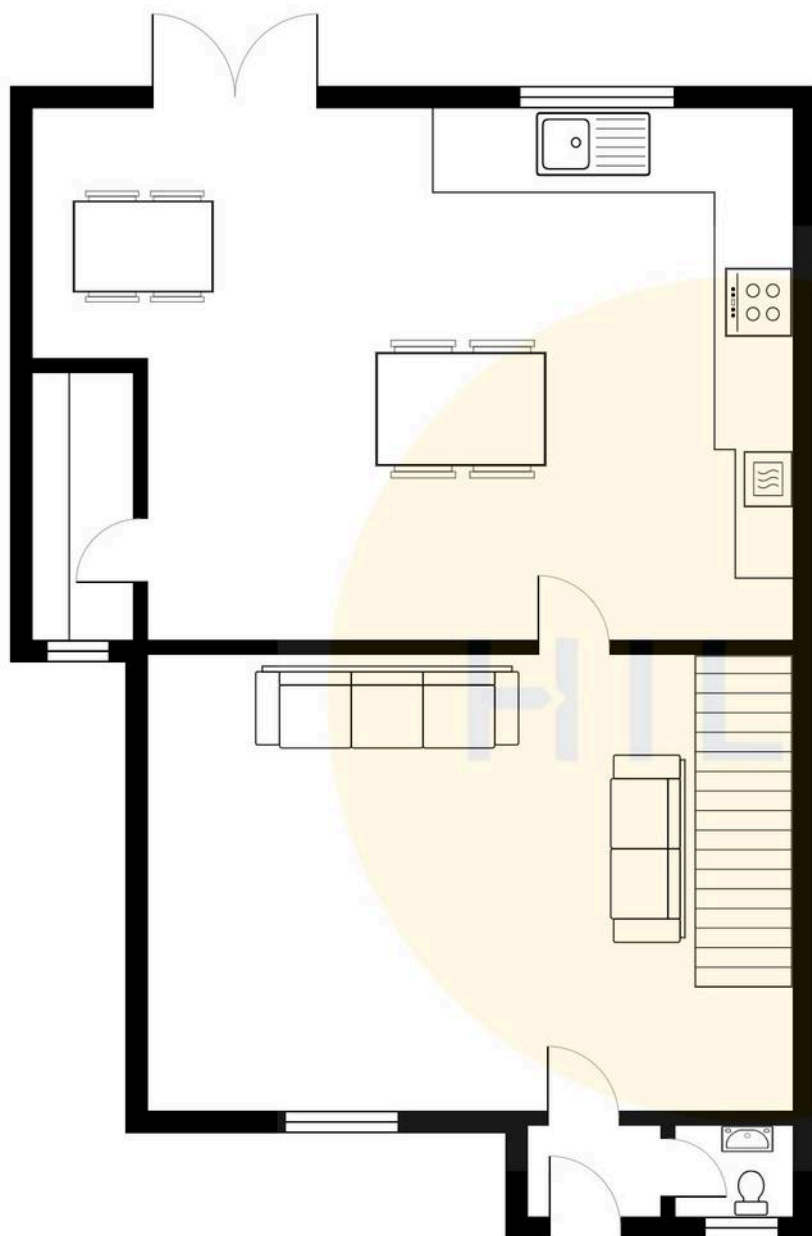
HILLS





HILLS







Hills | Salfords Estate Agent

Hills Residential, Sentinel House Albert Street – M30 0SS

0161 707 4900

sales@hills.agency

www.hills.agency/



By law, we are required to conduct anti-money laundering checks on all potential buyers and sellers. In line with HMRC guidelines, our trusted partner, Coadjute, will securely manage these checks on our behalf. A non-refundable fee of £45 + VAT per person will apply, and Coadjute will handle the payment. Once an offer is accepted, Coadjute will send a secure link for you to complete the biometric checks. These checks must be completed before we can send the memorandum of sale to all parties. PLEASE NOTE: The Agent has not tested any equipment, fixtures, fittings or services so cannot verify that they are in working order or fit for the purpose. References to the properties tenure are based on information supplied by the seller. You are advised to check the availability of this property before travelling any distance to view. Every effort has been made to ensure these particulars are correct and not misleading but their accuracy is not guaranteed nor do they form part of any contract.