



Maurice Street

Salford



In Excess of **£220,000**

Maurice Street

Salford

Situated within easy access of Salford Quays/Media City and the City Centre is this MODERN SEMI-DETACHED HOME that features a LARGE GARDEN PLOT, TWO DOUBLE BEDROOMS & OFF-ROAD PARKING!

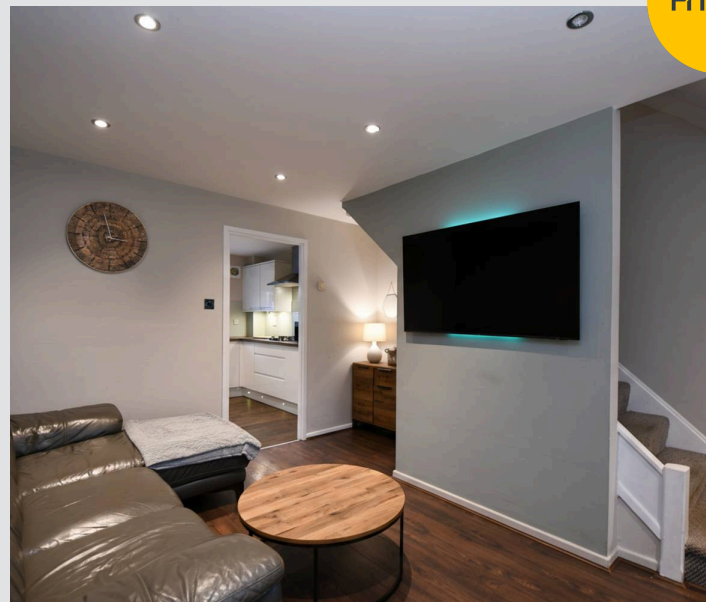
Council Tax band: A

Tenure: Leasehold

- Beautifully presented two bedroom semi-detached property
- Ideally Located Close to Excellent Transport Links to Salford Quays/Media City and the City Centre
- Within Walking Distance of the University of Salford and Local Amenities
- Driveway Providing Off-Road Parking for Several Cars to the Front
- Family Lounge and Modern Kitchen Diner
- Two Double Bedrooms and a Three-Piece Family Bathroom
- Situated on a Quiet Cul-de-Sac
- Early Viewing Essential!
- Well-Presented Gardens to the Front and Rear
- Ideal First Time Home



HILLS



Entrance Hallway

5' 7" x 3' 3" (1.69m x 0.98m)

Lounge

15' 9" x 12' 2" (4.79m x 3.70m)

Kitchen

10' 10" x 12' 1" (3.31m x 3.68m)

Landing**Bedroom One**

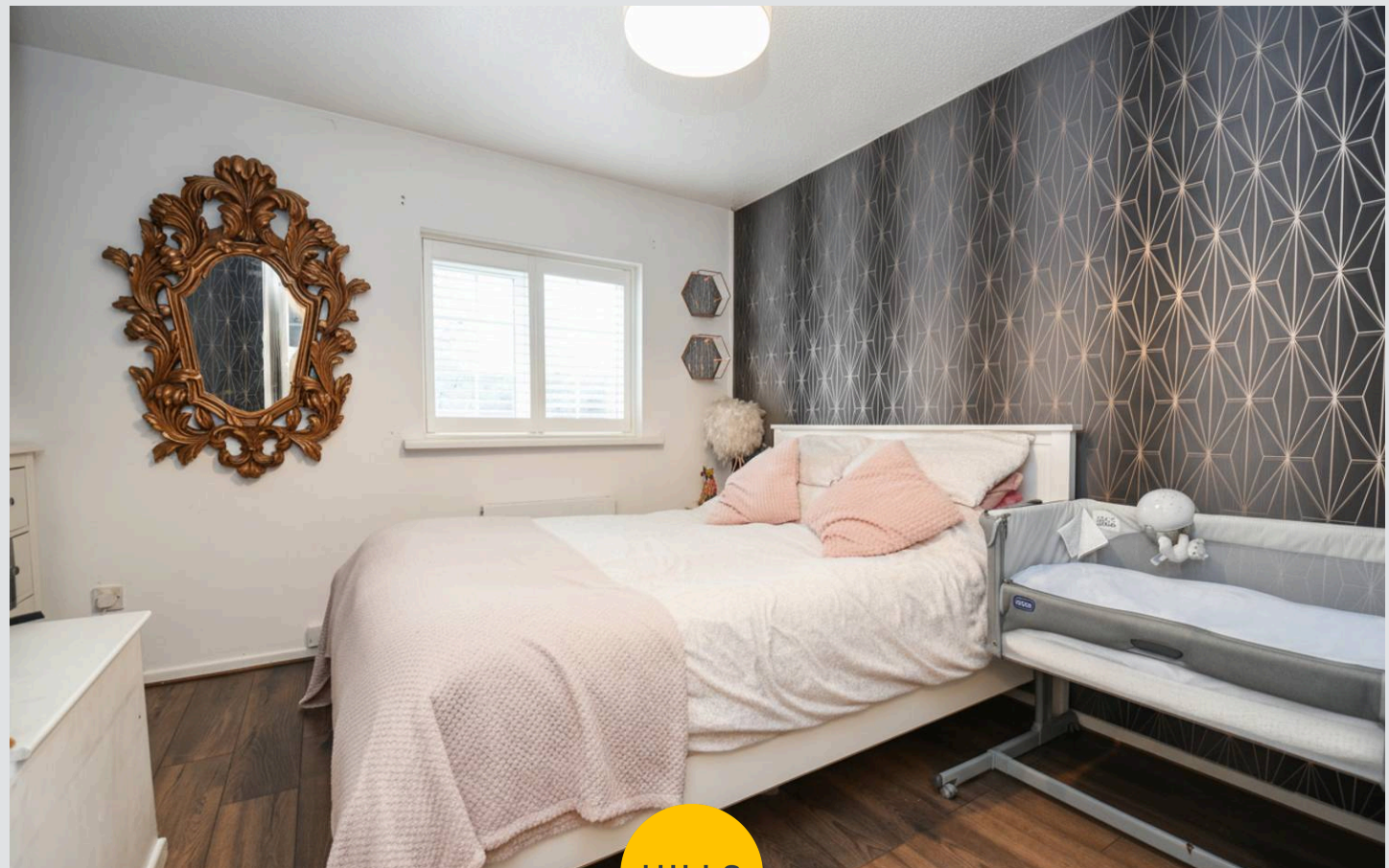
11' 5" x 12' 2" (3.49m x 3.70m)

Bedroom Two

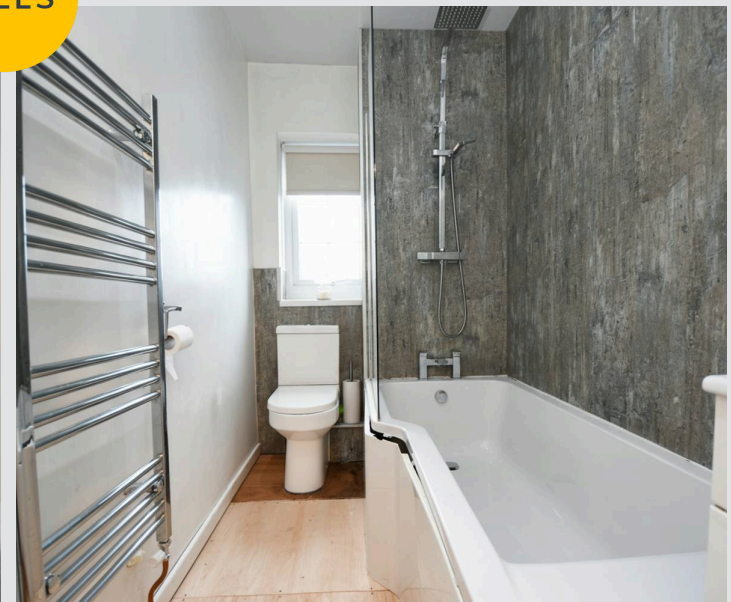
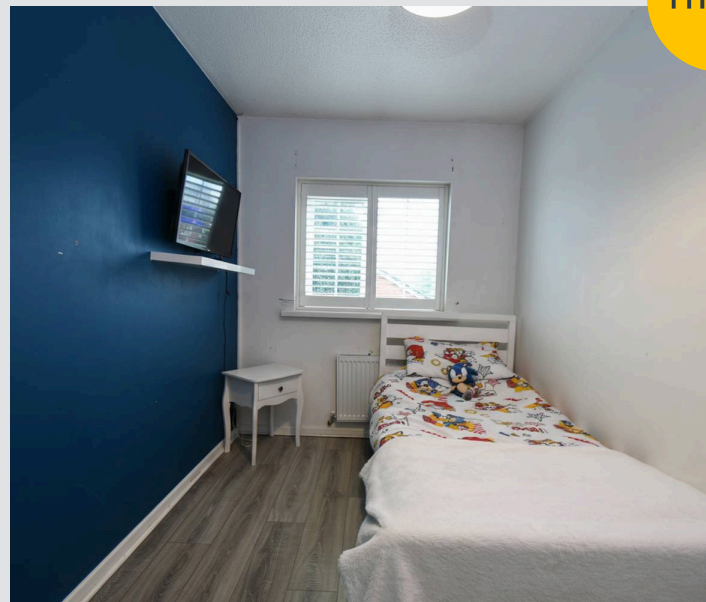
6' 7" x 12' 4" (2.01m x 3.77m)

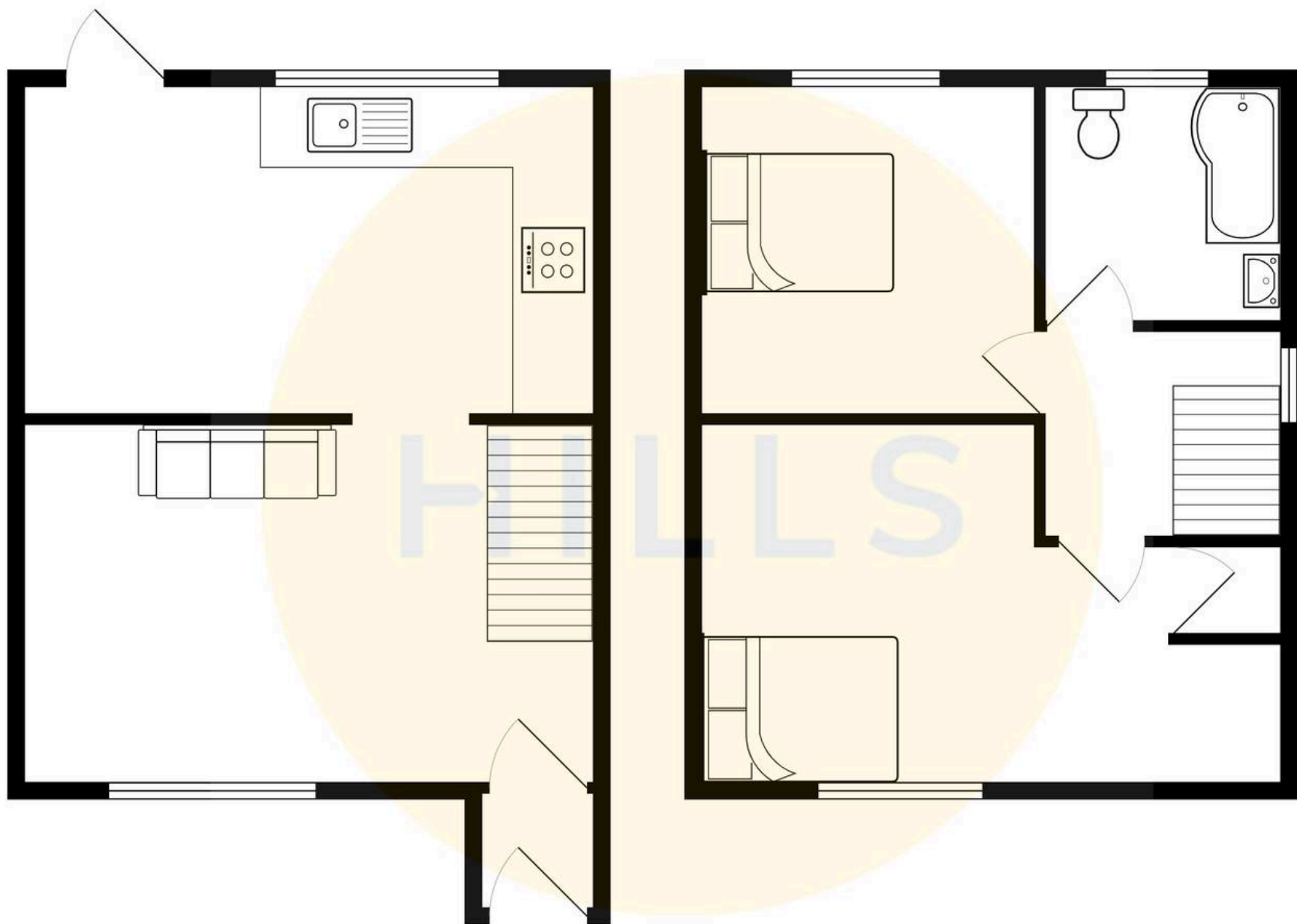
Bathroom

10' 1" x 4' 9" (3.08m x 1.45m)



HILLS







Hills | Salfords Estate Agent

Hills Residential, Sentinel House Albert Street – M30 0SS

0161 707 4900

sales@hills.agency

www.hills.agency/



By law, we are required to conduct anti-money laundering checks on all potential buyers and sellers. In line with HMRC guidelines, our trusted partner, Coadjute, will securely manage these checks on our behalf. A non-refundable fee of £45 + VAT per person will apply, and Coadjute will handle the payment. Once an offer is accepted, Coadjute will send a secure link for you to complete the biometric checks. These checks must be completed before we can send the memorandum of sale to all parties. PLEASE NOTE: The Agent has not tested any equipment, fixtures, fittings or services so cannot verify that they are in working order or fit for the purpose. References to the properties tenure are based on information supplied by the seller. You are advised to check the availability of this property before travelling any distance to view. Every effort has been made to ensure these particulars are correct and not misleading but their accuracy is not guaranteed nor do they form part of any contract.