



Liverpool Road, Cadishead
Manchester



In Excess of £160,000

261 Liverpool Road

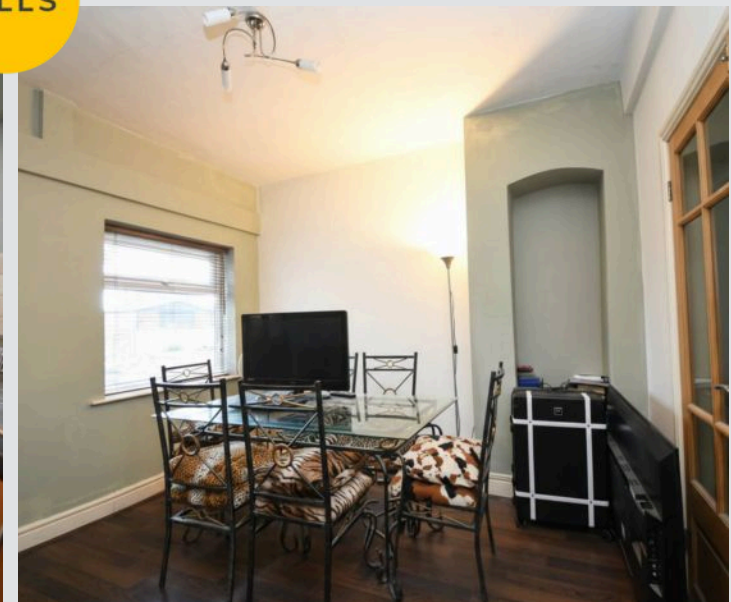
Cadishead, Manchester

Extended terrace on three floors with two reception rooms, two double bedrooms, four piece bathroom, kitchen, utility, guest W.C., off road parking, and great transport links.

Council Tax band: A

Tenure: Freehold

- Fantastic First Time Buy or Investment
- Extended Terrace Property Laid over Three Floors
- Two Reception Rooms
- Two Double Bedrooms
- Four Piece Fitted Bathroom Suite
- Fitted Kitchen
- Guest W.C. & Utility Space
- Low Maintenance Yard to the Rear
- Off Road Parking to the Rear of the Property
- Surrounded by Excellent Amenities and Brilliant Transport Links



HILLS

Entrance Hallway

Reception Room One

13' 4" x 11' 7" (4.06m x 3.53m)

Reception Room Two

10' 6" x 10' 4" (3.20m x 3.15m)

Kitchen

7' 7" x 6' 5" (2.31m x 1.96m)

W.C. / Utility Room

6' 4" x 5' 6" (1.93m x 1.68m)

Landing

Bedroom One

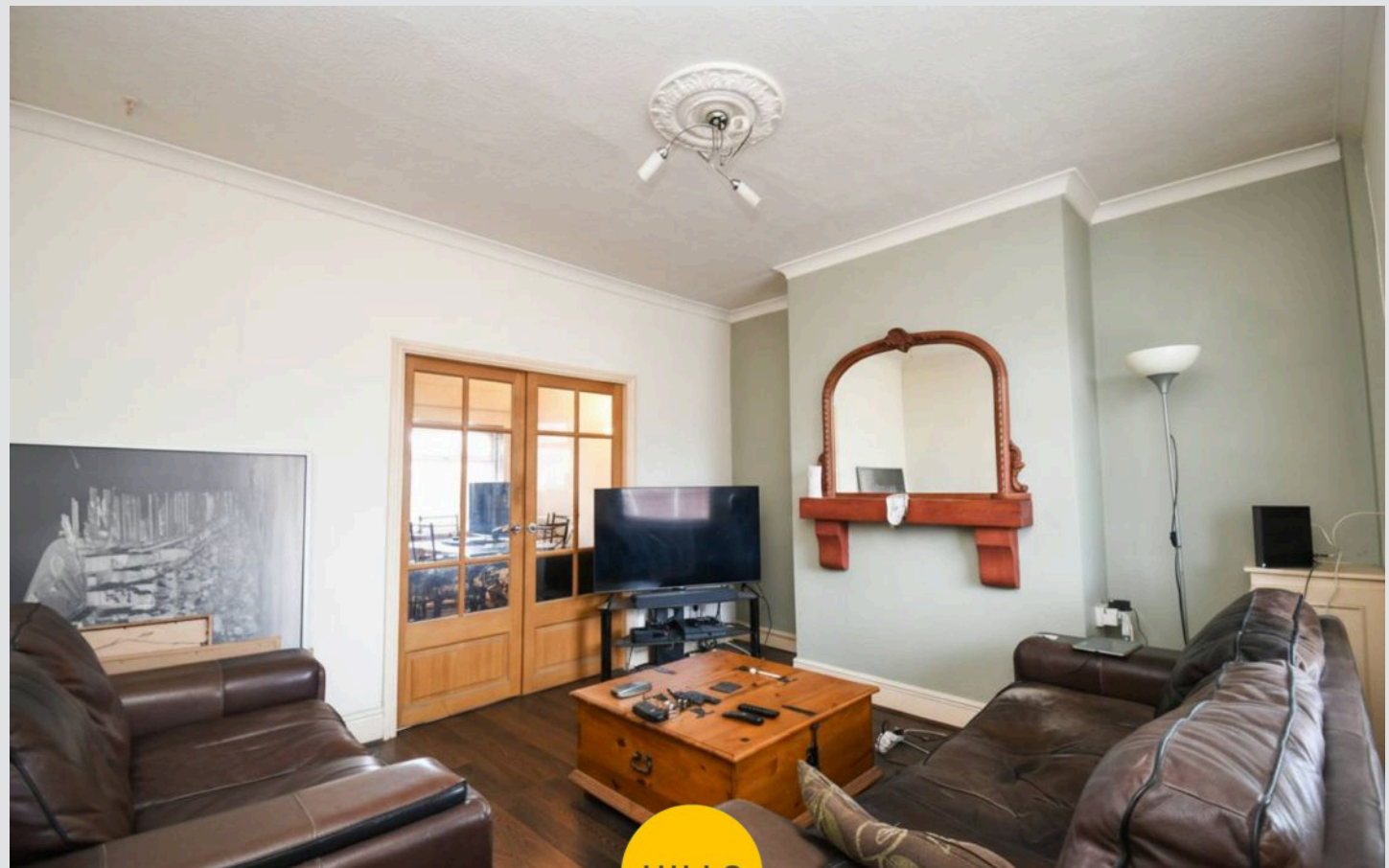
13' 4" x 11' 7" (4.06m x 3.53m)

Bedroom Two

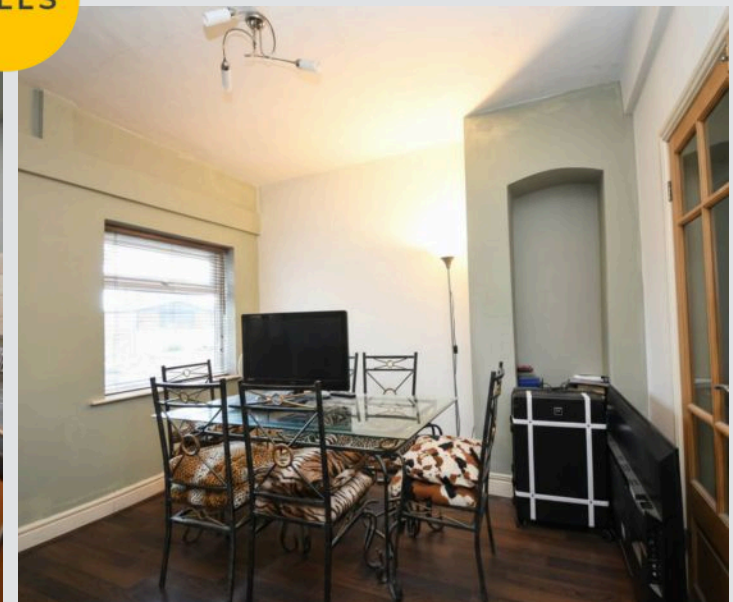
19' 6" x 13' 3" (5.94m x 4.04m)

Bathroom

10' 3" x 7' 3" (3.12m x 2.21m)



HILLS



Entrance Hallway

Reception Room One

13' 4" x 11' 7" (4.06m x 3.53m)

Reception Room Two

10' 6" x 10' 4" (3.20m x 3.15m)

Kitchen

7' 7" x 6' 5" (2.31m x 1.96m)

W.C. / Utility Room

6' 4" x 5' 6" (1.93m x 1.68m)

Landing

Bedroom One

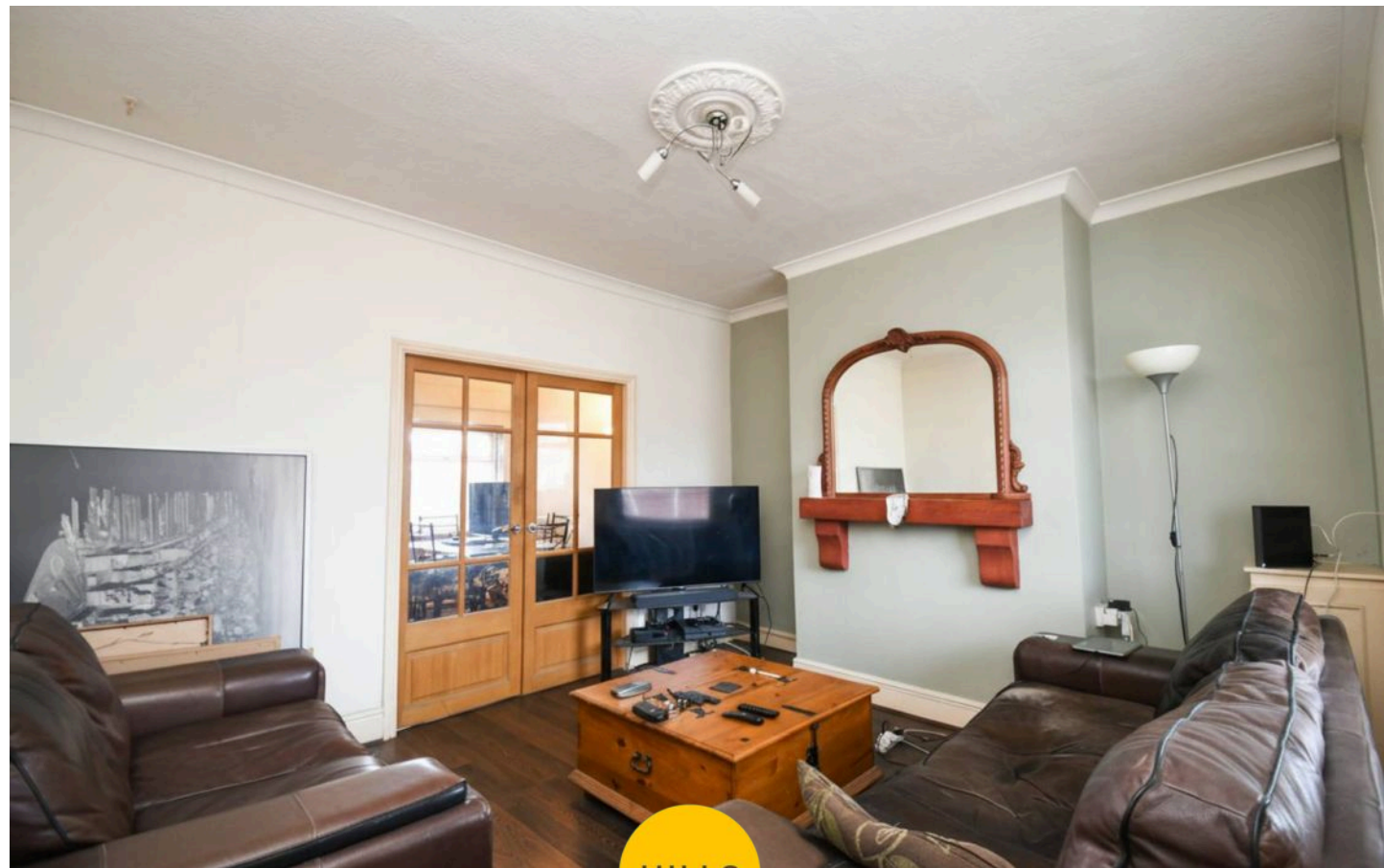
13' 4" x 11' 7" (4.06m x 3.53m)

Bedroom Two

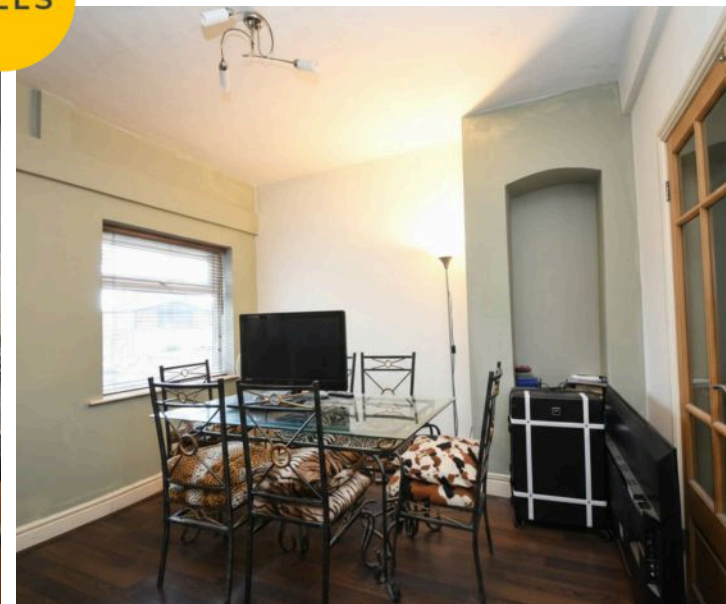
19' 6" x 13' 3" (5.94m x 4.04m)

Bathroom

10' 3" x 7' 3" (3.12m x 2.21m)

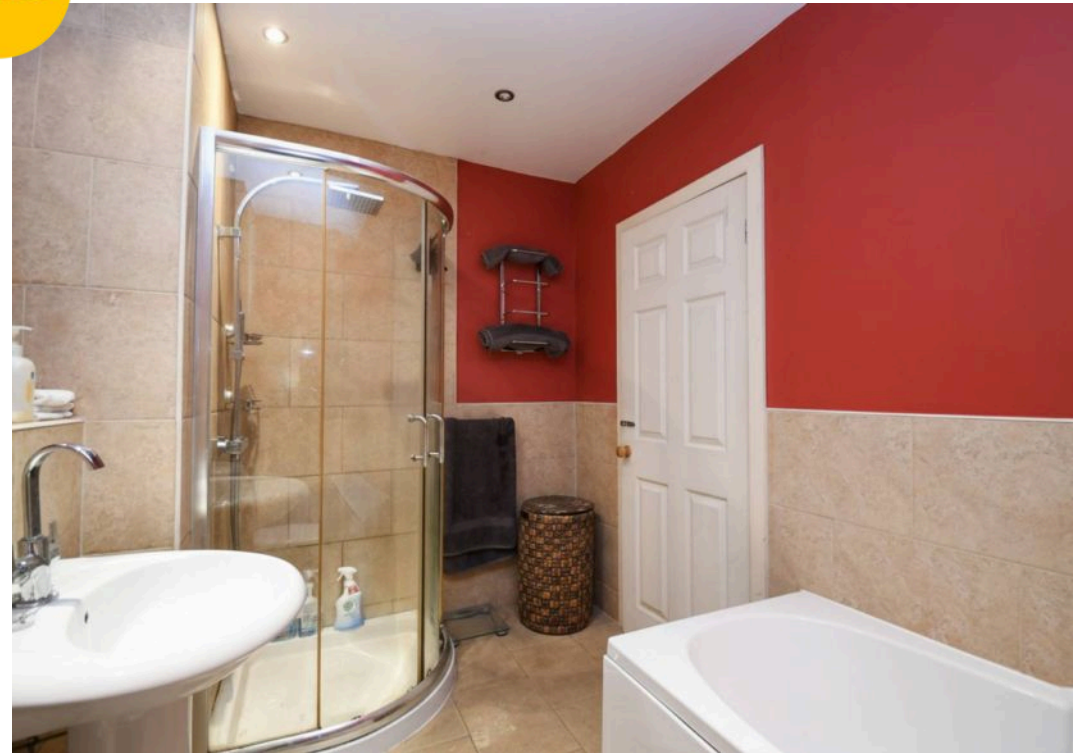


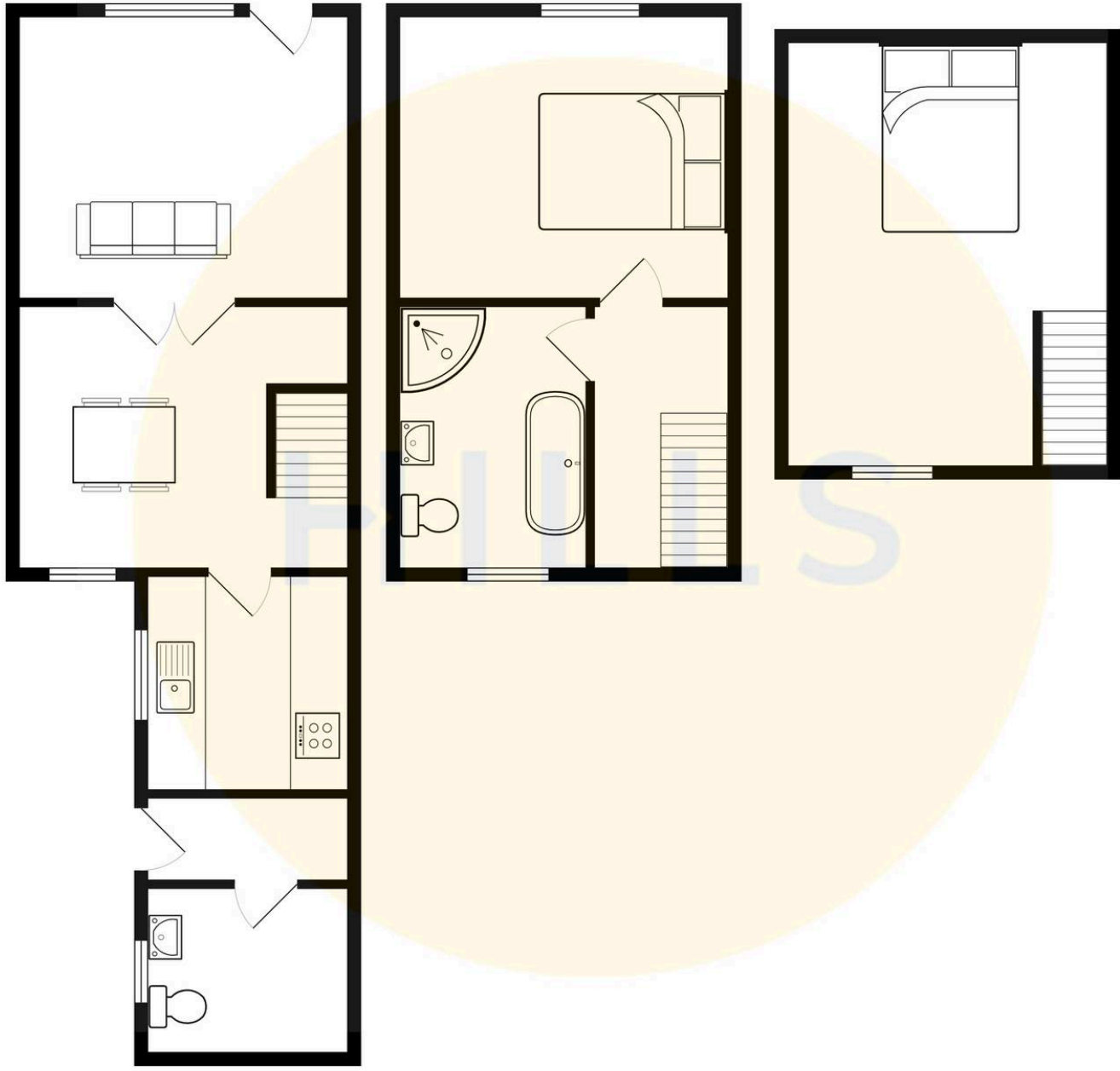
HILLS

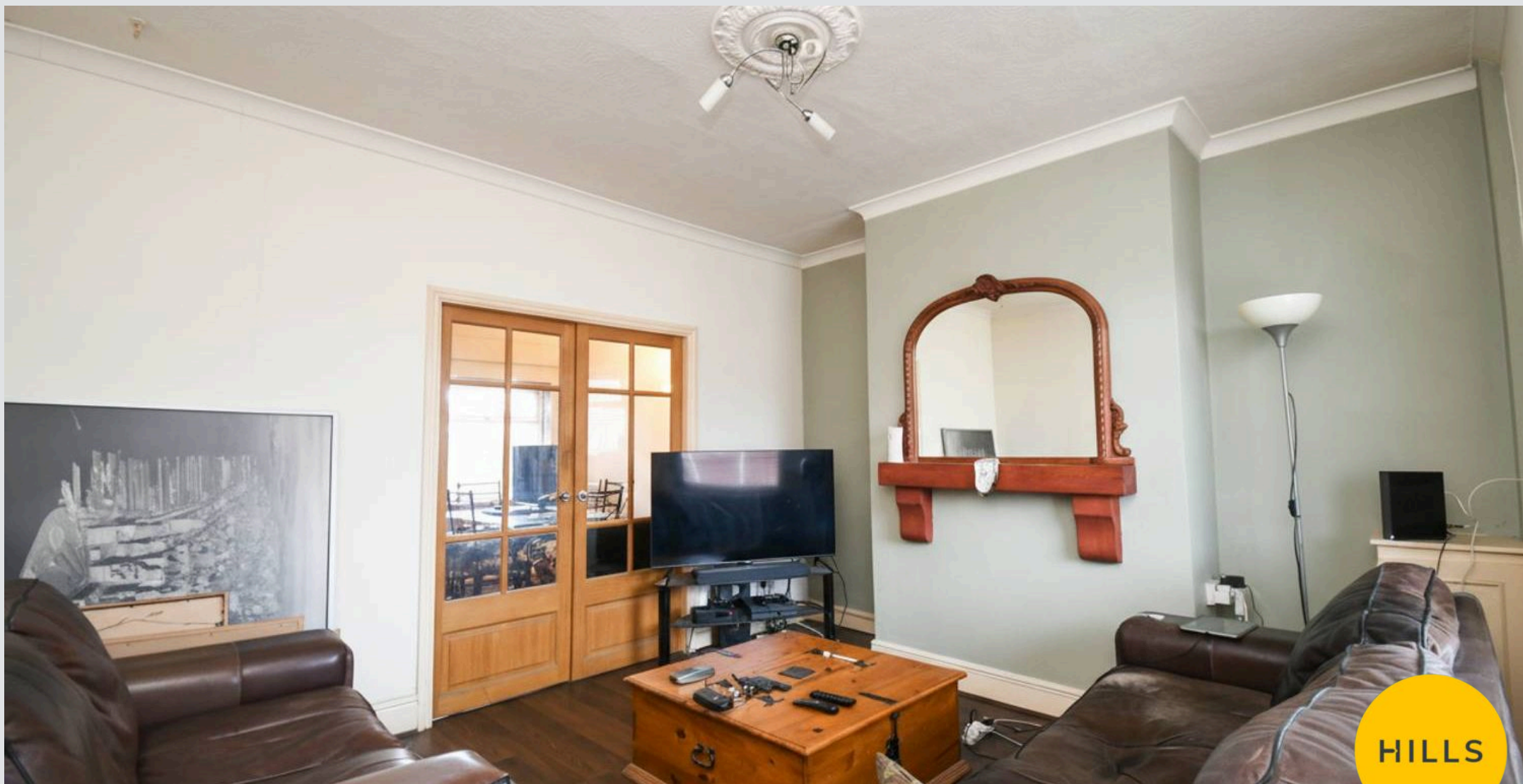




HILLS







Hills | Salfords Estate Agent

Hills Residential, Sentinel House Albert Street – M30 0SS

0161 707 4900

sales@hills.agency

www.hills.agency/



By law, we are required to conduct anti-money laundering checks on all potential buyers and sellers. In line with HMRC guidelines, our trusted partner, Coadjute, will securely manage these checks on our behalf. A non-refundable fee of £45 + VAT per person will apply, and Coadjute will handle the payment. Once an offer is accepted, Coadjute will send a secure link for you to complete the biometric checks. These checks must be completed before we can send the memorandum of sale to all parties. PLEASE NOTE: The Agent has not tested any equipment, fixtures, fittings or services so cannot verify that they are in working order or fit for the purpose. References to the properties tenure are based on information supplied by the seller. You are advised to check the availability of this property before travelling any distance to view. Every effort has been made to ensure these particulars are correct and not misleading but their accuracy is not guaranteed nor do they form part of any contract.