



Leach Drive, Eccles

Manchester



In Excess of £325,000



# Leach Drive

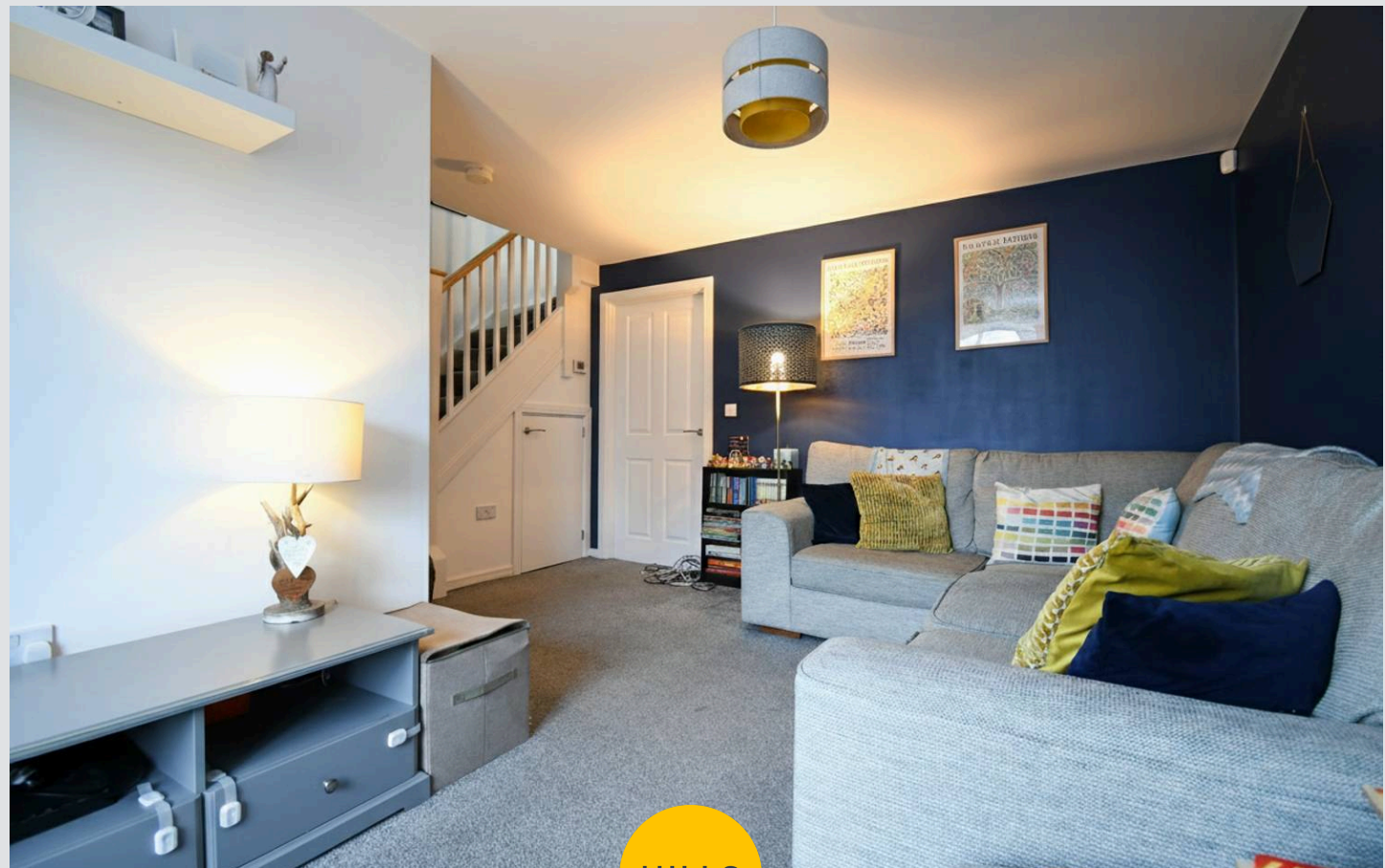
Eccles, Manchester

Immaculate three bed detached home near Monton Village. Features open plan kitchen, en suite, off road parking, and modern finishes. Close to schools, hospitals, and transport links.

Council Tax band: C

Tenure: Leasehold

- Located on the Desirable Works Development, just a Short Walk from Monton Village
- Perfect First Time Purchase
- Bay Fronted Lounge
- Open Plan Kitchen and Dining Space
- Three Generous Bedrooms
- Three Piece Family Bathroom, En Suite to the Master and Guest W.C.
- Off Road Parking For Multiple Cars
- Well Maintained Landscaped Garden to the Rear
- Surrounded by Excellent Amenities, Brilliant Public Transport & Motorway Links



HILLS



## Entrance Hallway

## Lounge

16' 4" x 15' 8" (4.98m x 4.78m)

## Kitchen / Diner

15' 8" x 10' 7" (4.78m x 3.23m)

## Downstairs W.C.

## Landing

## Bedroom One

12' 1" x 9' 1" (3.68m x 2.77m)

## En suite

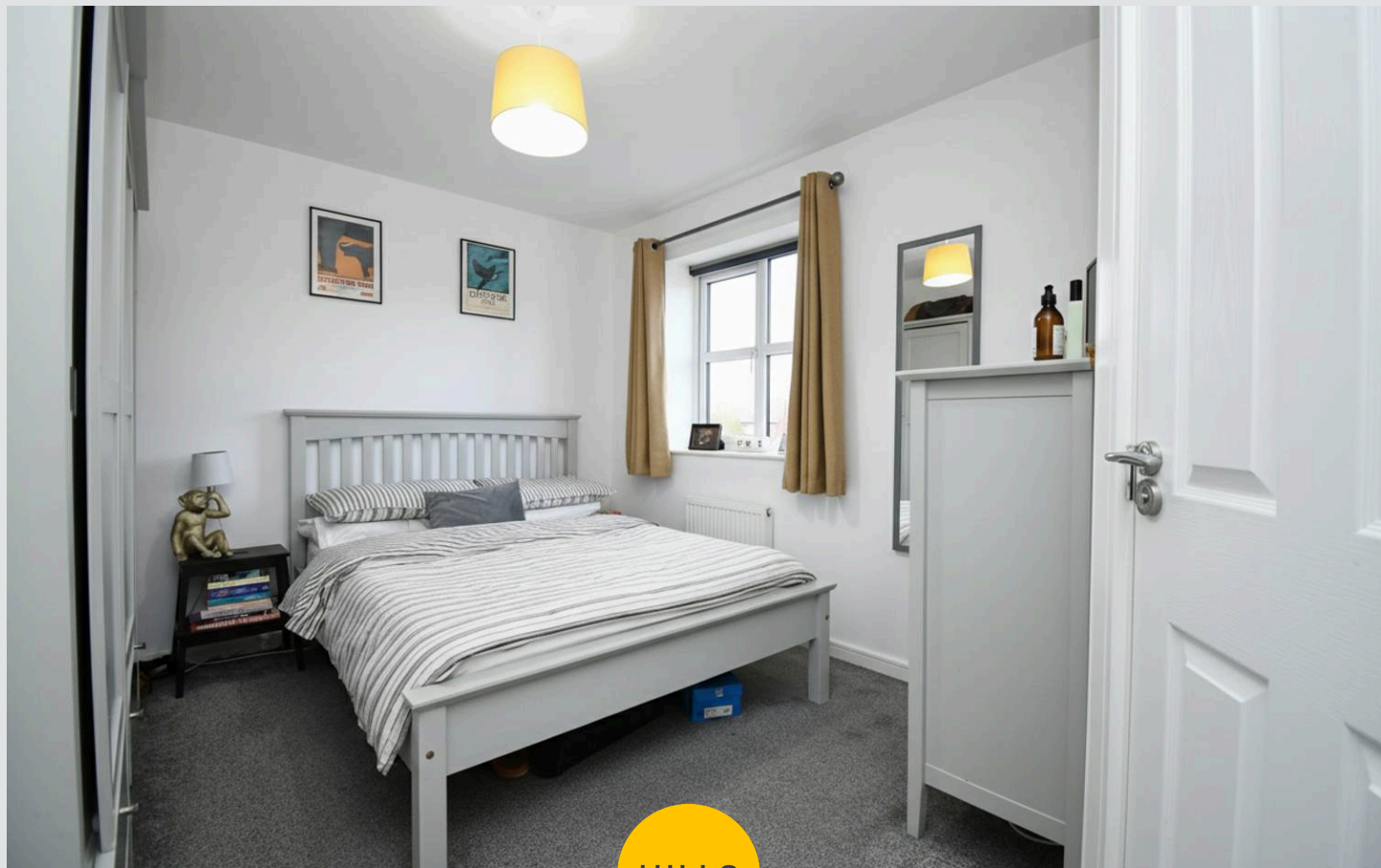
## Bedroom Two

8' 9" x 8' 7" (2.67m x 2.62m)

## Bedroom Three

8' 8" x 6' 5" (2.64m x 1.96m)

## Bathroom







HILLS











## Hills | Salfords Estate Agent

Hills Residential, Sentinel House Albert Street – M30 0SS

0161 707 4900

[sales@hills.agency](mailto:sales@hills.agency)

[www.hills.agency/](http://www.hills.agency/)



By law, we are required to conduct anti-money laundering checks on all potential buyers and sellers. In line with HMRC guidelines, our trusted partner, Coadjute, will securely manage these checks on our behalf. A non-refundable fee of £45 + VAT per person will apply, and Coadjute will handle the payment. Once an offer is accepted, Coadjute will send a secure link for you to complete the biometric checks. These checks must be completed before we can send the memorandum of sale to all parties. PLEASE NOTE: The Agent has not tested any equipment, fixtures, fittings or services so cannot verify that they are in working order or fit for the purpose. References to the properties tenure are based on information supplied by the seller. You are advised to check the availability of this property before travelling any distance to view. Every effort has been made to ensure these particulars are correct and not misleading but their accuracy is not guaranteed nor do they form part of any contract.