



Higher Green Lane, Tyldesley

Manchester



Offers in Region of £270,000

41a Higher Green Lane

Tyldesley, Manchester

*Stylish Three Bedroom Semi-Detached Property
Occupying a Generous Plot - Located in the Popular
Astley Area! Boasting a Lovely Landscaped Garden
to the Rear!*

Council Tax band: A

Tenure: Leasehold

- Stylish Three Bedroom Semi-Detached Property
- Located in the Popular Astley Area, Close to Amenities and Green Space
- Bay-Fronted Family Lounge
- Modern Kitchen Diner with Patio Doors to the Rear
- Three Well-Proportioned Bedrooms
- Modern, Three-Piece Bathroom
- Driveway for Off-Road Parking to the Front
- Beautifully Presented, Landscaped Garden to the Rear with Paving and Laid-to-Lawn Grass
- Close to Excellent Transport Links into Manchester and Warrington
- Within Easy Access of Local Schooling and Amenities, Including Pubs and Restaurants



HILLS

Porch

Hallway

Living Room

14' 2" x 12' 2" (4.31m x 3.71m)

Kitchen Diner

15' 4" x 8' 2" (4.67m x 2.48m)

Landing

Bedroom One

11' 0" x 9' 1" (3.36m x 2.76m)

Bedroom Two

9' 6" x 9' 5" (2.89m x 2.86m)

Bedroom Three

7' 10" x 0' 3" (2.40m x 0.08m)

Bathroom

5' 7" x 5' 5" (1.69m x 1.66m)



HILLS



Porch

Hallway

Living Room

14' 2" x 12' 2" (4.31m x 3.71m)

Kitchen Diner

15' 4" x 8' 2" (4.67m x 2.48m)

Landing

Bedroom One

11' 0" x 9' 1" (3.36m x 2.76m)

Bedroom Two

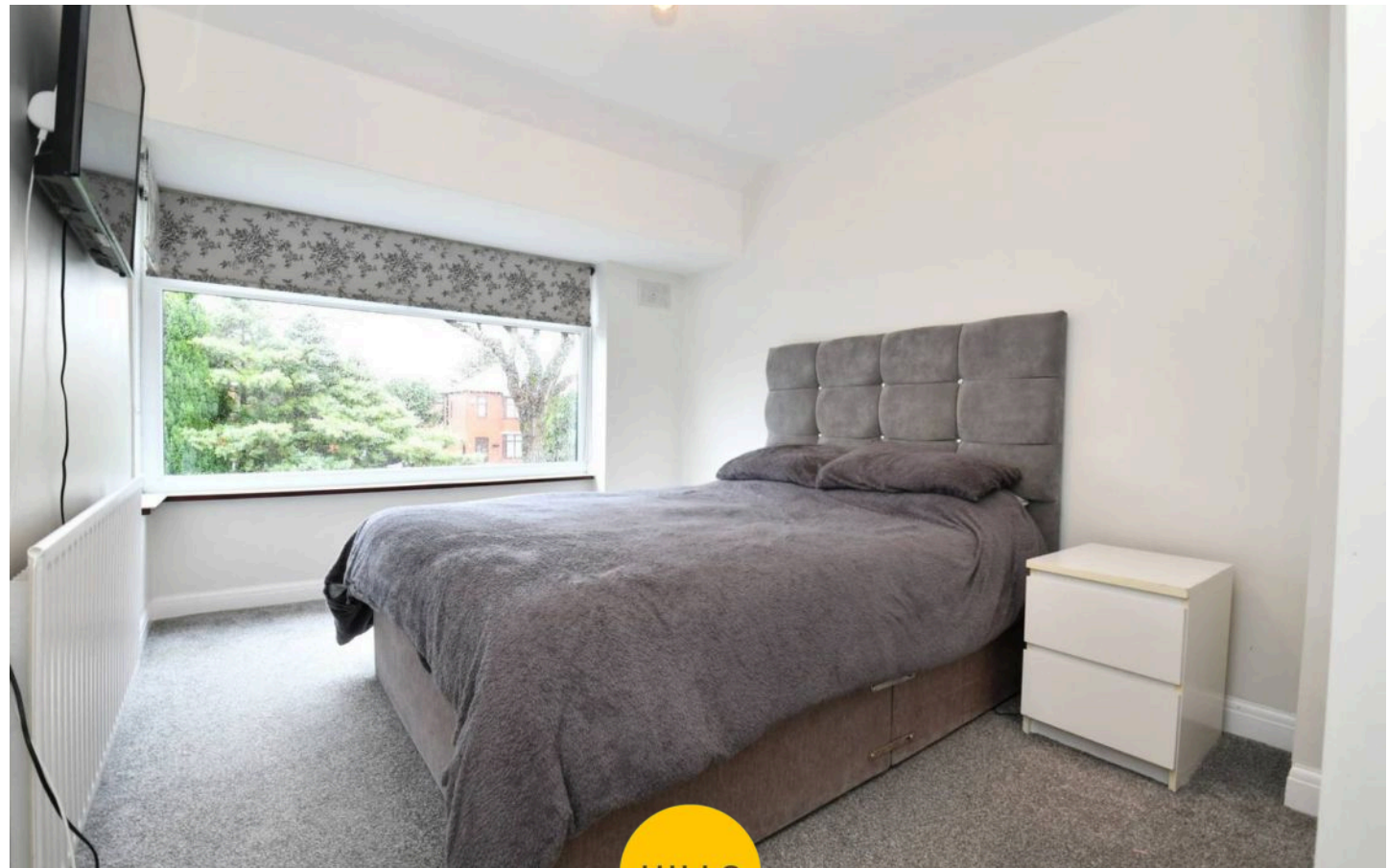
9' 6" x 9' 5" (2.89m x 2.86m)

Bedroom Three

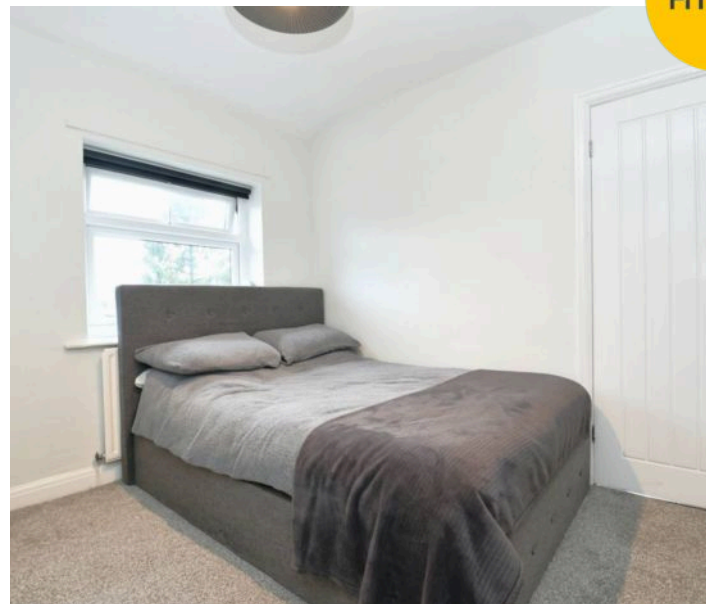
7' 10" x 0' 3" (2.40m x 0.08m)

Bathroom

5' 7" x 5' 5" (1.69m x 1.66m)



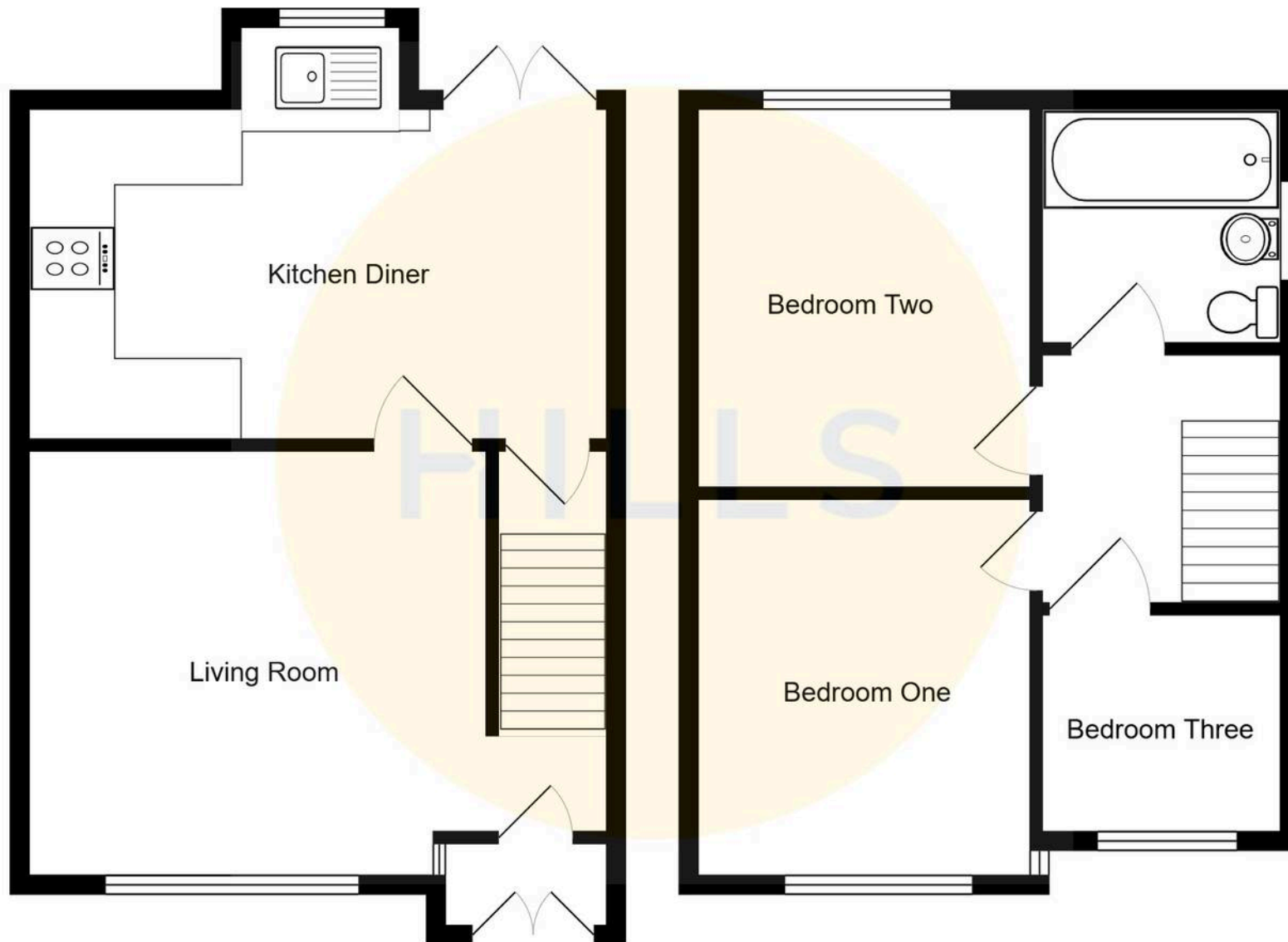
HILLS





HILLS







Hills | Salfords Estate Agent

Hills Residential, Sentinel House Albert Street – M30 0SS

0161 707 4900

sales@hills.agency

www.hills.agency/



By law, we are required to conduct anti-money laundering checks on all potential buyers and sellers. In line with HMRC guidelines, our trusted partner, Coadjute, will securely manage these checks on our behalf. A non-refundable fee of £45 + VAT per person will apply, and Coadjute will handle the payment. Once an offer is accepted, Coadjute will send a secure link for you to complete the biometric checks. These checks must be completed before we can send the memorandum of sale to all parties. PLEASE NOTE: The Agent has not tested any equipment, fixtures, fittings or services so cannot verify that they are in working order or fit for the purpose. References to the properties tenure are based on information supplied by the seller. You are advised to check the availability of this property before travelling any distance to view. Every effort has been made to ensure these particulars are correct and not misleading but their accuracy is not guaranteed nor do they form part of any contract.