



Higher Green Lane, Astley

Manchester

HILLS

Offers in Region of £260,000

31 Higher Green Lane

Tyldesley, Manchester

Beautifully Presented Three Bedroom Semi-Detached Property Renovated to a Fantastic Standard – Located in the Popular Astley Area!

Council Tax band: B

Tenure: Leasehold

- Beautifully Presented Three Bedroom Semi-Detached Property
- Located in the Popular Astley Area, Close to Amenities and Green Space
- Undergone a Series of Renovations in 2021 to get it to the Fantastic Standard it is Today!
- Spacious Living Room
- Contemporary Kitchen Diner with Patio Doors to the Rear
- Three Well-Proportioned Bedrooms
- Stylish Three-Piece Bathroom
- Driveway with Off-Road Parking for Two Cars
- Well-Presented Garden to the Rear with Artificial Grass and Paving
- Close to Excellent Transport Links into Manchester and Warrington



HILLS



Hallway

Lounge

14' 1" x 12' 6" (4.29m x 3.81m)

Kitchen Diner

17' 2" x 9' 3" (5.24m x 2.81m)

Landing

Bedroom One

13' 1" x 8' 10" (4.00m x 2.68m)

Bedroom Two

10' 3" x 8' 8" (3.12m x 2.65m)

Bedroom Three

10' 2" x 8' 1" (3.10m x 2.47m)

Bathroom

8' 6" x 6' 8" (2.59m x 2.02m)



Hallway

Lounge

14' 1" x 12' 6" (4.29m x 3.81m)

Kitchen Diner

17' 2" x 9' 3" (5.24m x 2.81m)

Landing

Bedroom One

13' 1" x 8' 10" (4.00m x 2.68m)

Bedroom Two

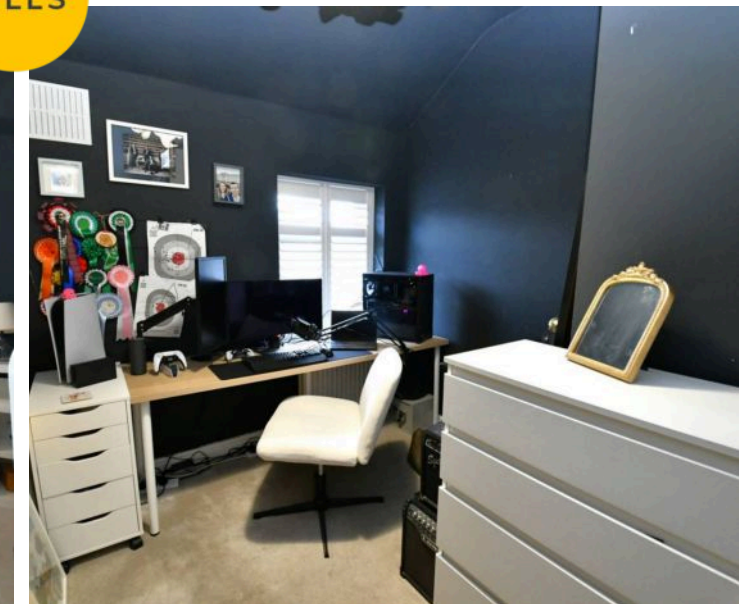
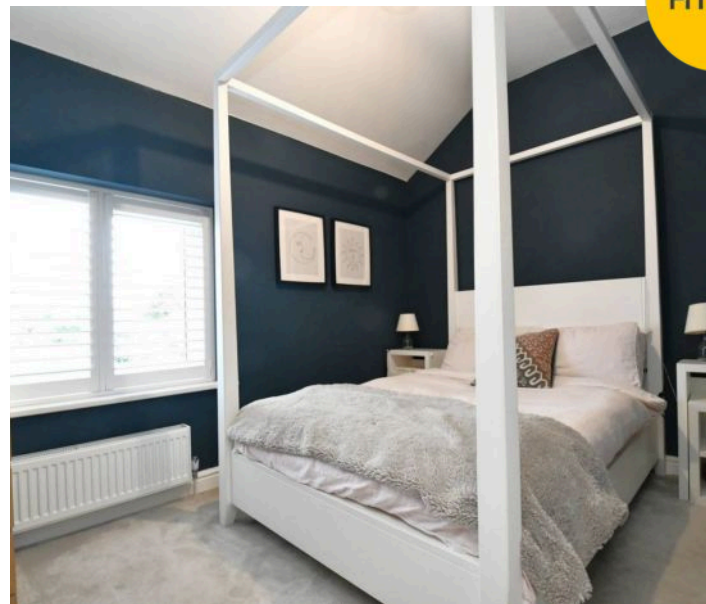
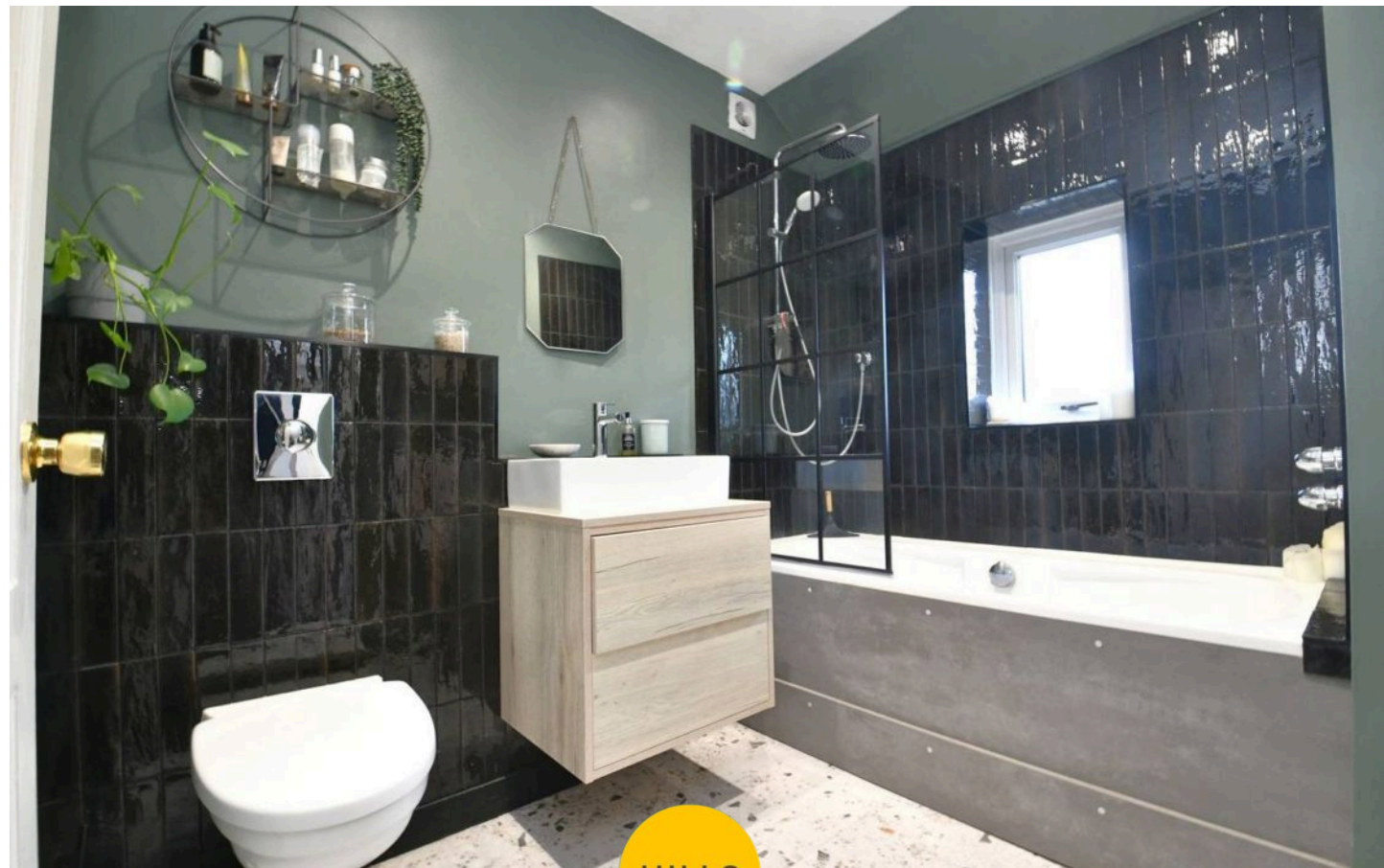
10' 3" x 8' 8" (3.12m x 2.65m)

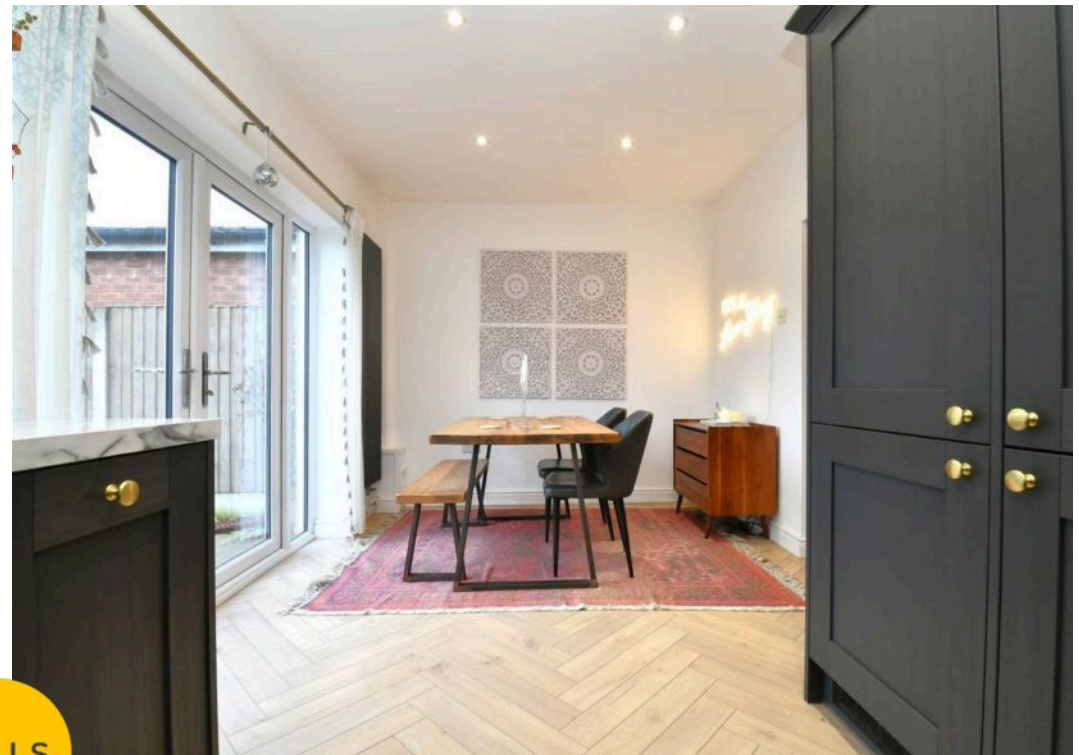
Bedroom Three

10' 2" x 8' 1" (3.10m x 2.47m)

Bathroom

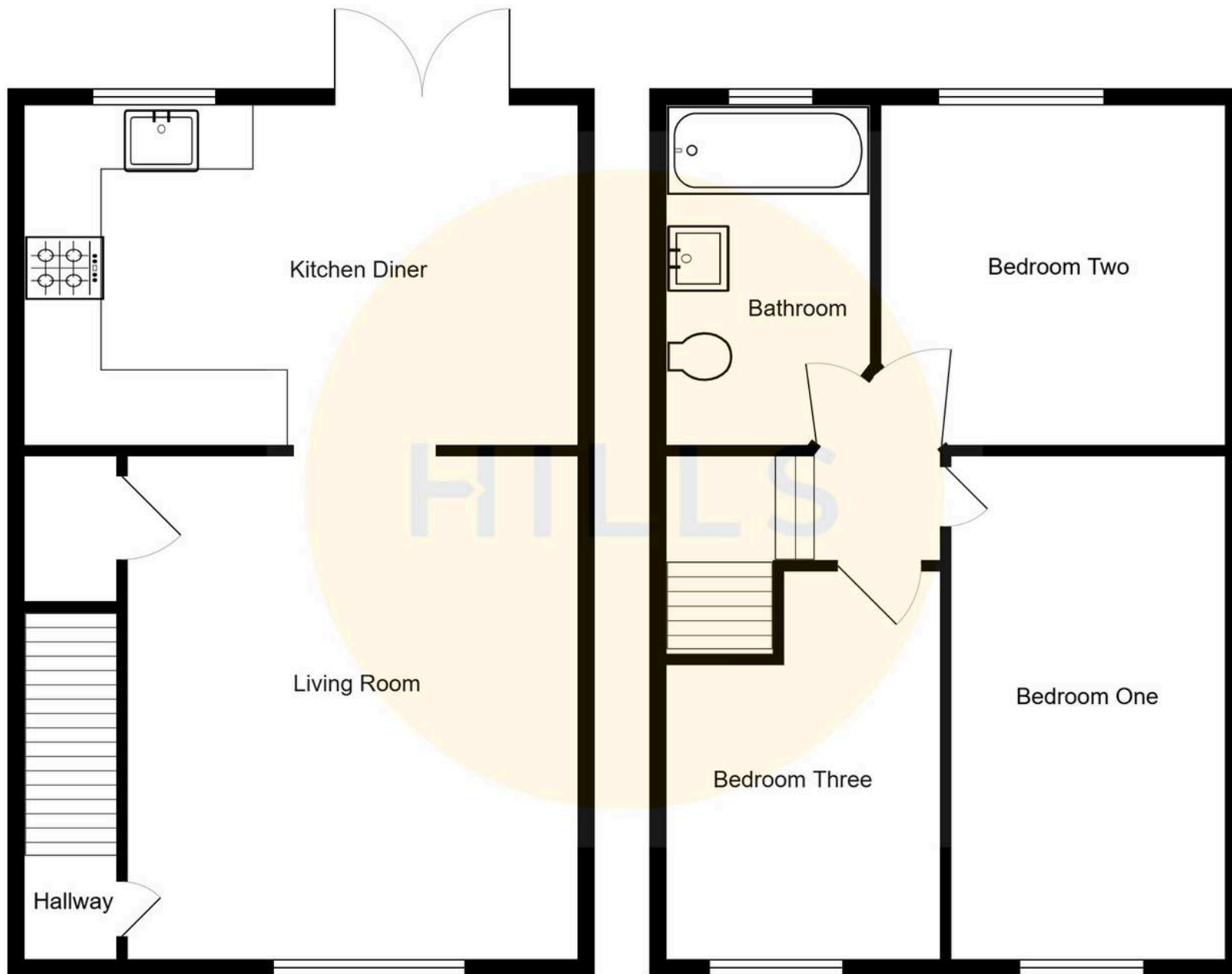
8' 6" x 6' 8" (2.59m x 2.02m)





HILLS







Hills | Salfords Estate Agent

Hills Residential, Sentinel House Albert Street – M30 0SS

0161 707 4900

sales@hills.agency

www.hills.agency/



By law, we are required to conduct anti-money laundering checks on all potential buyers and sellers. In line with HMRC guidelines, our trusted partner, Coadjute, will securely manage these checks on our behalf. A non-refundable fee of £45 + VAT per person will apply, and Coadjute will handle the payment. Once an offer is accepted, Coadjute will send a secure link for you to complete the biometric checks. These checks must be completed before we can send the memorandum of sale to all parties. PLEASE NOTE: The Agent has not tested any equipment, fixtures, fittings or services so cannot verify that they are in working order or fit for the purpose. References to the properties tenure are based on information supplied by the seller. You are advised to check the availability of this property before travelling any distance to view. Every effort has been made to ensure these particulars are correct and not misleading but their accuracy is not guaranteed nor do they form part of any contract.