



Garrett Meadow, Tyldesley

Manchester



£375,000



# 68 Garrett Meadow

Tyldesley, Manchester

Modern Four Bedroom Detached Property Located on the Popular Bridgewater View Development, Close to the Guided Busway and Boasting a Large, Bright Kitchen Diner!

Council Tax band: E

Tenure: Freehold

- Modern Four Bedroom Detached Property Located on a Popular Development
- Spacious Family Lounge and a Downstairs W/C
- Large, Modern Kitchen Diner Complete with Patio Doors to the Rear and a Utility Cupboard
- Four Well-Proportioned Bedrooms
- Stylish Three-Piece Ensuite Shower Room to the Main Bedroom
- Driveway to the Side Providing Ample Off-Road Parking
- Well-Presented Garden to the Front and a Large, low-Maintenance Garden to the Rear
- Within Walking Distance of Local Amenities, Including a Nursery, Gym and a Supermarket
- Just a Short Walk from the Guided Busway and Within Easy Access of the A580, Providing Links to Manchester City Centre and Warrington
- Within Walking Distance of the Outstanding Garrett Hall Primary School



HILLS



## Hallway

### Downstairs W/C

7' 1" x 3' 5" (2.16m x 1.05m)

### Lounge

16' 6" x 11' 2" (5.02m x 3.40m)

### Kitchen Diner

19' 2" x 14' 8" (5.84m x 4.47m)

### Utility Cupboard

3' 0" x 3' 0" (0.91m x 0.91m)

## Landing

### Bedroom One

17' 4" x 10' 2" (5.29m x 3.11m)

### Ensuite

6' 6" x 4' 4" (1.99m x 1.31m)

### Bedroom Two

11' 4" x 9' 9" (3.46m x 2.98m)

### Bedroom Three

9' 1" x 8' 2" (2.78m x 2.49m)

### Bedroom Four

8' 8" x 7' 1" (2.65m x 2.16m)

### Bathroom

6' 4" x 5' 7" (1.92m x 1.70m)

### Externally

Benefits from a driveway to the side that provides ample off-road parking. Well-presented garden to the front with laid-to-lawn grass and mature bushes. To the rear, a generously-sized garden complete with artificial grass and paving





## Hallway

### Downstairs W/C

7' 1" x 3' 5" (2.16m x 1.05m)

### Lounge

16' 6" x 11' 2" (5.02m x 3.40m)

### Kitchen Diner

19' 2" x 14' 8" (5.84m x 4.47m)

### Utility Cupboard

3' 0" x 3' 0" (0.91m x 0.91m)

## Landing

### Bedroom One

17' 4" x 10' 2" (5.29m x 3.11m)

### Ensuite

6' 6" x 4' 4" (1.99m x 1.31m)

### Bedroom Two

11' 4" x 9' 9" (3.46m x 2.98m)

### Bedroom Three

9' 1" x 8' 2" (2.78m x 2.49m)

### Bedroom Four

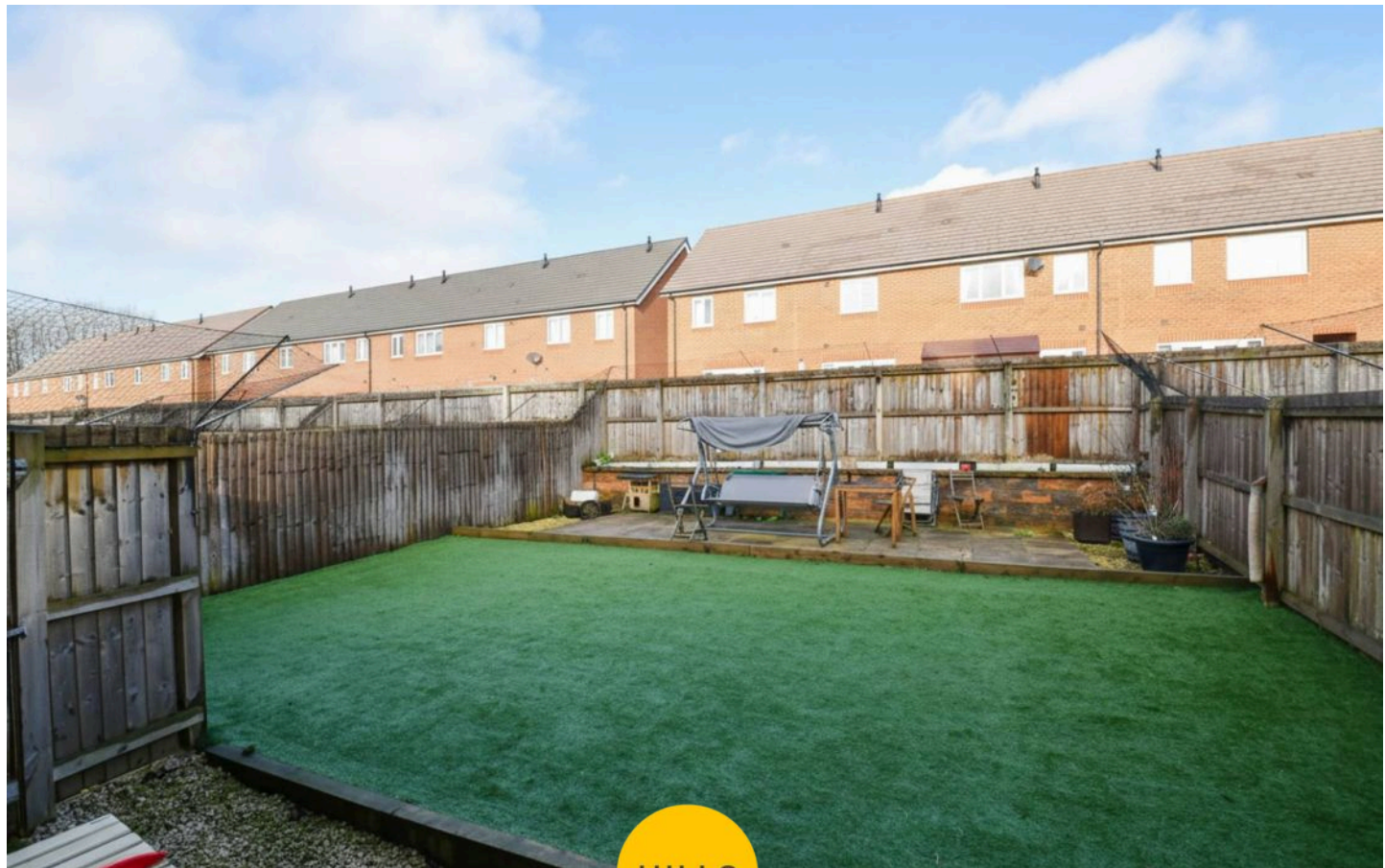
8' 8" x 7' 1" (2.65m x 2.16m)

### Bathroom

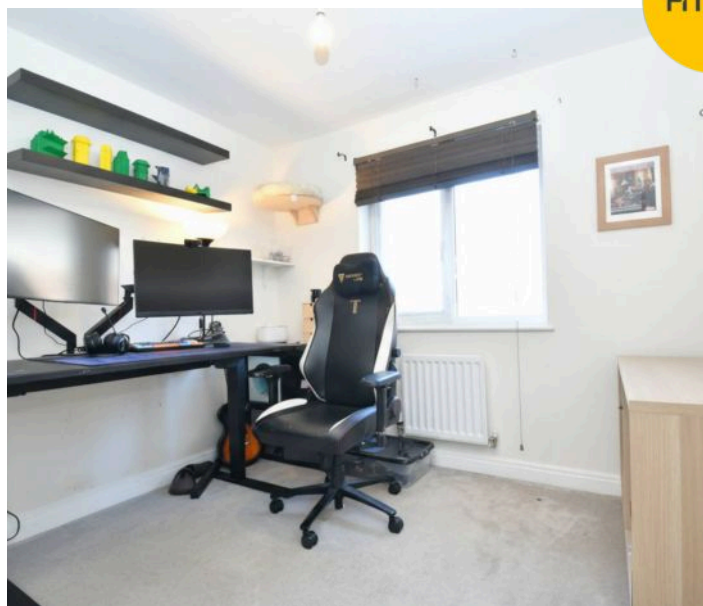
6' 4" x 5' 7" (1.92m x 1.70m)

## Externally

Benefits from a driveway to the side that provides ample off-road parking. Well-presented garden to the front with laid-to-lawn grass and mature bushes. To the rear, a generously-sized garden complete with artificial grass and paving



HILLS







HILLS









## Hills | Salfords Estate Agent

Hills Residential, Sentinel House Albert Street – M30 0SS

0161 707 4900

[sales@hills.agency](mailto:sales@hills.agency)

[www.hills.agency/](http://www.hills.agency/)



By law, we are required to conduct anti-money laundering checks on all potential buyers and sellers. In line with HMRC guidelines, our trusted partner, Coadjute, will securely manage these checks on our behalf. A non-refundable fee of £45 + VAT per person will apply, and Coadjute will handle the payment. Once an offer is accepted, Coadjute will send a secure link for you to complete the biometric checks. These checks must be completed before we can send the memorandum of sale to all parties. PLEASE NOTE: The Agent has not tested any equipment, fixtures, fittings or services so cannot verify that they are in working order or fit for the purpose. References to the properties tenure are based on information supplied by the seller. You are advised to check the availability of this property before travelling any distance to view. Every effort has been made to ensure these particulars are correct and not misleading but their accuracy is not guaranteed nor do they form part of any contract.