



Duchy Road

Salford

HILLS

In Excess of £230,000



# Duchy Road

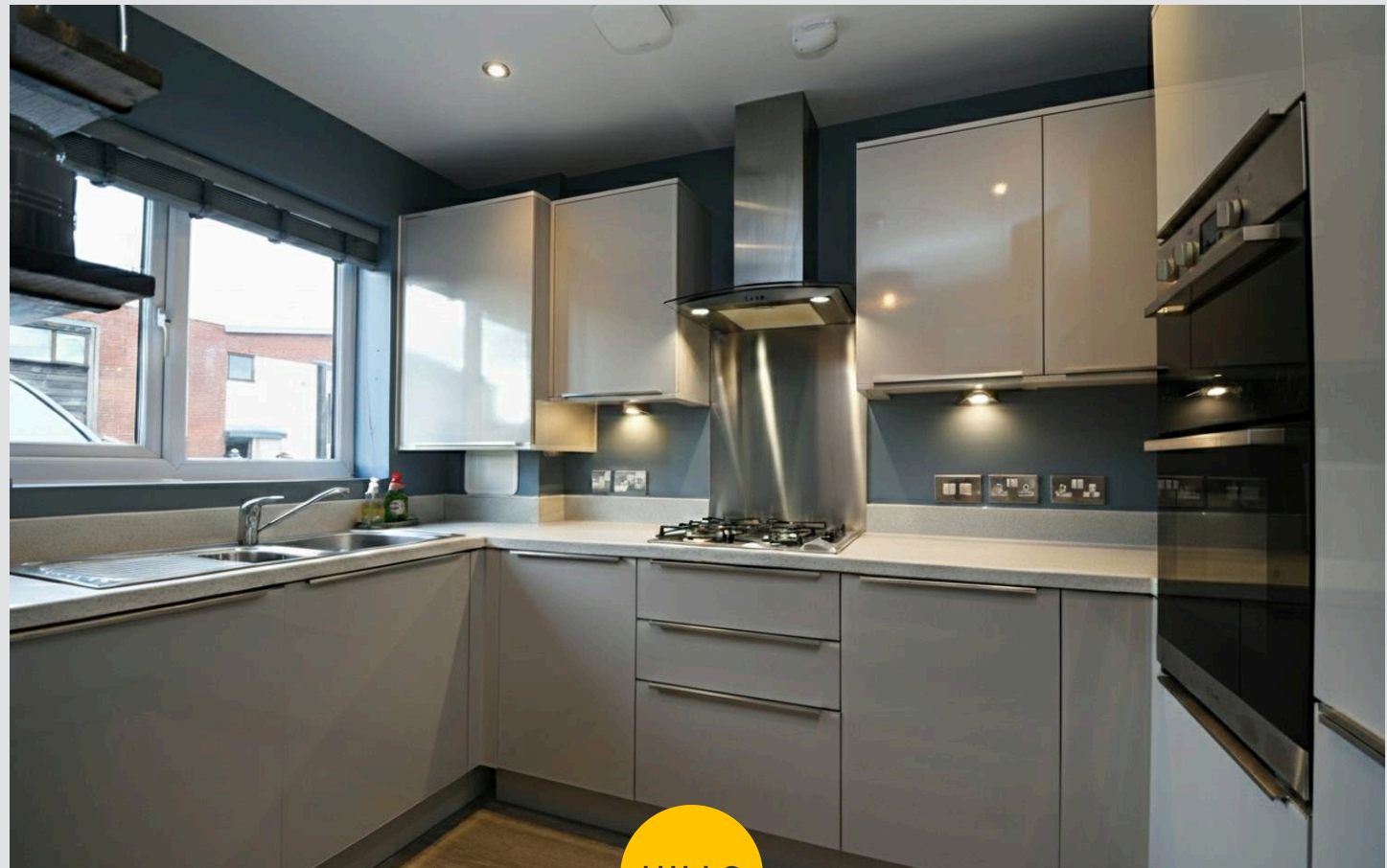
Salford

Welcome to this SPACIOUS TWO BEDROOM SEMI-DETACHED PROPERTY, boasting a MODERN FITTED KITCHEN and BATHROOM!

Council Tax band: A

Tenure: Leasehold

- Spacious two bedroom semi-detached property
- Contemporary fitted kitchen
- Stunning lounge diner complete with patio doors to the rear garden
- Modern three-piece bathroom suite and downstairs W.C.
- Driveway to the front for off-road parking
- Two double bedrooms
- Low maintenance rear garden complete with paving and turfed lawn
- Ample storage throughout
- Gas Central heating and double glazed throughout
- Within easy access of excellent transport links into Salford Quays, Media City and Manchester City Centre!



HILLS



### Entrance Hallway

### Lounge

18' 5" x 13' 11" (5.62m x 4.24m)

### Kitchen

6' 10" x 10' 4" (2.08m x 3.16m)

### Downstairs W.C.

3' 8" x 6' 6" (1.12m x 1.98m)

### Landing

### Bedroom One

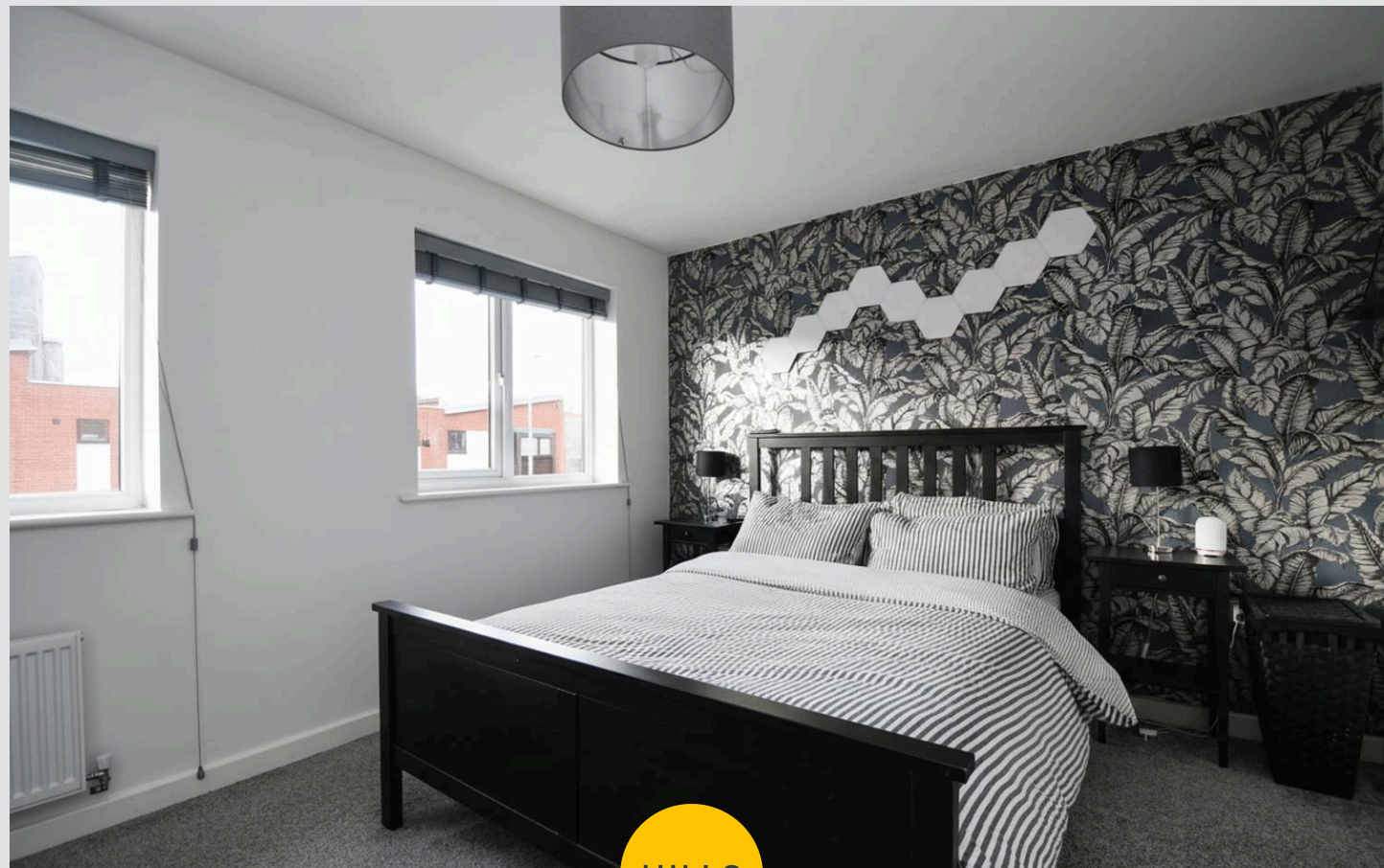
10' 9" x 13' 9" (3.28m x 4.20m)

### Bedroom Two

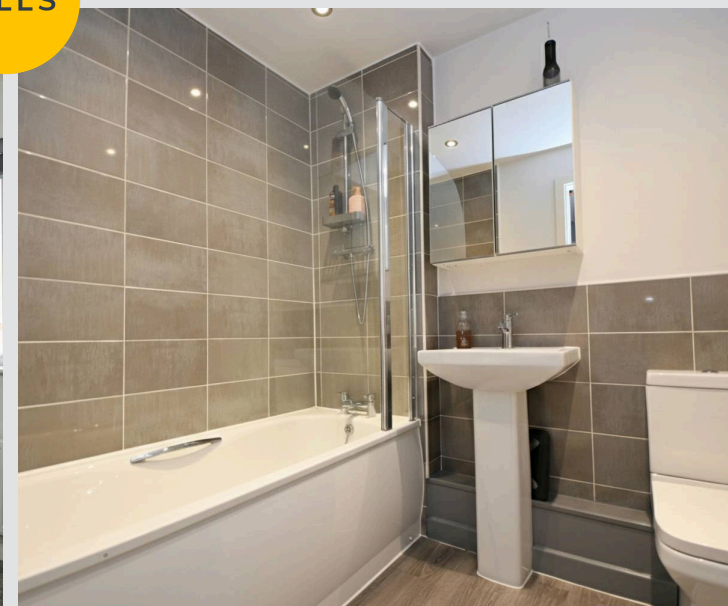
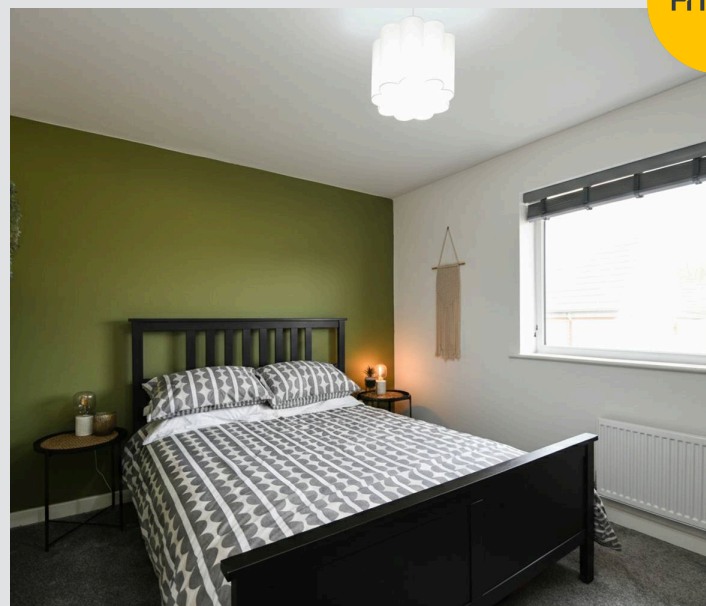
10' 8" x 13' 11" (3.24m x 4.23m)

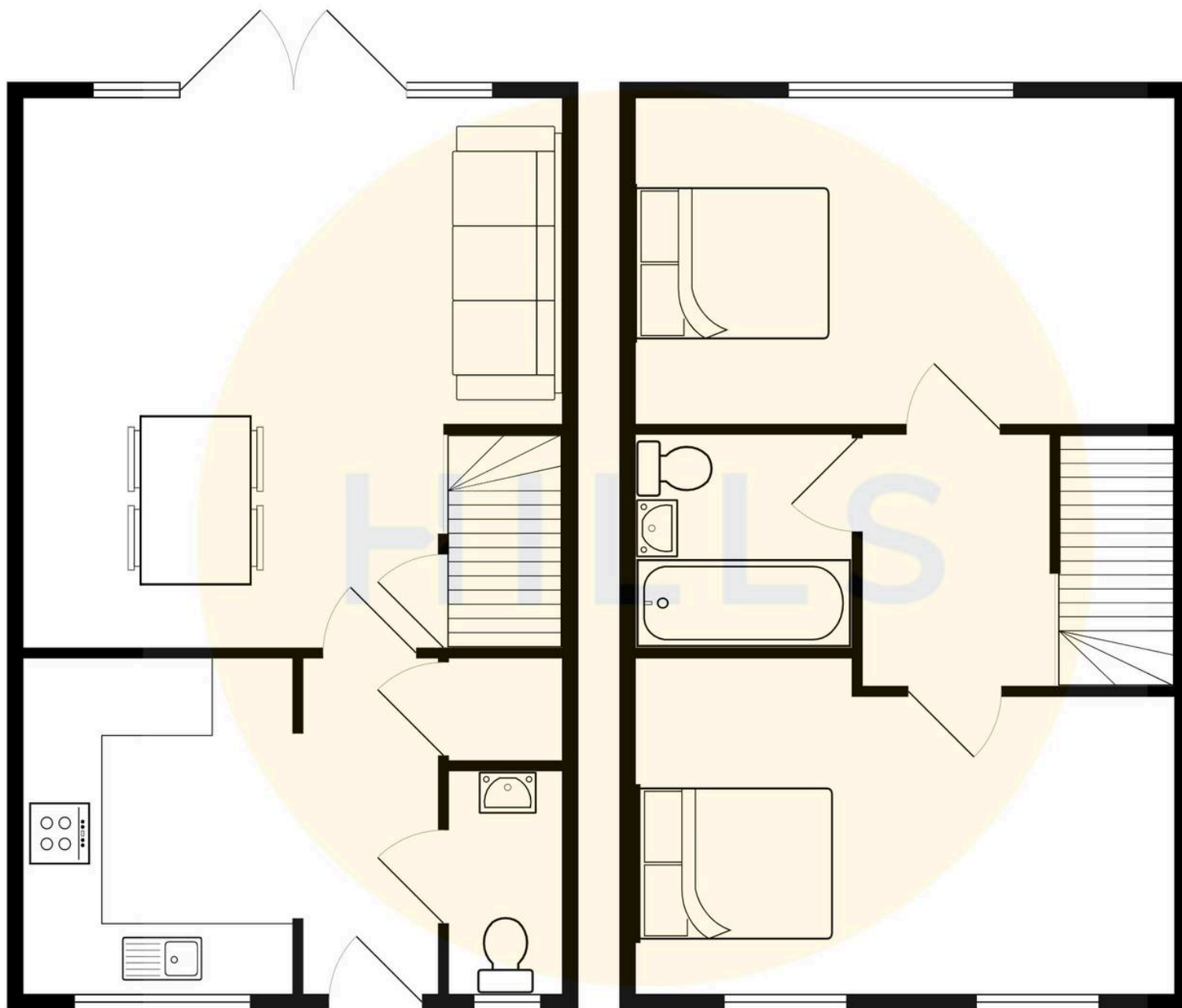
### Bathroom

6' 8" x 7' 2" (2.04m x 2.19m)



HILLS









## Hills | Salfords Estate Agent

Hills Residential, Sentinel House Albert Street – M30 0SS

0161 707 4900

[sales@hills.agency](mailto:sales@hills.agency)

[www.hills.agency/](http://www.hills.agency/)



By law, we are required to conduct anti-money laundering checks on all potential buyers and sellers. In line with HMRC guidelines, our trusted partner, Coadjute, will securely manage these checks on our behalf. A non-refundable fee of £45 + VAT per person will apply, and Coadjute will handle the payment. Once an offer is accepted, Coadjute will send a secure link for you to complete the biometric checks. These checks must be completed before we can send the memorandum of sale to all parties. PLEASE NOTE: The Agent has not tested any equipment, fixtures, fittings or services so cannot verify that they are in working order or fit for the purpose. References to the properties tenure are based on information supplied by the seller. You are advised to check the availability of this property before travelling any distance to view. Every effort has been made to ensure these particulars are correct and not misleading but their accuracy is not guaranteed nor do they form part of any contract.