



Avondale Drive

Salford

HILLS

£250,000



# Avondale Drive

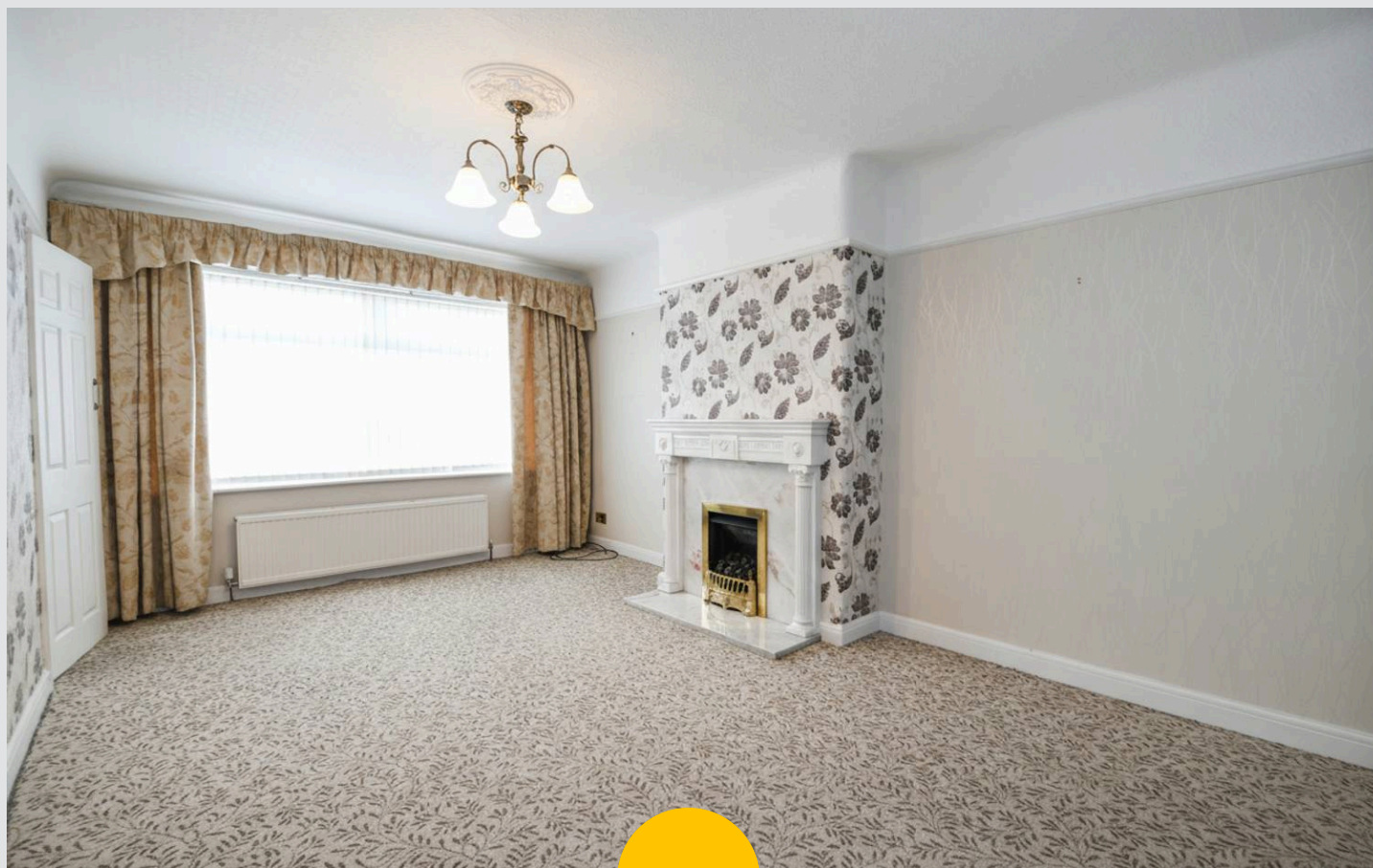
Salford

Situated in a popular family location is this SPACIOUS THREE BEDROOM SEMI-DETACHED FAMILY HOME! Benefitting from a modern kitchen and three generous sized bedrooms, this property is NOT TO BE MISSED!

Council Tax band: B

Tenure: Leasehold

- Three bedroom semi-detached family home coming to the market CHAIN FREE!
- Within walking distance of Salford Royal Hospital
- Spacious family lounge
- Extended fitted kitchen
- Three generous sized bedrooms
- Three piece bathroom suite
- Low maintenance front and rear gardens
- Perfect first time buy!
- Close to several well kept parks, good local schooling and transport links to Salford Quays, Media City and Manchester City Centre
- Early viewing is essential



HILLS





**Entrance Hallway**

7' 10" x 8' 3" (2.39m x 2.51m)

**Lounge**

11' 7" x 17' 11" (3.53m x 5.47m)

**Kitchen**

16' 4" x 8' 6" (4.97m x 2.59m)

**Bedroom One**

11' 6" x 10' 5" (3.50m x 3.18m)

**Bedroom Two**

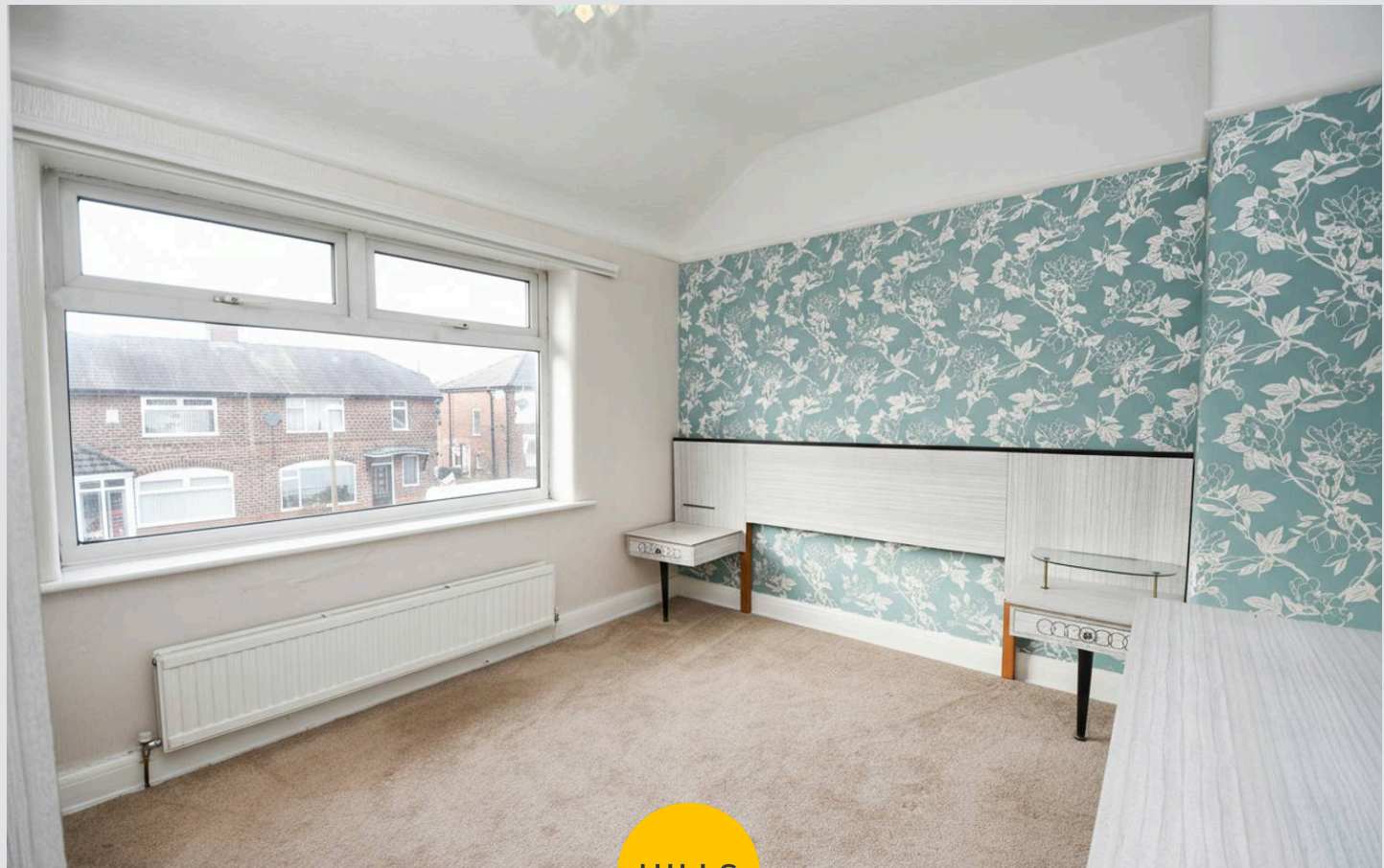
11' 3" x 8' 4" (3.44m x 2.54m)

**Bedro Three**

8' 2" x 8' 1" (2.49m x 2.46m)

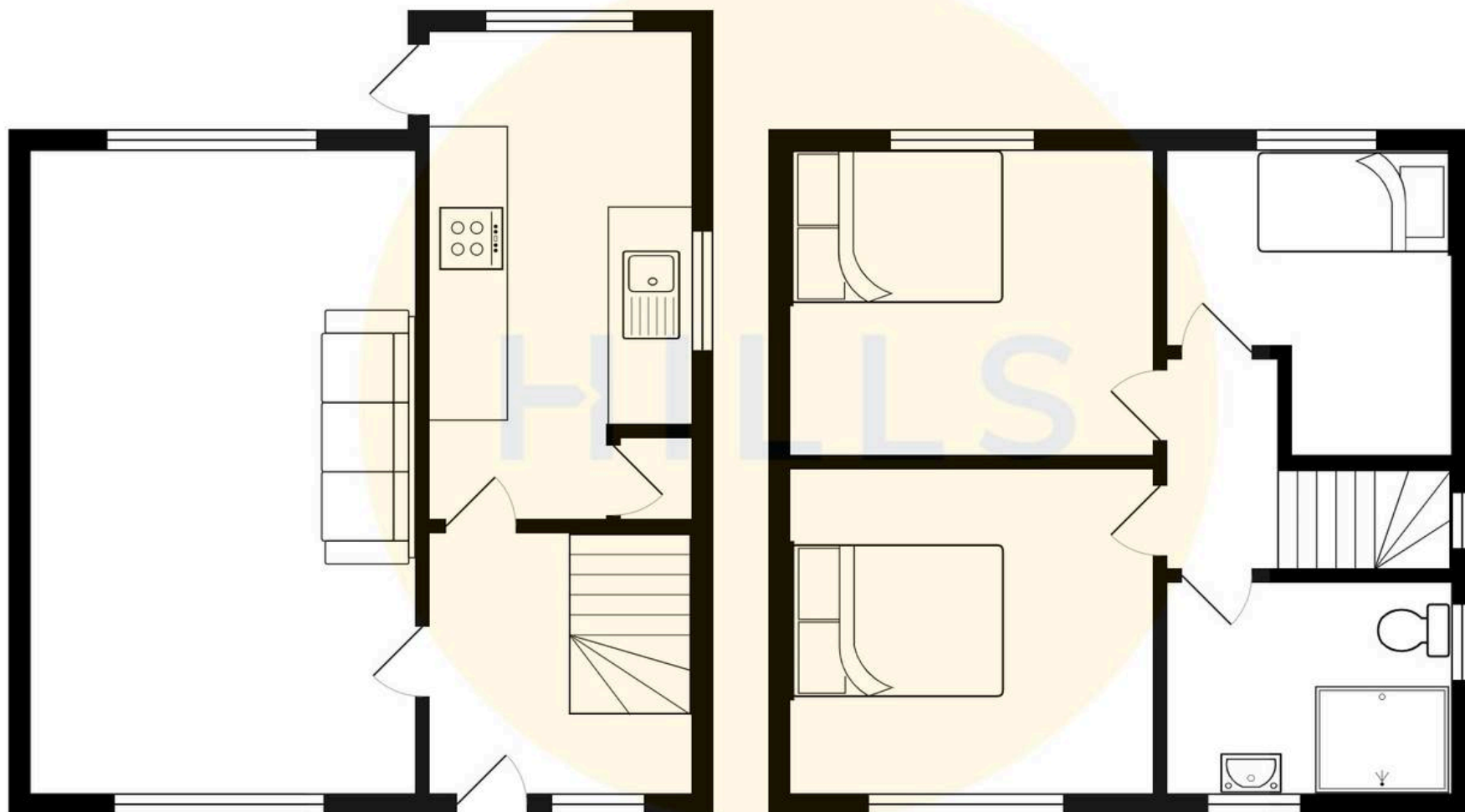
**Bathroom**

6' 4" x 8' 0" (1.94m x 2.45m)



HILLS









## Hills | Salfords Estate Agent

Hills Residential, Sentinel House Albert Street – M30 0SS

0161 707 4900

[sales@hills.agency](mailto:sales@hills.agency)

[www.hills.agency/](http://www.hills.agency/)



By law, we are required to conduct anti-money laundering checks on all potential buyers and sellers. In line with HMRC guidelines, our trusted partner, Coadjute, will securely manage these checks on our behalf. A non-refundable fee of £45 + VAT per person will apply, and Coadjute will handle the payment. Once an offer is accepted, Coadjute will send a secure link for you to complete the biometric checks. These checks must be completed before we can send the memorandum of sale to all parties. PLEASE NOTE: The Agent has not tested any equipment, fixtures, fittings or services so cannot verify that they are in working order or fit for the purpose. References to the properties tenure are based on information supplied by the seller. You are advised to check the availability of this property before travelling any distance to view. Every effort has been made to ensure these particulars are correct and not misleading but their accuracy is not guaranteed nor do they form part of any contract.