



**Worsley Road, Eccles**

Manchester

HILLS

In Excess of **£210,000**



# Worsley Road

Eccles, Manchester

Welcome to this incredible two bedroom end-terraced property featuring spacious rooms and high ceilings! Located between the desirable villages of Worsley and Monton!

Council Tax band: A

- Beautifully presented end-terraced property, perfectly positioned between Worsley and Monton Villages!
- Spacious lounge and second reception room
- Modern fitted kitchen
- Two double bedrooms
- Contemporary four-piece bathroom suite
- Low maintenance rear garden
- Off-road parking to the rear
- Surrounded by Excellent Amenities and Well Served by Brilliant Transport Links
- Perfect First Time Buy or Family Home Located within Catchment for Sought After Schooling



HILLS



### Entrance Hallway

### Lounge

14' 0" x 16' 2" (4.26m x 4.93m)

### Dining Room

12' 2" x 14' 11" (3.72m x 4.55m)

### Kitchen

11' 1" x 7' 2" (3.37m x 2.19m)

### Landing

### Bedroom One

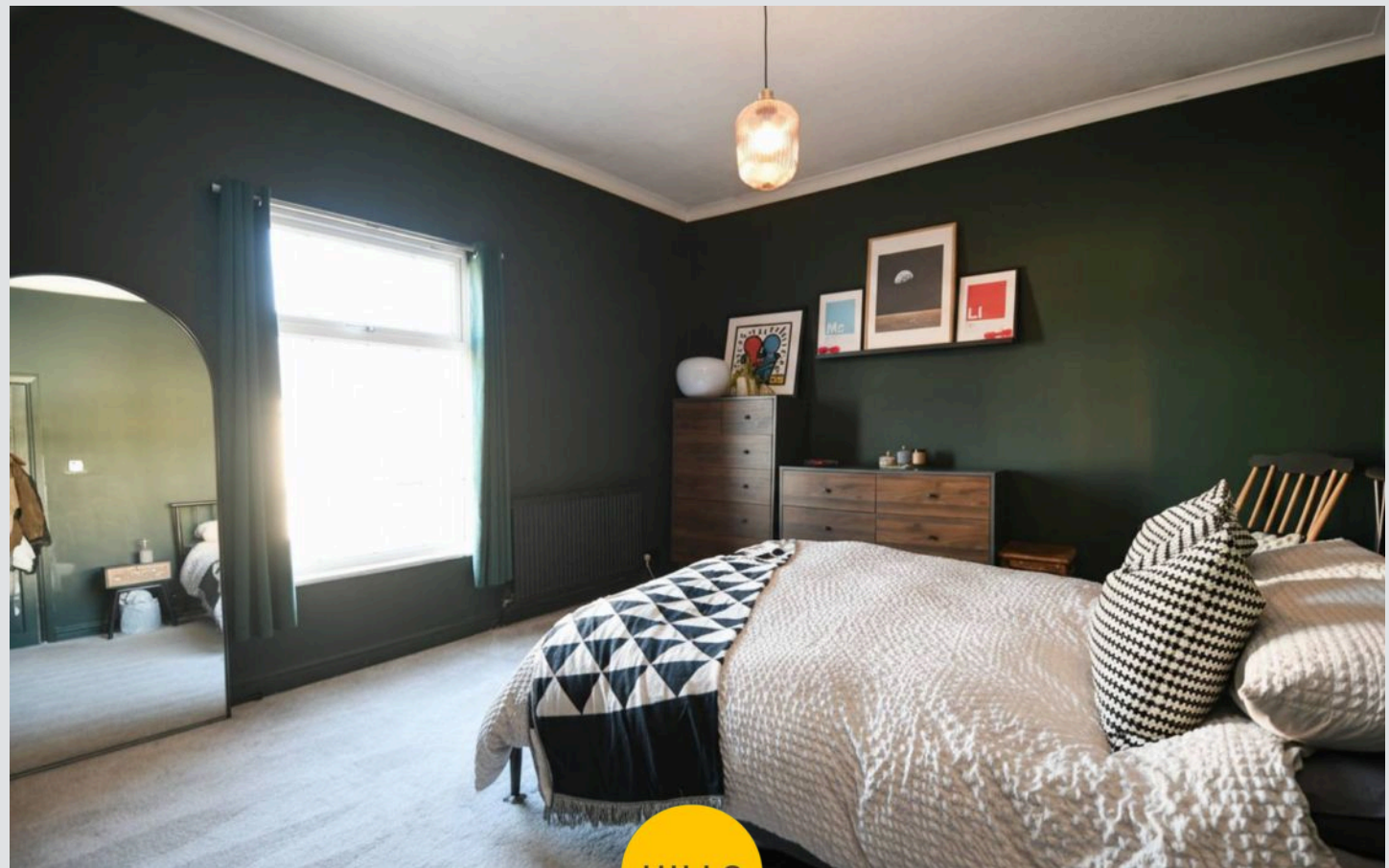
12' 4" x 14' 1" (3.75m x 4.28m)

### Bedroom Two

10' 1" x 12' 9" (3.07m x 3.88m)

### Bathroom

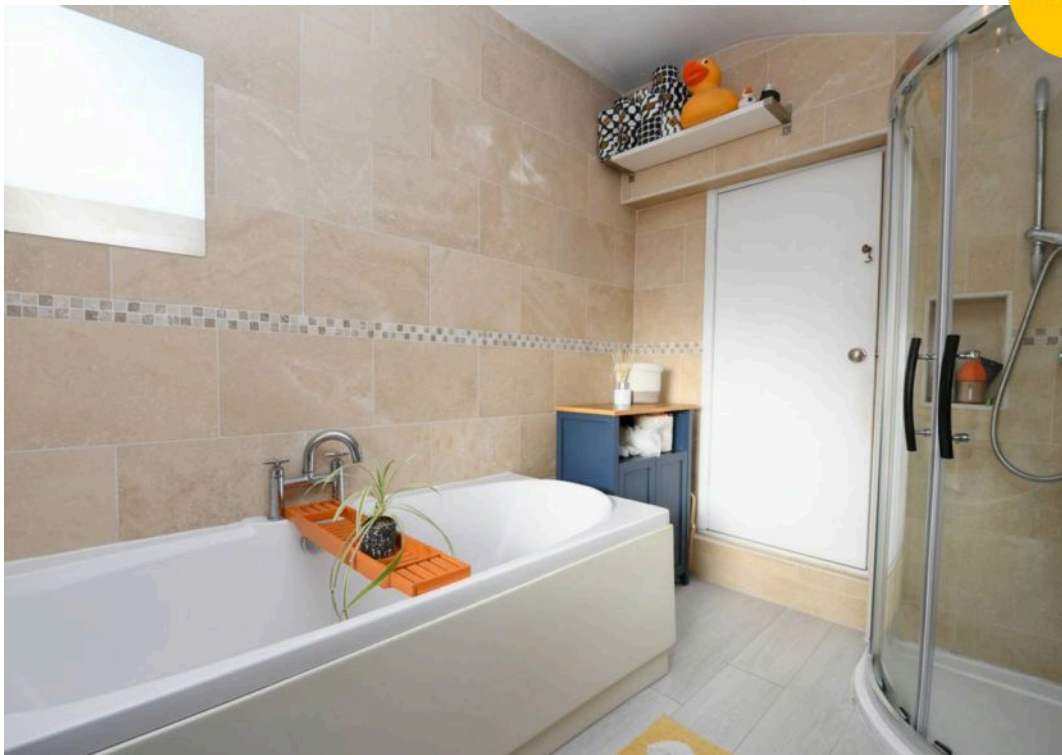
10' 3" x 7' 0" (3.12m x 2.13m)

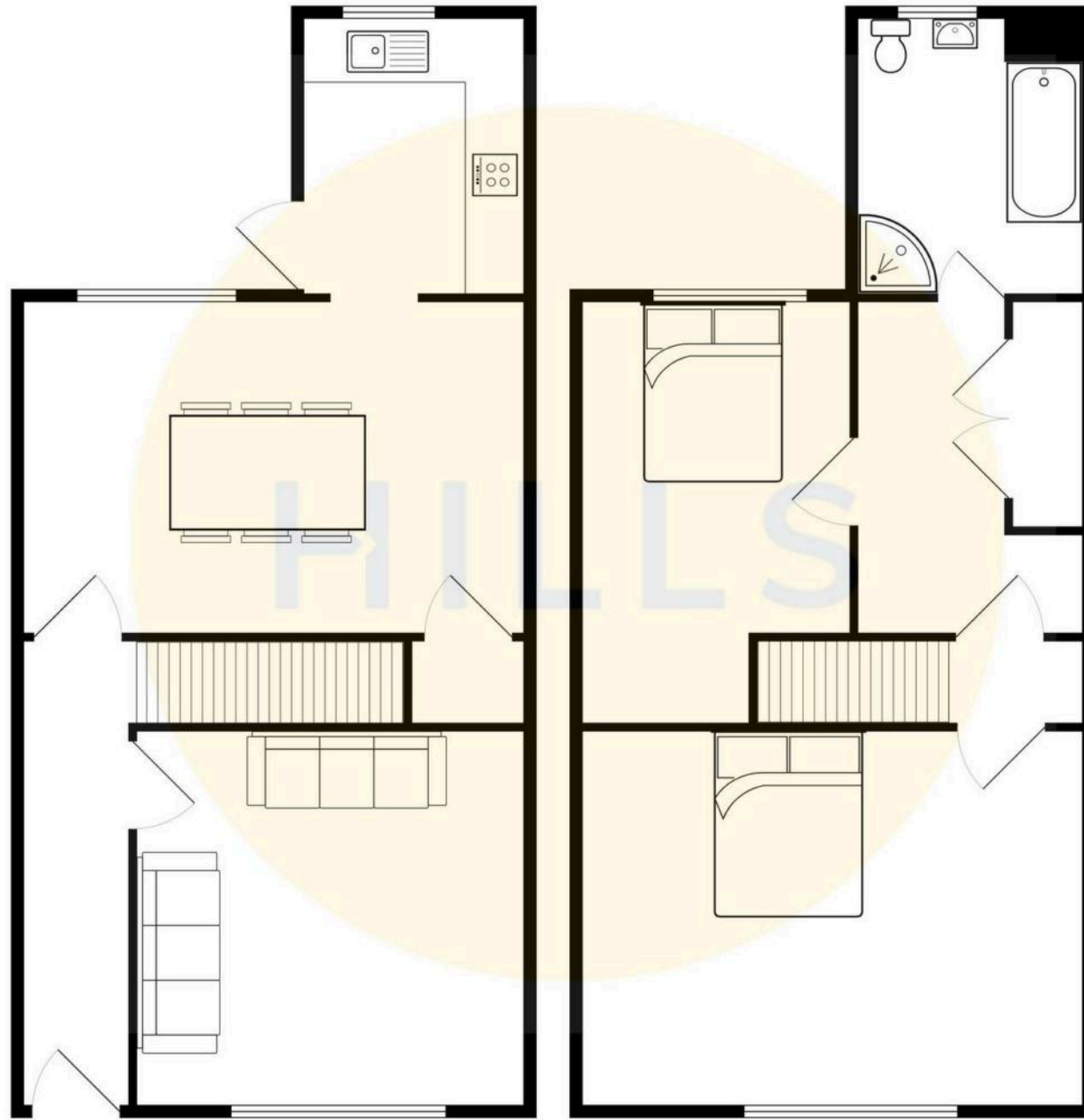






HILLS









## Hills | Salfords Estate Agent

Hills Residential, Sentinel House Albert Street – M30 0SS

0161 707 4900

[sales@hills.agency](mailto:sales@hills.agency)

[www.hills.agency/](http://www.hills.agency/)



By law, we are required to conduct anti-money laundering checks on all potential buyers and sellers. In line with HMRC guidelines, our trusted partner, Coadjute, will securely manage these checks on our behalf. A non-refundable fee of £45 + VAT per person will apply, and Coadjute will handle the payment. Once an offer is accepted, Coadjute will send a secure link for you to complete the biometric checks. These checks must be completed before we can send the memorandum of sale to all parties. PLEASE NOTE: The Agent has not tested any equipment, fixtures, fittings or services so cannot verify that they are in working order or fit for the purpose. References to the properties tenure are based on information supplied by the seller. You are advised to check the availability of this property before travelling any distance to view. Every effort has been made to ensure these particulars are correct and not misleading but their accuracy is not guaranteed nor do they form part of any contract.