

Graham Road

Salford

HILLS

In Excess of £240,000

Graham Road

Salford

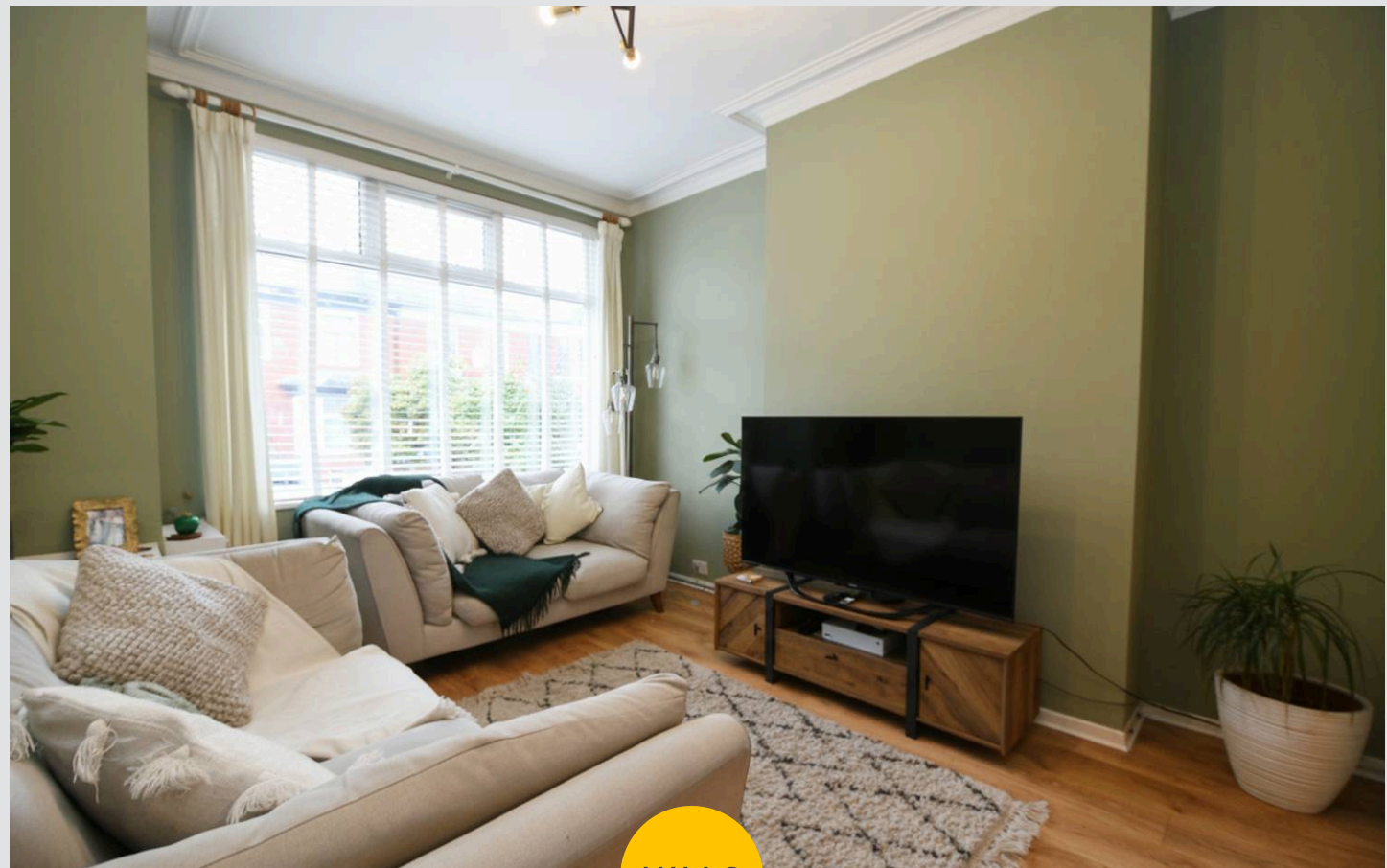
****WALKING DISTANCE TO SALFORD ROYAL HOSPITAL****

TAKE A LOOK at this STUNNING three bedroom terraced property, situated in a popular area close to Light Oaks Park and Schooling!

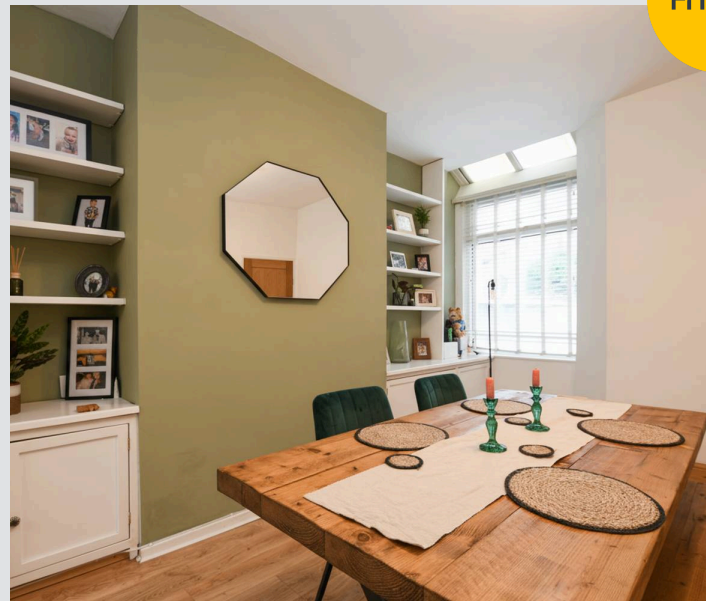
Council Tax band: B

Tenure: Leasehold

- Stunning three bedroom bay-fronted home in a popular location
- Stunning three-piece bathroom suite
- Modern fitted 13ft kitchen
- Two large open plan reception rooms
- Great location, close to excellent local schools, amenities, well-kept public parks and transport links
- Three generous sized bedrooms
- Early viewing highly advised
- Fully gas central heated and double glazed
- Well-kept low maintenance front and rear gardens



HILLS



Entrance Hallway

Lounge

13' 4" x 11' 5" (4.06m x 3.48m)

Dining Room

14' 4" x 11' 5" (4.37m x 3.48m)

Kitchen

13' 9" x 8' 9" (4.19m x 2.66m)

Landing

Bedroom One

14' 7" x 10' 9" (4.44m x 3.27m)

Bedroom Two

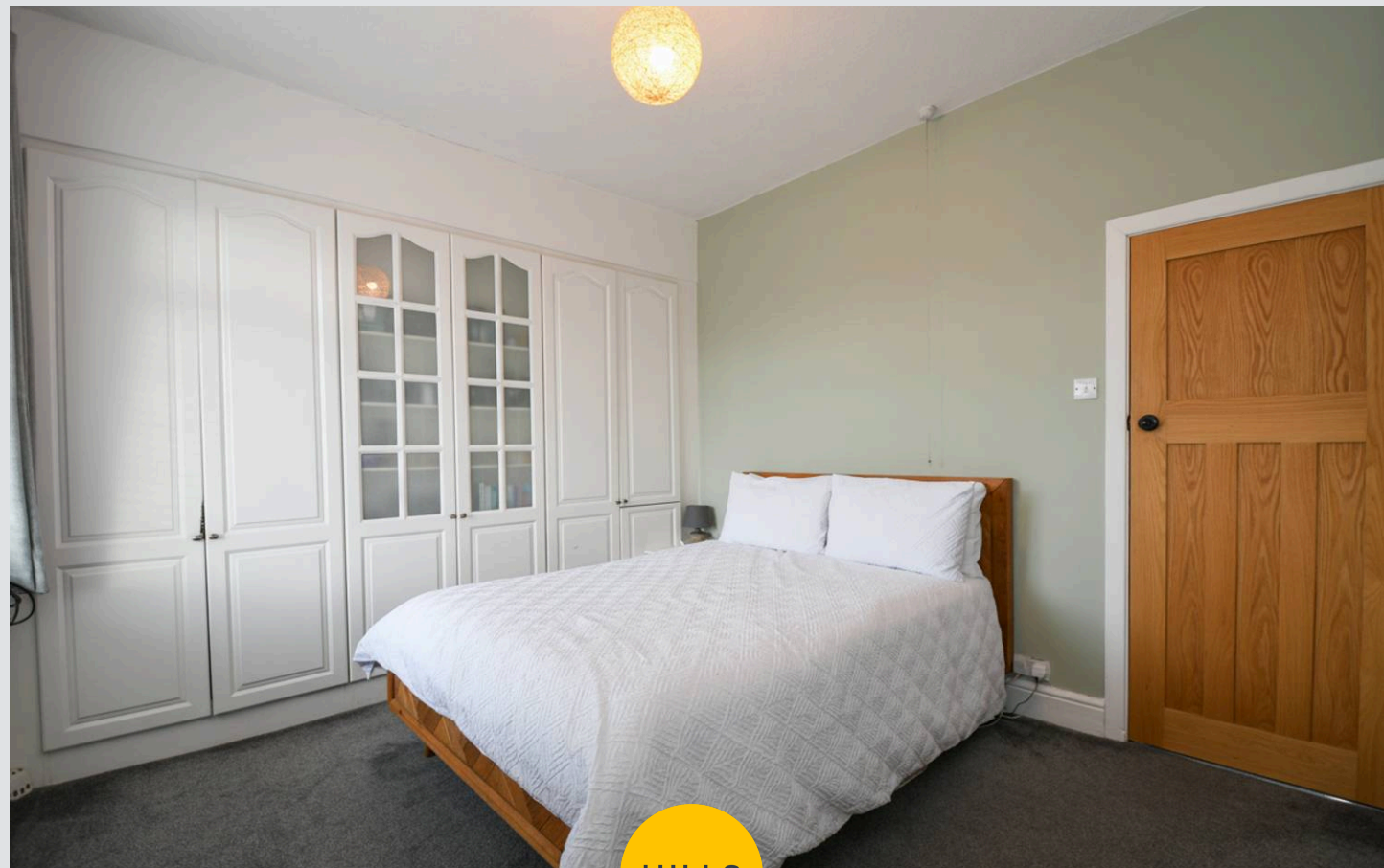
12' 6" x 9' 3" (3.81m x 2.82m)

Bedroom Three

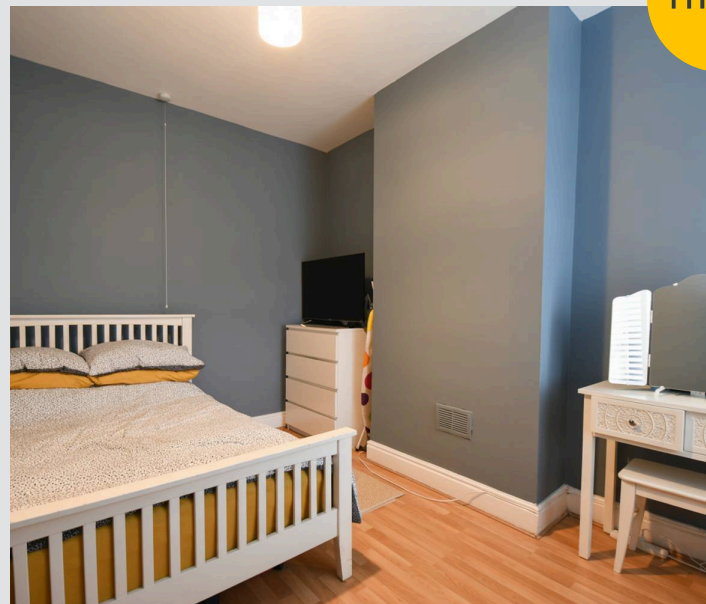
9' 2" x 7' 8" (2.79m x 2.34m)

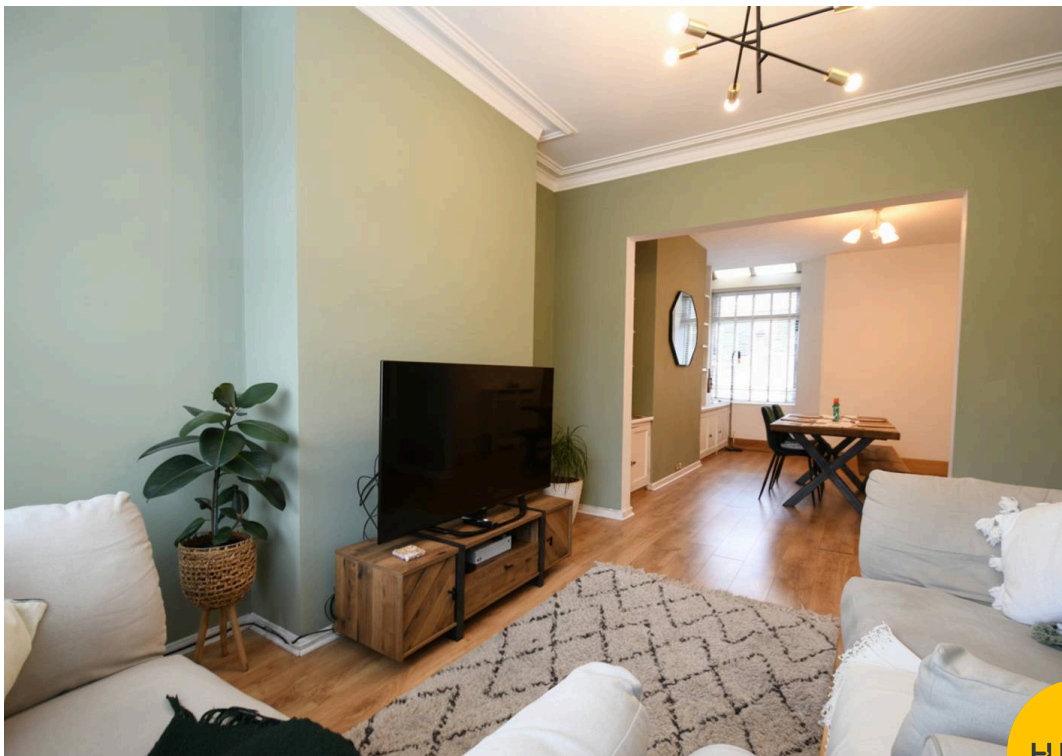
Bathroom

6' 2" x 5' 5" (1.88m x 1.65m)

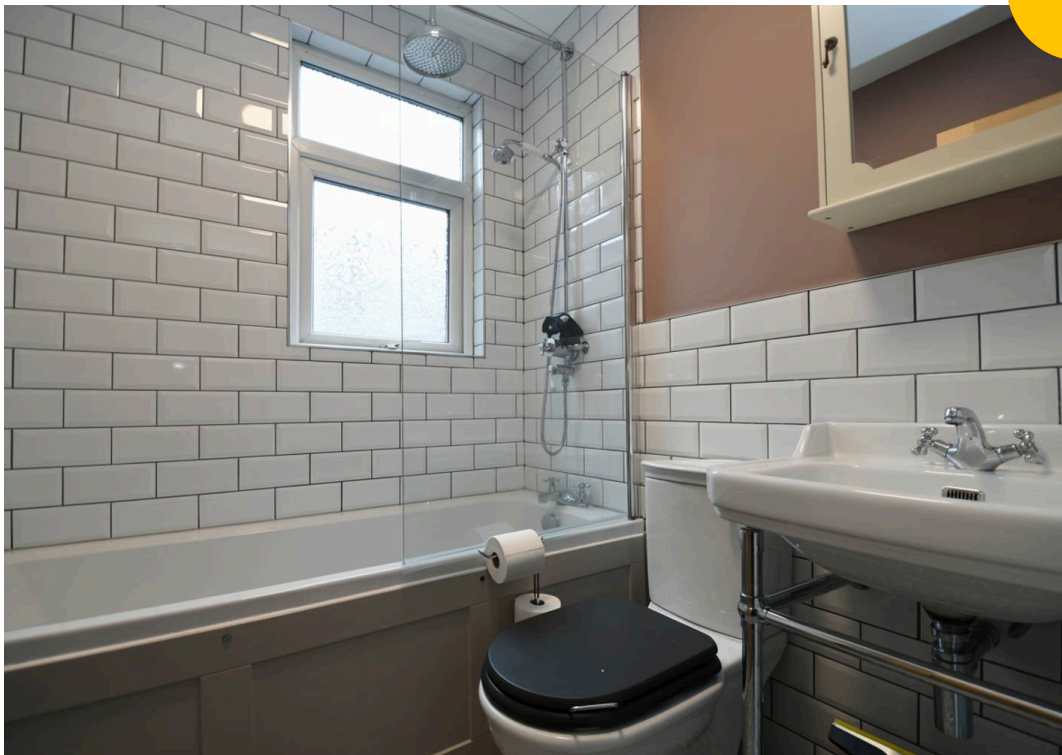


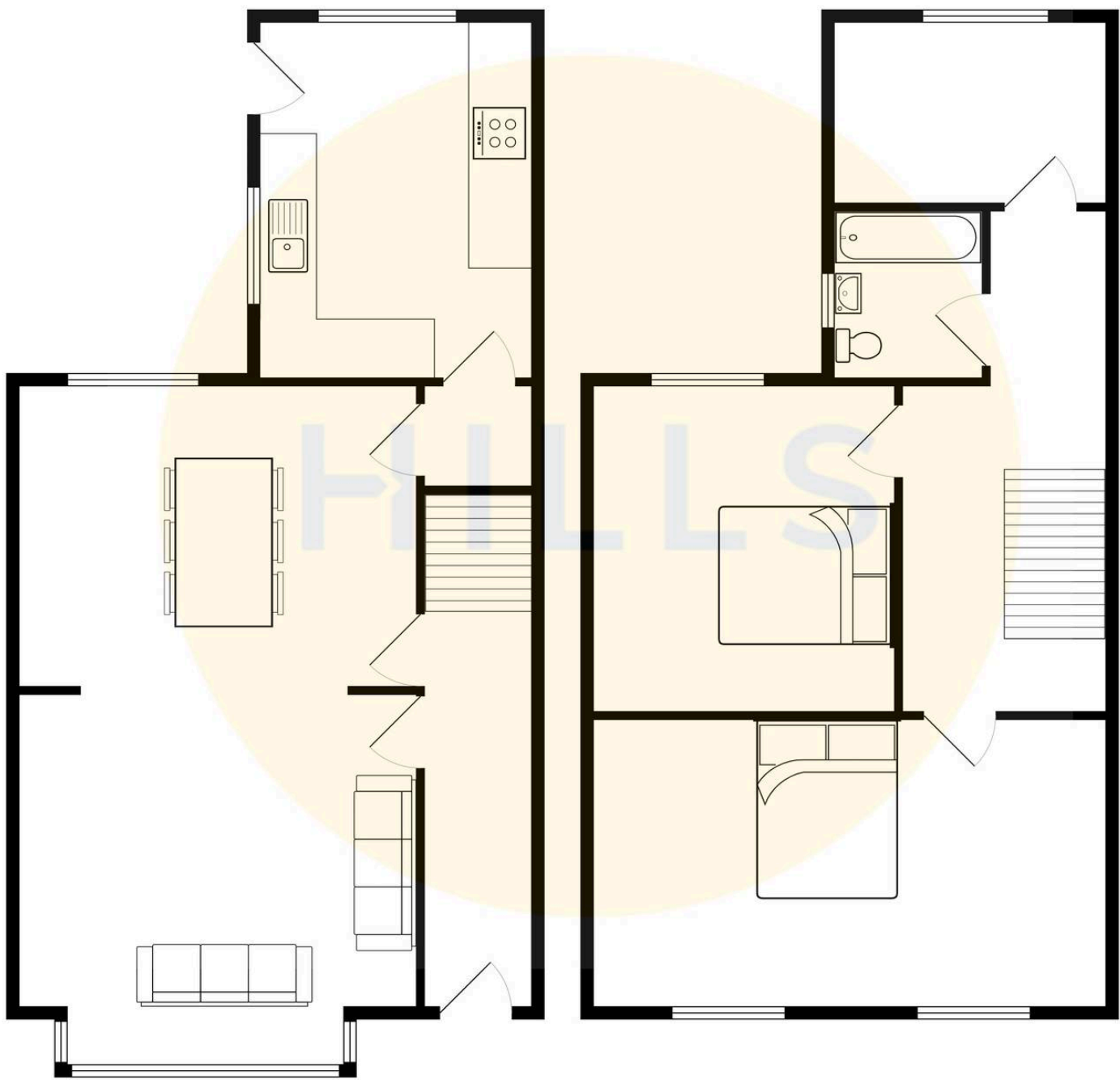
HILLS





HILLS







Hills | Salfords Estate Agent

Hills Residential, Sentinel House Albert Street – M30 0SS

0161 707 4900

sales@hills.agency

www.hills.agency/



By law, we are required to conduct anti-money laundering checks on all potential buyers and sellers. In line with HMRC guidelines, our trusted partner, Coadjute, will securely manage these checks on our behalf. A non-refundable fee of £45 + VAT per person will apply, and Coadjute will handle the payment. Once an offer is accepted, Coadjute will send a secure link for you to complete the biometric checks. These checks must be completed before we can send the memorandum of sale to all parties. PLEASE NOTE: The Agent has not tested any equipment, fixtures, fittings or services so cannot verify that they are in working order or fit for the purpose. References to the properties tenure are based on information supplied by the seller. You are advised to check the availability of this property before travelling any distance to view. Every effort has been made to ensure these particulars are correct and not misleading but their accuracy is not guaranteed nor do they form part of any contract.