

Blantyre Street, Eccles

Manchester

HILLS

In Excess of **£200,000**

28 Blantyre Street

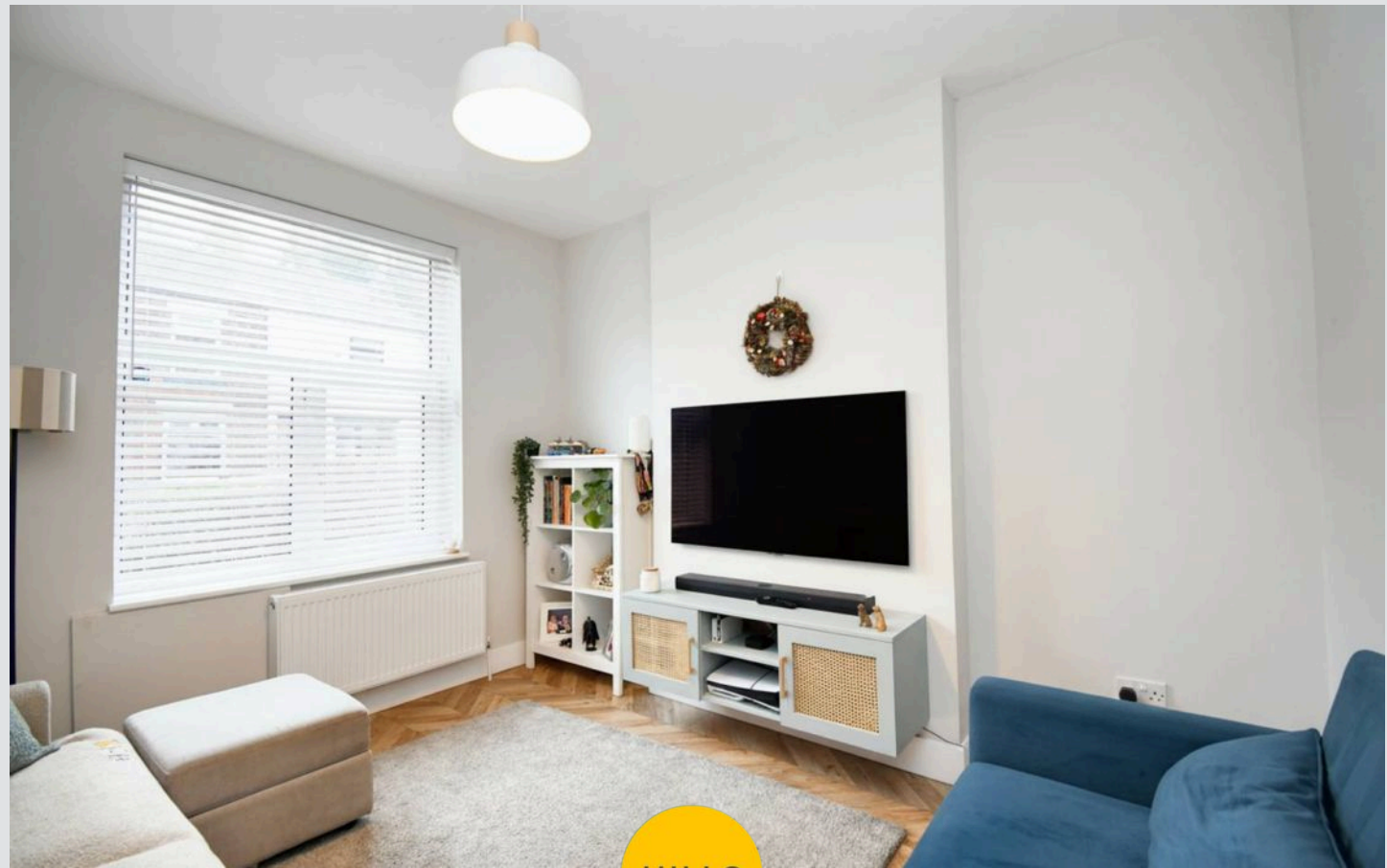
Eccles, Manchester

Fully renovated two-bedroom end terrace in a prime spot between Monton and Worsley. Stylish, move-in ready, with modern kitchen, utility, two doubles, and excellent transport links.

Council Tax band: A

Tenure: Freehold

- Beautifully Presented End Terrace Property Perfectly Positioned between both Monton & Worsley Villages
- Spacious Lounge
- Stunning Fitted Kitchen and Dining Space with Integrated Appliances
- Modern Three Piece Shower Room
- Two Double Bedrooms
- Ample Storage Throughout
- Low Maintenance Courtyard with Indian Stone Paving
- Garden to the Rear with Detached Garage
- Surrounded by Excellent Amenities and Brilliant Transport Links



HILLS



Lounge

11' 7" x 10' 1" (3.53m x 3.07m)

Kitchen & Dining Space

11' 9" x 11' 0" (3.58m x 3.35m)

Utility

7' 6" x 4' 4" (2.29m x 1.32m)

Shower Room

7' 9" x 7' 1" (2.36m x 2.16m)

Bedroom One

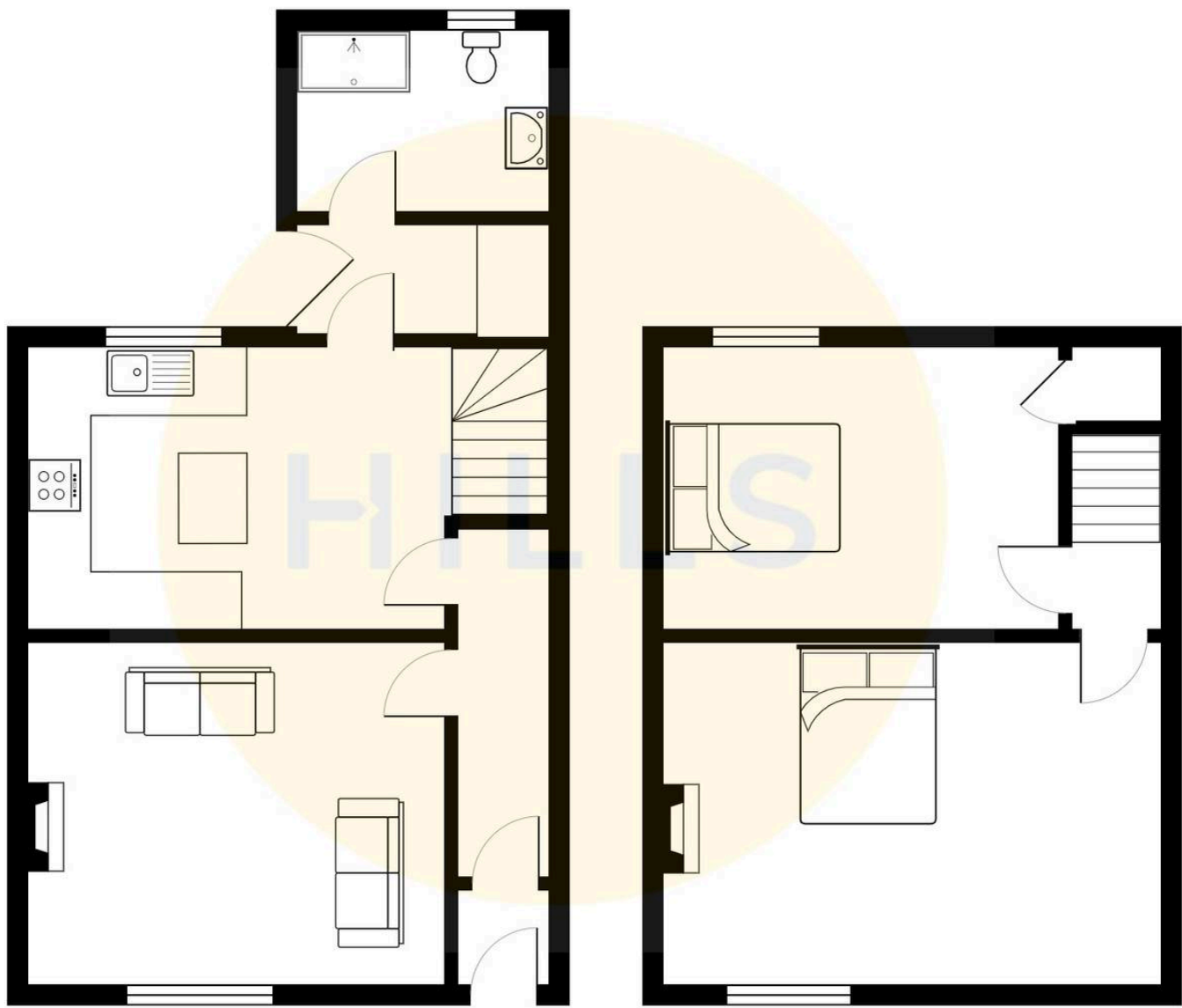
13' 6" x 11' 8" (4.12m x 3.56m)

Bedroom Two

12' 0" x 10' 6" (3.66m x 3.20m)









Hills | Salfords Estate Agent

Hills Residential, Sentinel House Albert Street – M30 0SS

0161 707 4900

sales@hills.agency

www.hills.agency/



By law, we are required to conduct anti-money laundering checks on all potential buyers and sellers. In line with HMRC guidelines, our trusted partner, Coadjute, will securely manage these checks on our behalf. A non-refundable fee of £45 + VAT per person will apply, and Coadjute will handle the payment. Once an offer is accepted, Coadjute will send a secure link for you to complete the biometric checks. These checks must be completed before we can send the memorandum of sale to all parties. PLEASE NOTE: The Agent has not tested any equipment, fixtures, fittings or services so cannot verify that they are in working order or fit for the purpose. References to the properties tenure are based on information supplied by the seller. You are advised to check the availability of this property before travelling any distance to view. Every effort has been made to ensure these particulars are correct and not misleading but their accuracy is not guaranteed nor do they form part of any contract.