



Snowdon Road, Eccles  
Manchester



In Excess of £800,000



# Snowdon Road

Eccles, Manchester

Stunning five-bed detached home in Ellesmere Park with period features, open-plan kitchen, en-suite, gated parking, garage, and prime location near schools, hospital, and Monton Village.

Council Tax band: D

Tenure: Freehold

- Beautifully presented five bedroom detached home situated on a generous plot
- Extended to the rear creating a stunning open plan kitchen dining space perfect for entertaining
- Five generous bedrooms spread over two floors
- Modern fitted downstairs WC, en-suite and four piece family bathroom
- Oozing with original features throughout the property
- Secure gated off road parking for multiple cars
- Detached garage complete with WC and kitchenette
- Wrap around garden with artificial lawn and composite decking
- The perfect family home located close to highly sought after schooling and walking distance to Salford Royal Hospital
- Located in the desirable Ellesmere Park area walking distance to Monton Village



HILLS



**Entrance Hallway**

**Reception Room One**

17' 2" x 13' 1" (5.22m x 4.00m)

**Reception Room Two**

13' 1" x 15' 9" (3.99m x 4.81m)

**Downstairs W.C.**

7' 2" x 3' 6" (2.18m x 1.06m)

**Kitchen Diner**

28' 1" x 17' 10" (8.56m x 5.43m)

**Utility Room**

9' 4" x 7' 1" (2.84m x 2.16m)

**Understairs Office / Snug**

5' 10" x 6' 7" (1.77m x 2.00m)

**Landing**

**Bedroom One**

17' 11" x 15' 9" (5.47m x 4.80m)

**Bedroom Two**

18' 11" x 17' 11" (5.76m x 5.45m)

**Bedroom Three**

13' 4" x 10' 4" (4.06m x 3.15m)

**En suite**

7' 10" x 4' 2" (2.40m x 1.26m)

**Bedroom Four**

13' 2" x 9' 11" (4.01m x 3.01m)

**Bedroom Five**

8' 8" x 8' 2" (2.64m x 2.48m)

**Family Bathroom**

8' 0" x 8' 10" (2.44m x 2.70m)

**W.C.**

6' 9" x 2' 6" (2.06m x 0.77m)





### Entrance Hallway

### Reception Room One

17' 2" x 13' 1" (5.22m x 4.00m)

### Reception Room Two

13' 1" x 15' 9" (3.99m x 4.81m)

### Downstairs W.C.

7' 2" x 3' 6" (2.18m x 1.06m)

### Kitchen Diner

28' 1" x 17' 10" (8.56m x 5.43m)

### Utility Room

9' 4" x 7' 1" (2.84m x 2.16m)

### Understairs Office / Snug

5' 10" x 6' 7" (1.77m x 2.00m)

### Landing

### Bedroom One

17' 11" x 15' 9" (5.47m x 4.80m)

### Bedroom Two

18' 11" x 17' 11" (5.76m x 5.45m)

### Bedroom Three

13' 4" x 10' 4" (4.06m x 3.15m)

### En suite

7' 10" x 4' 2" (2.40m x 1.26m)

### Bedroom Four

13' 2" x 9' 11" (4.01m x 3.01m)

### Bedroom Five

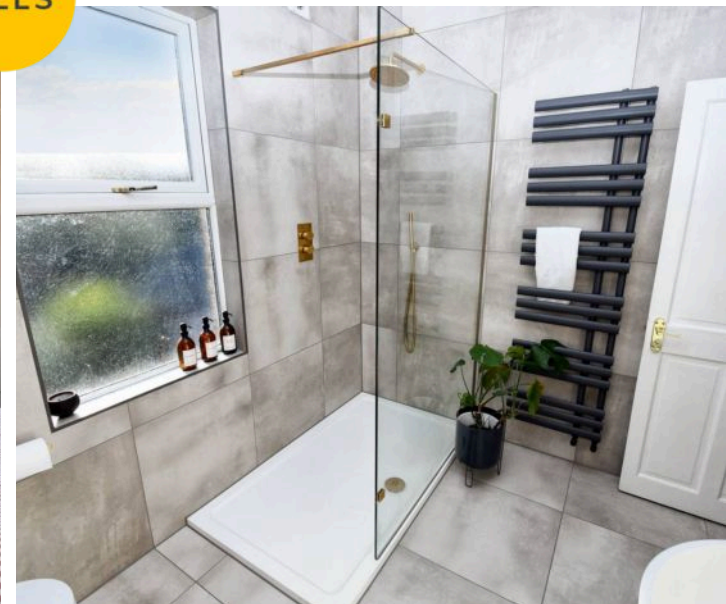
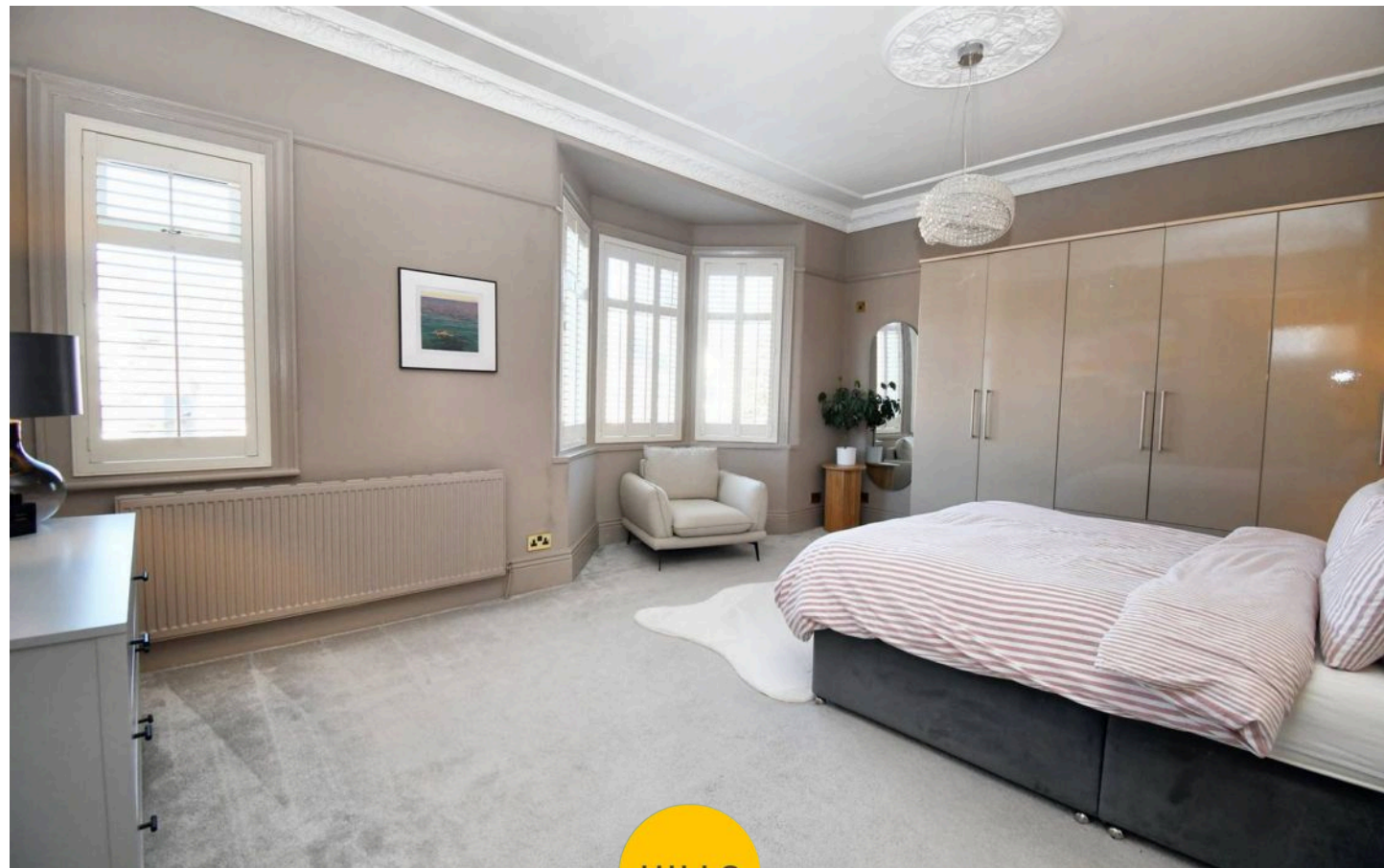
8' 8" x 8' 2" (2.64m x 2.48m)

### Family Bathroom

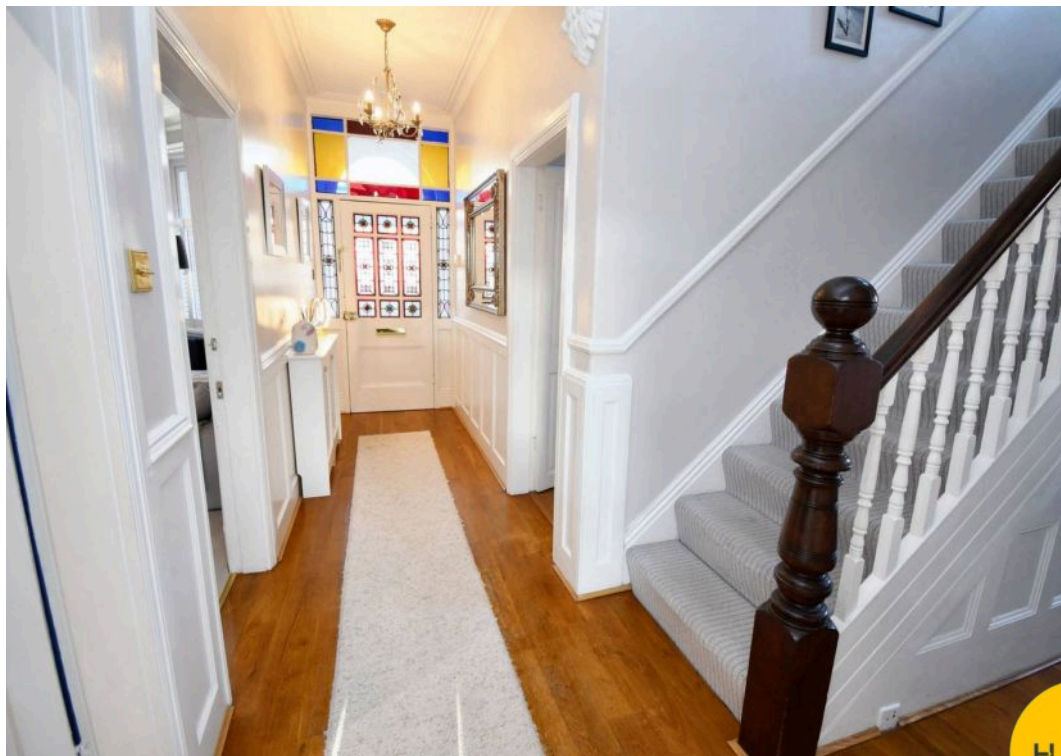
8' 0" x 8' 10" (2.44m x 2.70m)

### W.C.

6' 9" x 2' 6" (2.06m x 0.77m)

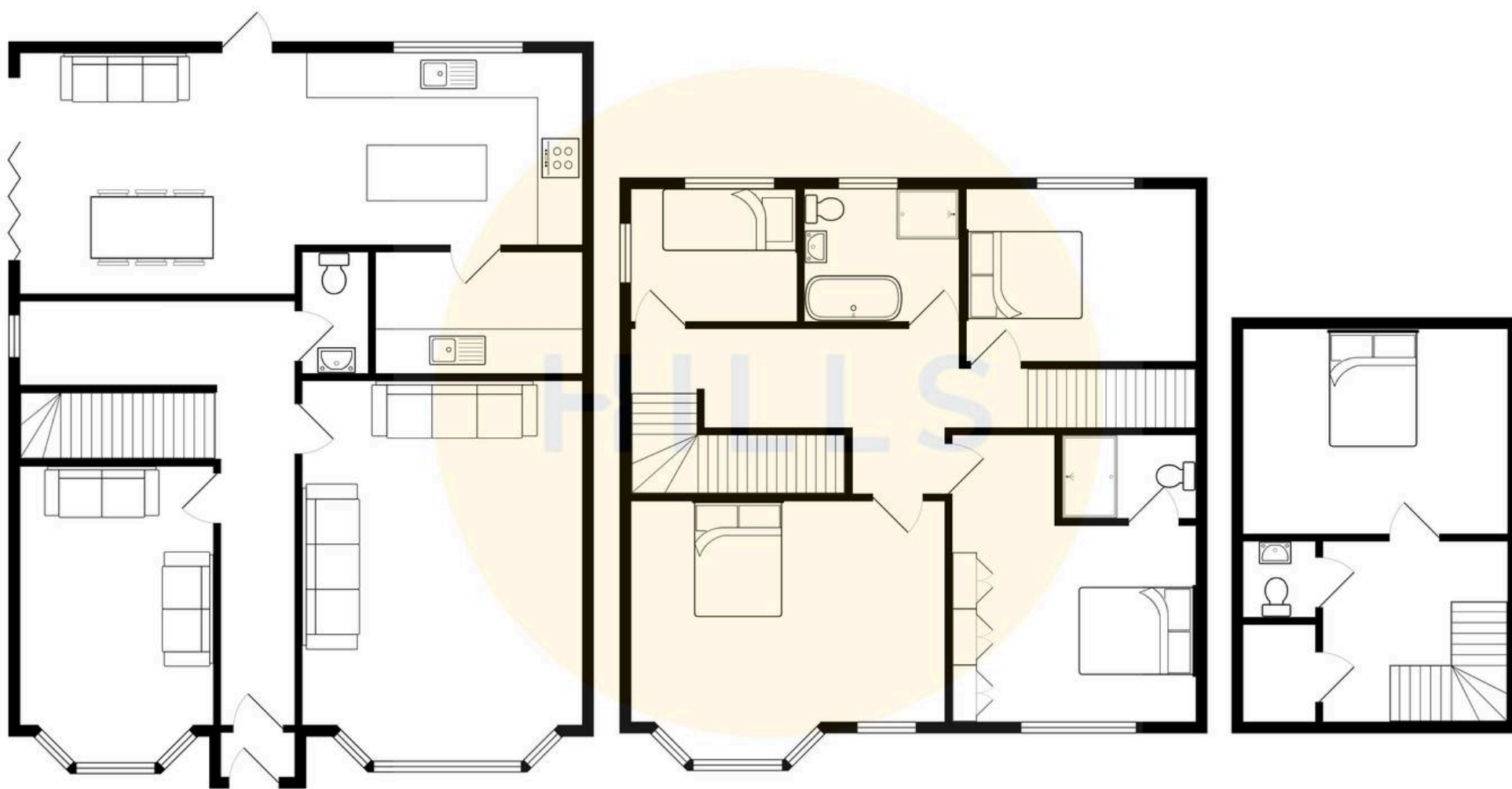






HILLS









## Hills | Salfords Estate Agent

Hills Residential, Sentinel House Albert Street – M30 0SS

0161 707 4900

[sales@hills.agency](mailto:sales@hills.agency)

[www.hills.agency/](http://www.hills.agency/)



By law, we are required to conduct anti-money laundering checks on all potential buyers and sellers. In line with HMRC guidelines, our trusted partner, Coadjute, will securely manage these checks on our behalf. A non-refundable fee of £45 + VAT per person will apply, and Coadjute will handle the payment. Once an offer is accepted, Coadjute will send a secure link for you to complete the biometric checks. These checks must be completed before we can send the memorandum of sale to all parties. PLEASE NOTE: The Agent has not tested any equipment, fixtures, fittings or services so cannot verify that they are in working order or fit for the purpose. References to the properties tenure are based on information supplied by the seller. You are advised to check the availability of this property before travelling any distance to view. Every effort has been made to ensure these particulars are correct and not misleading but their accuracy is not guaranteed nor do they form part of any contract.