



Clifton Avenue, Eccles

Manchester



Offers Over £350,000



# Clifton Avenue

Eccles, Manchester

Charming three bed terrace in peaceful Monton Village. Bay-fronted lounge, modern kitchen, well-kept garden. Surrounded by amenities, excellent transport links. Ideal for families and first-time buyers.

Council Tax band: A

Tenure: Freehold

- Tucked Away on a Cul De Sac within the Desirable Monton Village
- Beautifully Presented Three Bedroom Terrace Property
- Bay Fronted Lounge Open Plan with the Second Reception Room
- Three Generously Sized Bedrooms
- Stunning Shower Room
- Well Kept Garden that Benefit from the Sun
- Modern Fitted Kitchen Flooded with Natural Light
- Surrounded by a Plethora of Amenities & Excellent Transport Links



HILLS

### Entrance Hallway

### Lounge / Diner

25' 4" x 9' 8" (7.72m x 2.95m)

### Kitchen

12' 1" x 8' 3" (3.68m x 2.52m)

### Landing

### Bedroom One

13' 4" x 11' 3" (4.06m x 3.43m)

### Bedroom Two

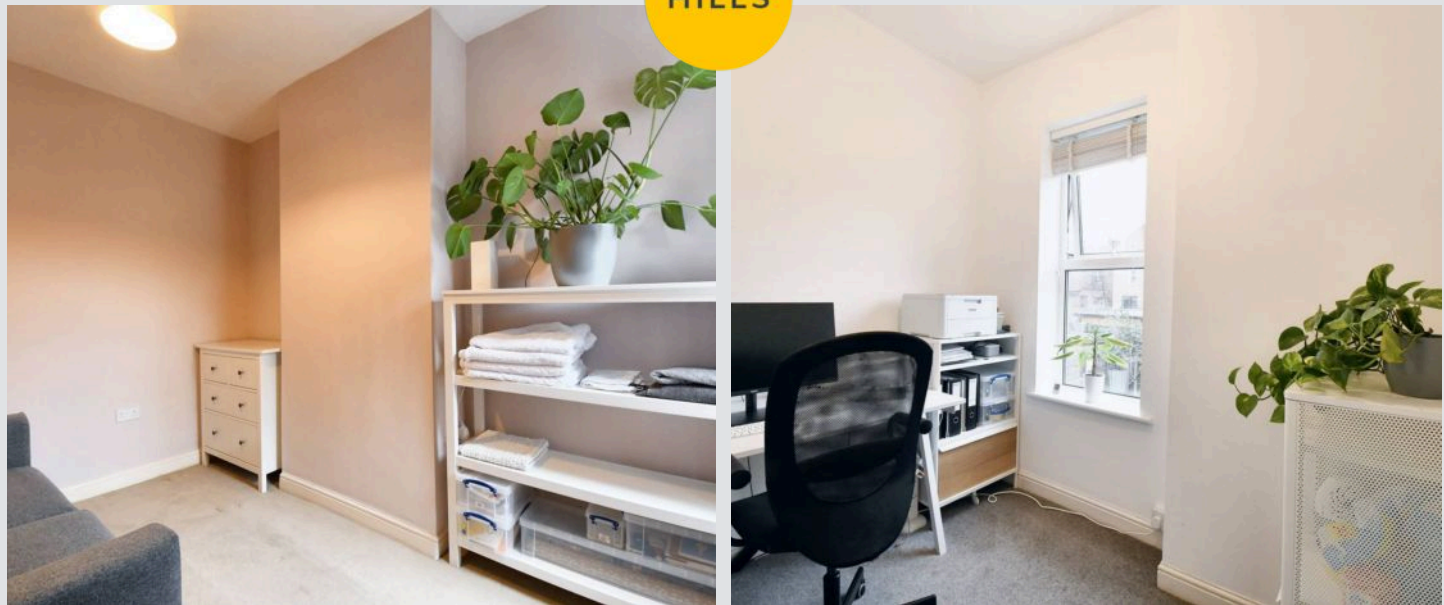
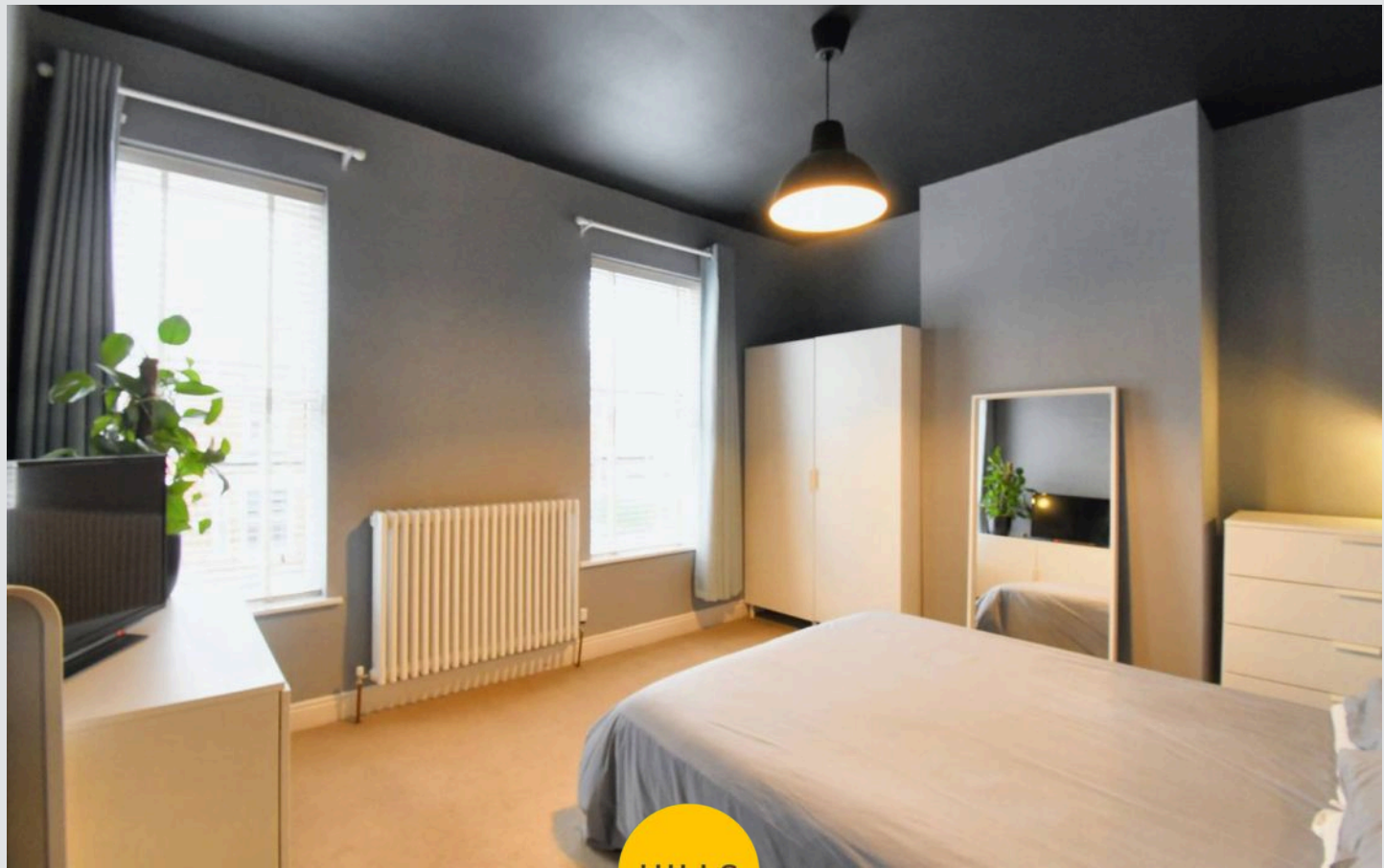
11' 5" x 8' 3" (3.48m x 2.52m)

### Bedroom Three

8' 6" x 7' 3" (2.59m x 2.21m)

### Bathroom

6' 5" x 5' 5" (1.96m x 1.65m)

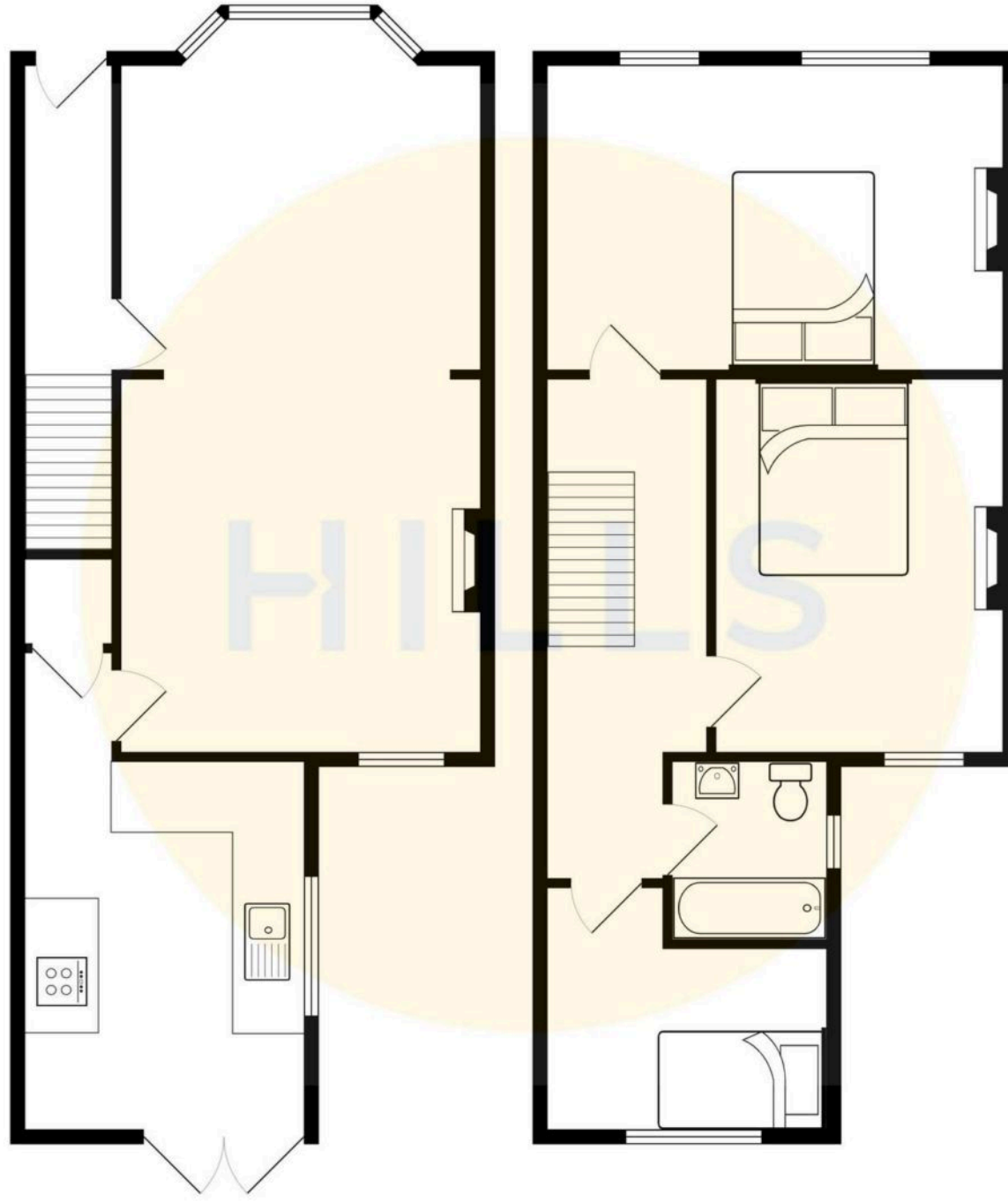






HILLS









## Hills | Salfords Estate Agent

Hills Residential, Sentinel House Albert Street – M30 0SS

0161 707 4900

[sales@hills.agency](mailto:sales@hills.agency)

[www.hills.agency/](http://www.hills.agency/)



By law, we are required to conduct anti-money laundering checks on all potential buyers and sellers. In line with HMRC guidelines, our trusted partner, Coadjute, will securely manage these checks on our behalf. A non-refundable fee of £45 + VAT per person will apply, and Coadjute will handle the payment. Once an offer is accepted, Coadjute will send a secure link for you to complete the biometric checks. These checks must be completed before we can send the memorandum of sale to all parties. PLEASE NOTE: The Agent has not tested any equipment, fixtures, fittings or services so cannot verify that they are in working order or fit for the purpose. References to the properties tenure are based on information supplied by the seller. You are advised to check the availability of this property before travelling any distance to view. Every effort has been made to ensure these particulars are correct and not misleading but their accuracy is not guaranteed nor do they form part of any contract.