



Ellesmere House, Sandwich Road

Manchester



£250,000

Ellesmere House

Manchester

*NO CHAIN * Beautifully Presented Two Bedroom Top Floor Apartment Located in the Peaceful Ellesmere Park, Boasting Juliette Balconies and a Communal Lift!

Council Tax band: C

Tenure: Leasehold

- Beautifully Presented Two Bedroom, Top Floor Apartment
- Situated on a Stunning Development in the Peaceful Ellesmere Park
- Large Open Plan Living, Dining and Kitchen Area, Complete with Modern Units and Juliette Balconies
- Two Double Bedrooms, with an Ensuite to the Main Bedroom
- Modern Three-Piece Bathroom
- Just a Short Walk from Monton Village, which is Host to a Fine Array of Bars, Shops and Restaurants
- Close to Excellent Transport Links into Salford Quays, Media City and Manchester City Centre
- Viewing is Highly Recommended!



Entrance Hallway

Living/Dining/Kitchen

32' 1" x 11' 1" (9.77m x 3.38m)

Bedroom One

14' 9" x 8' 9" (4.50m x 2.66m)

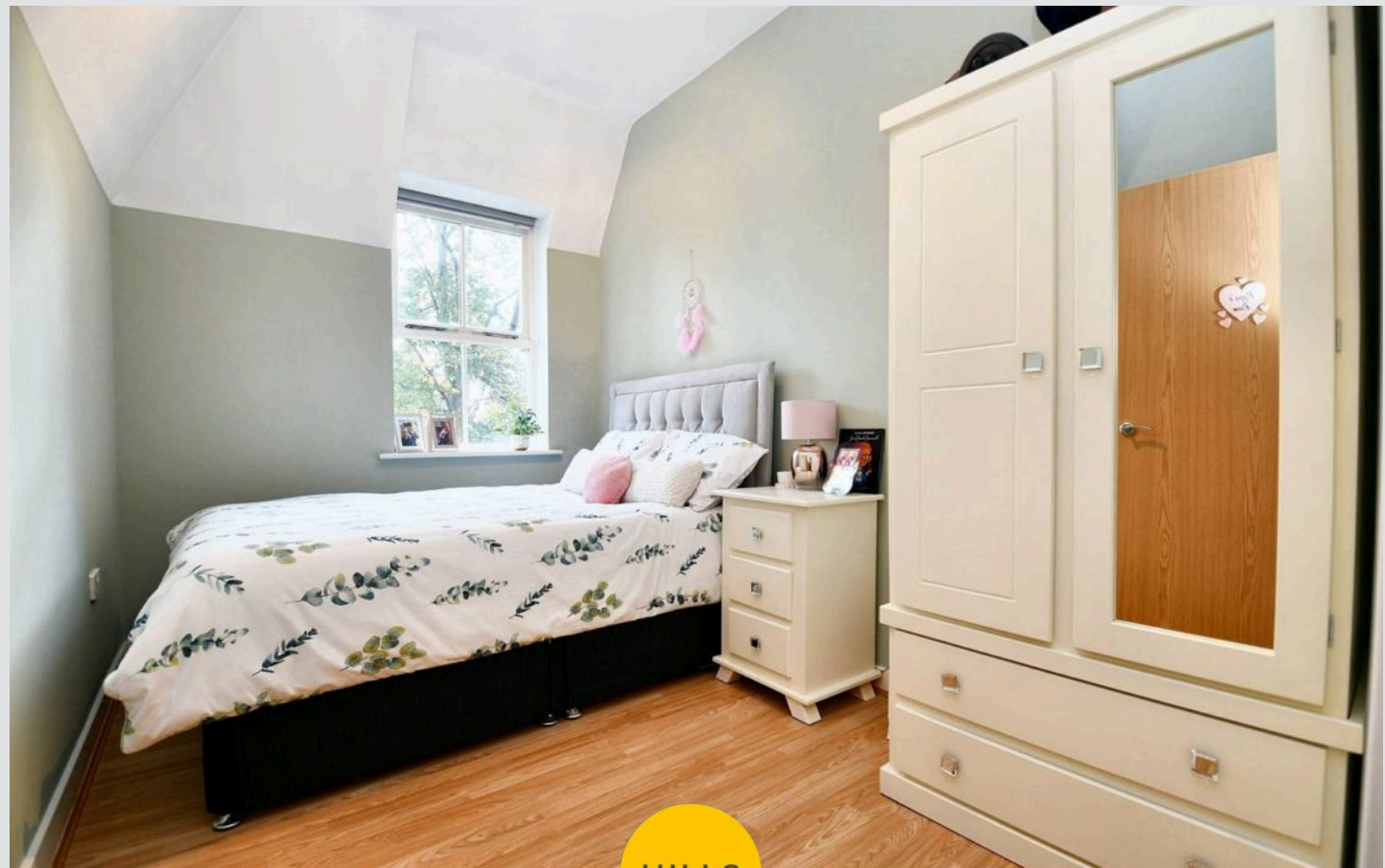
En-suite

6' 6" x 4' 5" (1.98m x 1.34m)

Bedroom Two

11' 6" x 7' 8" (3.50m x 2.33m)

Bathroom



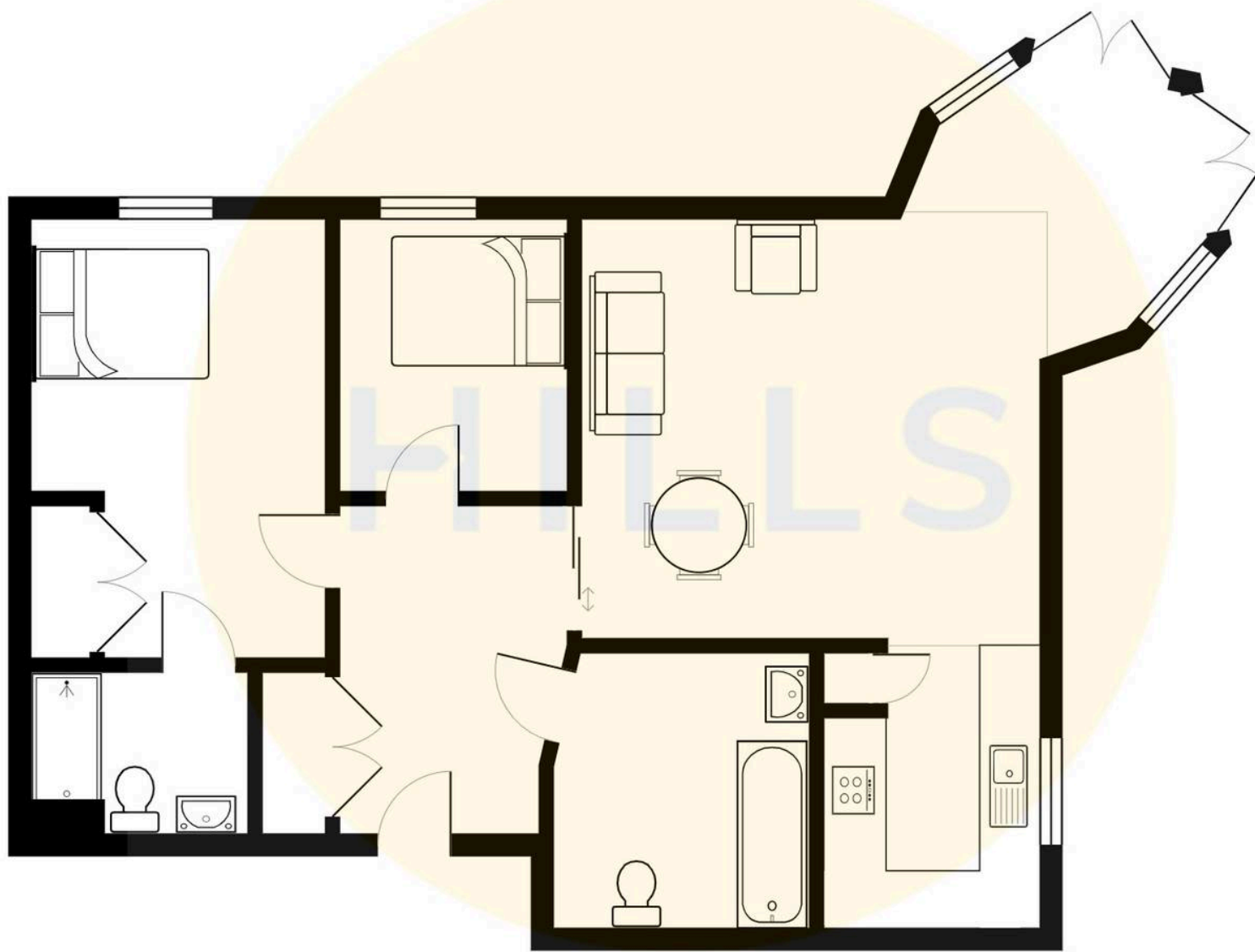
HILLS





HILLS







Hills | Salfords Estate Agent

Hills Residential, Sentinel House Albert Street – M30 0SS

0161 707 4900

sales@hills.agency

www.hills.agency/



THE PROPERTY MISDESCRIPTIONS ACT 1991 The Agent has not tested any apparatus, equipment, fixtures and fittings or services and so cannot verify that they are in working order or fit for the purpose. A Buyer is advised to obtain verification from their Solicitor or Surveyor. References to the Tenure of a Property are based on information supplied by the Seller. The Agent has not had sight of the title documents. A Buyer is advised to obtain verification from their Solicitor. You are advised to check the availability of this property before travelling any distance to view. Every effort and precaution has been made to ensure these particulars are correct and not misleading but their accuracy is not guaranteed nor do they form part of any contract. If there is any point which is of particular importance to you, please contact us and we will provide any information you require. This is advisable, particularly if you intend to travel some distance to view the property. The mention of any appliances and services within these details does not imply that they are in full and efficient working order. These particulars are in draft form awaiting Vendors confirmation of their accuracy. These details must therefore be taken as a guide only.