



Montgomery Street, Eccles

Manchester



Offers Over £350,000



# Montgomery Street

Eccles, Manchester

Lovely 2019-built New Ashford house in Havenswood boasts bright lounge, open plan kitchen, three double bedrooms (master en suite), family bathroom, guest W.C. Off-road parking, garage. Close to amenities, parks, schools, public transport, and motorway links for convenience."

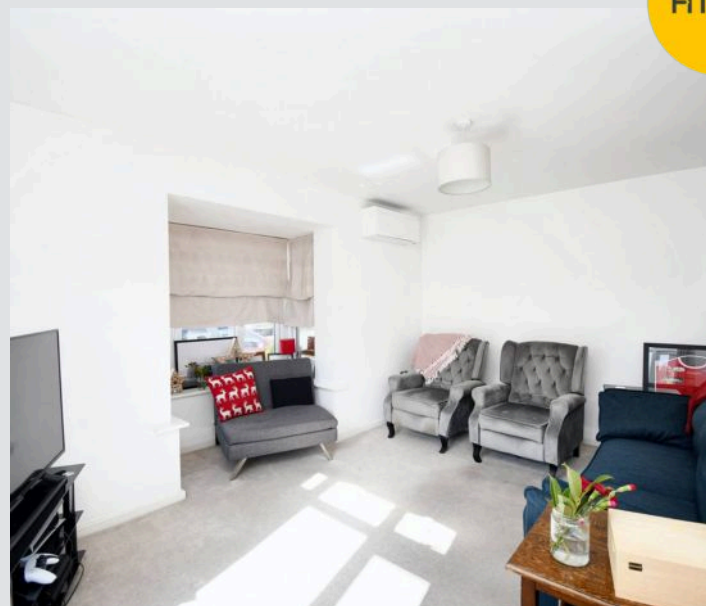
Council Tax band: C

Tenure: Freehold

- Introducing this New Ashford located on the desirable Havenswood Development and offered to the Market with No Onward Chain
- Lovely and Bright Spacious Lounge
- Stunning Open Plan Kitchen & Dining Space with Quartz Work Surfaces
- Three Double Bedrooms
- Family Bathroom, En Suite to Master & Guest W.C.
- Off Road Parking for Multiple Cars & Insulated Garage
- Excellently Located Close to Many Local Amenities Including Shops, Parks & Schools
- Well Served by Public Transport & Motorway Links



HILLS



## Entrance Hallway

## Lounge

14' 8" x 13' 1" (4.47m x 3.99m)

## Kitchen / Diner

17' 3" x 14' 9" (5.26m x 4.50m)

## Downstairs W.C.

6' 3" x 3' 1" (1.91m x 0.94m)

## Landing

## Bedroom One

15' 6" x 9' 2" (4.72m x 2.79m)

## En suite

6' 4" x 5' 4" (1.93m x 1.63m)

## Bedroom Two

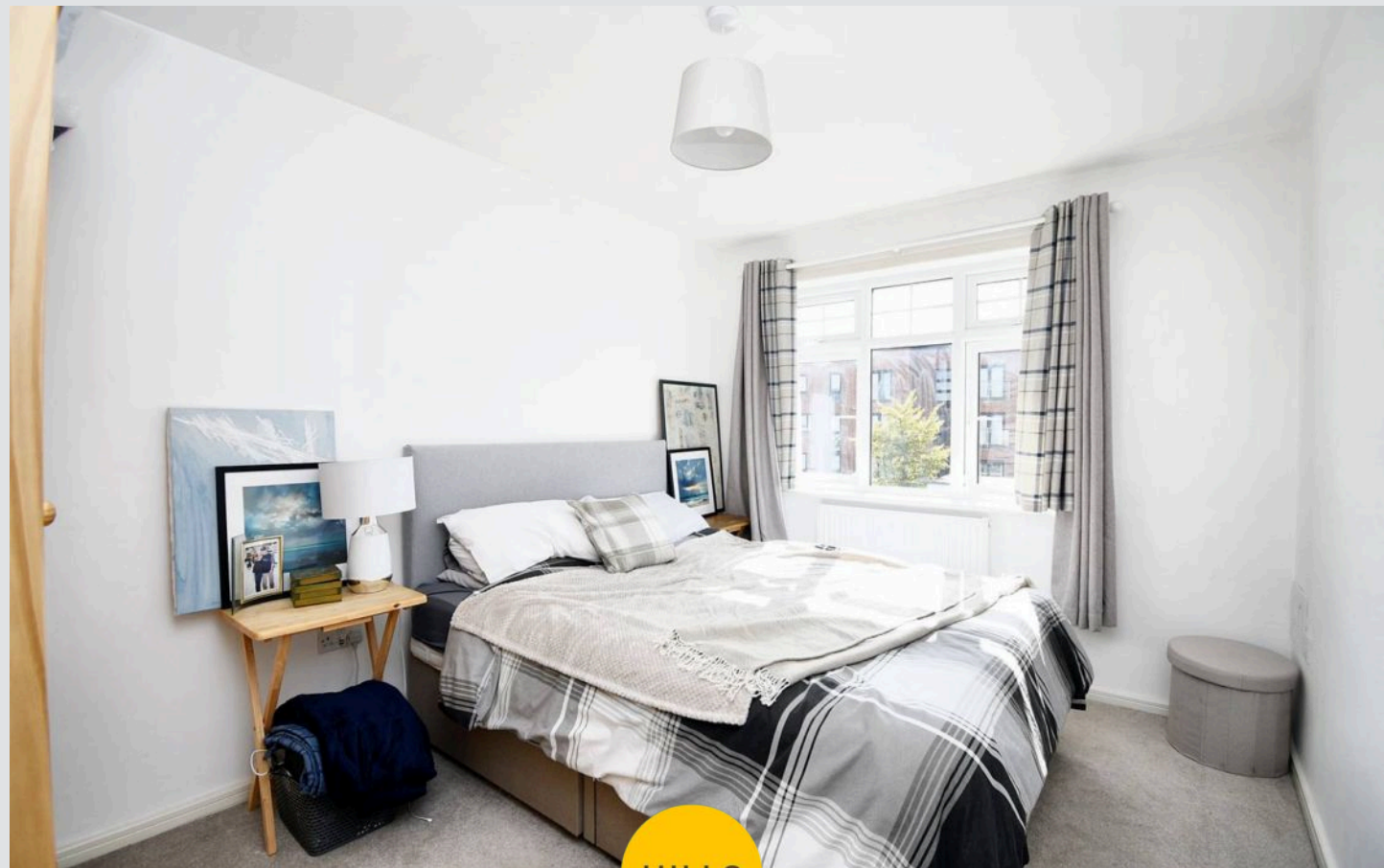
9' 9" x 10' 4" (2.97m x 3.15m)

## Bedroom Three

9' 9" x 8' 2" (2.97m x 2.49m)

## Bathroom

7' 0" x 6' 3" (2.13m x 1.91m)







HILLS









## Hills | Salfords Estate Agent

Hills Residential, Sentinel House Albert Street – M30 0SS

0161 707 4900

[sales@hills.agency](mailto:sales@hills.agency)

[www.hills.agency/](http://www.hills.agency/)



By law, we are required to conduct anti-money laundering checks on all potential buyers and sellers. In line with HMRC guidelines, our trusted partner, Coadjute, will securely manage these checks on our behalf. A non-refundable fee of £45 + VAT per person will apply, and Coadjute will handle the payment. Once an offer is accepted, Coadjute will send a secure link for you to complete the biometric checks. These checks must be completed before we can send the memorandum of sale to all parties. PLEASE NOTE: The Agent has not tested any equipment, fixtures, fittings or services so cannot verify that they are in working order or fit for the purpose. References to the properties tenure are based on information supplied by the seller. You are advised to check the availability of this property before travelling any distance to view. Every effort has been made to ensure these particulars are correct and not misleading but their accuracy is not guaranteed nor do they form part of any contract.