

Matlock Street, Eccles

Manchester

HILLS

Offers Over £200,000



# Matlock Street

Eccles, Manchester

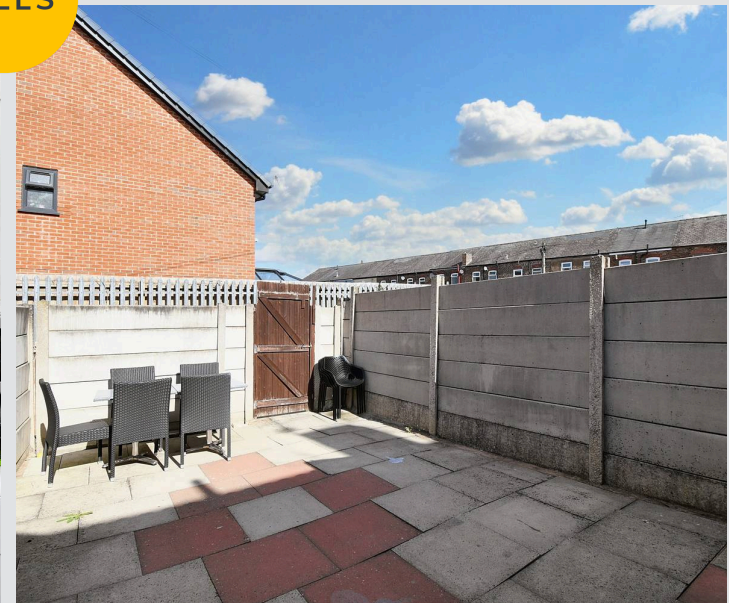
Fabulous terrace property in Peel Green, ideal first home. two reception rooms, extended kitchen. two double bedrooms, sunlit garden. Near Trafford Centre – great amenities, transport links. Council Tax band: A

Tenure: Freehold

- Perfect First Time Buy Located in a Popular Pocket of Peel Green Area
- Two reception rooms
- Extended Kitchen to the Rear
- Two Double Bedrooms
- Three Piece Bathroom Suite
- Well Kept Rear Garden that Benefits from the Sun Throughout the day
- Located just a Short Walk to The Trafford Centre
- Surrounded By Brilliant Amenities & Transport Links



HILLS





**Reception Room One**

10' 3" x 8' 9" (3.12m x 2.67m)

**Reception Room Two**

12' 1" x 11' 9" (3.68m x 3.58m)

**Kitchen**

14' 4" x 6' 8" (4.37m x 2.03m)

**Landing****Bedroom One**

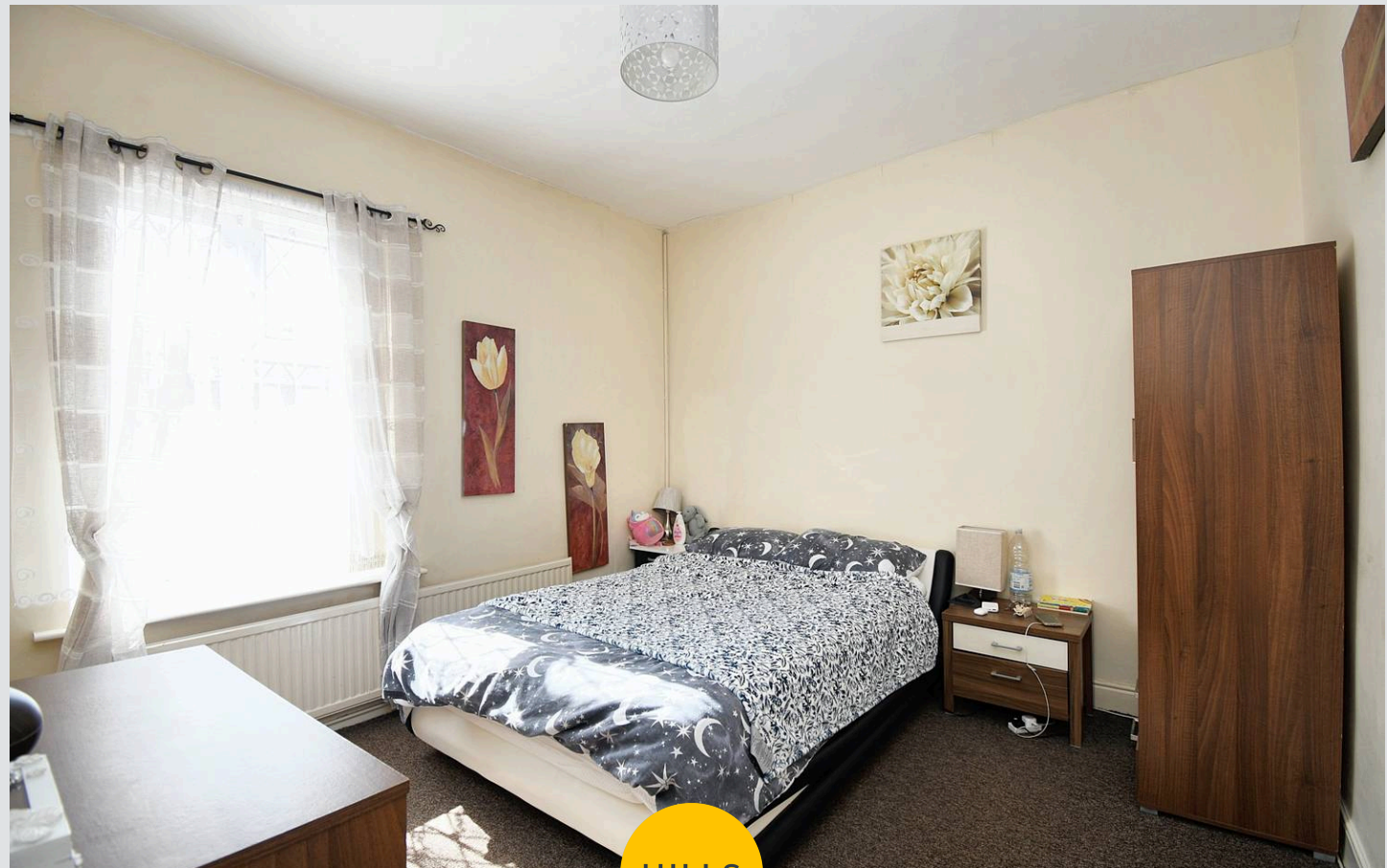
12' 3" x 10' 8" (3.73m x 3.25m)

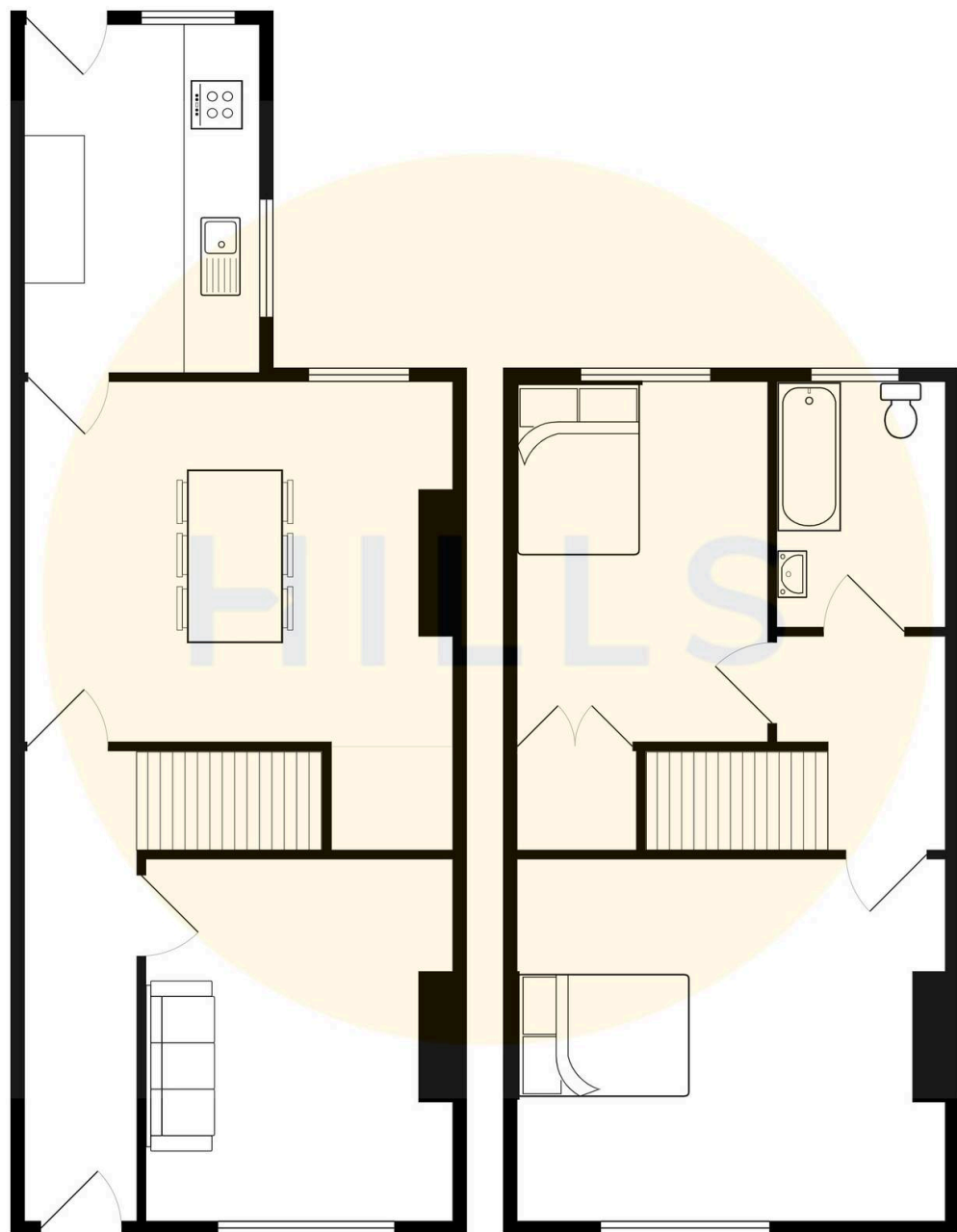
**Bedroom Two**

11' 4" x 5' 6" (3.45m x 1.68m)

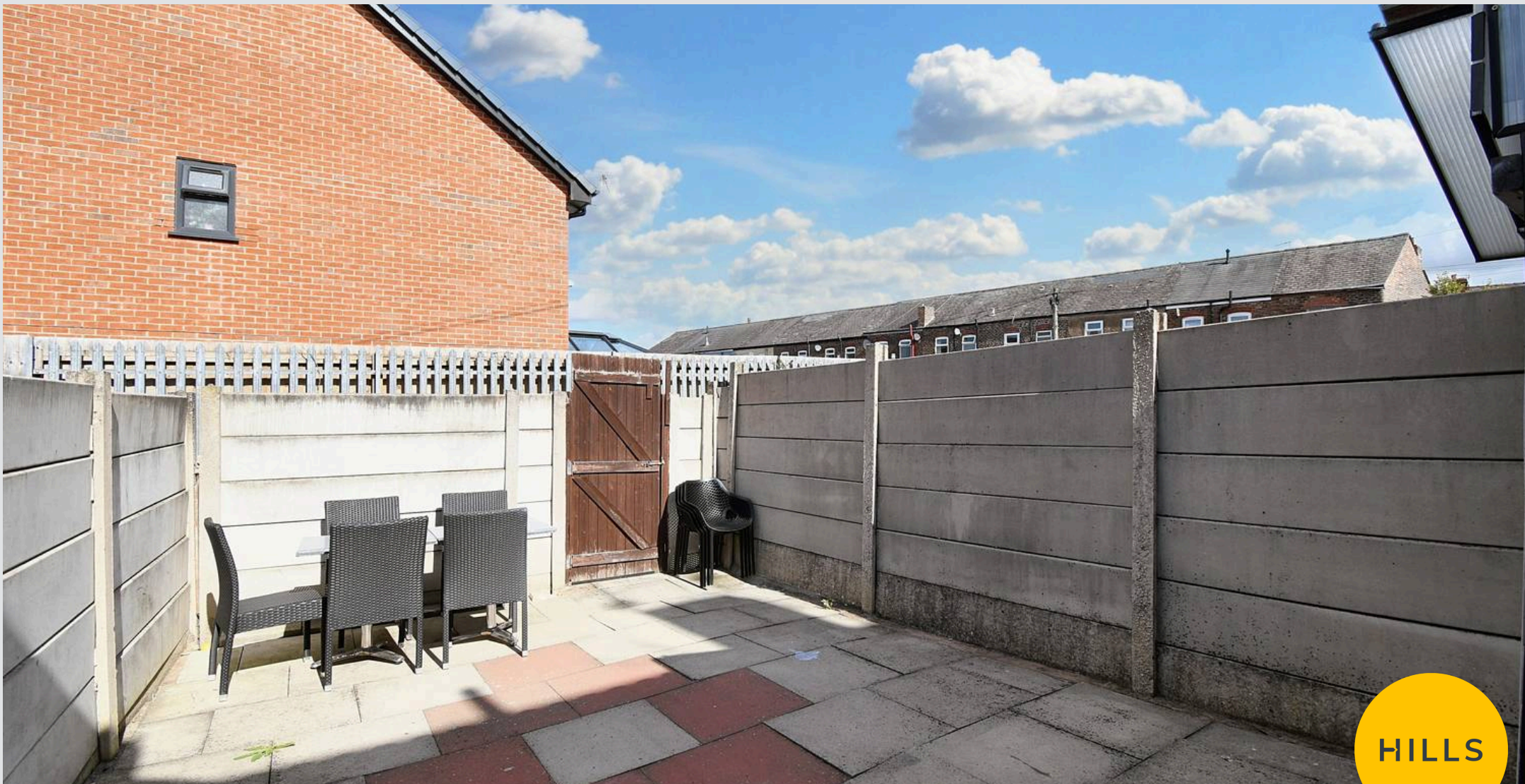
**Bathroom**

8' 6" x 6' 3" (2.59m x 1.91m)









## Hills | Salfords Estate Agent

Hills Residential, Sentinel House Albert Street – M30 0SS

0161 707 4900

[sales@hills.agency](mailto:sales@hills.agency)

[www.hills.agency/](http://www.hills.agency/)



By law, we are required to conduct anti-money laundering checks on all potential buyers and sellers. In line with HMRC guidelines, our trusted partner, Coadjute, will securely manage these checks on our behalf. A non-refundable fee of £45 + VAT per person will apply, and Coadjute will handle the payment. Once an offer is accepted, Coadjute will send a secure link for you to complete the biometric checks. These checks must be completed before we can send the memorandum of sale to all parties. PLEASE NOTE: The Agent has not tested any equipment, fixtures, fittings or services so cannot verify that they are in working order or fit for the purpose. References to the properties tenure are based on information supplied by the seller. You are advised to check the availability of this property before travelling any distance to view. Every effort has been made to ensure these particulars are correct and not misleading but their accuracy is not guaranteed nor do they form part of any contract.