



Leach Drive, Eccles
Manchester



Offers Over £270,000

Leach Drive

Eccles, Manchester

Fabulous property on 'The Works' development near Monton Village. Ideal for first-time buyers. Spacious lounge, modern kitchen, three bedrooms, three piece bathroom, W.C. Low maintenance garden, off-road parking, great amenities and transport links.

Freehold title.

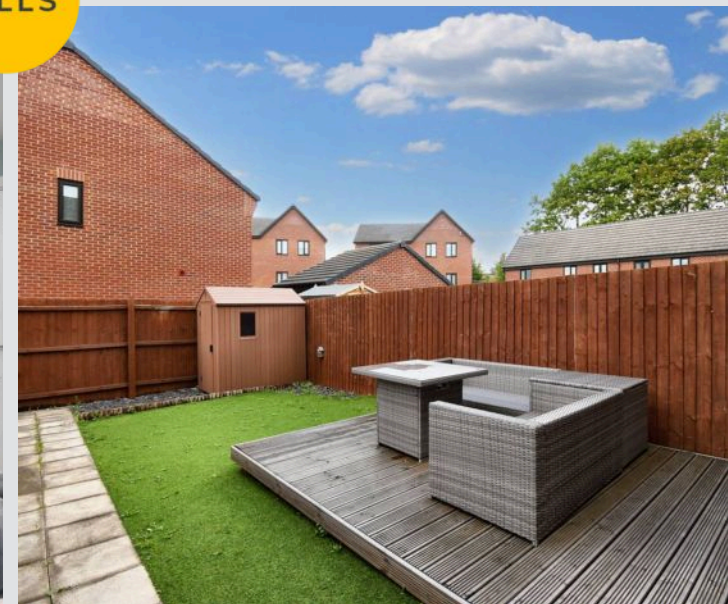
Council Tax band: C

Tenure: Leasehold

- Located on the Desirable 'The Works' Development, Just a Short Walk to Monton Village and Offered to the Market with No Onward Chain
- Perfect First Time Home
- Spacious Lounge
- Open Plan Fitted Kitchen and Dining Space
- Two Double Bedrooms and a Single
- Three Piece Bathroom Suite & Guest W.C.
- Low Maintenance Garden to the Rear & Off Road Parking for Multiple Cars
- Surrounded by Excellent Amenities & Fantastic Transport Links
- Freehold Title



HILLS



Entrance Hallway

Lounge

14' 9" x 13' 1" (4.50m x 3.99m)

Kitchen / Diner

14' 8" x 9' 1" (4.47m x 2.77m)

Landing

Bedroom One

11' 8" x 8' 2" (3.56m x 2.49m)

Bedroom Two

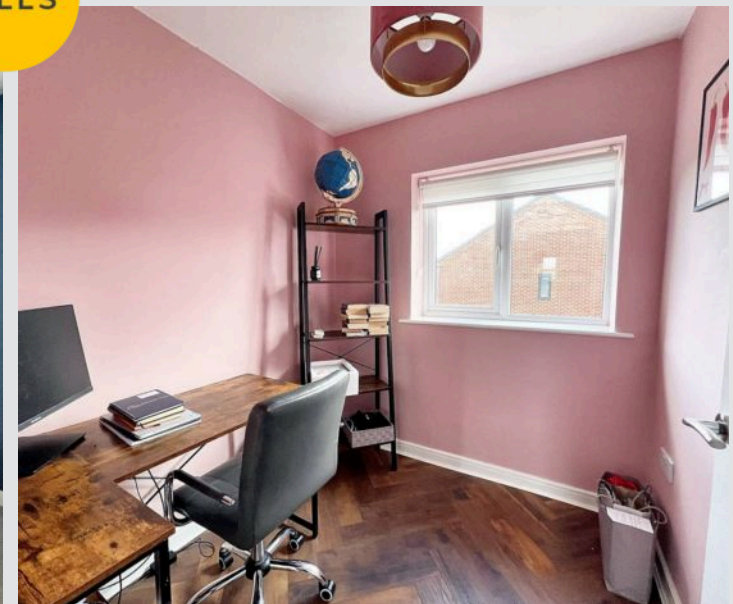
10' 4" x 8' 2" (3.15m x 2.49m)

Bedroom Three

6' 5" x 6' 4" (1.96m x 1.93m)

Bathroom

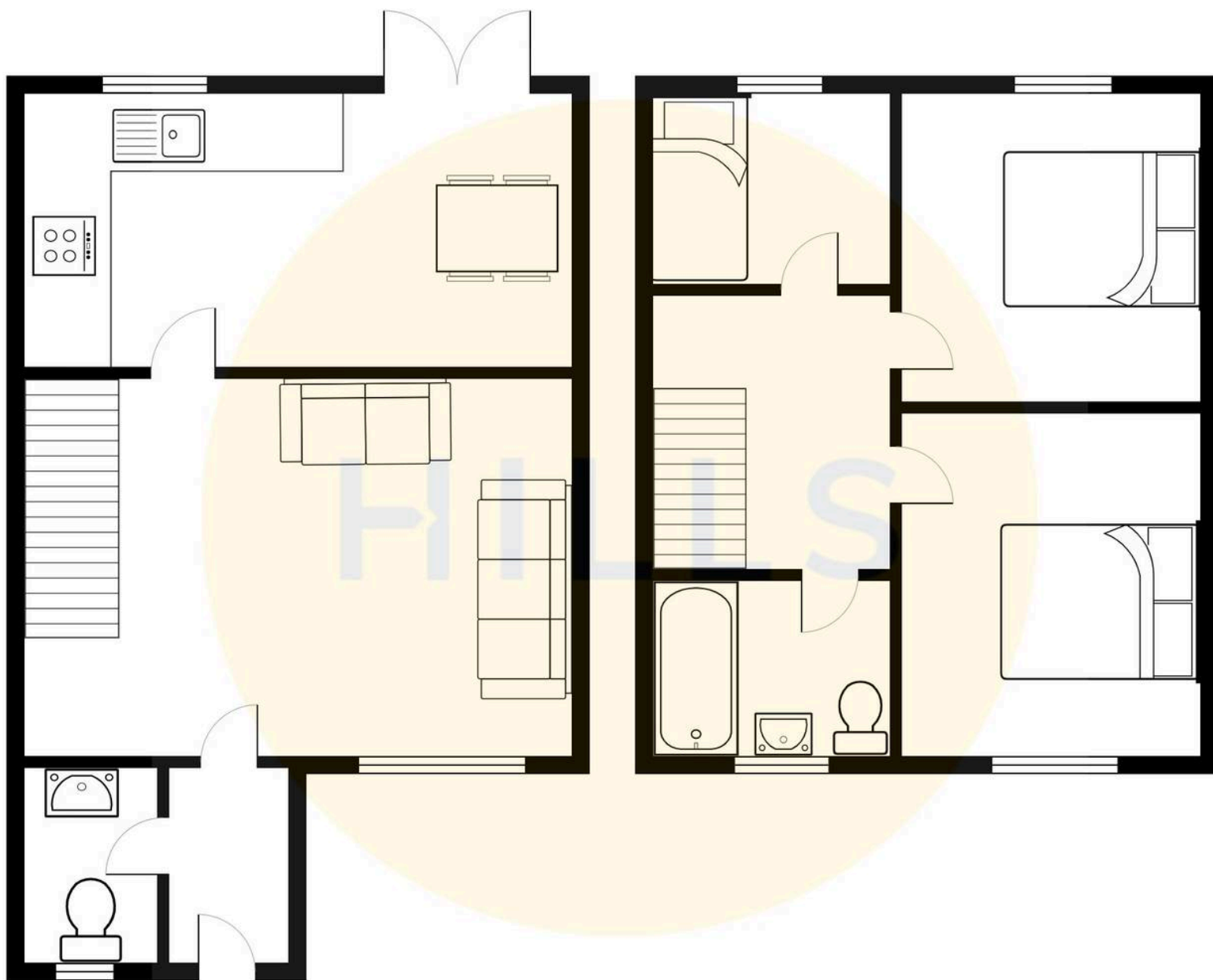
6' 4" x 6' 1" (1.93m x 1.85m)





HILLS







Hills | Salfords Estate Agent

Hills Residential, Sentinel House Albert Street – M30 0SS

0161 707 4900

sales@hills.agency

www.hills.agency/



By law, we are required to conduct anti-money laundering checks on all potential buyers and sellers. In line with HMRC guidelines, our trusted partner, Coadjute, will securely manage these checks on our behalf. A non-refundable fee of £45 + VAT per person will apply, and Coadjute will handle the payment. Once an offer is accepted, Coadjute will send a secure link for you to complete the biometric checks. These checks must be completed before we can send the memorandum of sale to all parties. PLEASE NOTE: The Agent has not tested any equipment, fixtures, fittings or services so cannot verify that they are in working order or fit for the purpose. References to the properties tenure are based on information supplied by the seller. You are advised to check the availability of this property before travelling any distance to view. Every effort has been made to ensure these particulars are correct and not misleading but their accuracy is not guaranteed nor do they form part of any contract.