



Kingswood Road, Eccles

Manchester

HILLS

Offers Over £220,000

Kingswood Road

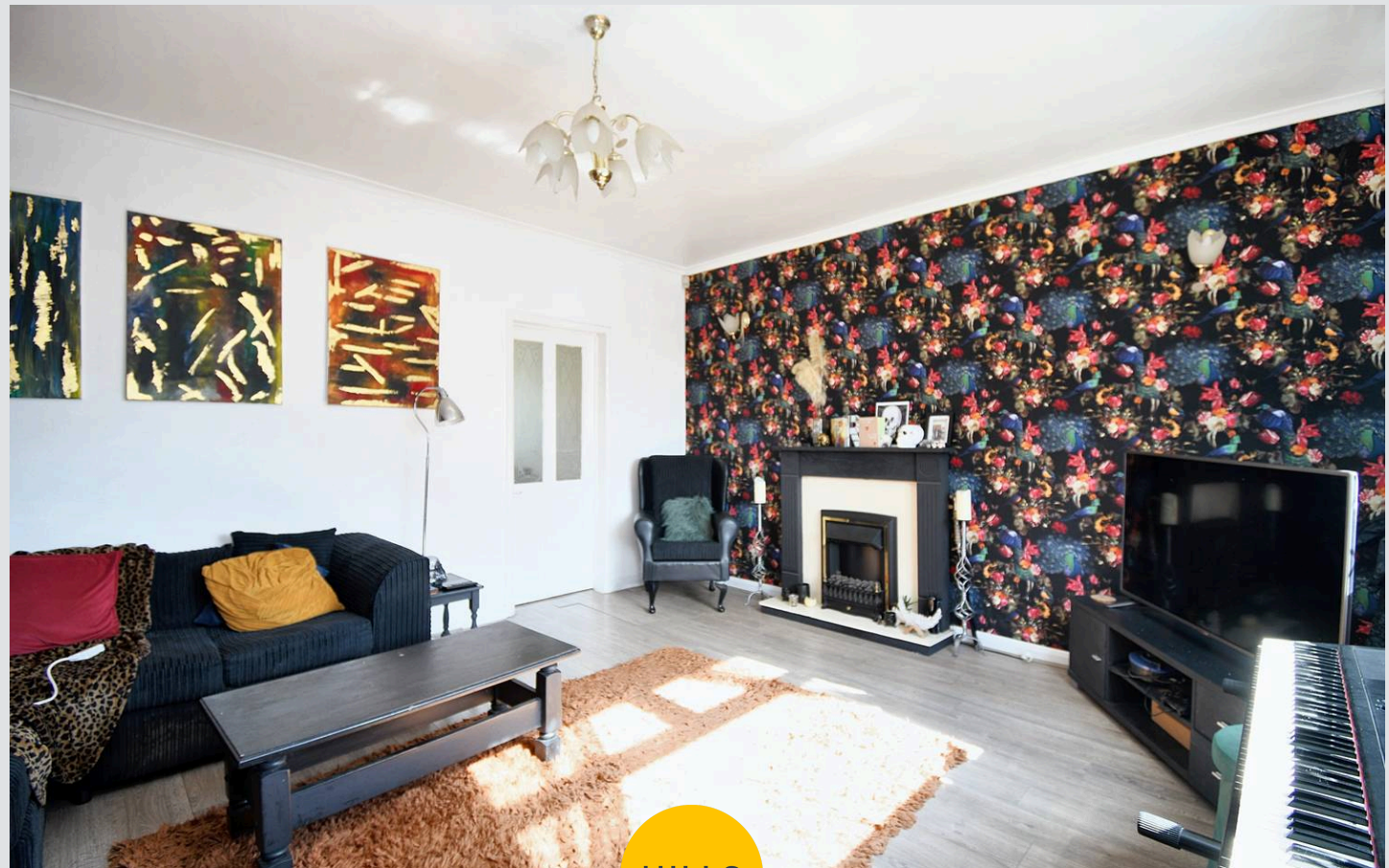
Eccles, Manchester

Welcome to this fabulous house positioned between Monton and Worsley Villages, perfect for first-time buyers or growing families. Spacious lounge, fitted kitchen, three generous bedrooms, modern bathroom, gardens, local amenities & transport links. Perfect for a comfortable and convenient living space.

Council Tax band: A

Tenure: Freehold

- Offered to the Market with No Onward Chain
- Perfectly Positioned Between the Popular Monton & Worsley Villages
- Fabulous First Time Buy or Family Home
- Spacious Family Lounge
- Open Plan Fitted Kitchen & Dining Space
- Three Generous Bedrooms
- Family Bathroom Suite & Guest W.C.
- Gardens to the Front, Side & Rear Offering Further Development
- Well Served by Local Amenities & Transport Links



HILLS



Entrance Hallway

Living Room

15' 5" x 13' 9" (4.70m x 4.20m)

Kitchen Diner

9' 10" x 18' 8" (3.00m x 5.70m)

WC

Bedroom One

13' 9" x 11' 2" (4.20m x 3.40m)

Bedroom Two

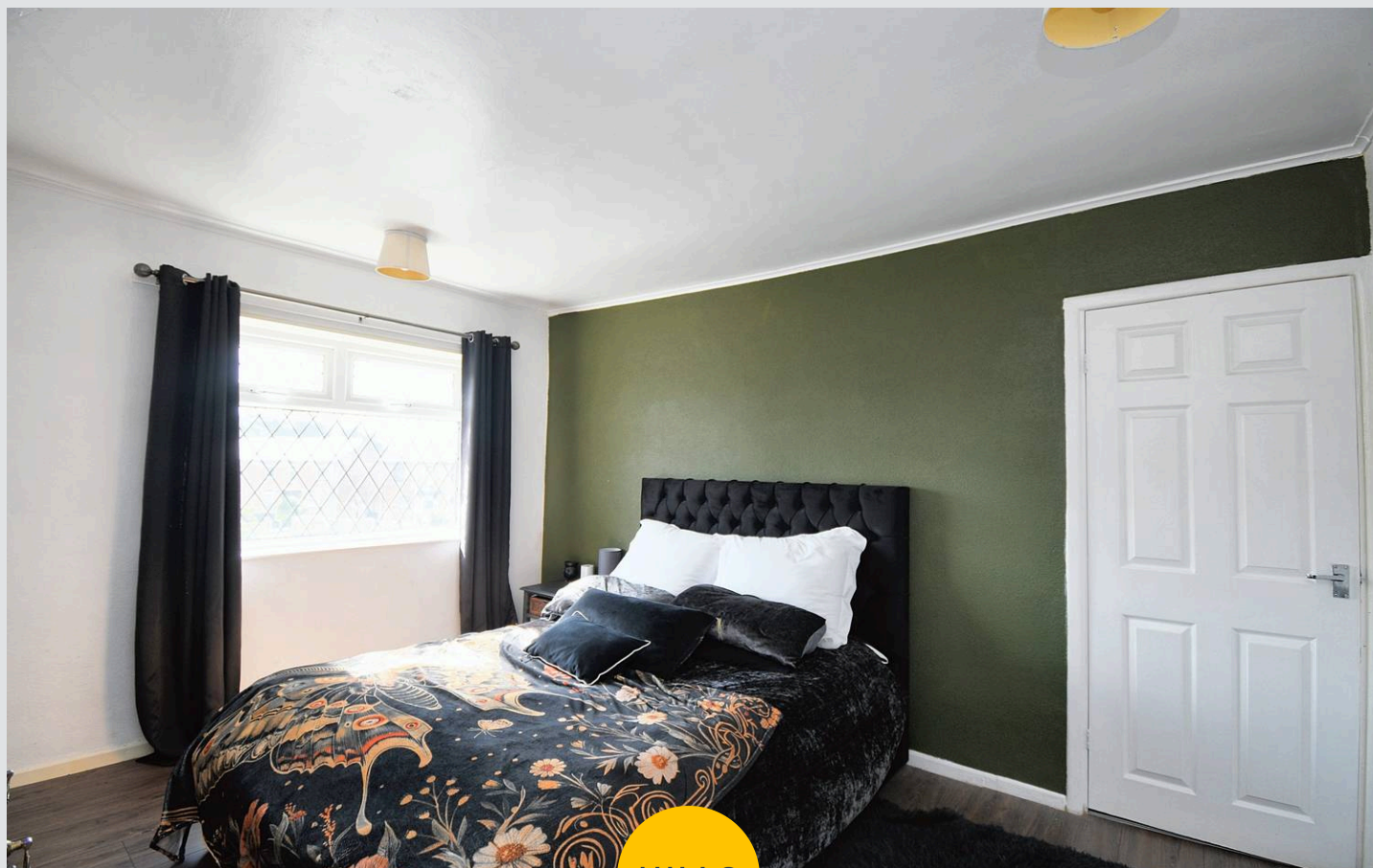
12' 6" x 9' 10" (3.80m x 3.00m)

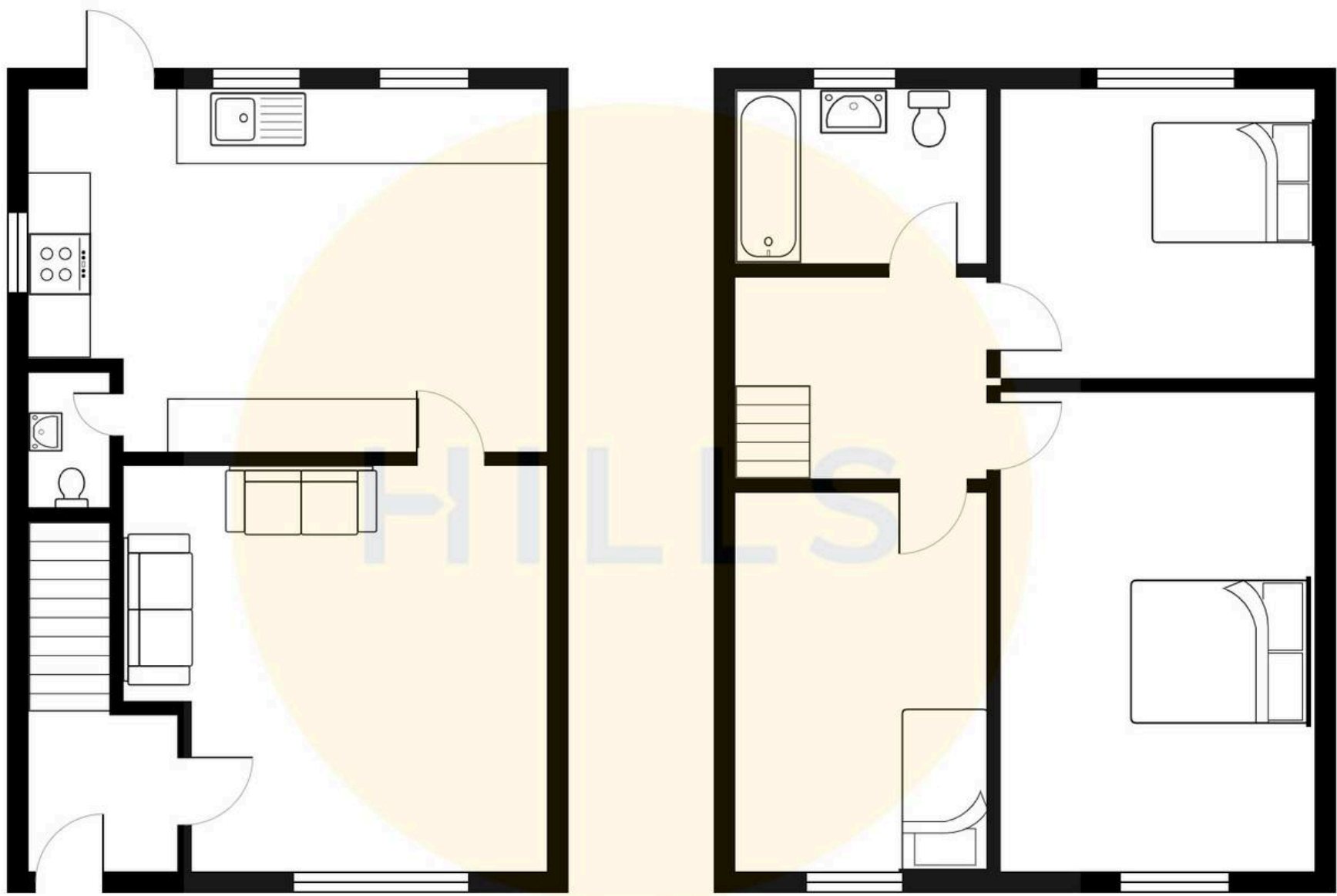
Bedroom Three

7' 7" x 11' 2" (2.30m x 3.40m)

Bathroom

6' 3" x 6' 3" (1.90m x 1.90m)







Hills | Salfords Estate Agent

Hills Residential, Sentinel House Albert Street – M30 0SS

0161 707 4900

sales@hills.agency

www.hills.agency/



By law, we are required to conduct anti-money laundering checks on all potential buyers and sellers. In line with HMRC guidelines, our trusted partner, Coadjute, will securely manage these checks on our behalf. A non-refundable fee of £45 + VAT per person will apply, and Coadjute will handle the payment. Once an offer is accepted, Coadjute will send a secure link for you to complete the biometric checks. These checks must be completed before we can send the memorandum of sale to all parties. PLEASE NOTE: The Agent has not tested any equipment, fixtures, fittings or services so cannot verify that they are in working order or fit for the purpose. References to the properties tenure are based on information supplied by the seller. You are advised to check the availability of this property before travelling any distance to view. Every effort has been made to ensure these particulars are correct and not misleading but their accuracy is not guaranteed nor do they form part of any contract.