



Franklin Street, Eccles

Manchester



Offers Over **£210,000**

Franklin Street

Eccles, Manchester

Welcoming this terrace property with no chain. Family lounge, open-plan kitchen and dining. Three bedrooms, master with wardrobes. Modern wet room, W.C. Mature garden in front, potential for off-road parking. Low-maintenance rear garden. Close to amenities and transport links. Perfect for first-time buyers or families.

Council Tax band: B

Tenure: Freehold

- Offered to the Market with No Onward Chain
- Deceptively Spacious Terrace Property with Ample Storage Throughout
- Family Lounge and Open Plan Fitted Kitchen & Dining Space
- Three Generous Bedrooms, Master with Fitted Wardrobes
- Modern Wet Room & Downstairs W.C.
- Mature Garden to the Front Offering Potential for Off Road Parking & Low Maintenance Rear Garden
- Ideal First Time Buy or Family Home
- Short Walk to Patricroft Train Station, Eccles Centre & Monton Village
- Excellent Amenities Close by Including Shops, Parks & Local Schooling
- Surrounded by Brilliant Public Transport & Motorway Links



HILLS



Porch

6' 7" x 5' 6" (2.01m x 1.68m)

W.C

5' 5" x 3' 0" (1.65m x 0.91m)

Lounge

13' 1" x 12' 9" (3.99m x 3.89m)

Kitchen/Diner

20' 3" x 10' 7" (6.17m x 3.23m)

Bedroom One

12' 6" x 11' 0" (3.81m x 3.35m)

Bedroom Two

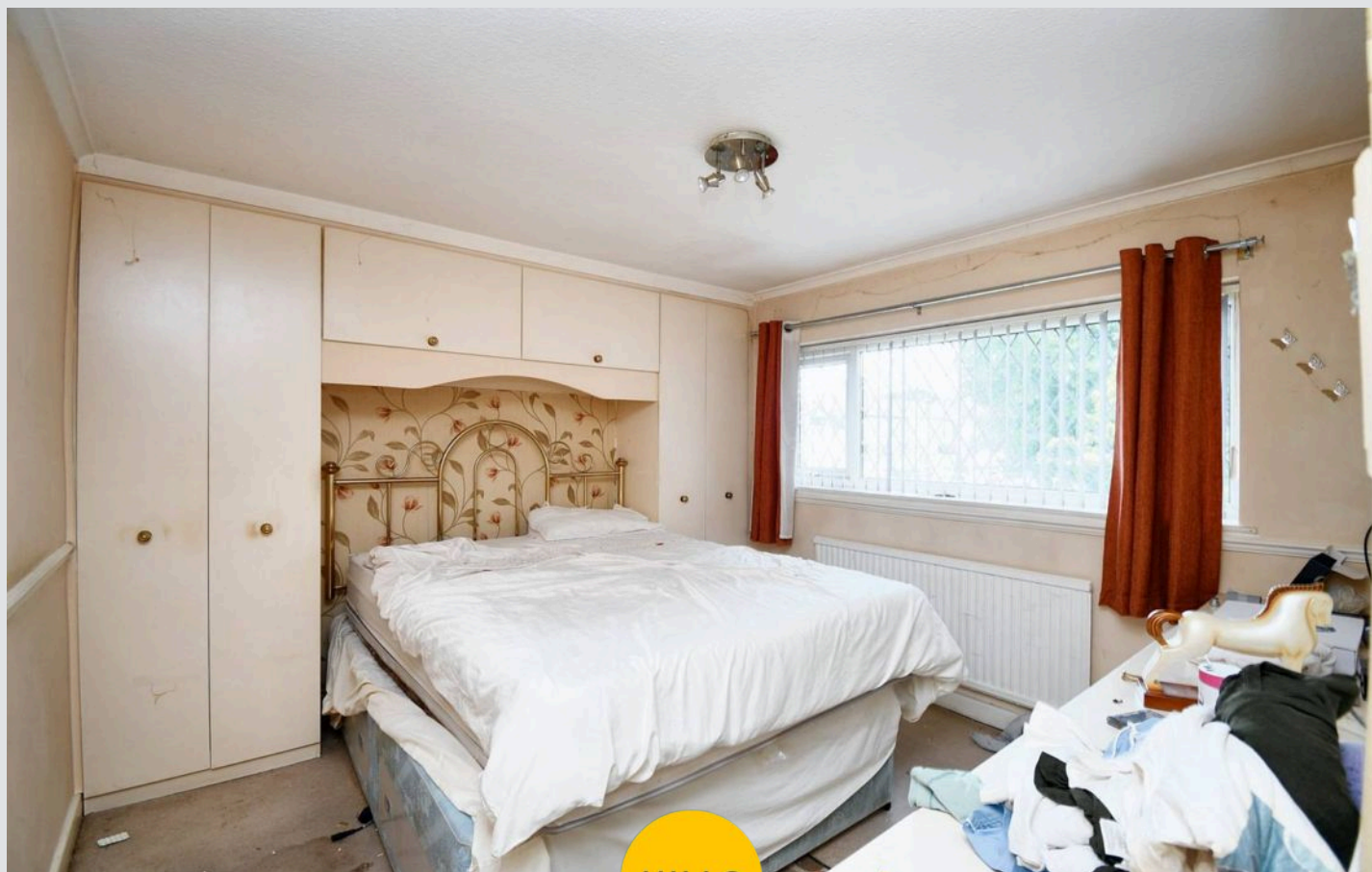
12' 6" x 11' 0" (3.81m x 3.35m)

Bedroom Three

9' 2" x 7' 4" (2.79m x 2.24m)

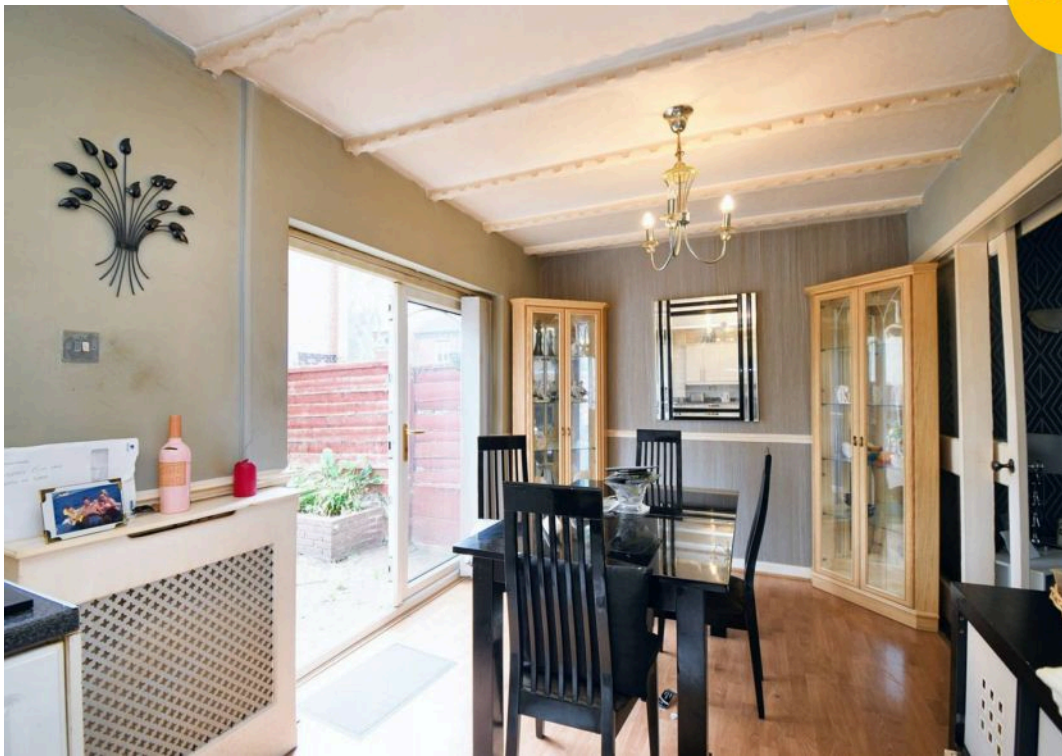
Bathroom

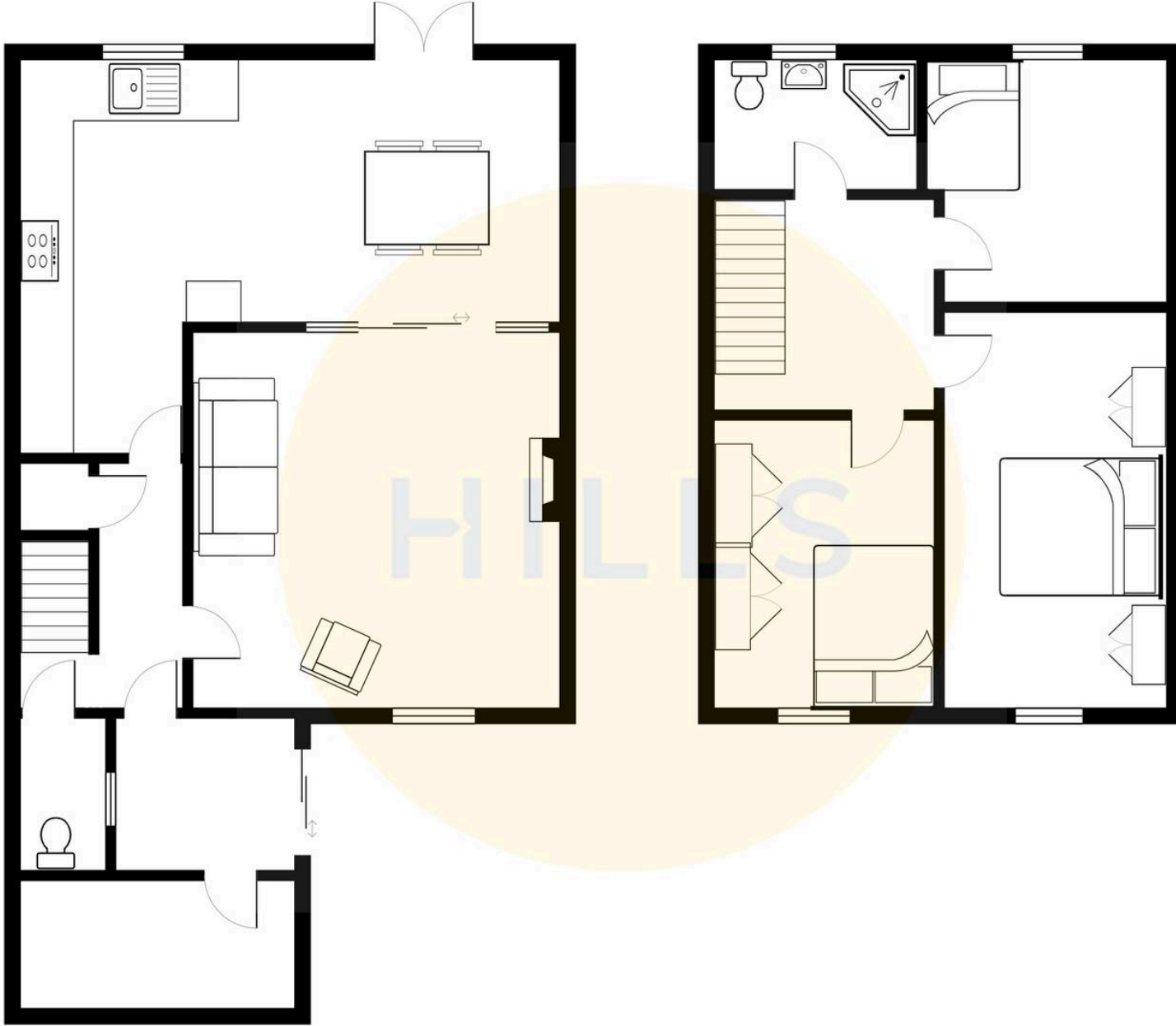
7' 2" x 5' 4" (2.18m x 1.63m)





HILLS







Hills | Salfords Estate Agent

Hills Residential, Sentinel House Albert Street – M30 0SS

0161 707 4900

sales@hills.agency

www.hills.agency/



THE PROPERTY MISDESCRIPTIONS ACT 1991 The Agent has not tested any apparatus, equipment, fixtures and fittings or services and so cannot verify that they are in working order or fit for the purpose. A Buyer is advised to obtain verification from their Solicitor or Surveyor. References to the Tenure of a Property are based on information supplied by the Seller. The Agent has not had sight of the title documents. A Buyer is advised to obtain verification from their Solicitor. You are advised to check the availability of this property before travelling any distance to view. Every effort and precaution has been made to ensure these particulars are correct and not misleading but their accuracy is not guaranteed nor do they form part of any contract. If there is any point which is of particular importance to you, please contact us and we will provide any information you require. This is advisable, particularly if you intend to travel some distance to view the property. The mention of any appliances and services within these details does not imply that they are in full and efficient working order. These particulars are in draft form awaiting Vendors confirmation of their accuracy. These details must therefore be taken as a guide only.