

Claremont Road, Salford

Salford

HILLS

£300,000

Claremont Road

Salford, Salford

Stunning home that is available with NO CHAIN and features a CONVERTED CELLAR, OPEN PLAN LIVING, MODERN FITTED KITCHEN AND BATHROOM, MASTER BEDROOM complete with FREE-STANDING BATH and access to a well-kept RESIDENTS GARDEN to the rear! Council Tax band: A

Tenure: Freehold



HILLS



Entrance Hallway

Reception Room One

12' 2" x 10' 6" (3.71m x 3.21m)

Reception Room Two

12' 8" x 11' 3" (3.86m x 3.43m)

Kitchen

13' 6" x 7' 1" (4.12m x 2.15m)

Cellar

14' 4" x 8' 2" (4.36m x 2.49m)

Cellar W.C.

3' 4" x 3' 0" (1.02m x 0.92m)



Bedroom One

19' 5" x 13' 0" (5.91m x 3.97m)

Bedroom Two

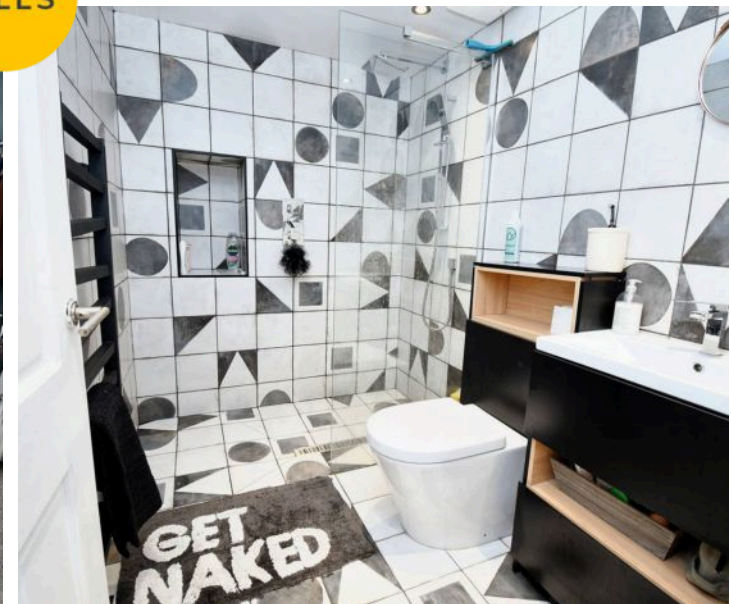
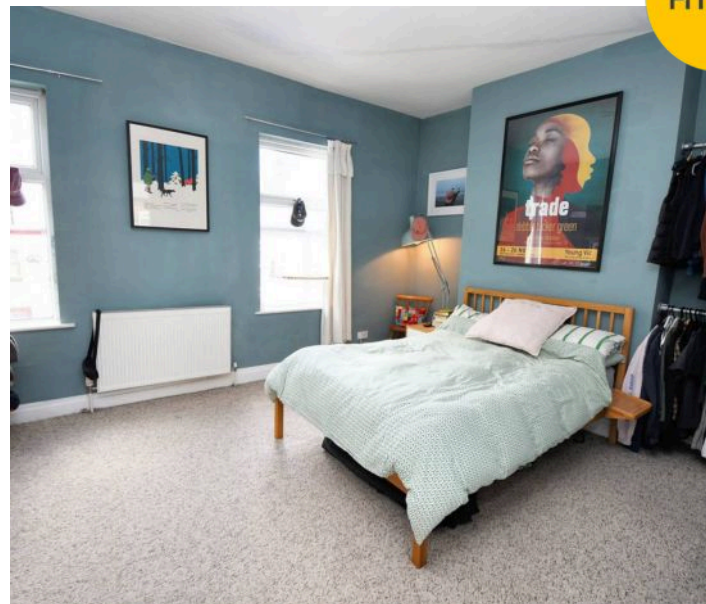
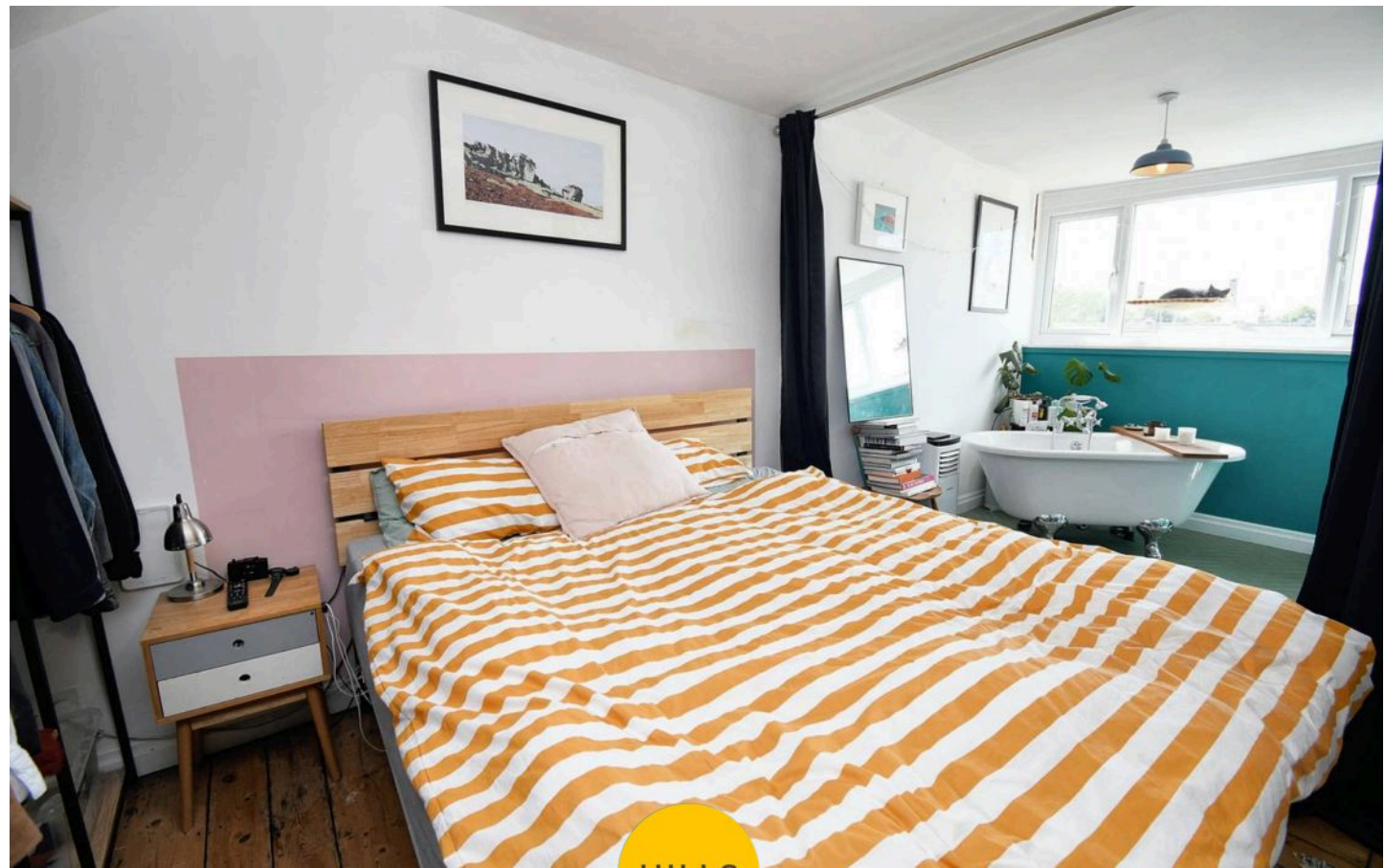
14' 4" x 12' 1" (4.37m x 3.68m)

Bedroom Three

9' 3" x 12' 1" (2.82m x 3.68m)

Bathroom

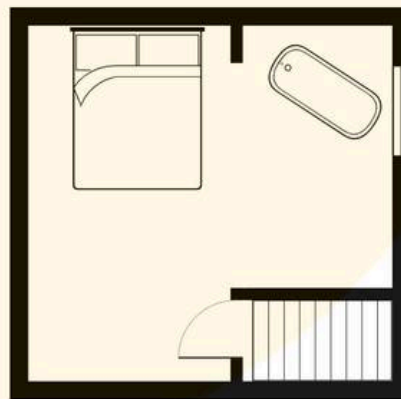
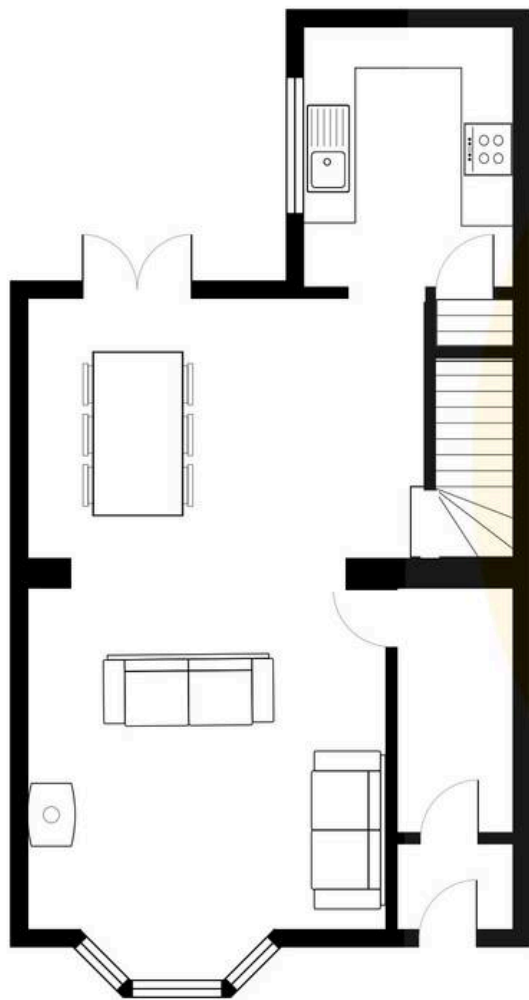
7' 6" x 5' 4" (2.29m x 1.62m)





HILLS







Hills | Salfords Estate Agent

Hills Residential, Sentinel House Albert Street – M30 0SS

0161 707 4900

sales@hills.agency

www.hills.agency/



By law, we are required to conduct anti-money laundering checks on all potential buyers and sellers. In line with HMRC guidelines, our trusted partner, Coadjute, will securely manage these checks on our behalf. A non-refundable fee of £45 + VAT per person will apply, and Coadjute will handle the payment. Once an offer is accepted, Coadjute will send a secure link for you to complete the biometric checks. These checks must be completed before we can send the memorandum of sale to all parties. PLEASE NOTE: The Agent has not tested any equipment, fixtures, fittings or services so cannot verify that they are in working order or fit for the purpose. References to the properties tenure are based on information supplied by the seller. You are advised to check the availability of this property before travelling any distance to view. Every effort has been made to ensure these particulars are correct and not misleading but their accuracy is not guaranteed nor do they form part of any contract.