



Bradgreen Road, Eccles

Manchester



Offers in Region of **£250,000**

Bradgreen Road

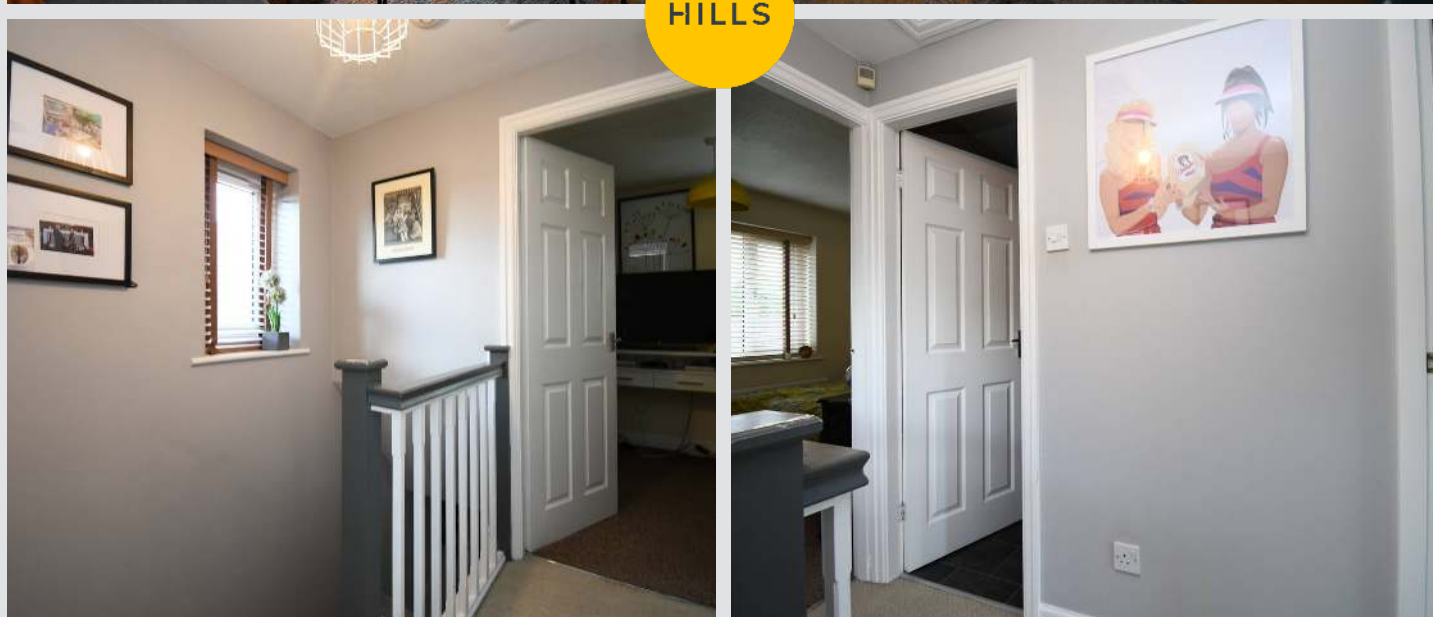
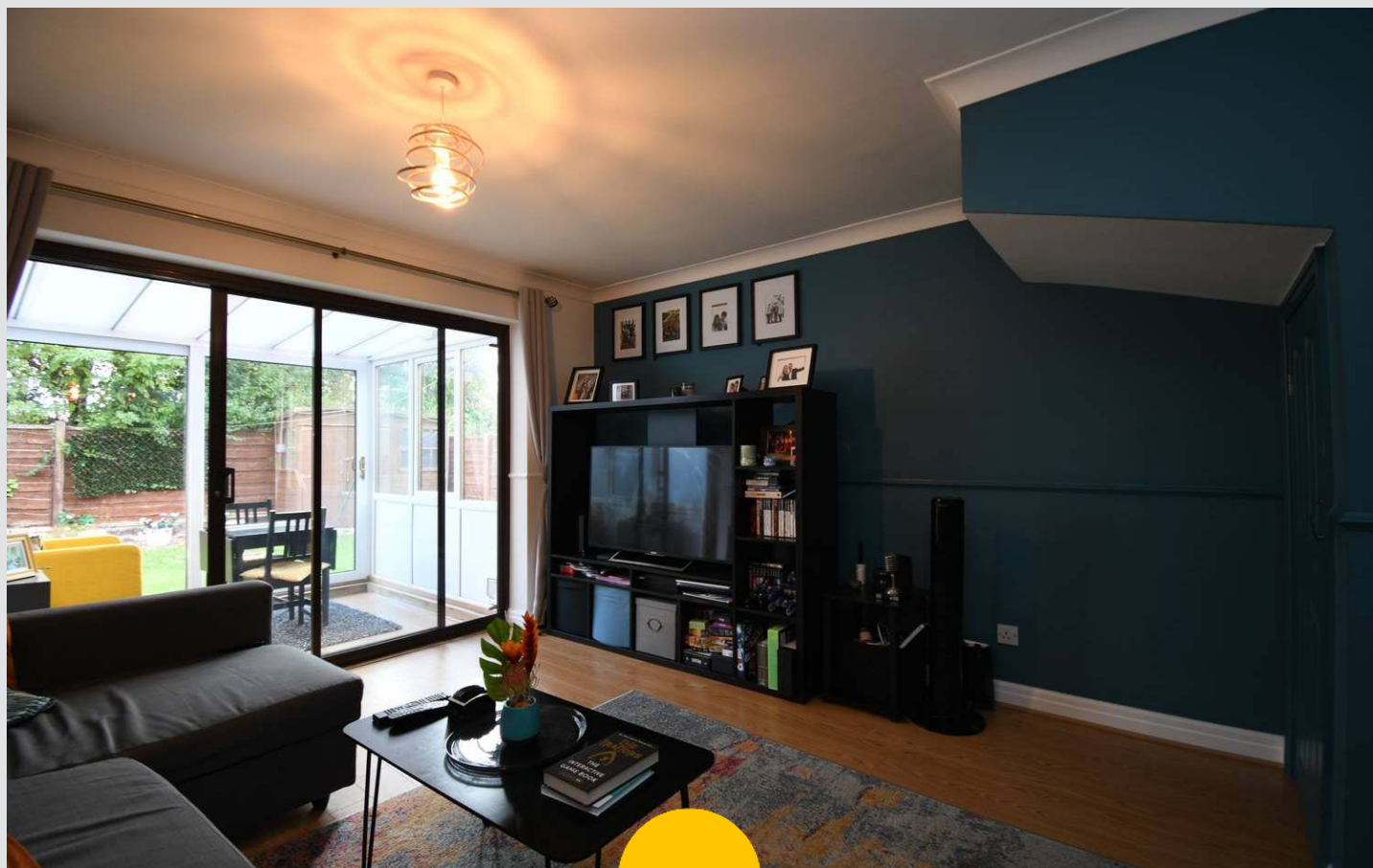
Eccles, Manchester

Lovely first-time buyer's home on quiet cul-de-sac near Monton Village. Open plan lounge, dining room, conservatory, fitted kitchen. Two double bedrooms with fitted wardrobes, shower room. Off-road parking, garage. Close to shops, bars, and transport links.

Council Tax band: C

Tenure: Freehold

- Perfect First Time Buy, Tucked away on a Quiet Cul DeSac just a Short Walk to Monton Village
- Open Plan Lounge and Dining Room along with a Conservatory
- Fitted Kitchen
- Two Double Bedrooms Complete with Fitted Wardrobes
- Off Road Parking and Garage with Front & Rear Access
- Surrounded by a Plethora of Amenities including Shops, Bars & Restaurants
- Well Served by Public Transport and Motorway Links



Kitchen

27' 11" x 19' 8" (8.50m x 6.00m)

Lounge

57' 1" x 40' 8" (17.40m x 12.40m)

Conservatory

27' 11" x 23' 11" (8.50m x 7.30m)

Bedroom One

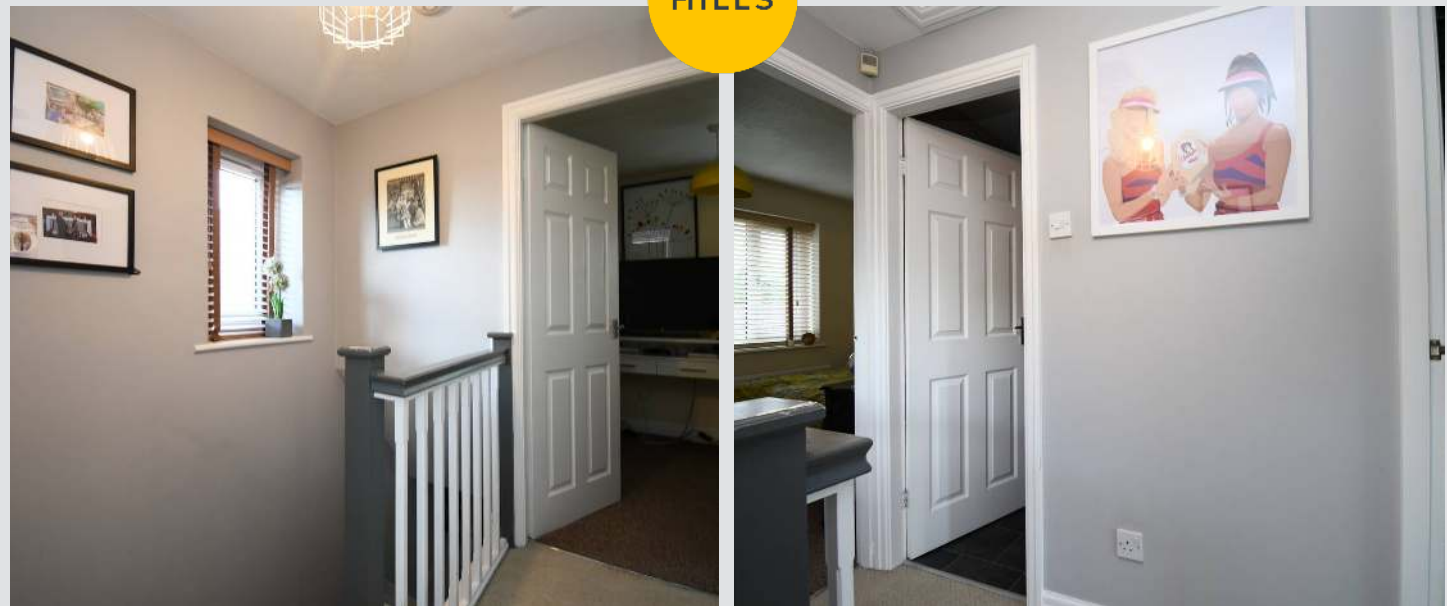
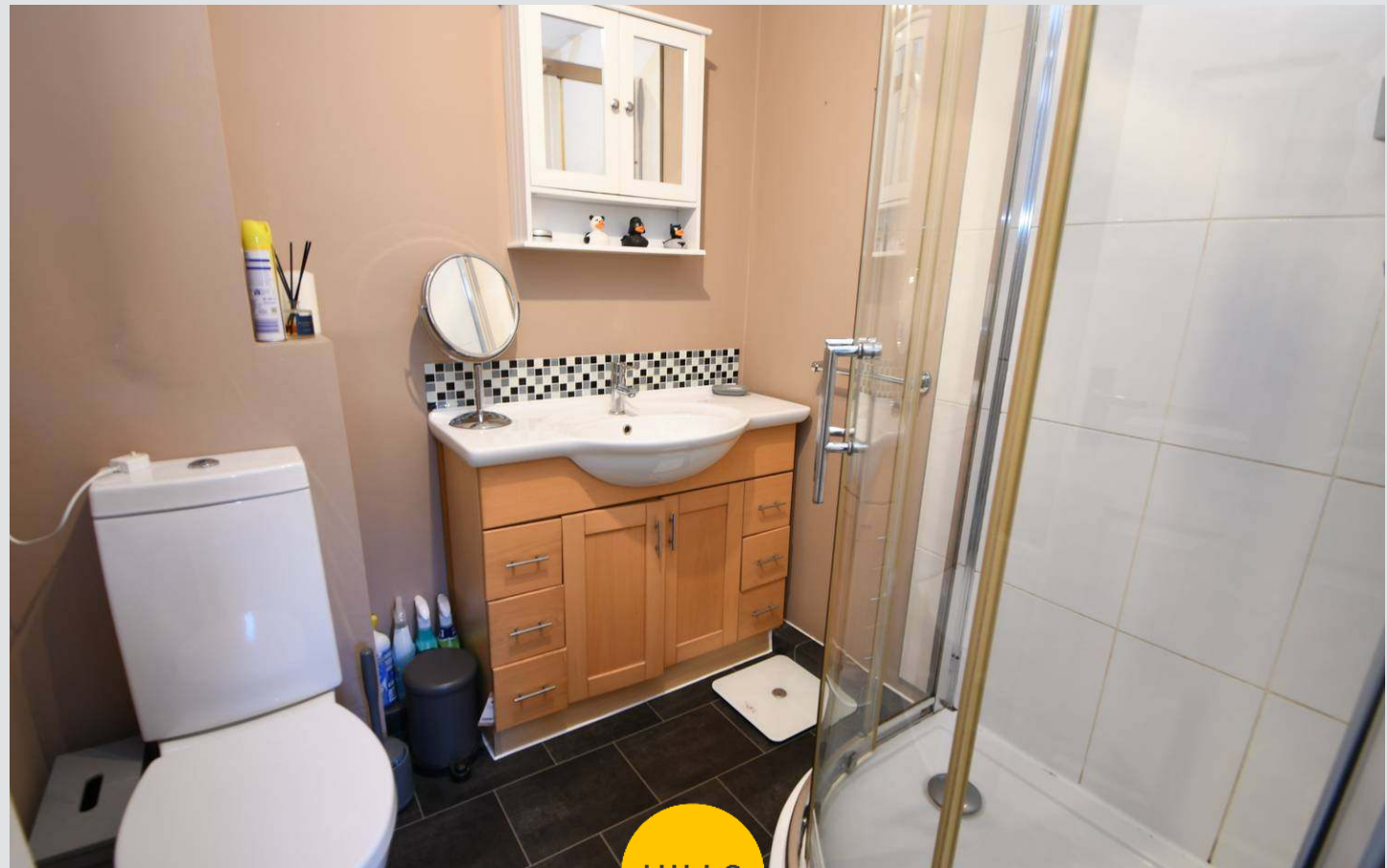
34' 1" x 30' 6" (10.40m x 9.30m)

Bedroom Two

33' 10" x 23' 7" (10.30m x 7.20m)

Shower Room

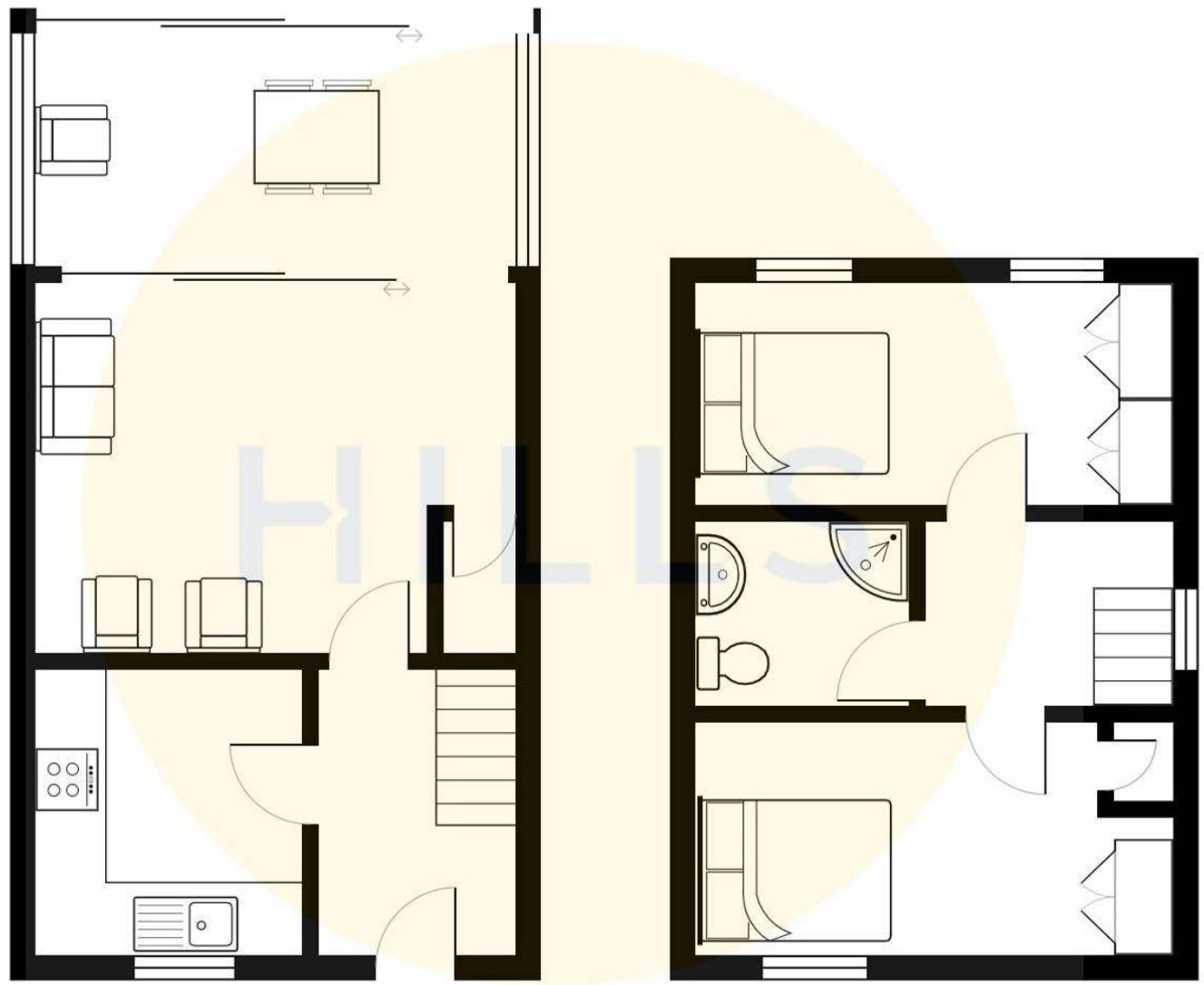
19' 0" x 20' 4" (5.80m x 6.20m)





HILLS







Hills | Salfords Estate Agent

Hills Residential, Sentinel House Albert Street - M30 0SS

0161 707 4900

sales@hills.agency

www.hills.agency/



By law, we are required to conduct anti-money laundering checks on all potential buyers and sellers. In line with HMRC guidelines, our trusted partner, Coadjute, will securely manage these checks on our behalf. A non-refundable fee of £45 + VAT per person will apply, and Coadjute will handle the payment. Once an offer is accepted, Coadjute will send a secure link for you to complete the biometric checks. These checks must be completed before we can send the memorandum of sale to all parties. PLEASE NOTE: The Agent has not tested any equipment, fixtures, fittings or services so cannot verify that they are in working order or fit for the purpose. References to the properties tenure are based on information supplied by the seller. You are advised to check the availability of this property before travelling any distance to view. Every effort has been made to ensure these particulars are correct and not misleading but their accuracy is not guaranteed nor do they form part of any contract.