



Bedford Grove, Cadishead
Manchester



Offers Over £200,000

Bedford Grove

Cadishead, Manchester

Deceptively spacious property on quiet cul-de-sac. Family lounge, second reception, conservatory, three bedrooms, garden with views. Convenient location. Endless potential to customize and extend. Council Tax band: A

Tenure: Freehold

- Tucked away on a Quiet Cul De Sac is this Deceptively Spacious Property
- Spacious Family Lounge & Second Reception Room and Conservatory
- Fitted Kitchen
- Three Generously Sized Bedrooms
- Three Piece Bathroom Suite
- Gardens to the Front & Rear, with Stunning Views of the Fields to the Back
- Well Served by Local Amenities & Transport Links
- Potential to Add you own Stamp



Living Room

13' 9" x 11' 5" (4.19m x 3.48m)

Dining Room

8' 8" x 8' 8" (2.64m x 2.64m)

Kitchen

11' 6" x 8' 8" (3.51m x 2.64m)

Conservatory

15' 1" x 6' 4" (4.60m x 1.93m)

Bedroom One

14' 0" x 11' 6" (4.27m x 3.51m)

Bedroom Two

14' 1" x 8' 9" (4.29m x 2.67m)

Bedroom Three

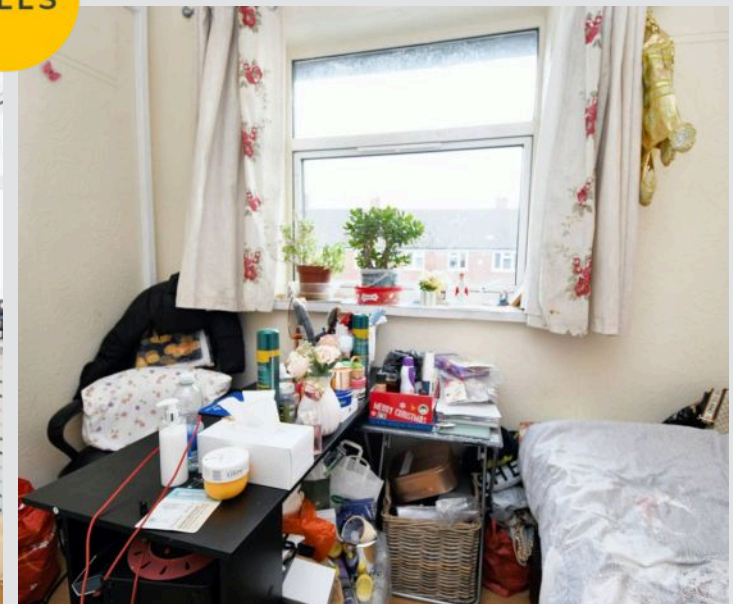
9' 3" x 7' 3" (2.82m x 2.21m)

Bathroom

8' 1" x 5' 5" (2.46m x 1.65m)



HILLS







HILLS

Hills | Salfords Estate Agent

Hills Residential, Sentinel House Albert Street – M30 0SS

0161 707 4900

sales@hills.agency

www.hills.agency/



By law, we are required to conduct anti-money laundering checks on all potential buyers and sellers. In line with HMRC guidelines, our trusted partner, Coadjute, will securely manage these checks on our behalf. A non-refundable fee of £45 + VAT per person will apply, and Coadjute will handle the payment. Once an offer is accepted, Coadjute will send a secure link for you to complete the biometric checks. These checks must be completed before we can send the memorandum of sale to all parties. PLEASE NOTE: The Agent has not tested any equipment, fixtures, fittings or services so cannot verify that they are in working order or fit for the purpose. References to the properties tenure are based on information supplied by the seller. You are advised to check the availability of this property before travelling any distance to view. Every effort has been made to ensure these particulars are correct and not misleading but their accuracy is not guaranteed nor do they form part of any contract.