



Withington Drive, Astley

Manchester



£350,000

52 Withington Drive

Astley, Manchester

****Immaculately Presented, Extended Four Bedroom Semi-Detached Family Home, Located in the Popular Astley Area! Featuring a Modern Fitted Kitchen with a Skylight, a Home Office and a Large Garden!****
Council Tax band: C

Tenure: Leasehold

- Immaculately Presented Four Bedroom Semi-Detached Family Home
- Located in the Popular Astley Area, Close to Garrett Hall Primary School
- Boasting a Large Family Lounge and a Spacious Dining Room with Patio Doors to the Rear
- Benefits from an Office and a Large Storage Cupboard
- Beautifully Presented Modern Fitted Kitchen with Integrated Appliances, a Larder Cupboard and a Skylight
- Double Storey Plus Single Storey Extended
- Four Well-Proportioned Bedrooms
- Modern Four-Piece Family Bathroom
- Driveway to the Front for Off-Road Parking
- Large Landscaped Garden to the Rear with Indian Stone Paving, Laid-to-Lawn Grass and Mature Plants



HILLS

Porch

Lounge

16' 1" x 12' 7" (4.91m x 3.83m)

Dining Room

17' 10" x 11' 3" (5.44m x 3.43m)

Office

7' 9" x 4' 10" (2.37m x 1.48m)

Storage Cupboard

Kitchen

17' 10" x 9' 5" (5.44m x 2.88m)

Landing

Bedroom One

12' 6" x 10' 4" (3.82m x 3.16m)

Inbuilt Wardrobe

Bedroom Two

13' 2" x 9' 8" (4.01m x 2.94m)

Inbuilt Wardrobe

Bedroom Three

10' 4" x 7' 11" (3.16m x 2.42m)

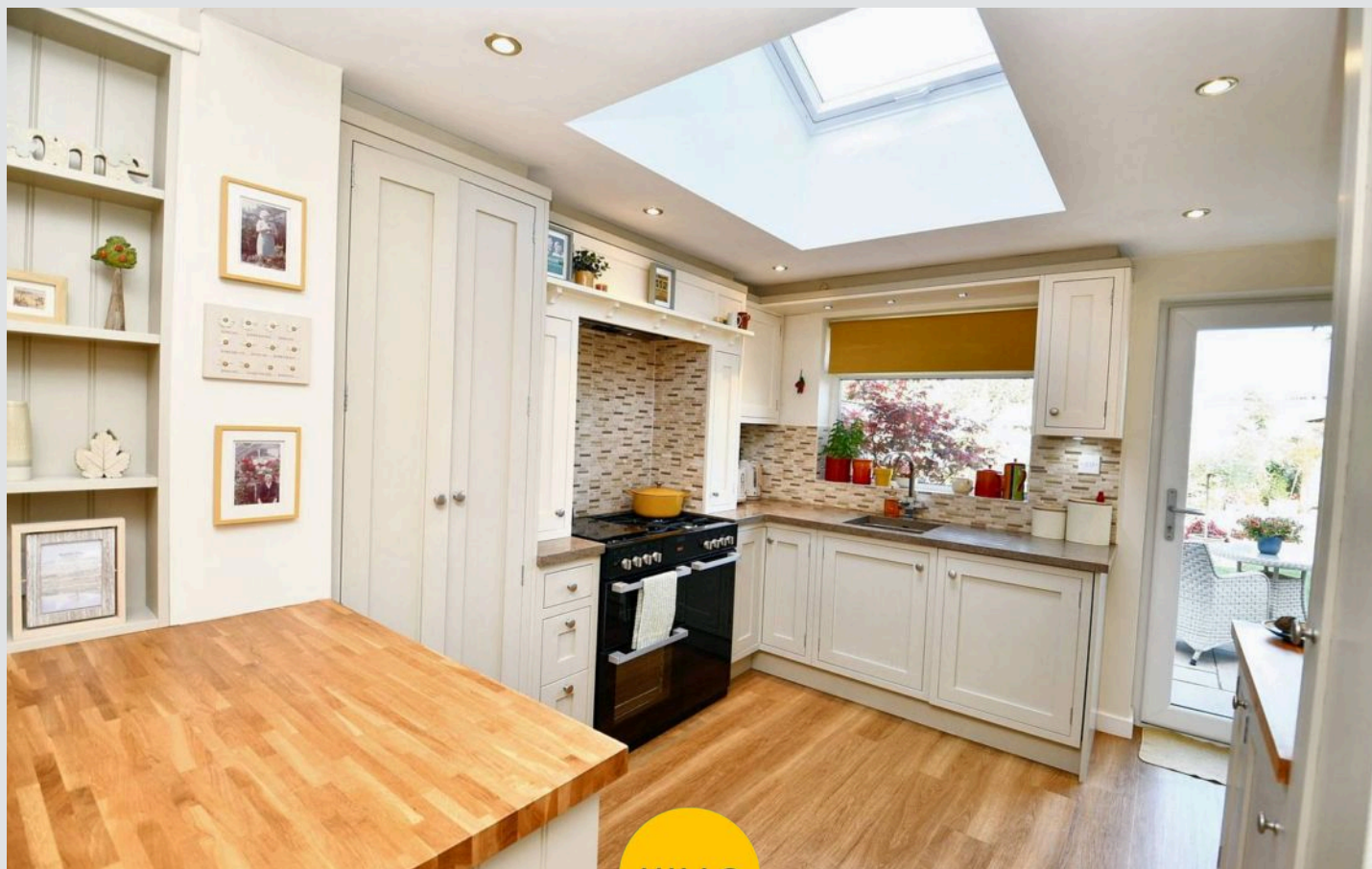
Inbuilt Wardrobe

Bedroom Four

10' 1" x 8' 0" (3.08m x 2.45m)

Family Bathroom

7' 11" x 7' 5" (2.41m x 2.25m)



HILLS



Porch

Lounge

16' 1" x 12' 7" (4.91m x 3.83m)

Dining Room

17' 10" x 11' 3" (5.44m x 3.43m)

Office

7' 9" x 4' 10" (2.37m x 1.48m)

Storage Cupboard

Kitchen

17' 10" x 9' 5" (5.44m x 2.88m)

Landing

Bedroom One

12' 6" x 10' 4" (3.82m x 3.16m)

Inbuilt Wardrobe

Bedroom Two

13' 2" x 9' 8" (4.01m x 2.94m)

Inbuilt Wardrobe

Bedroom Three

10' 4" x 7' 11" (3.16m x 2.42m)

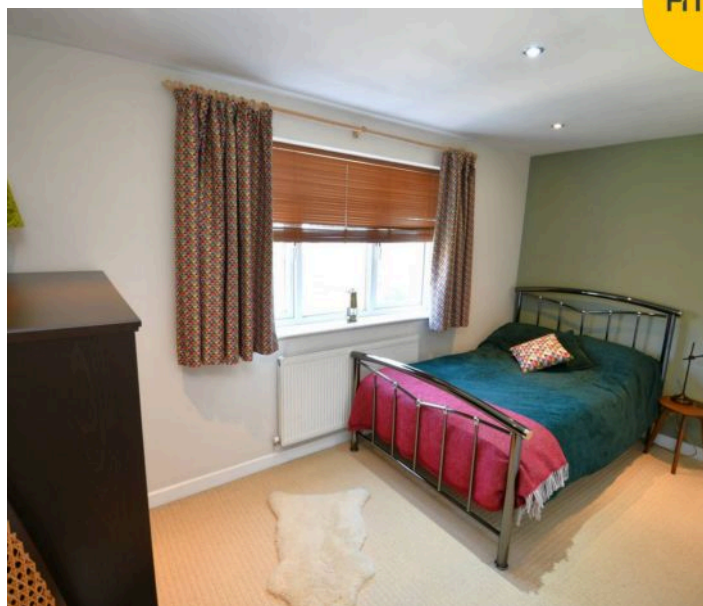
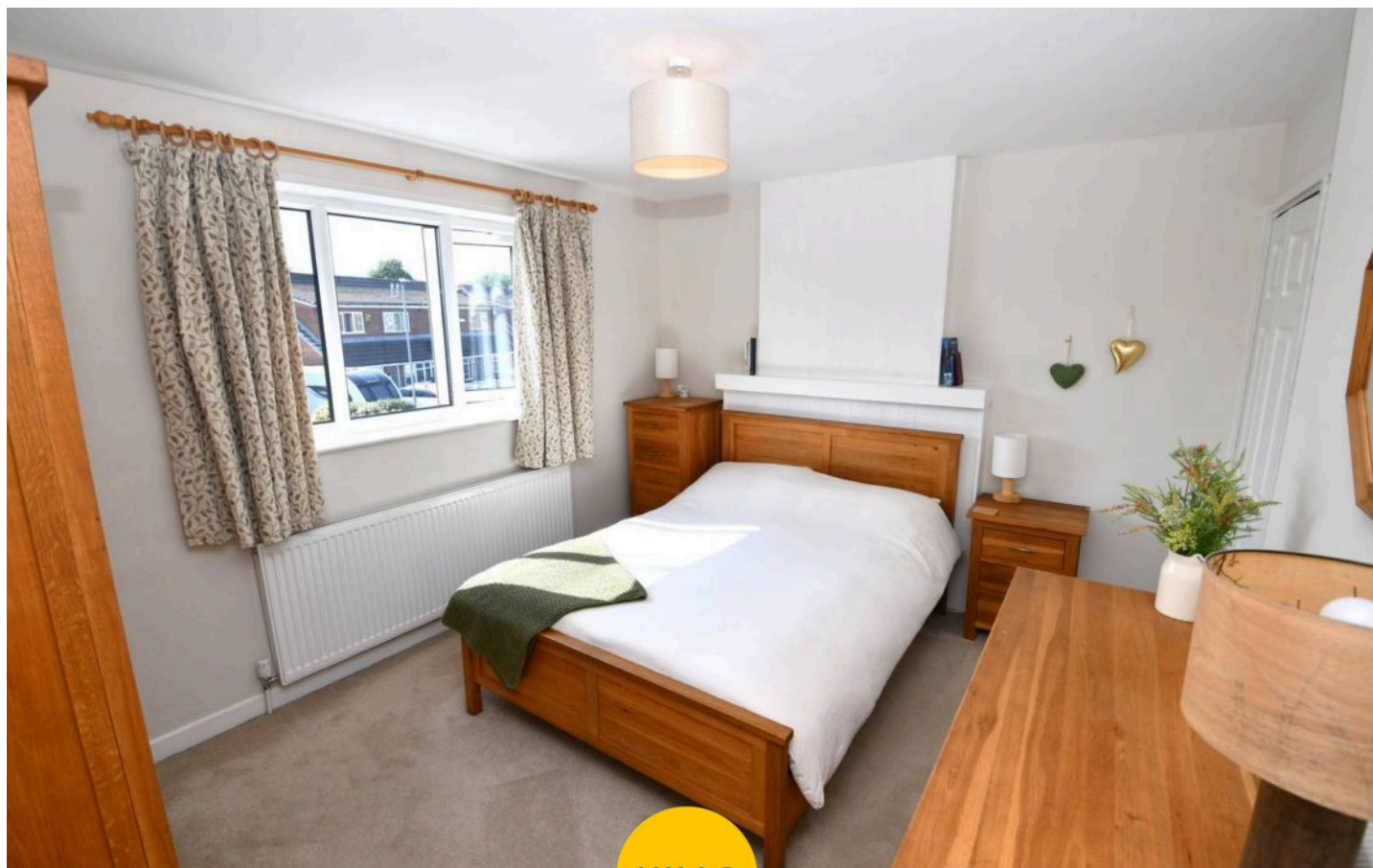
Inbuilt Wardrobe

Bedroom Four

10' 1" x 8' 0" (3.08m x 2.45m)

Family Bathroom

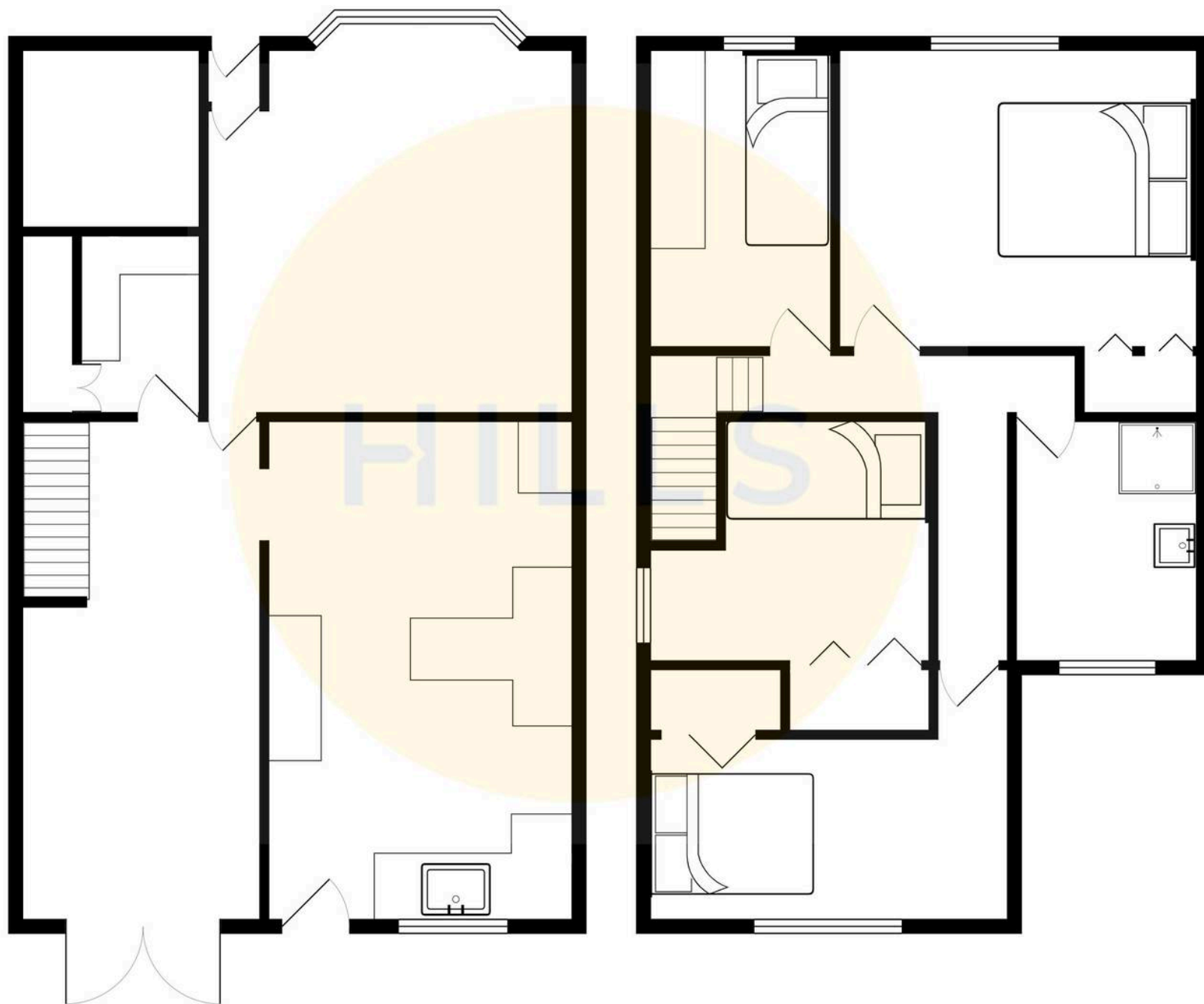
7' 11" x 7' 5" (2.41m x 2.25m)





HILLS







Hills | Salfords Estate Agent

Hills Residential, Sentinel House Albert Street – M30 0SS

0161 707 4900

sales@hills.agency

www.hills.agency/



THE PROPERTY MISDESCRIPTIONS ACT 1991 The Agent has not tested any apparatus, equipment, fixtures and fittings or services and so cannot verify that they are in working order or fit for the purpose. A Buyer is advised to obtain verification from their Solicitor or Surveyor. References to the Tenure of a Property are based on information supplied by the Seller. The Agent has not had sight of the title documents. A Buyer is advised to obtain verification from their Solicitor. You are advised to check the availability of this property before travelling any distance to view. Every effort and precaution has been made to ensure these particulars are correct and not misleading but their accuracy is not guaranteed nor do they form part of any contract. If there is any point which is of particular importance to you, please contact us and we will provide any information you require. This is advisable, particularly if you intend to travel some distance to view the property. The mention of any appliances and services within these details does not imply that they are in full and efficient working order. These particulars are in draft form awaiting Vendors confirmation of their accuracy. These details must therefore be taken as a guide only.