



Verdun Road, Eccles

Manchester

HILLS

£225,000

Verdun Road

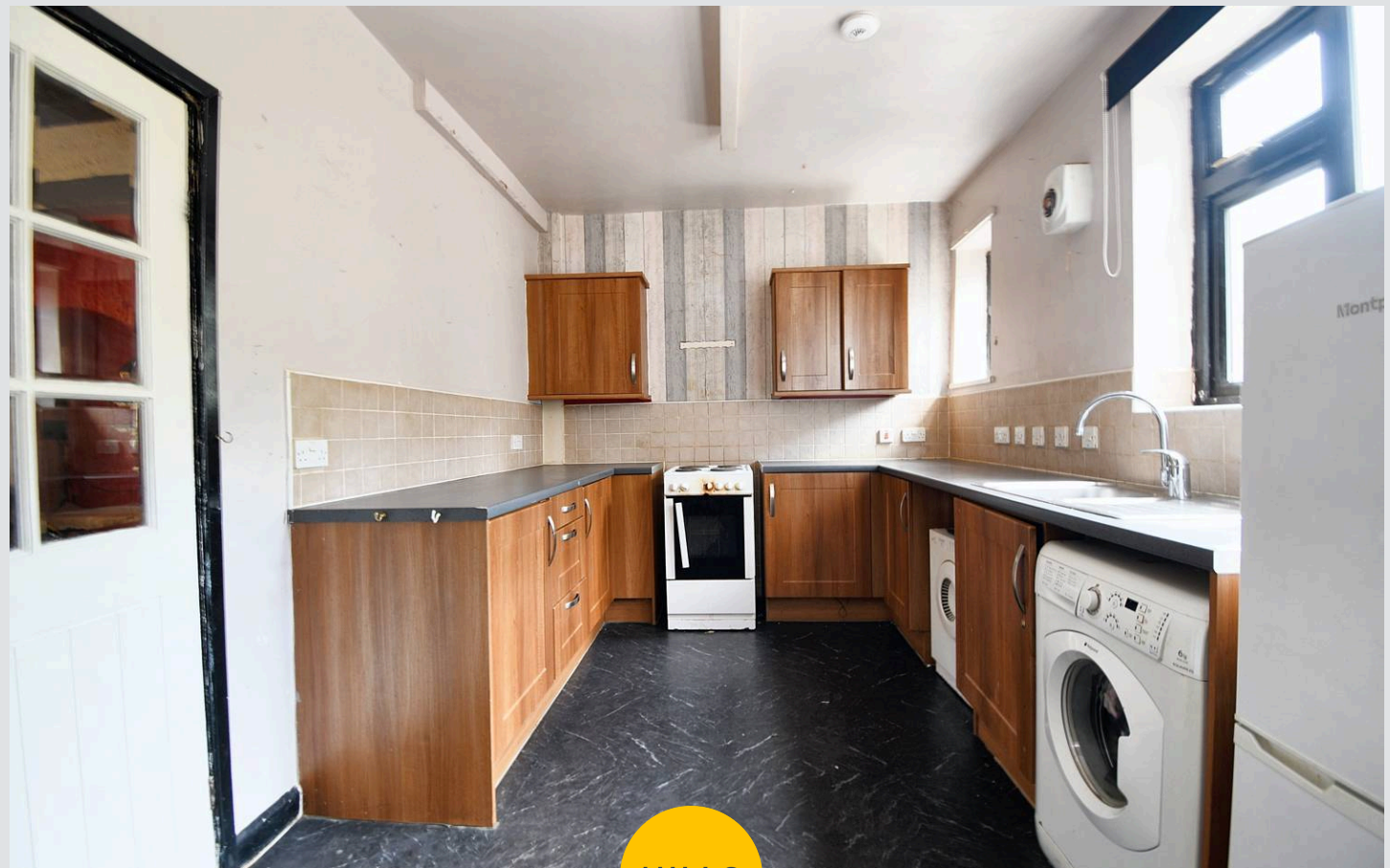
Eccles, Manchester

THREE BEDROOM TERRACED PROPERTY SITUATED WITHIN WALKING DISTANCE OF MONTON VILLAGE AND COMING TO THE MARKET CHAIN FREE! FEATURING THREE GENEROUS SIZED BEDROOMS AND A THREE-PIECE BATHROOM SUITE!

Council Tax band: A

Tenure: Freehold

- Offered to the market with NO ONWARD CHAIN !
- Three double bedrooms
- Three piece family bathroom suite and wet room to the ground floor
- Fabulous first time buy or family home
- Bay fronted lounge
- Open plan fitted kitchen and dining space
- Gated off road parking to the front
- Short walk to Monton and Worsley Villages
- Early viewing is essential
- Surrounded by excellent local amenities and well served by brilliant transport links



HILLS

Living Room

15' 9" x 10' 9" (4.80m x 3.28m)

Kitchen

18' 7" x 8' 9" (5.66m x 2.67m)

Wet Room

6' 2" x 6' 1" (1.88m x 1.85m)

Bedroom One

15' 0" x 10' 1" (4.57m x 3.07m)

Bedroom Two

10' 1" x 8' 4" (3.07m x 2.54m)

Bedroom Three

10' 7" x 5' 9" (3.23m x 1.75m)

Bathroom

6' 8" x 6' 3" (2.03m x 1.91m)







Hills | Salfords Estate Agent

Hills Residential, Sentinel House Albert Street – M30 0SS

0161 707 4900

sales@hills.agency

www.hills.agency/



By law, we are required to conduct anti-money laundering checks on all potential buyers and sellers. In line with HMRC guidelines, our trusted partner, Coadjute, will securely manage these checks on our behalf. A non-refundable fee of £45 + VAT per person will apply, and Coadjute will handle the payment. Once an offer is accepted, Coadjute will send a secure link for you to complete the biometric checks. These checks must be completed before we can send the memorandum of sale to all parties. PLEASE NOTE: The Agent has not tested any equipment, fixtures, fittings or services so cannot verify that they are in working order or fit for the purpose. References to the properties tenure are based on information supplied by the seller. You are advised to check the availability of this property before travelling any distance to view. Every effort has been made to ensure these particulars are correct and not misleading but their accuracy is not guaranteed nor do they form part of any contract.