



Sutherland Street, Eccles

Manchester

HILLS

Offers Over £280,000



# Sutherland Street

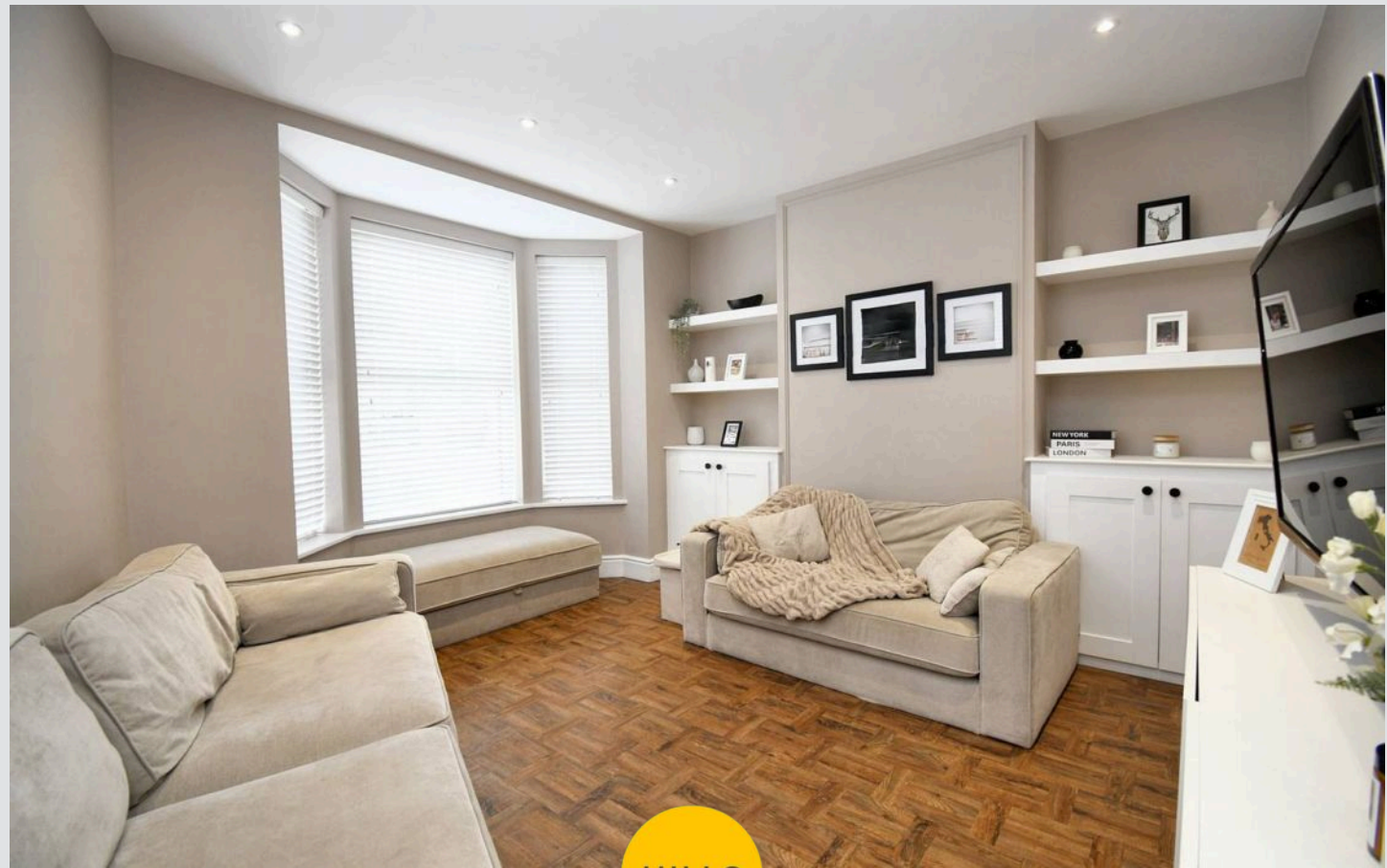
Eccles, Manchester

Beautifully renovated terrace property in Winton Village, steps from Winton Park. Three double bedrooms, open plan living, guest W.C., artificial lawn garden, gated parking. Ideal location near schools, amenities, and transport links. Perfect for families or first-time buyers.

Council Tax band: A

Tenure: Leasehold

- Beautifully Presented Terrace Property, Located in Winton Village just a Stones Throw from the Popular Winton Park
- Undergone a Full Renovation in the Last 8 Years
- Bay Fronted, Light and Spacious Lounge
- Impressive Open Plan Kitchen, Living & Dining Space with Central Island & Integrated Appliances
- Three Double Bedrooms
- Three Piece Family Bathroom, En Suite & Guest W.C.
- Low Maintenance Rear Garden with Artificial Lawn & Gated Off Road Parking
- Within Catchment for Sought After Schooling & Close to Brilliant Amenities and Transport Links



HILLS



## Hallway

## Lounge

14' 7" x 14' 3" (4.45m x 4.34m)

## Kitchen

20' 0" x 15' 3" (6.10m x 4.65m)

## Downstairs W.C.

6' 7" x 2' 8" (2.01m x 0.81m)

## Landing

Ceiling light point and carpeted floors.

## Bedroom One

14' 6" x 11' 8" (4.42m x 3.56m)

## Bedroom Two

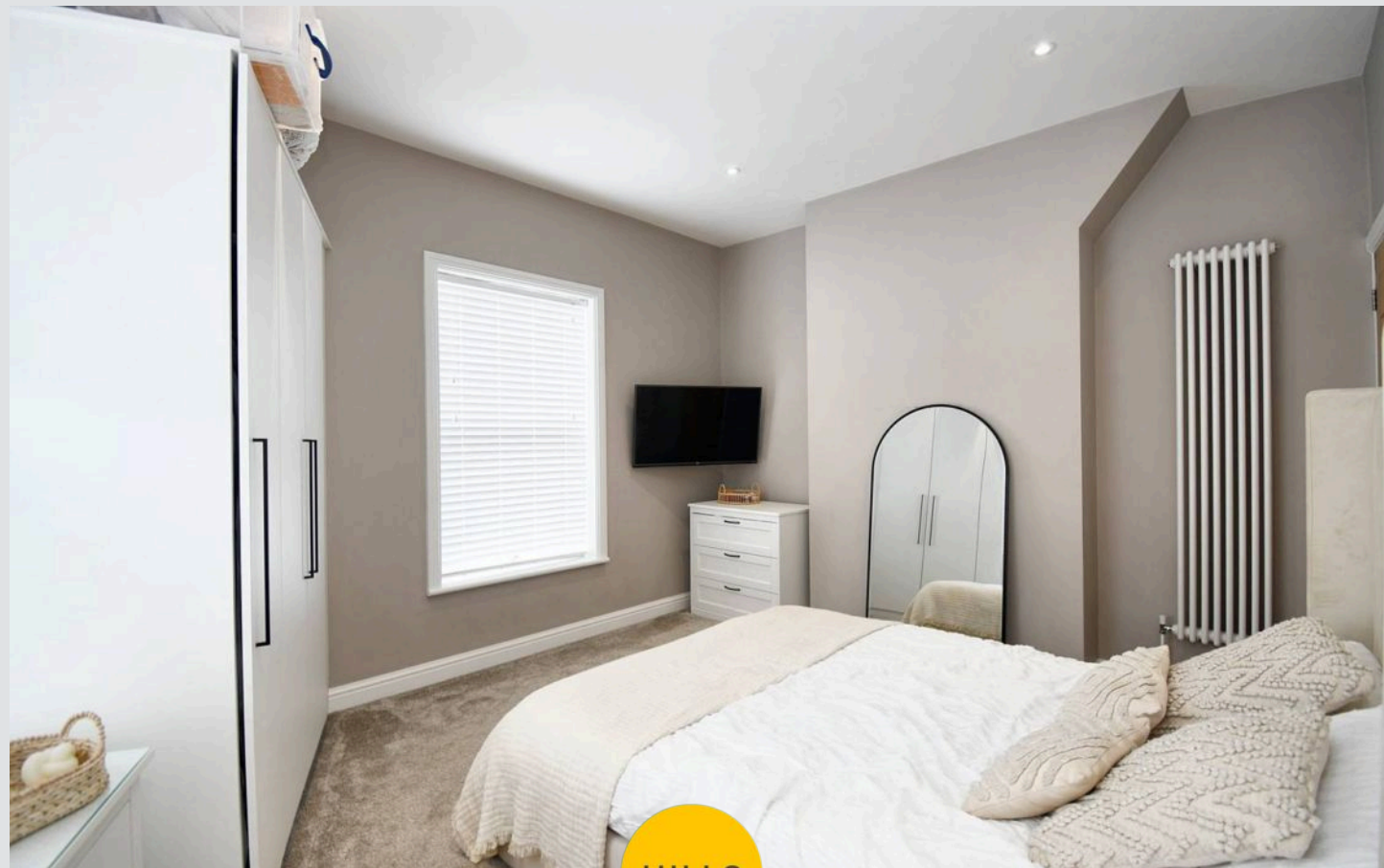
11' 3" x 9' 7" (3.43m x 2.92m)

## Bedroom Three

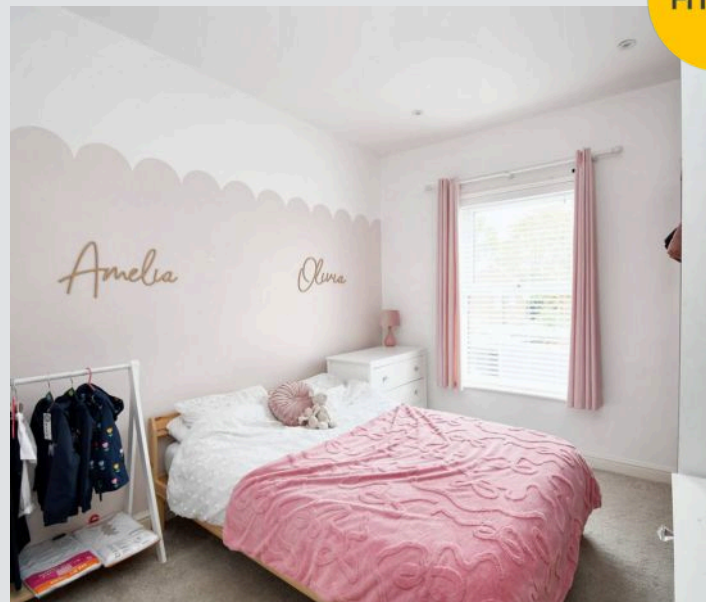
9' 4" x 8' 9" (2.84m x 2.67m)

## Bathroom

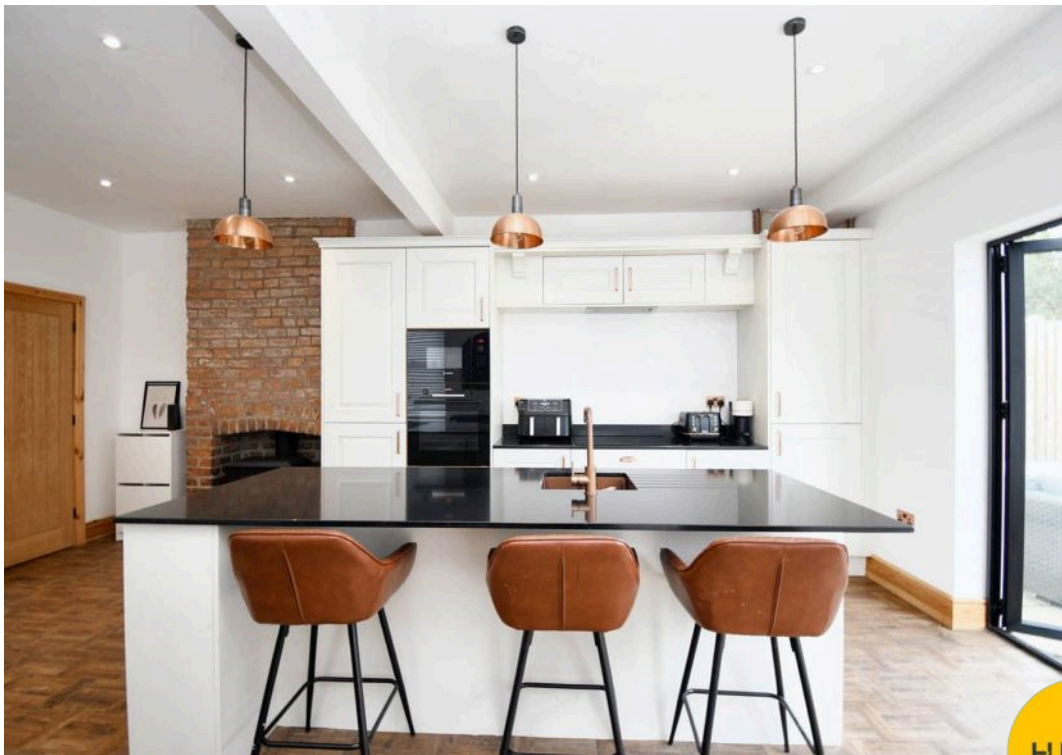
6' 6" x 5' 8" (1.98m x 1.73m)



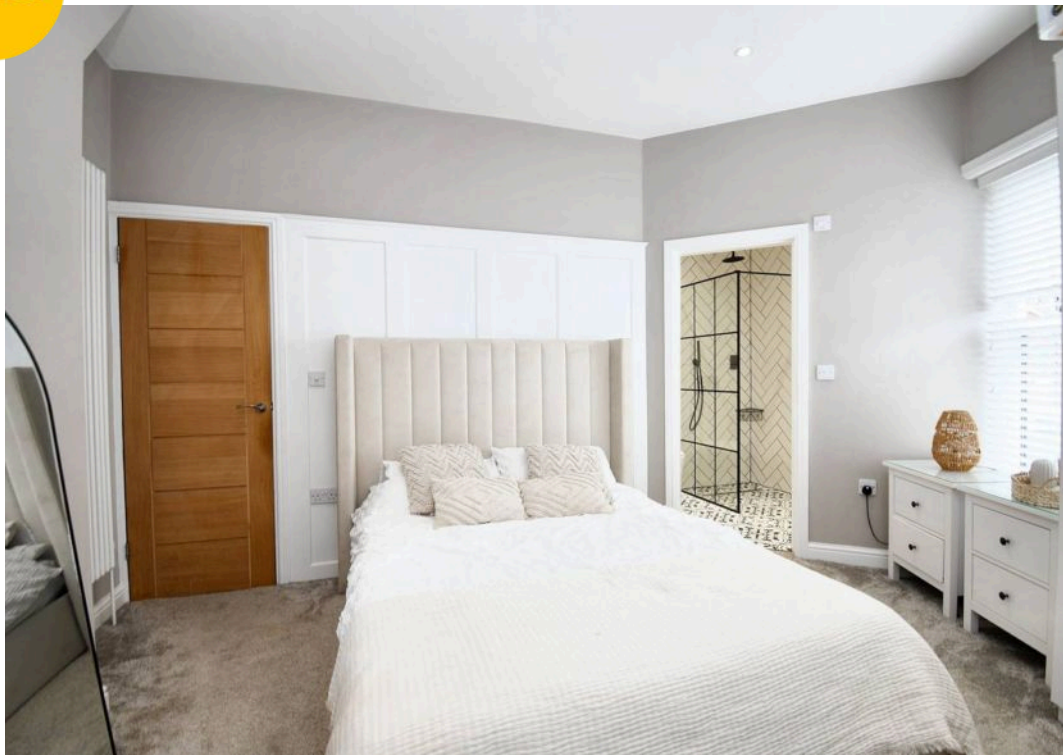
HILLS

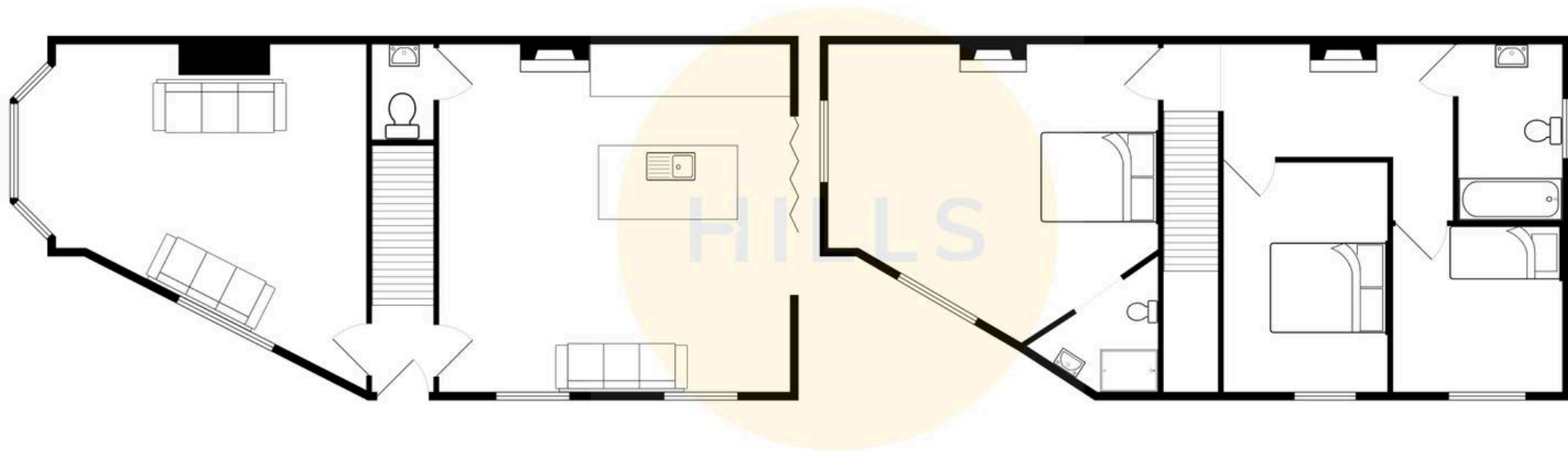






HILLS









## Hills | Salfords Estate Agent

Hills Residential, Sentinel House Albert Street – M30 0SS

0161 707 4900

[sales@hills.agency](mailto:sales@hills.agency)

[www.hills.agency/](http://www.hills.agency/)



THE PROPERTY MISDESCRIPTIONS ACT 1991 The Agent has not tested any apparatus, equipment, fixtures and fittings or services and so cannot verify that they are in working order or fit for the purpose. A Buyer is advised to obtain verification from their Solicitor or Surveyor. References to the Tenure of a

Property are based on information supplied by the Seller. The Agent has not had sight of the title documents. A Buyer is advised to obtain verification from their Solicitor. You are advised to check the availability of this property before travelling any distance to view. Every effort and precaution has been made to ensure these particulars are correct and not misleading but their accuracy is not guaranteed nor do they form part of any contract. If there is any point which is of particular importance to you, please contact us and we will provide any information you require. This is advisable, particularly if you intend to travel some distance to view the property. The mention of any appliances and services within these details does not imply that they are in full and efficient working order. These particulars are in draft form awaiting Vendors confirmation of their accuracy. These details must therefore be taken as a guide only.