



Roseway Avenue, Cadishead  
Manchester



In Excess of £405,000



# Roseway Avenue

Cadishead, Manchester

Situated on sought-after Hayes Green Development, this detached family home offers ample living space, modern features, four bedrooms, contemporary design, low-maintenance garden, and convenient location. Ideal for families seeking a stylish residence.

Council Tax band: D

Tenure: Leasehold

- Fabulous Detached Family Home Located on the Desirable Hayes Green Development
- Spacious Family Lounge with Bi Folding Doors Opening to Side Garden
- Open Plan Fitted Kitchen & Dining Space with Separate Utility
- Four Generous Bedrooms with Fitted Wardrobes
- Three Piece Family Bathroom, En Suite to Master with Underfloor Heating and Guest W.C.
- Low Maintenance Garden with Composite Decking and Indian Stone Patio
- Modern Built Property only 12 Years Old
- Surrounded by Excellent Local Amenities & Well Served by Public Transport Links





### Entrance Hallway

### Lounge

11' 1" x 20' 0" (3.37m x 6.09m)

### Dining Room

9' 1" x 9' 11" (2.77m x 3.03m)

### Kitchen

11' 9" x 9' 5" (3.57m x 2.87m)

### Utility Room

6' 7" x 5' 1" (2.01m x 1.55m)

### Landing

### Bedroom One

11' 5" x 12' 4" (3.47m x 3.76m)

### En suite

6' 9" x 4' 6" (2.07m x 1.38m)

### Bedroom Two

11' 3" x 9' 7" (3.42m x 2.91m)

### Bedroom Three

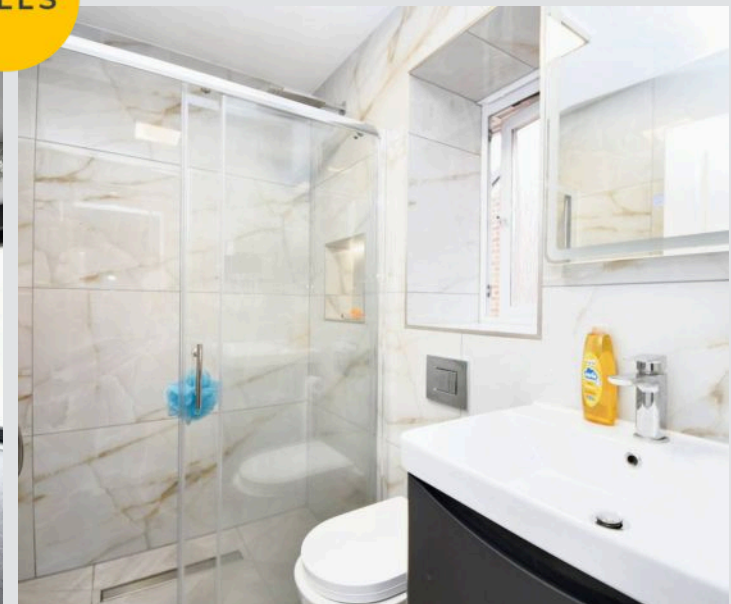
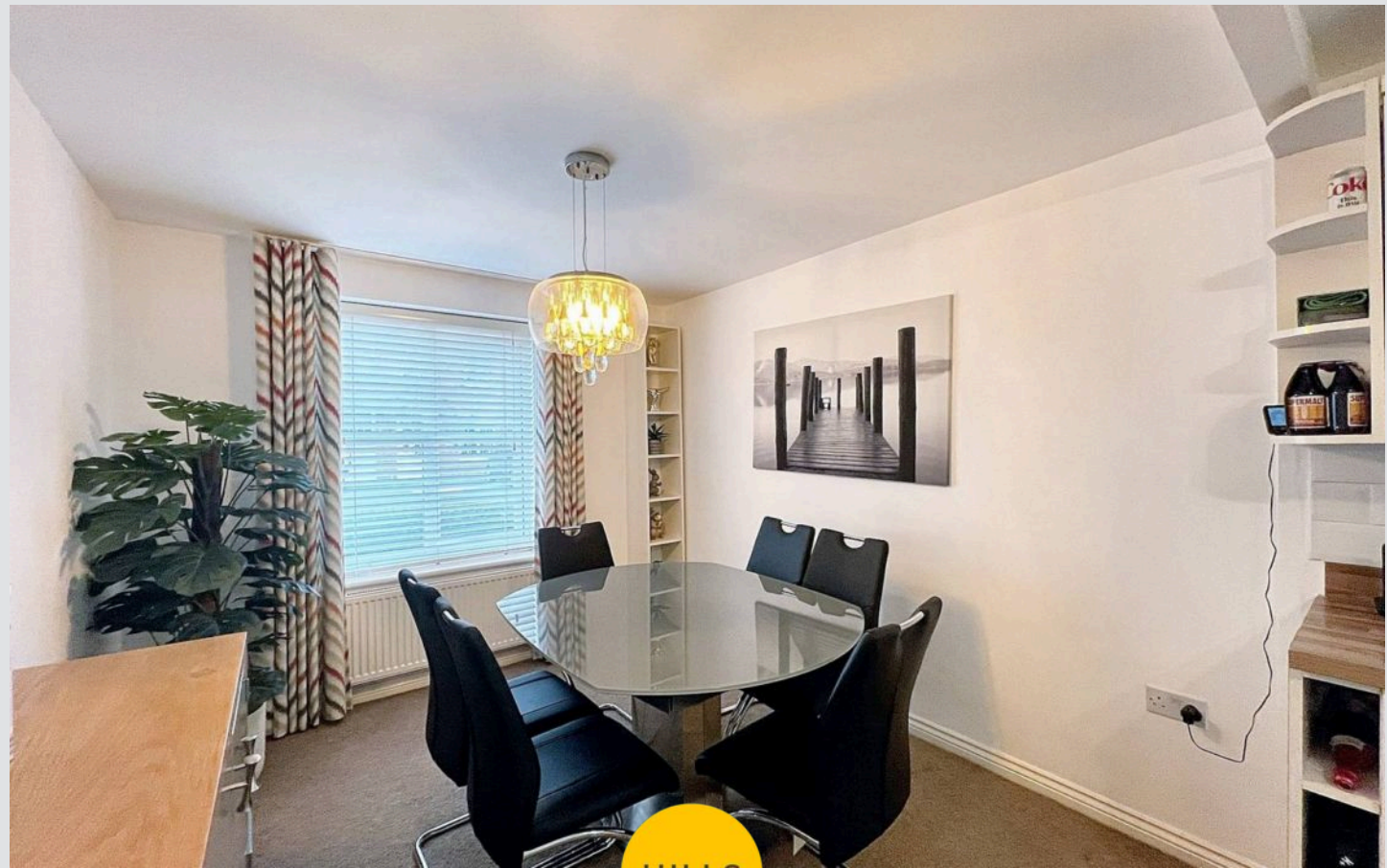
7' 11" x 9' 8" (2.41m x 2.95m)

### Bedroom Four

8' 0" x 7' 1" (2.45m x 2.17m)

### Bathroom

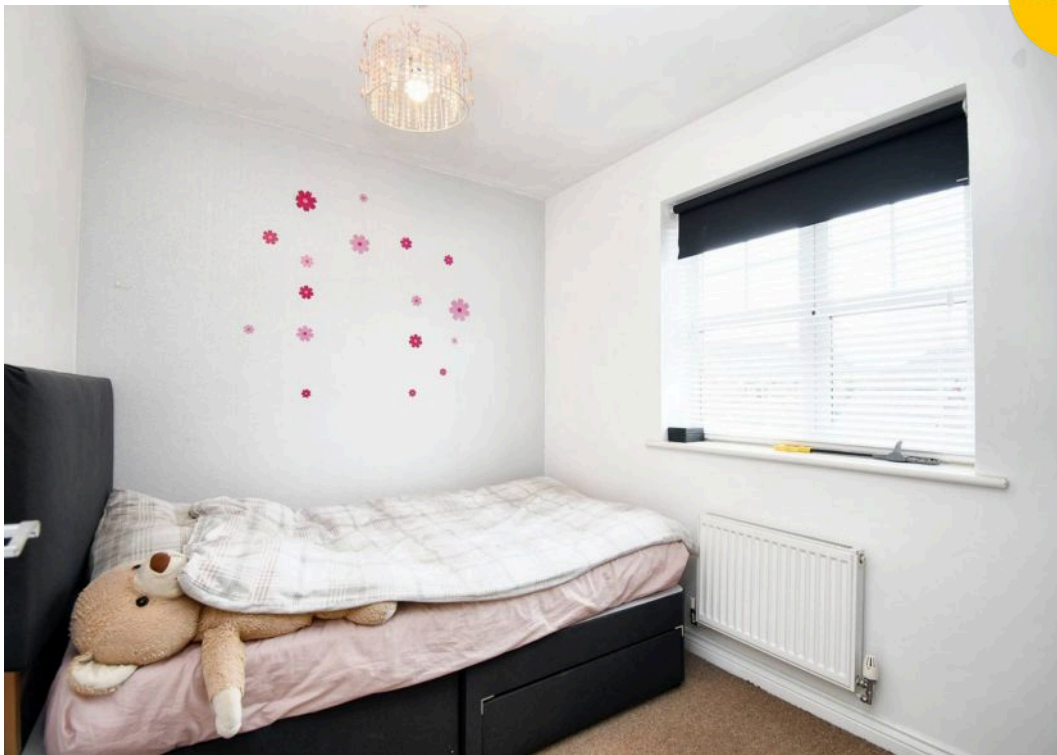
8' 8" x 6' 5" (2.63m x 1.96m)

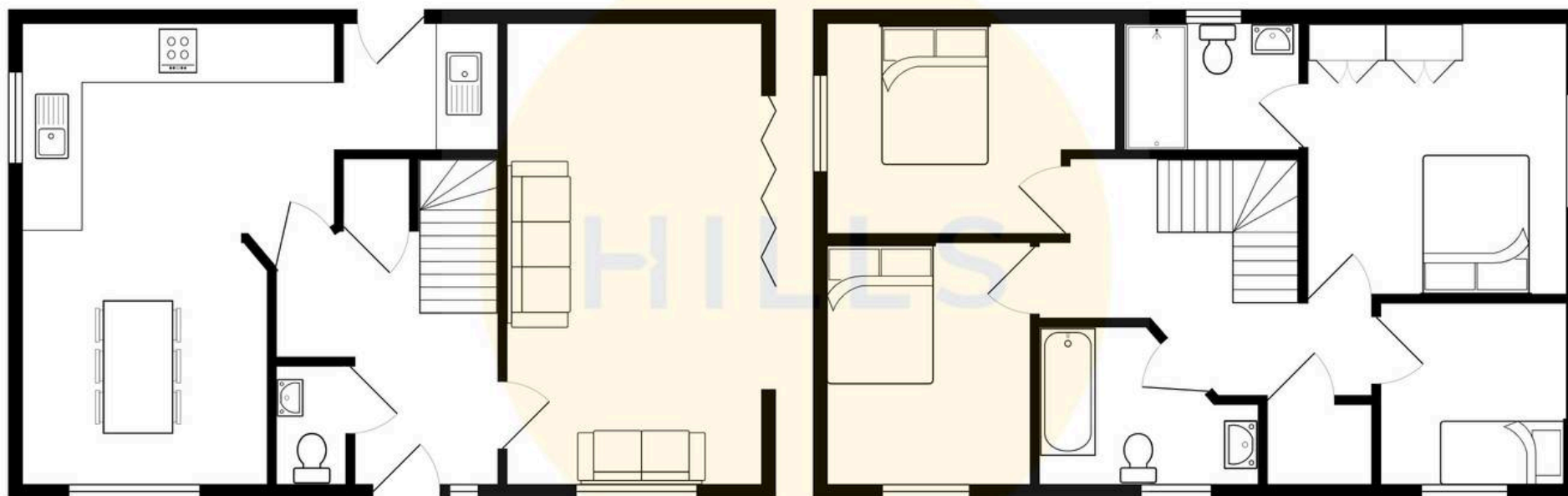






HILLS









## Hills | Salfords Estate Agent

Hills Residential, Sentinel House Albert Street – M30 0SS

0161 707 4900

[sales@hills.agency](mailto:sales@hills.agency)

[www.hills.agency/](http://www.hills.agency/)



THE PROPERTY MISDESCRIPTIONS ACT 1991 The Agent has not tested any apparatus, equipment, fixtures and fittings or services and so cannot verify that they are in working order or fit for the purpose. A Buyer is advised to obtain verification from their Solicitor or Surveyor. References to the Tenure of a Property are based on information supplied by the Seller. The Agent has not had sight of the title documents. A Buyer is advised to obtain verification from their Solicitor. You are advised to check the availability of this property before travelling any distance to view. Every effort and precaution has been made to ensure these particulars are correct and not misleading but their accuracy is not guaranteed nor do they form part of any contract. If there is any point which is of particular importance to you, please contact us and we will provide any information you require. This is advisable, particularly if you intend to travel some distance to view the property. The mention of any appliances and services within these details does not imply that they are in full and efficient working order. These particulars are in draft form awaiting Vendors confirmation of their accuracy. These details must therefore be taken as a guide only.