



Peel Green Road, Eccles

Manchester



Offers in Region of £230,000



# Peel Green Road

Eccles, Manchester

**\*\*LARGE FOUR BEDROOM PERIOD PROPERTY OVER THREE FLOORS PLUS A CELLAR! Located in the Popular Peel Green Area\*\***

Council Tax band: A

Tenure: Freehold

- Large Four Bedroom, Bay-Fronted Period Property
- Situated Over Three Floors Plus a Cellar
- Large Bay-Fronted Lounge and a Separate Dining Room
- Fitted Kitchen and a Wet Room Style Shower Room
- Four Double Bedrooms
- Low-Maintenance Courtyard Gardens to the Front and Rear
- Situated Within Easy Access of the Trafford Centre and Eccles Town Centre
- Close to Transport Links into Salford Quays, Media City and Manchester City Centre
- Ideal for Someone Looking to Put Their Own Stamp on a Property
- Early Viewing Recommended!



HILLS





**Entrance Hallway**

**Lounge**

12' 10" x 12' 0" (3.91m x 3.67m)

**Kitchen**

3' 0" x 2' 8" (0.91m x 0.81m)

**Landing**

**Wet Room**

2' 8" x 2' 2" (0.81m x 0.66m)

**Boiler Cupboard**

1' 7" x 1' 1" (0.48m x 0.33m)

**Bedroom One**

4' 9" x 3' 9" (1.45m x 1.14m)

**Bedroom Three**

3' 7" x 3' 1" (1.09m x 0.94m)

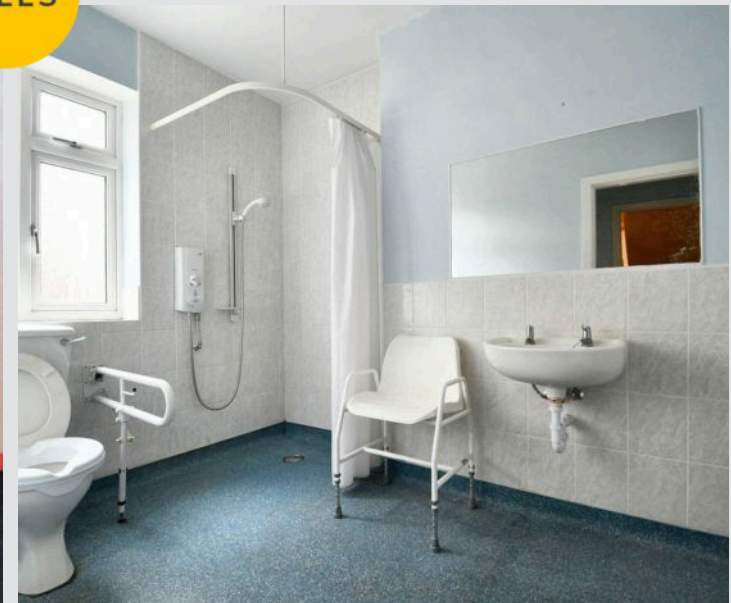
**Landing**

**Bedroom Two**

3' 9" x 3' 8" (1.14m x 1.12m)

**Bedroom Four**

3' 2" x 2' 8" (0.97m x 0.81m)

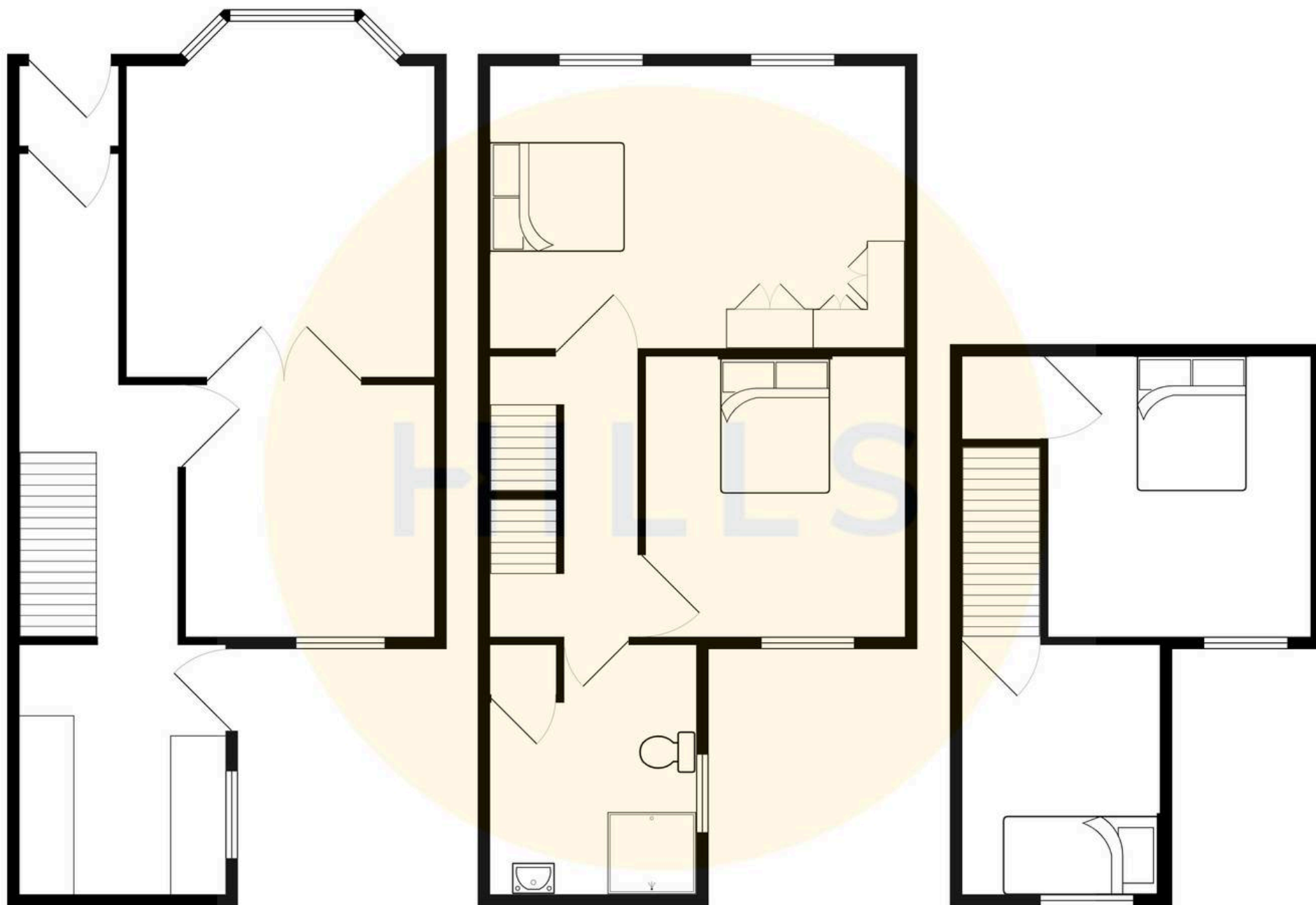






HILLS









## Hills | Salfords Estate Agent

Hills Residential, Sentinel House Albert Street - M30 0SS

0161 707 4900

[sales@hills.agency](mailto:sales@hills.agency)

[www.hills.agency/](http://www.hills.agency/)



THE PROPERTY MISDESCRIPTIONS ACT 1991 The Agent has not tested any apparatus, equipment, fixtures and fittings or services and so cannot verify that they are in working order or fit for the purpose. A Buyer is advised to obtain verification from their Solicitor or Surveyor. References to the Tenure of a Property are based on information supplied by the Seller. The Agent has not had sight of the title documents. A Buyer is advised to obtain verification from their Solicitor. You are advised to check the availability of this property before travelling any distance to view. Every effort and precaution has been made to ensure these particulars are correct and not misleading but their accuracy is not guaranteed nor do they form part of any contract. If there is any point which is of particular importance to you, please contact us and we will provide any information you require. This is advisable, particularly if you intend to travel some distance to view the property. The mention of any appliances and services within these details does not imply that they are in full and efficient working order. These particulars are in draft form awaiting Vendors confirmation of their accuracy. These details must therefore be taken as a guide only.