



Oakville Drive

Salford



£410,000



# Oakville Drive

Salford

**\*\*QUIET CUL-DE-SAC\*\*** A large, extended four bedroom semi-detached family home, situated in a within walking distance of Salford Royal Hospital and within catchment of Ellesmere Park High School!  
Council Tax band: C

Tenure: Freehold

- Four Bedroom Semi-Detached Family Home
- Boasting a Wrap Around Single Storey Extension and a Loft Conversion
- Benefits from Three Reception Rooms
- Large Open Plan Kitchen Diner with Velux Windows
- Four Well-Proportioned Bedrooms, with a W/C in the Top Floor
- Modern Four-Piece Family Bathroom
- Well-Presented Gardens to the Front and Rear
- Driveway for Off-Road Parking
- Within Walking Distance of Salford Royal Hospital and Ellesmere Park High School
- Viewing is Highly Recommended!



HILLS





## Entrance Hallway

### Office

15' 3" x 6' 6" (4.65m x 1.99m)

### Reception One

13' 9" x 12' 1" (4.19m x 3.68m)

### Kitchen/Diner

14' 11" x 14' 6" (4.56m x 4.42m)

### Reception Two

11' 6" x 9' 11" (3.51m x 3.03m)

## Landing

### Bedroom One

12' 9" x 11' 0" (3.89m x 3.35m)

### Bedroom Two

10' 1" x 9' 11" (3.08m x 3.02m)

### Bedroom Three

9' 7" x 6' 6" (2.92m x 1.98m)

### Bathroom

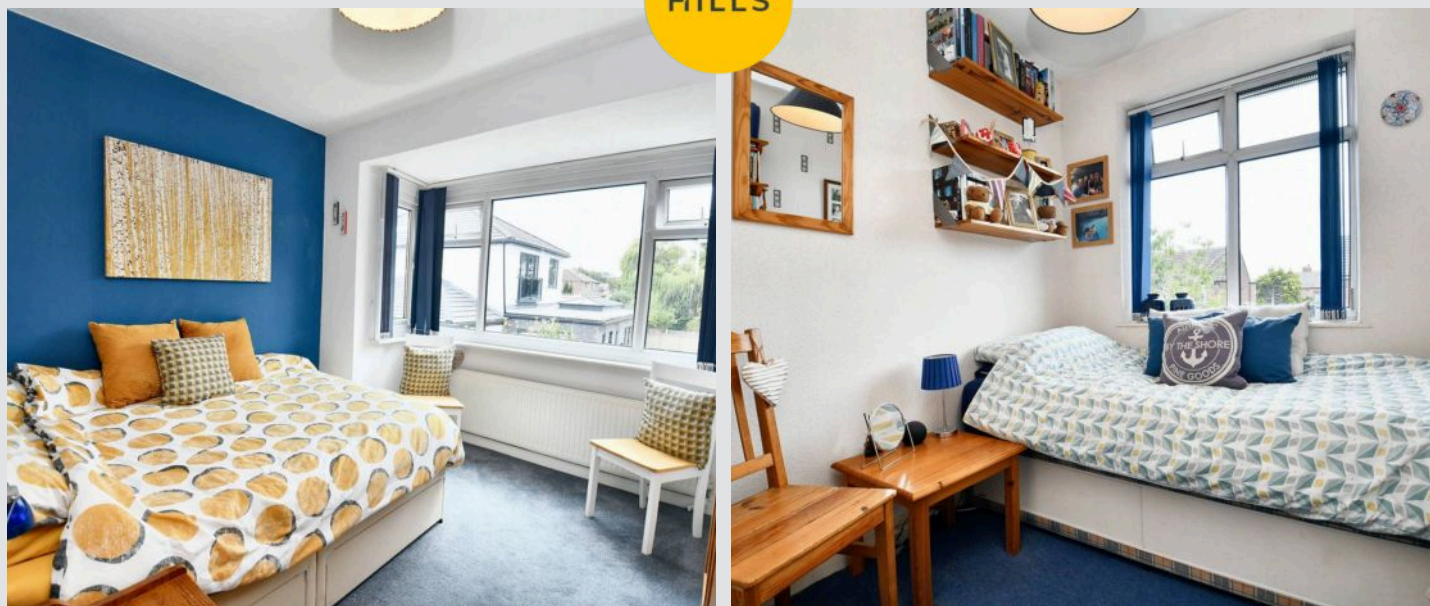
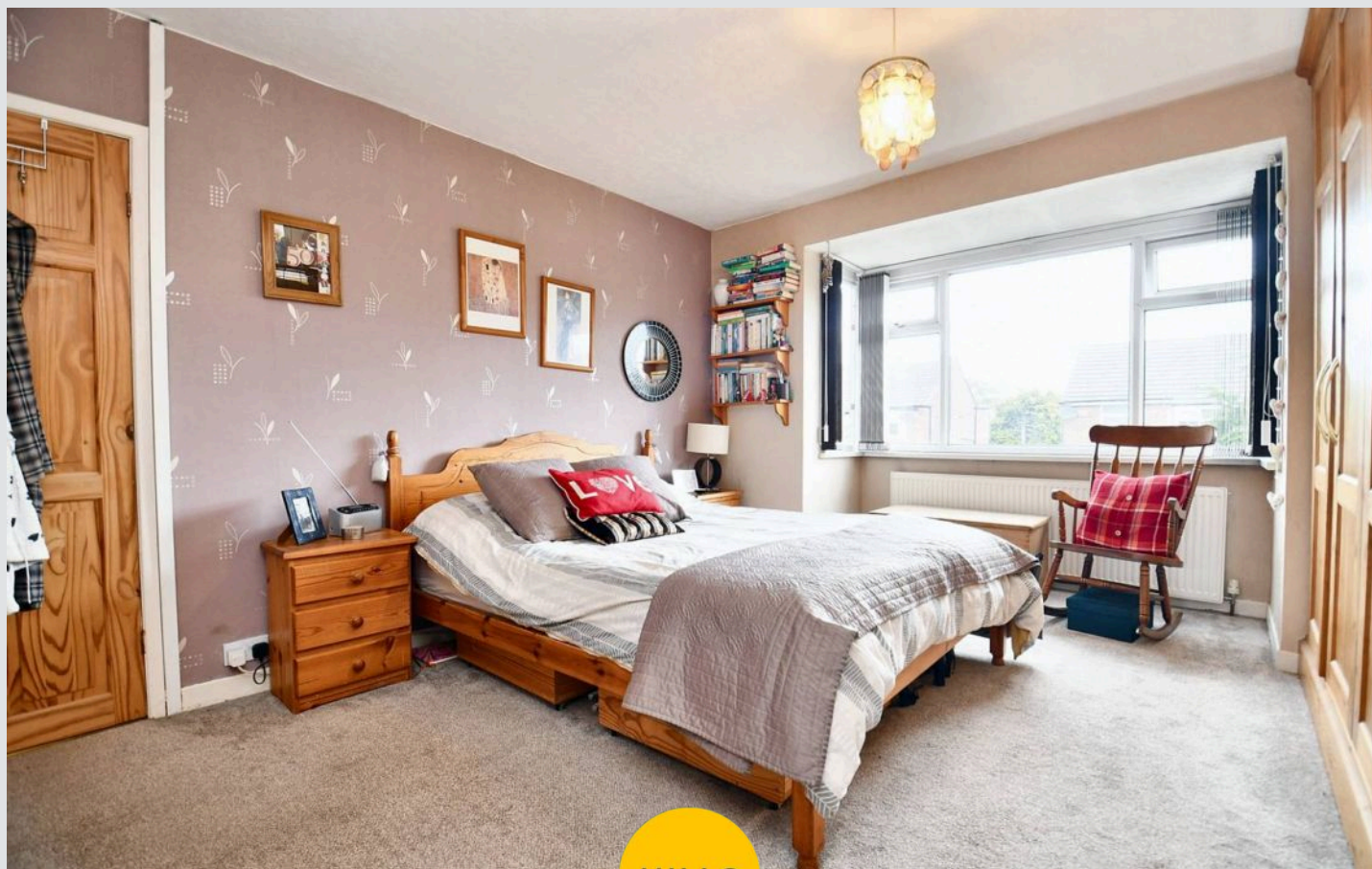
8' 6" x 6' 6" (2.58m x 1.98m)

### Bedroom Four

17' 0" x 11' 10" (5.17m x 3.60m)

### Ensuite

5' 9" x 3' 10" (1.74m x 1.18m)

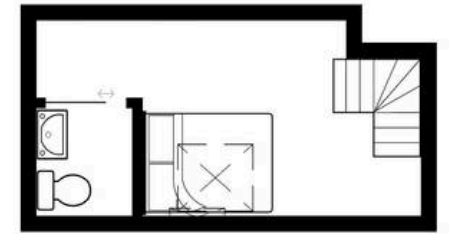
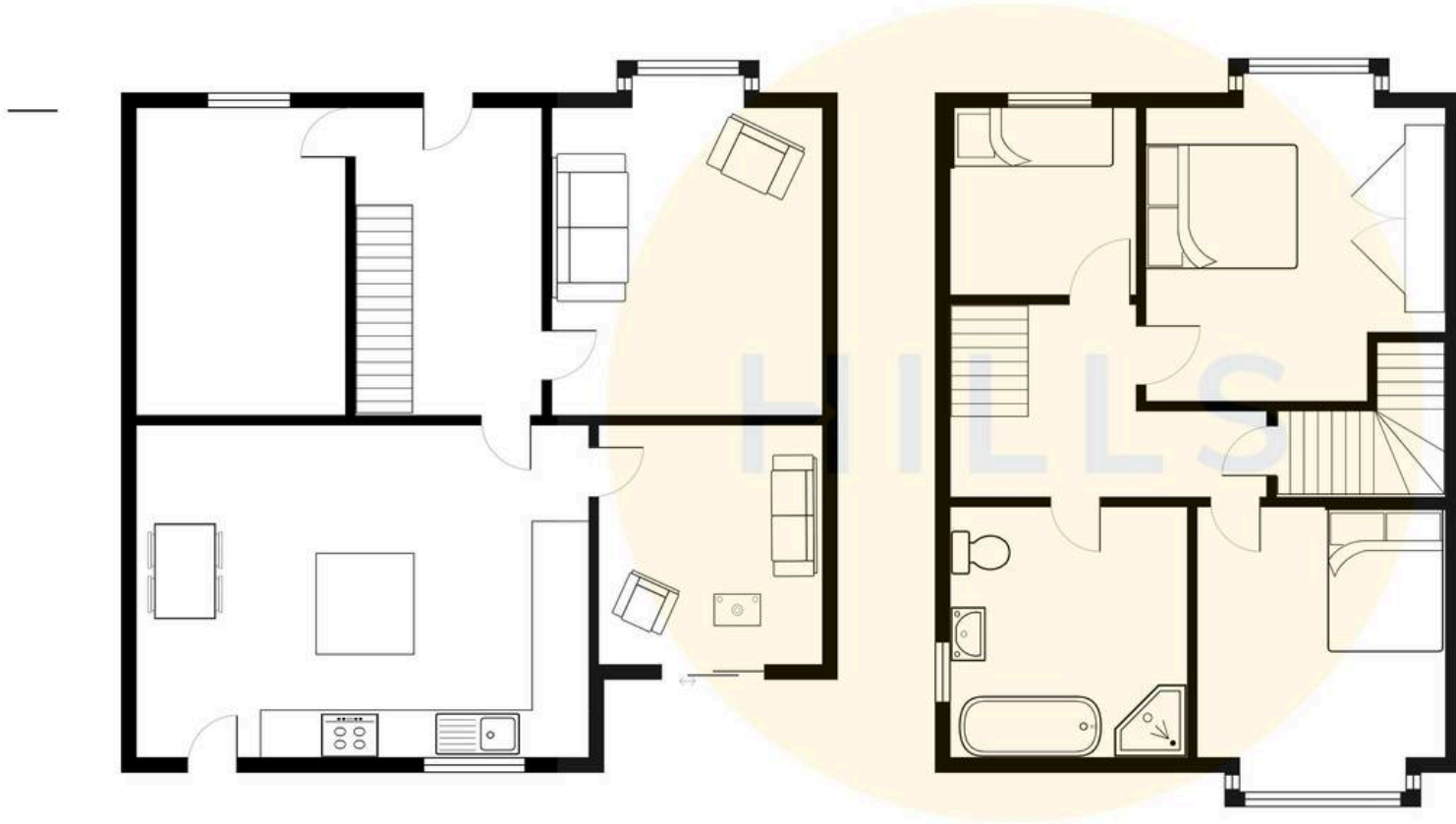






HILLS









## Hills | Salfords Estate Agent

Hills Residential, Sentinel House Albert Street – M30 0SS

0161 707 4900

[sales@hills.agency](mailto:sales@hills.agency)

[www.hills.agency/](http://www.hills.agency/)



THE PROPERTY MISDESCRIPTIONS ACT 1991 The Agent has not tested any apparatus, equipment, fixtures and fittings or services and so cannot verify that they are in working order or fit for the purpose. A Buyer is advised to obtain verification from their Solicitor or Surveyor. References to the Tenure of a Property are based on information supplied by the Seller. The Agent has not had sight of the title documents. A Buyer is advised to obtain verification from their Solicitor. You are advised to check the availability of this property before travelling any distance to view. Every effort and precaution has been made to ensure these particulars are correct and not misleading but their accuracy is not guaranteed nor do they form part of any contract. If there is any point which is of particular importance to you, please contact us and we will provide any information you require. This is advisable, particularly if you intend to travel some distance to view the property. The mention of any appliances and services within these details does not imply that they are in full and efficient working order. These particulars are in draft form awaiting Vendors confirmation of their accuracy. These details must therefore be taken as a guide only.